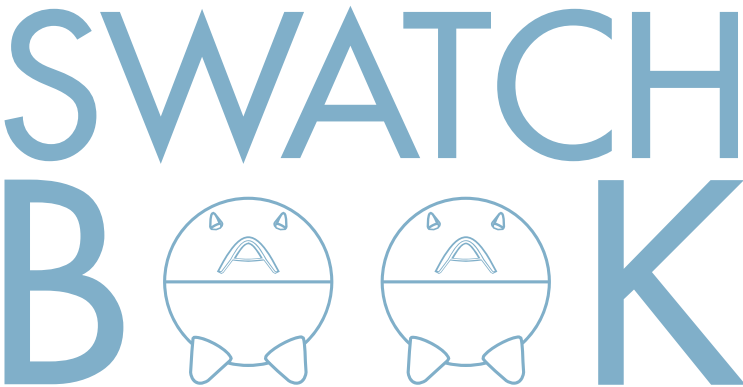


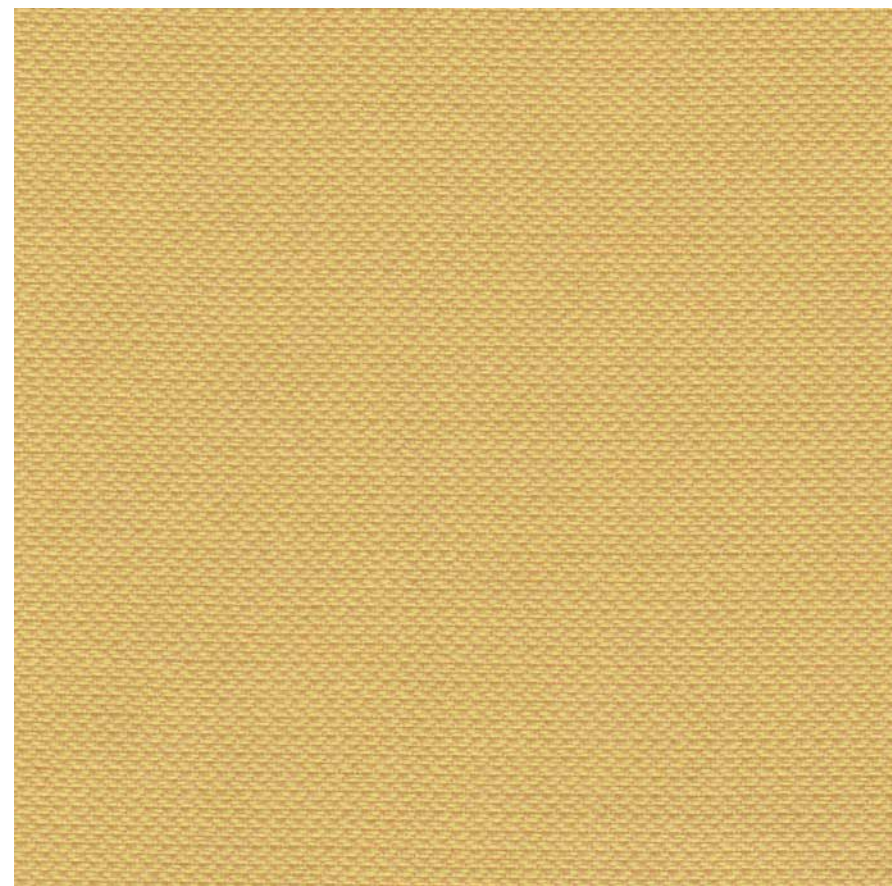
Kvadrat Revive 1

Technical Parameter	
Material	100% recycled polyester FR
Weight	App. 430/lin.m
Width	140cm
Abrasion Resistance	60,000 Martindale cycles
Light Fastness	(Note 5-7,ISO 105-B02)
]Flammability	EN 1021-1/2
	DIN 4102 B1
	Önorm B1/Q1
	UNI 9175 1IM
	US Cal. Tech. Bull. 117
IMO A.652 (16)	
No use of brominated flameretardants	
Cleaning	Vacuum regularly. Professionally dry clean or wipe clean with a damp cloth.

NOTE: Some values for this report may have a variation of +/-5% with the real product.
Slightly chromatic aberration for different bacthes, to spot shall prevail.



Kvadrat Revive 1

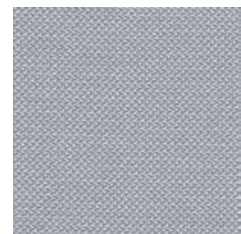


KR-04 yellow

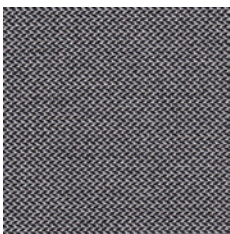
Note: Slightly chromatic aberration for different batches have a variation of +/-5% with the real product, to spot shall prevail.
We reserve the right to alter technical specifications without notice.

Kvadrat Revive 1

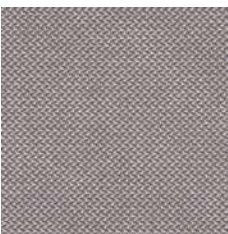
only for chairs



KR-01 light grey



KR-02 dark grey



KR-03 khaki



KR-04 yellow



KR-05 blackish green

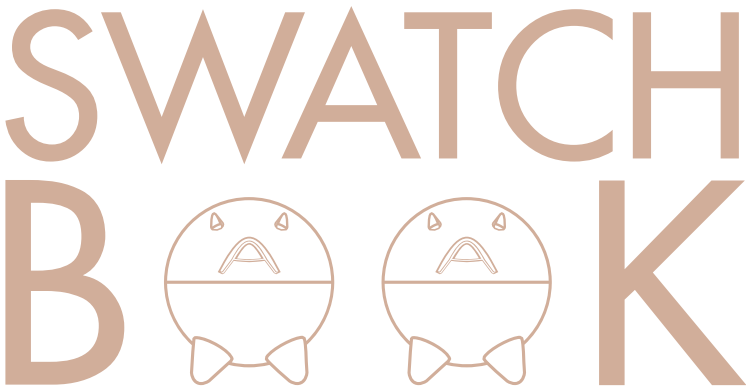


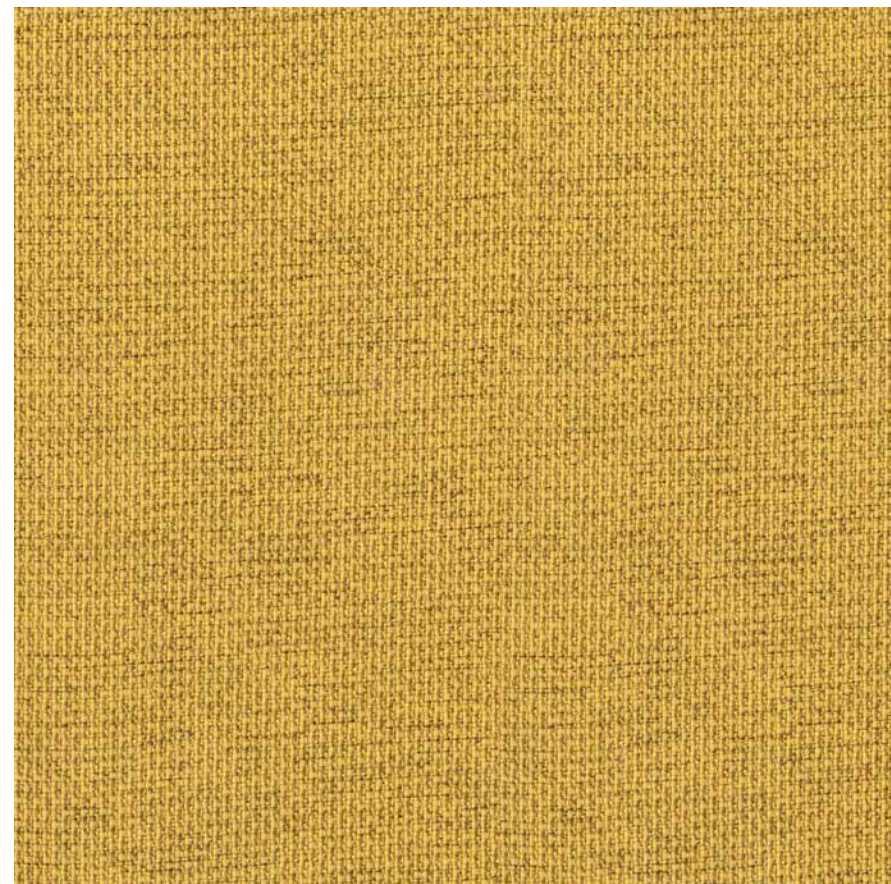
KR-06 pink

Gabriel Mozart

Technical Parameter	
Material	100%Polyester
Weight	600g/m²±5%
Width	140cm
Abrasion Resistance	80,000 rubs. ENISO 12947-2(Martindale)
Light Fastness	scale 1-8,max 8 EN IXO 105-B02 AATCC 16 Light fastness
Light Fastness	scale 1-8,max 8 EN IXO 105-B02 AATCC 16 Light fastness
Colour fastness to tubbing	scale 1-5,max 5 EN IXO 105x12 (wet/dry)
Flammability	EN ISO 1021 1&2 Flame retardant performance is dependent upon the foam used.
Cleaning	Vacuum regularly. Professionally dry clean or wipe clean with a damp cloth.

NOTE: Some values for this report may have a variation of +/-5% with the real product.
Slightly chromatic aberration for different batches, to spot shall prevail.



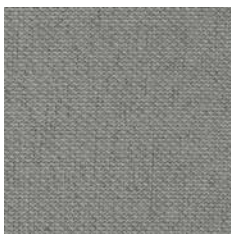


GMZ-62061 yellow

Note: Slightly chromatic aberration for different batches have a variation of +/-5% with the real product, to spot shall prevail.
We reserve the right to alter technical specifications without notice.



GMZ-60186 light grey



GMZ-60188 grey



GMZ-60189 dark grey



GMZ-67062 cyan



GMZ-68143 light green



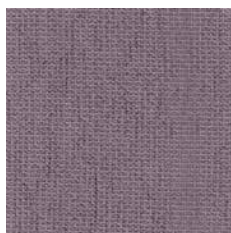
GMZ-68144 green



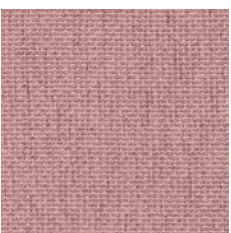
GMZ-66159 blue



GMZ-66160 dark blue



GMZ-64194 purple



GMZ-64135 pink



GMZ-63076 brick red



GMZ-64139 red

Gabriel Medley

Technical Parameter	
Material	100% Polyester
Weight	510g/lm (16.45 oz/lin.yd.)
Width	140cm
Abrasion Resistance	(EN ISO 12947-2) 75,000 Martindale
Light Fastness	scale 1-8, max. 8 - EN ISO 105-B02 5-7
Flammability	EN 1021 1&2. BS 5852 0&1. Calif. Tech. Bull. 117-E.UNI 9175 Class 1 IM Will also pass other flammability standards Note: Flame retardant performance is depent upon the foam used.
Cleaning	Vacuum regularly. Professionally dry clean or wipe clean with a damp cloth.

NOTE: Some values for this report may have a variation of +/-5% with the real product.
Slightly chromatic aberration for different bacthes, to spot shall prevail.





GM-61002 khaki



GM-61003 coffee



GM-61004 brown



GM-60167 light grey



GM-60004 dark grey



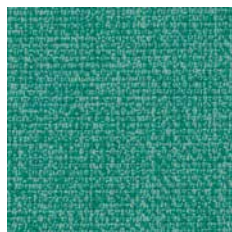
GM-68005 dark green



GM-68002 light green



GM-62002 yellow



GM-67054 cyan

New



GM-64124 pink

New



GM-65012 purple



GM-64019 red



GM-63013 orange



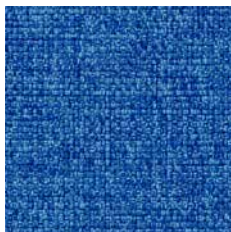
GM-63064 pink

New



GM-63017 jacinth

New



GM-66009 royal blue



GM-66007 dark blue



GM-67053 indigo blue

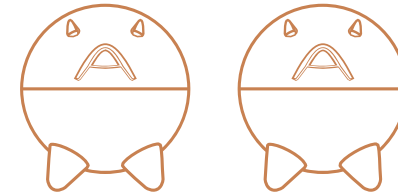
Technical Parameter

Material	100% Laneve™ wool
Weight	460g/m ² ±5%
Width	140cm
Abrasion Resistance	5 years guarantee/50,000 Martindale cycles
Light Fastness	(ISO 105-B02:1999) 5 class
Flammability	BS EN 1021-1:2006(cigarette) BS EN 1021-2:2006(match) BS 7176:2007 Low Hazard Optional-Please specify when ordering: BS 5852:2006 Section 4 Ignition Source 5 BS 7176:2007 Medium Hazard
Cleaning	Vacuum regularly. Professionally dry clean or wipe clean with a damp cloth.

NOTE: Some values for this report may have a variation of +/-5% with the real product.
Slightly chromatic aberration for different batches, to spot shall prevail.



SWATCH
BOOK



Camira Landscape Collection



CB-58 yellow

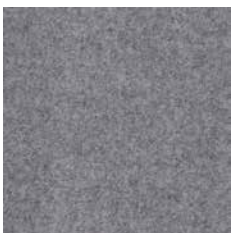


Note: Batch to batch variations in shade may occur within commercial tolerance. We reserve the right to alter technical specifications without notice.

Camira Blazer



CB-04 red



CB-06 light grey



CB-05 dark grey



CB-11 light blue



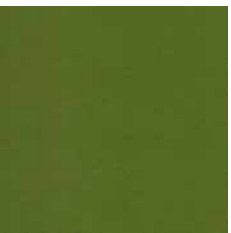
CB-08 cyan



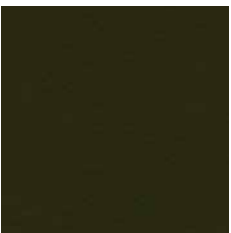
CB-10 blue



CB-07 grass green



CB-53 green



CB-01 blackish green



CB-40 khaki



CB-82 yellowish brown



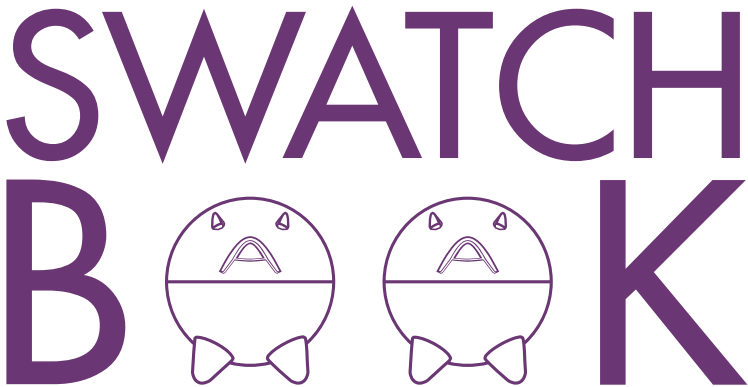
CB-39 jacinth



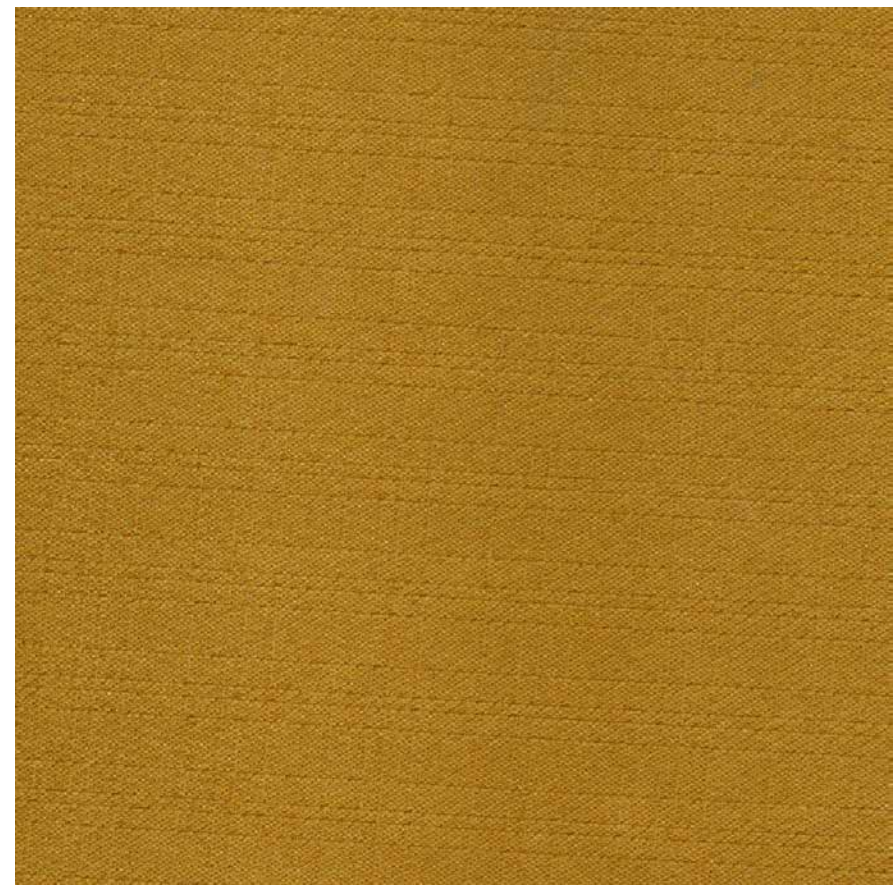
OTE Lido

Technical Parameter	
Material	100% Polyester
Weight	480g/m²±5%
Width	145cm
Abrasion Resistance	EN ISO 12947-2-1998; Martindale Wear & Abrasion Tester; 12 kPa.Pressure >40,000 cycle
Light Fastness	ISO 105 - B02:1994/Amd1:1998+Amd2:2000;use Xenon arc lamp. 4-5 class
Tensile Strength	ISO 13934-1:2014;CRE-25mm grab 1700(Warp)N;1700(Weft)N
Pilling Resistance	ISO 12945-2:2000;Martindale abrasion&Pilling tester.415g. After1000 rubs;After5000 rubs 4-5 rating

NOTE: Some values for this report may have a variation of +/-5% with the real product.
Slightly chromatic aberration for different bacthes, to spot shall prevail.



OTE Mountain



OM-11 yellow

Note: Slightly chromatic aberration for different bacthes have a variation of +/-5% with the real product, to spot shall prevail.
We reservethe right to alter technical specifications without notice.

OTE Lido



OL-04 khaki



OL-40 light grey



OL-21 dark grey



OL-03 dark khaki

New



OL-13 green



OL-14 dark green

New



OL-11 cyan



OL-54 blue



OL-17 purple



OL-07 purple red

New



OL-09 orange

New



OL-15 red

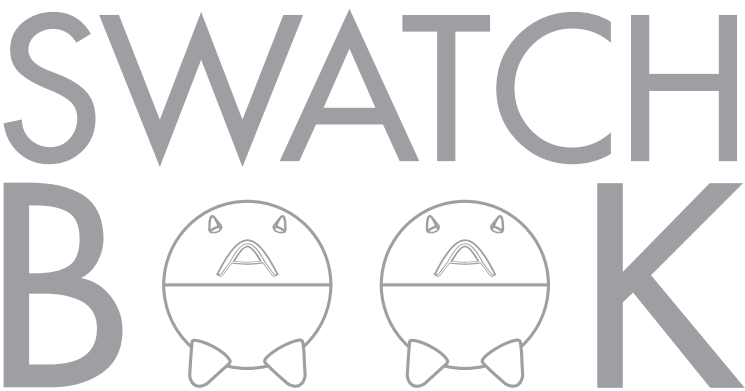
Mastrotto Authentic Leather

Technical Parameter	
Material	First layer of leather
Weight	980g/m²±5%
Width	Irregular shape
Thickness	0.9~1.1mm
Tensile Strength	Min.10N/mm²
Elongation at break	≥35%
Tear Stength	Min.40N/mm
Flexing Endurance	20000 Fex,No Damage

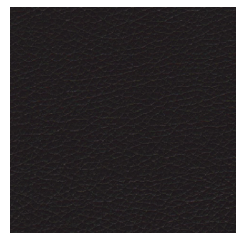
Mastrotto Linea Collection

Technical Parameter	
Material	European yellow leather body
Weight	980g/m²±5%
Width	Irregular shape
Thickness	0.9~1.1mm
Tear Stength	Min.40N/mm
Flexing Endurance	20000 Fex,No Damage

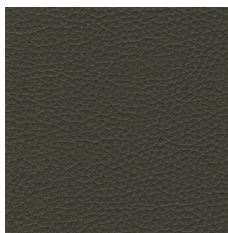
NOTE: Some values for this report may have a variation of +/-5% with the real product.
Slightly chromatic aberration for different bacthes, to spot shall prevail.



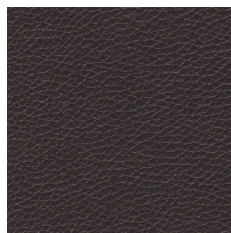
Mastrotto Authentic Leather



ML-01 black



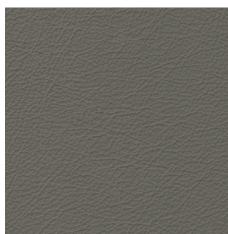
ML-02 grey



ML-03 brown



ML-04 silver brown



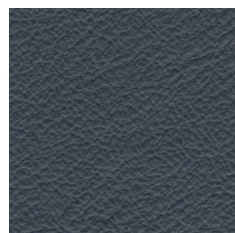
ML-05 khaki grey



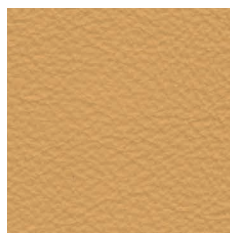
ML-06 pearl white

注释：不同批次的实际产品会存在+/- 5%的色差。我们保留修改技术规格的权利，不另行通知。
Note: Slightly chromatic aberration for different batches have a variation of +/-5% with the real product, to spot shall prevail.
We reserve the right to alter technical specifications without notice.

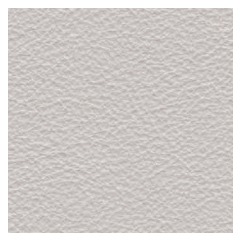
Mastrotto Linea Collection



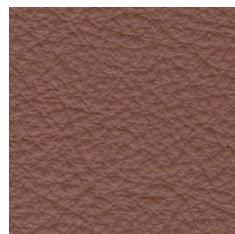
MC-24



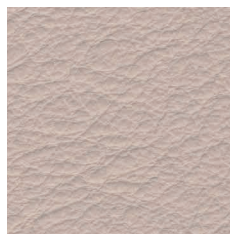
MC-20



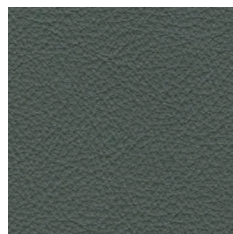
MC-49



MC-62



MC-63



MC-53

Technical Parameter

ACE SMART Microfiber Leatherette	
Material	Nylon, Polyurethane
Width	137cm±2%
Thickness	0.2cm

NOTE: Some values for this report may have a variation of +/-5% with the real product.
Slightly chromatic aberration for different batches, to spot shall prevail.





ASSQ-2153 black

Note: Slightly chromatic aberration for different batches have a variation of +/-5% with the real product, to spot shall prevail.
We reserve the right to alter technical specifications without notice.



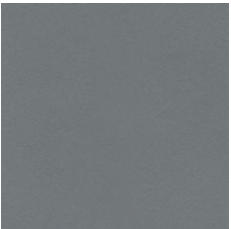
AS-2152 dark blue



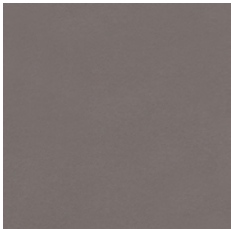
AS-2153 black



AS-2134 brown



AS-2147 grey blue



AS-2151 grey brown



AS-2104 light khaki



AS-2118 pink



AS-2121 pink green



AS-2125 olive

Hafeele-LE9140B

Technical Parameter	
Material	100%Polyester
Weight	365±12g/㎡
Width	145cm±5cm
Abrasion Resistance	>100000

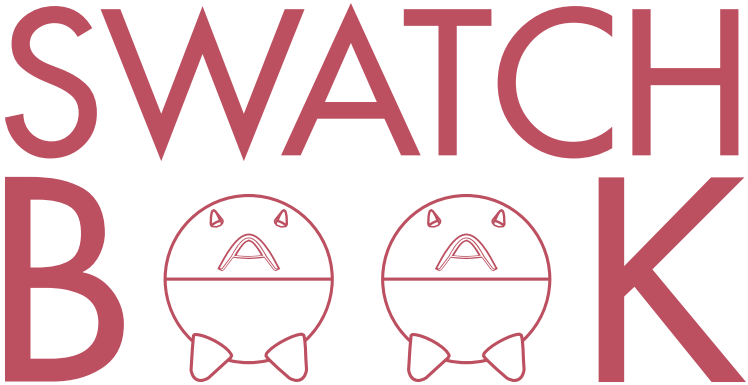
Hafeele-LE8100

Technical Parameter	
Material	Content 90% polyester 10% Acrylic
Weight	530±12g/㎡
Width	140cm±5cm

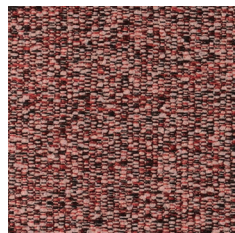
Hafeele-LE8200

Technical Parameter	
Material	Content 85% polyester 15% viscose
Weight	535±20g/㎡
Width	140cm

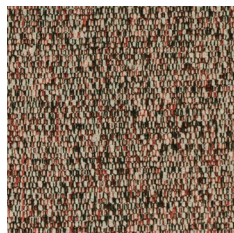
NOTE: Some values for this report may have a variation of +/-5% with the real product.
Slightly chromatic aberration for different batches, to spot shall prevail.



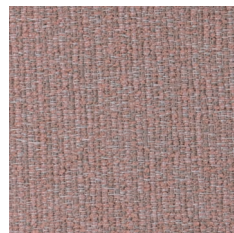
Hafeele-LE9140B



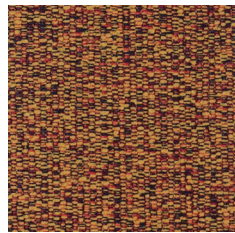
HL-37



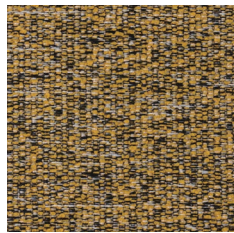
HL-35



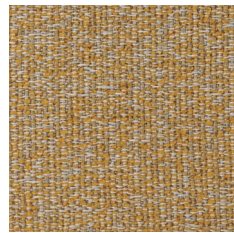
HL-33



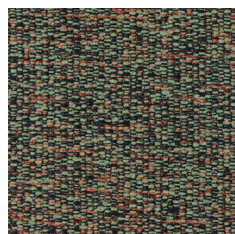
HL-07



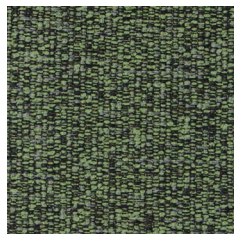
HL-11



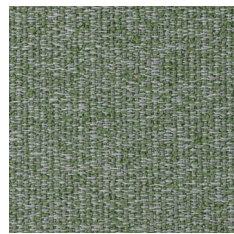
HL-02



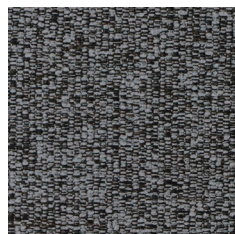
HL-13



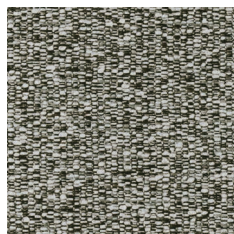
HL-14



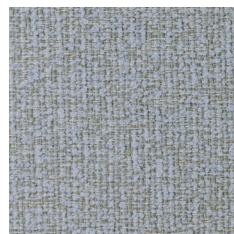
HL-16



HL-40



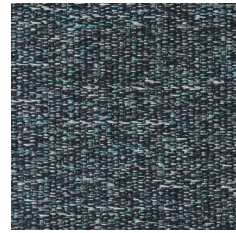
HL-39



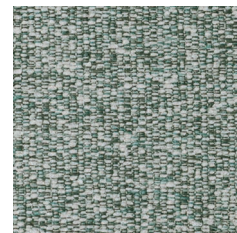
HL-26

Note: Slightly chromatic aberration for different batches have a variation of +/-5% with the real product, to spot shall prevail.
We reserve the right to alter technical specifications without notice.

Hafeele-LE9140B

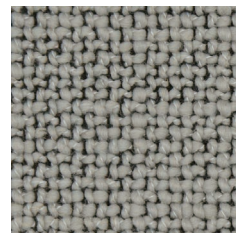


HL-30

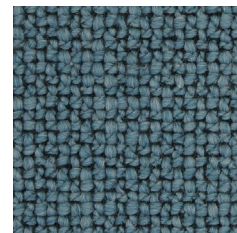


HL-28

Hafeele-LE8100



HL-8103

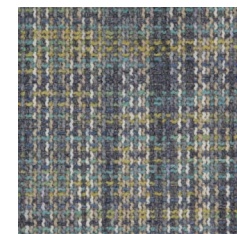


HL-8107

Hafeele-LE8200



HL-8204



HL-8202