

# COLOR SWATCH BOOK

**grado**®

Steam

A

Composition

Origin

Abrasion

Lightfastness

Rubbing

Pilling

100% Polyester

China

>40000

4

4-5

4-5

Description

A fabric with the texture, color, and grain of leather, but is extremely soft and warm to the touch. This tightly woven fabric is pet-friendly.

Water-proof protective coating is available to Type 101, 272.



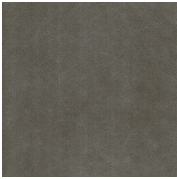
LP-Steam-101  
Liquid Proof  
Limestone



Steam-105  
Middle Gray



LP Steam-272  
Liquid Proof  
Caramel



Steam-454  
Graphite

Solo

A

Composition

Origin

Abrasion

Lightfastness

Rubbing

Pilling

100% Polyester

China

>40000

5

4-5

4-5

Description

This chenille fabric with a clear rib is soft and heavy weight to the touch. This fabric for contemporary style living space is available across several colors, offering a rich heirloom look.



Solo-102  
Ivory



Solo-170  
Champagne



Solo-355  
Dark Green



Solo-500  
Sienna

Talent

A

Composition

Origin

Abrasion

Lightfastness

Rubbing

Pilling

91% Polyester,  
9% Acrylic

China

>40000

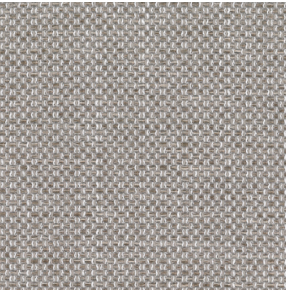
4

4-5

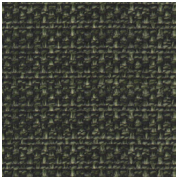
4

Description

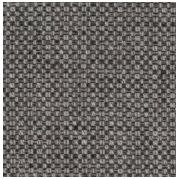
Loose weave fabric intermeshing yarns of various colors. This heavy weight fabric is a little rough to the touch.



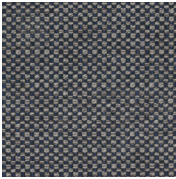
Talent-04  
Light Gray



Talent-12  
Dark Green



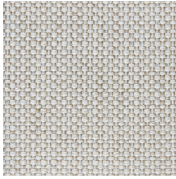
Talent-26  
Dark Gray



Talent-37  
Graphite



Talent-01  
Pure White



Talent-02  
Fog

Silex

A

Composition

Origin

Abrasion

Lightfastness

Rubbing

Pilling

100% Polyester

China

>40000

6

4-5

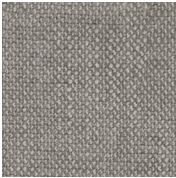
4

Description

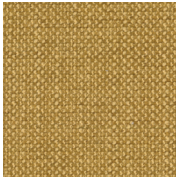
With a intermeshing of bunchy yarn, this contemporary style fabric has a clear rib. The chenille yarn adds a heavy weight and warm touch to its surface. Offers test reports from REACH chemicals from European Commission and other internationally authoritative test organization. The B-level liquid-proof, oil-proof, dust-proof coating is available to Silex 79



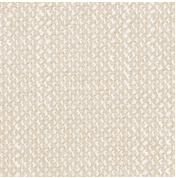
Silex-02  
Linen



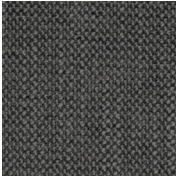
Silex-23  
Graphite



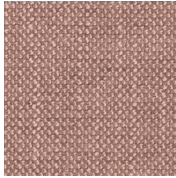
Silex-46  
Mustard Yellow



Silex-79  
Off White



Silex-84  
Charcoal



Silex-88  
Dusty Pink

Decent

A

Composition 100% Polyester  
Origin China  
Abrasion >40000  
Lightfastness 5-6  
Rubbing 4-5  
Pilling 4-5

Description  
It has a fine and soft velvet with nap. Very soft and warm to the touch. The knit and nap offer a soft luster.



Decent-02  
Beige



Decent-09  
Silver Gray



Decent-15  
Mustard yellow



Decent-26  
Amber



Decent-29  
Dark Green

City

A

Composition 100% Polyester  
Origin China  
Abrasion >20000  
Lightfastness 6  
Rubbing 4-5  
Pilling 4-5

Description  
The City fabric with unique wrinkle texture has a heavy weight and soft feeling to the touch, elevating the modern living space.



City-120  
Beige



City-462  
Dark Gray

Twill

A

Composition 100% Polyester  
Origin China  
Abrasion >70000  
Lightfastness 4  
Rubbing 4-5  
Pilling 4

Description  
The two-color cotton and linen like texture fabric is straight and smooth, simple and generous. Washable fabric with selected TC backing.



Twill-100  
Creamy White



Twill-151  
Silver Gray



Vienna (Special Finishes)

B

Composition 100% Polyester  
Origin China  
Abrasion >40000  
Lightfastness 6  
Rubbing 4  
Pilling 4

Description  
This chamois fabric is fine and soft with a smooth pattern. This tightly woven fabric is pet-friendly.



LODP-Vienna-103  
Off White



LODP-Vienna-151  
Silver Gray



LODP-Vienna-170  
Latte



LODP-Vienna-310  
Thyme

A1986

B

Composition 84.5% Polyester,  
10.5% Acrylic,  
5% Flax  
Origin China  
Abrasion >2000  
Lightfastness 3  
Rubbing 3-4  
Pilling 4

Description  
The flax fibers intermeshed in this fabric make it skin-friendly and breathable.



A1986-2A  
Khaki

A1923

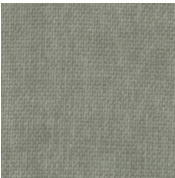
B

Composition 100% Polyester  
Origin China  
Abrasion >25000  
Lightfastness 4  
Rubbing 4-5  
Pilling 3

Description  
Soft fabric with nap on its surface.



A1923-14A  
Dusty Pink



A1923-18A  
Celadon



A1923-19A  
Charcoal

A2267

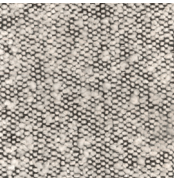
B

Composition 81% Polyester,  
19% Acrylic  
Origin China  
Abrasion >50000  
Rubbing 3-4  
Pilling 4

Description  
This fabric with soft and bumpy texture comparable to real fleece is heavy weight, adding a little rough to the touch. The C-level liquid-proof, oil-proof, dust-proof coating is available to this fabric.



A2267-2A  
Cream White



A2267-3A  
Panda



Wales

B

**Composition** 100% Polyester,  
**Origin** China  
**Abrasion** >20000  
**Lightfastness** 6  
**Rubbing** 4-5  
**Pilling** 4-5

**Description**  
This fabric resembles real fleece with a clear rib.



Wales-102  
Off-White



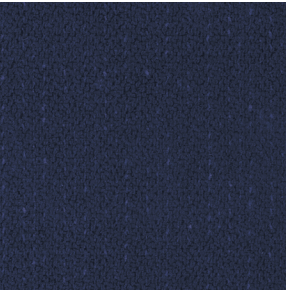
Wales-170  
Middle Gray

NA

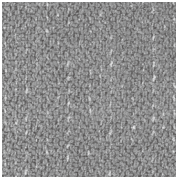
B

**Composition** 79% Polyester,  
13%Acrylic,  
8% Viscosa  
**Origin** China  
**Abrasion** >20000  
**Lightfastness** 4  
**Rubbing** 4-4.5  
**Pilling** 3-4

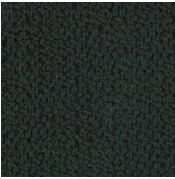
**Description**  
A heavy weight fabric with an intermeshing of yarns.



NA-14  
Royal Blue



NA-18  
Graphite



NA-62  
Dark Green

RC14

B

**Composition** Organosilicon Leather  
**Origin** China  
**Abrasion** >100000  
**Lightfastness** 5  
**Rubbing** 4.5  
**Pilling** 4

**Description**  
Organosilicon leather with a smooth grain.  
Zero formaldehyde. It is durable, pet-friendly,  
easy-to-clean, and hydrolysis resistant.



RC14-06  
Off White



RC14-25  
Latte

Future (Quilted)

B

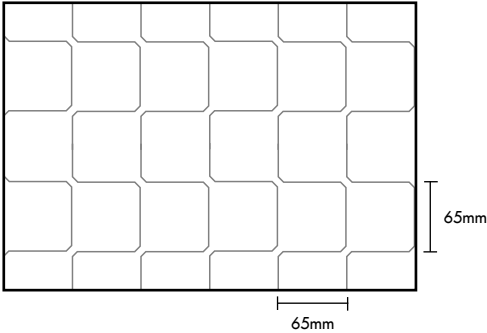
**Composition** 100% Polyester  
**Origin** China  
**Abrasion** >40000  
**Lightfastness** 5-6  
**Rubbing** 4-5  
**Pilling** 4-5

**Description**  
Soft fabric with nap on its surface. grado  
makes it into a special quilted upholstery  
fabric.

Spacing:6.5mm\*6.5mm



QT-Future-51  
Cream White



Birkin

C

Composition Organosilicon Leather  
Origin China  
Abrasion >100000  
Lightfastness 4-5  
Rubbing 4-5  
Pilling 4-5

Description  
Full-silicone fabric with a clear leathery grain and texture to the touch. It is durable, fire resistant, anti-bacteria, and environment-friendly.



Birkin-6004  
Beige



Birkin-6010  
Caramel



Birkin-6038  
Deep Black



Birkin-6001  
Off White



Birkin-6032  
Silver Gray

YG

L0

Composition Leather  
Origin China

Description  
Smooth full-grain leather of good quality and breathability, made from cow hides imported from the US.



YG-1607  
Deep Black



YG-1608  
Chocolate



YG-73612  
Middle Gray

A2267 (Special Finishes)

C

Composition 81% Polyester,  
19% Acrylic  
Origin China  
Abrasion >50000  
Rubbing 3-4  
Pilling 4

Description  
This fabric with soft and bumpy texture comparable to real fleece is heavy weight, adding a little rough to the touch.



LODP-A2267-2A  
Cream White

LY

L1

Composition Leather  
Origin China

Description  
Milled full grain leather is smooth to touch, made from cow hides imported from the US.



LY-71075  
Beige

\*Special Finishes: water-proof, oil-proof, dust-proof



**grado**

**ADDRESS**

No.1181 Bin'an Road  
Binjiang District  
Hangzhou City  
Zhejiang Province, China

**CONTACT US**

+86 400 080 8822  
[www.gradodesign.com](http://www.gradodesign.com)  
[info@gradodesign.com](mailto:info@gradodesign.com)

REACH  
SVHC

SGS

GREENGUARD  
Indoor Air Quality Certified

intertek  
Total Quality. Assured.



**FOLLOW US**



[gradodesign\\_official](#)



[grado\\_official](#)



[grado](#)

[www.gradodesign.com](http://www.gradodesign.com)