

upholstered·material·finishes

GROUP 01
BASIC



exit
fabrics.

Tech data sheet

Composition

100% Polyester

Width 140 cm ± 2%

Weight 335 g/m² ± 5%

Resistance to abrasion

EN ISO 12947-2 - 100.000 Martindale cycles

Breaking strength

UNE-EN ISO 13937-3

Warp: 140 N / Weft: 110 N

Fastness to Rubbing

UNE-EN ISO 105-X12

Dry: 4 / Wet: 4

(grade 1-5; 5 best value).

Colour fastness to light

UNE-EN ISO 105-B02. Method 2: 4-5

(grade 1-8; 8 best value).

Pilling resistance

UNE-EN ISO 12945-2: 4-5

(grade 1-5; 5 best value).

Acoustic absorption

EN ISO 10534-2

Acoustic absorption peak: 0,9

Inflammability

UE: EN 1021-1/2

UK: BS 5852 0 / BS 7176 Low Hazard

USA: CAL TB 117 Section 1 / NFPA 260 Class 1

E, part 1 (CS. 191-53; CLASS 1) NFPA 260:2009

IMO MSC.307(88) Annex I Part 8



Cigarette
test



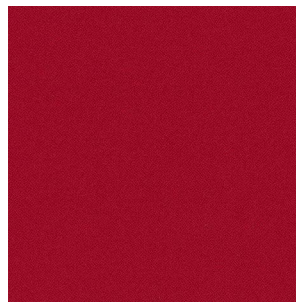
Match test



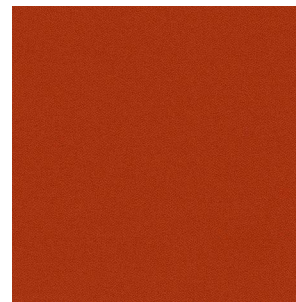
Don't use
bleach



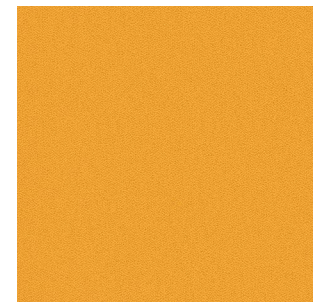
Wash in dry



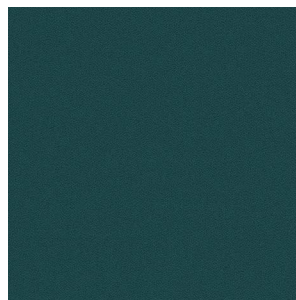
C7 (BS 4011)



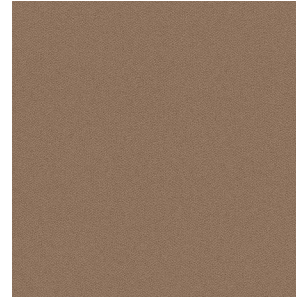
C4 (BS A087)



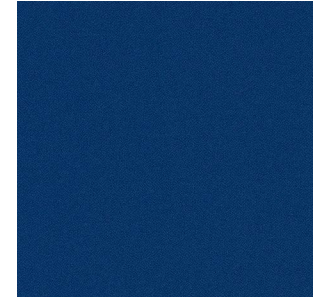
C21 (BS A088)



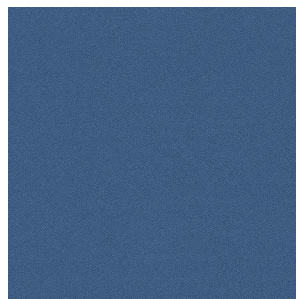
C22 (BS A045)



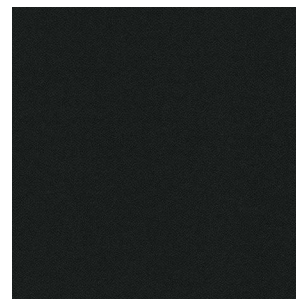
C19 (BS G132)



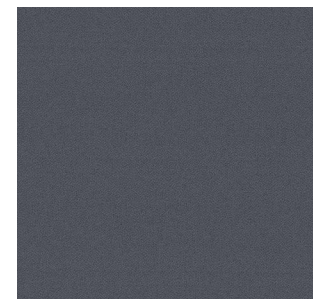
C10 (BS 6015)



C23 (BS A404)



C5 (BS A009)



C2 (BS A019)

GROUP 01 URUGUAY



VERY IMPORTANT!



Light colors and white are excluded from warranty due to color transmission from external fabrics (jeans, dyed clothes, etc.).



Tech data sheet

Composition

Surface 100% Polyurethane
Base 80% Polyester - 20% cotton

Width 140 cm ± 3%

Weight 600 g/lm ± 5%

Resistance to abrasion

EN ISO 12947-2 - >100.000 Martindale cycles

Tensile strength

EN ISO 1421
Warp: 774 N / Weft: 618 N

Tear growth resistance

EN ISO 4674-1
Warp: 123,6 N / Weft: 91 N

Seam strength

EN ISO 13936-2
Warp: 3 mm / Weft: 3 mm

Fastness to Rubbing

UNE-EN ISO 105-X12
Dry: 5 / Wet 5
(grade 1-5; 5 best value).

Colour fastness to light

UNE-EN ISO 105-B02. Method 2: 5
(grade 1-8; 8 best value).

Permanent creasing behavior

DIN EN ISO 32100/DIN 53359 - 30.000 cycles

Inflammability

UE: EN 1021-1
UK: BS 5852 part 1
USA: CAL TB 117:2013
NFPA 260 Class 1



Cigarette
test



Don't use
bleach



Wash in dry



UR7 (BORDEAUX)



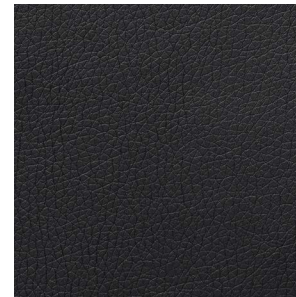
UR2 (CREAM)



UR3 (CAMEL)



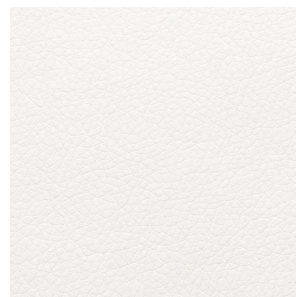
UR4 (BLUE)



UR5 (BLACK)



UR6 (ASH)



UR1 (WHITE)



UR8 (TAUPE)

GROUP 01 HERITAGE



Tech data sheet

Composition

100% Polyester

Width 140 cm ± 3%

Weight 378 g/lm ± 5%

Resistance to abrasion

EN ISO 12947-2 - 90.000 Martindale cycles

Tensile strength

EN ISO 13934-1

Warp: 1456 N / Weft: 1551 N

Tear growth resistance

EN ISO 13937-3

Warp: 190,9 N / Weft: 183,6 N

Seam strength

EN ISO 13936-2

Warp: 3 mm / Weft: 3,8 mm

Pilling resistance

UNE-EN ISO 12945-2: 4

Fastness to Rubbing

UNE-EN ISO 105-X12

Dry: 5 / Wet 4-5

(grade 1-5; 5 best value).

Colour fastness to light

UNE-EN ISO 105-B02. Method 2: 4

(grade 1-8; 8 best value).

Test de enganche

BS 8479:2008 (2.000 cycles) 5

Inflammability

UE: EN 1021-1

UK: BS 5852 part 1

USA: CAL TB 117:2013

NFPA 260 Class 1



Cigarette
test



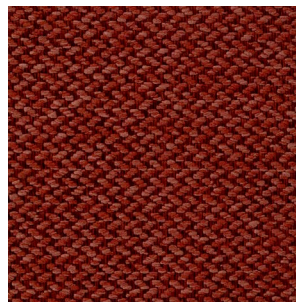
Don't use
bleach



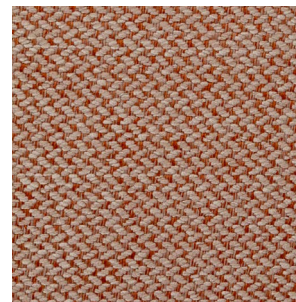
Wash in dry



Anti-stain
finish



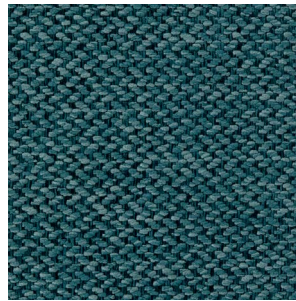
HE12 (TERRACOTA)



HE10 (ORANGE)



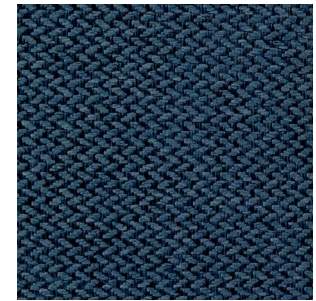
HE9 (YELLOW)



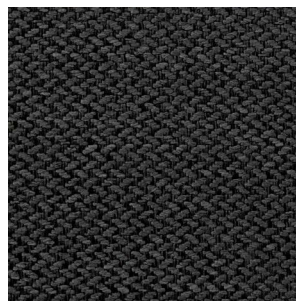
HE16 (EMERALD)



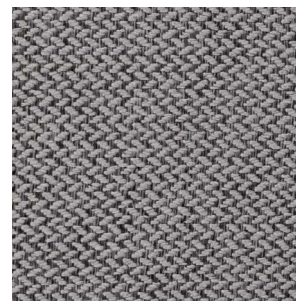
HE4 (TRUFFLE)



HE14 (OCEAN)



HE23 (BLACK)



HE19 (CEMENT)

GROUP 02
VISUAL



exit
fabrics.

Tech data sheet

Composition

100% Polyester

Width 140 cm ± 2%

Weight 330 g/m² ± 5%

Resistance to abrasion

EN ISO 12947-2 - 120.000 Martindale cycles

Breaking strength

UNE-EN ISO 13937-3

Warp: 190 N / Weft: 190 N

Fastness to Rubbing

UNE-EN ISO 105-X12

Dry: 4-5 / Wet 4-5

(grade 1-5; 5 best value).

Coulour fastness to light

UNE-EN ISO 105-B02. Method 2: 4-5

(grade 1-8; 8 best value).

Pilling resistance

UNE-EN ISO 12945-2: 4-5

(grade 1-5; 5 best value).

Acoustic absorption

EN ISO 10534-2

Acoustic absorption peak: 0,9

Inflammability

UE: EN 1021-1/2

UK: BS 5852 0 / BS 7176 Low Hazard

USA: CAL TB 117 Section 1 / NFPA 260 Class 1

Regulation n° 118 UNECE Annex 6

IMO MSC.307(88) Annex I Part 8



Cigarette
test



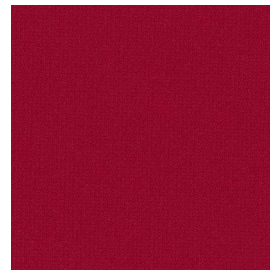
Match test



Don't use
bleach



Wash in dry



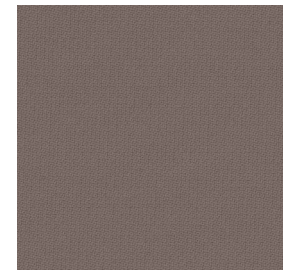
VS12 (VIS 012)



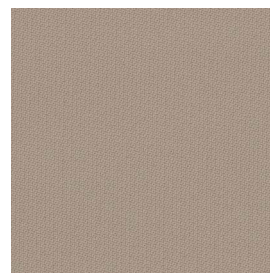
VS8 (VIS 008)



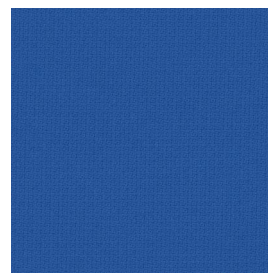
VS26 (VIS 026)



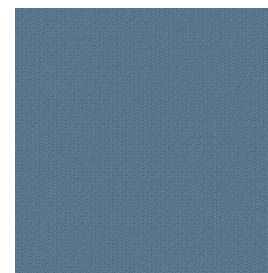
VS3 (VIS 003)



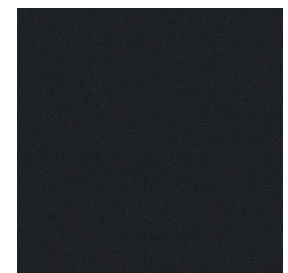
VS2 (VIS 002)



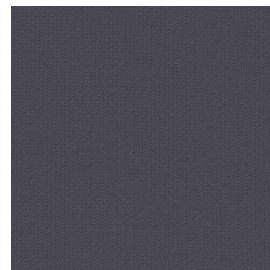
VS23 (VIS 023)



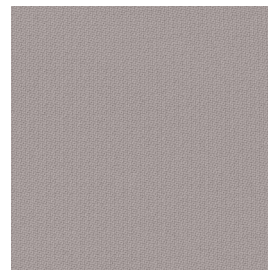
VS21 (VIS 021)



VS6 (VIS 006)



VS5 (VIS 005)



VS1 (VIS 001)

GROUP 02 CRYSTAL



exit
fabrics.

Tech data sheet

Composition

75% Recycled polyester | 25% Polyester

Width 140 cm ± 2%

Weight 290 g/m² ± 5%

Resistance to abrasion

EN ISO 12947-2 >100.000 Martindale cycles

Breaking strength

UNE-EN ISO 13937-3

Warp: 181 N / Weft: 165 N

Fastness to Rubbing

UNE-EN ISO 105-X12

Dry: 4-5 / Wet 4-5

(grade 1-5; 5 best value).

Colour fastness to light

UNE-EN ISO 105-B02. Method 2: 4-5

(grade 1-8; 8 best value).

Pilling resistance

UNE-EN ISO 12945-2: 4-5

(grade 1-5; 5 best value).

Acoustic absorption

EN ISO 10534-2

Acoustic absorption peak: 0,9

Inflammability

UE: EN 1021-1/2

UK: BS 5852 0 / BS 7176 Low Hazard

USA: CAL TB 117 Section 1 / NFPA 260 Class 1

Regulation n° 118 UNECE Annex 6

IMO MSC.307(88) Annex I Part 8



Cigarette
test



Match test



Don't use
bleach



Wash in dry



CR1 (CR A462)



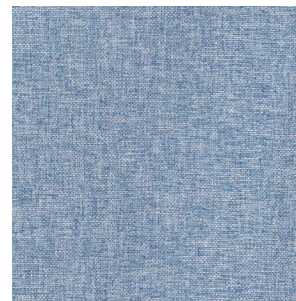
CR2 (CR A088)



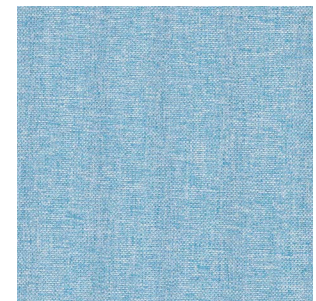
CR3 (CR A077)



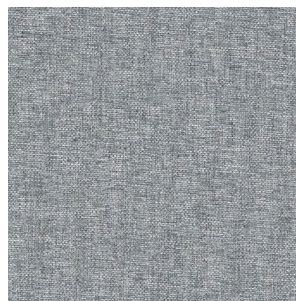
CR4 (CR A302)



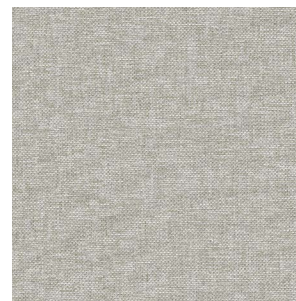
CR5 (CR A089)



CR6 (CR A157)



CR7 (CR A009)



CR8 (CR A422)



CR9 (CR A315)

GROUP 02
RELIFE



exit
fabrics.

Tech data sheet

Composition

100 % Recycled polyester

Width 140 cm ± 2%

Weight 330 g/m² ± 5%

Resistance to abrasion

EN ISO 12947-2 >100.000 Martindale cycles

Breaking strength

UNE-EN ISO 13937-3

Warp: 210 N / Weft: 171 N

Fastness to Rubbing

UNE-EN ISO 105-X12 4/5

Dry: 4-5 / Wet 4-5

(grade 1-5; 5 best value).

Coulour fastness to light

UNE-EN ISO 105-B02. Method 2: 4-5

(grade 1-8; 8 best value).

Pilling resistance

UNE-EN ISO 12945-2: 4-5

(grade 1-5; 5 best value).

Acoustic absorption

EN ISO 10534-2

Acoustic absorption peak: 0,9

Inflammability

UE: EN 1021-1/2

UK: BS 5852 0 / BS 7176 Low Hazard

USA: CAL TB 117 Section 1 / NFPA 260 Class 1

IMO MSC.307(88) Annex I Part 8



Cigarette
test



Match test



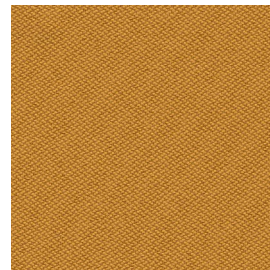
Don't use
bleach



Wash in dry



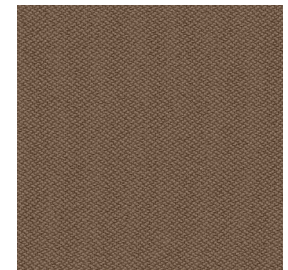
RF11 (RF011)



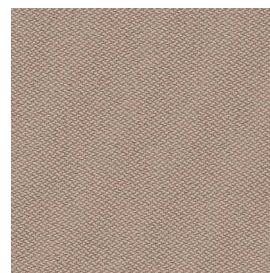
RF4 (RF004)



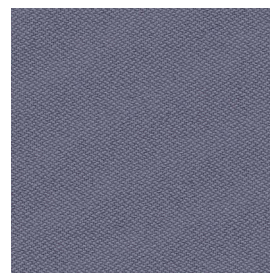
RF18 (RF018)



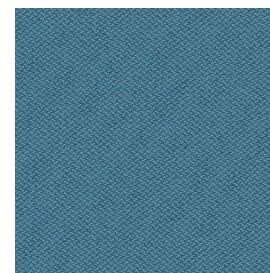
RF5 (RF005)



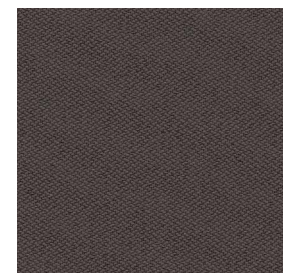
RF3 (RF003)



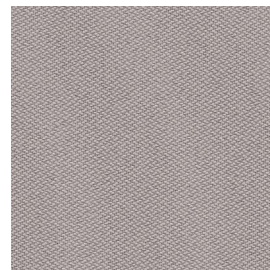
RF13 (RF013)



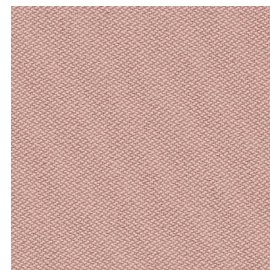
RF14 (RF014)



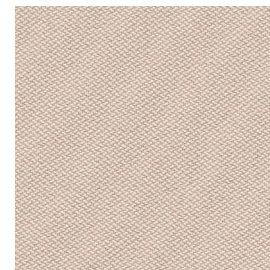
RF9 (RF009)



RF2 (RF002)



RF8 (RF008)



RF1 (RF001)

GROUP 02
ONE



FIDIVI*

Tech data sheet

Composition

100% Recycled polyester

Width 150 cm/ 59 in

Resistance to abrasion

+ 100.000 (Martindale cycles) ISO 12947-2

Coulour fastness to light

>6 / ISO 105-B02 (Xenotest)

Fastness to Rubbing

Dry: UNE-EN ISO / 105-X122003 4/5

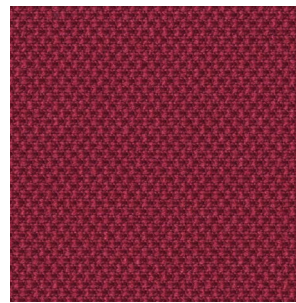
Wet: UNE-EN ISO 105-X122003 4/5

Pilling resistance

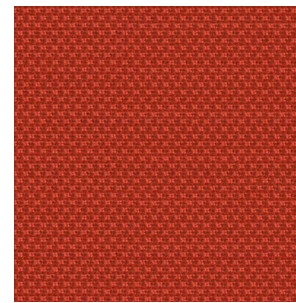
ISO 12945-2; Grade 1-5; 5

Inflammability

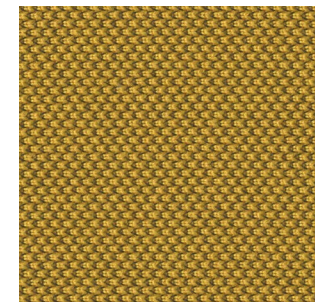
UE: EN 1021-1:2006 (cigarette) EN 1021-2:2006 (match)



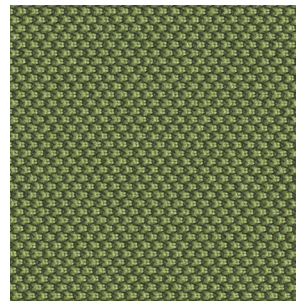
ON6 (4021)



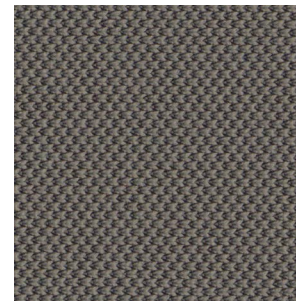
ON10 (4066)



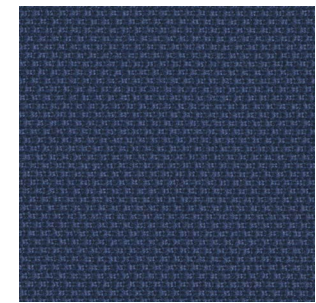
ON5 (3530)



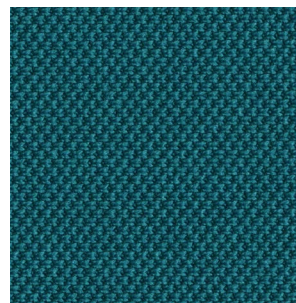
ON4 (7521)



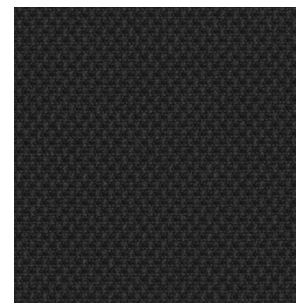
ON1 (2519)



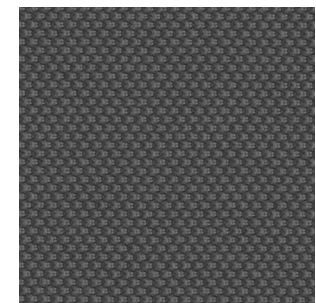
ON8 (6017)



ON7 (6555)



ON2 (8033)



ON3 (8017)

GROUP 02 BABEL



Tech data sheet

Composition

100% Polyester

Width 142 cm ± 3%

Weight 440 g/lm ± 5%

Resistance to abrasion

EN ISO 12947-2 - 90.000 Martindale cycles

Tensile strength

EN ISO 13934-1

Warp: 1311 N / Weft: 755 N

Tear growth resistance

EN ISO 13937-3

Warp: 162,4 N / Weft: 129,8 N

Seam strength

EN ISO 13936-2

Warp: 3,5 mm / Weft: 4 mm

Pilling resistance

UNE-EN ISO 12945-2: 3-4

Fastness to Rubbing

UNE-EN ISO 105-X12

Dry: 5 / Wet 4-5

(grade 1-5; 5 best value).

Colour fastness to light

UNE-EN ISO 105-B02. Method 2: 4

(grade 1-8; 8 best value).

Test de enganche

BS 8479:2008 (2.000 cycles) 5

Inflammability

UE: EN 1021-1

UK: BS 5852 part 1

USA: CAL TB 117:2013

NFPA 260 Class 1



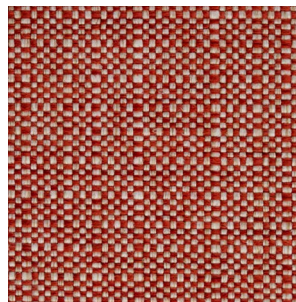
Cigarette
test



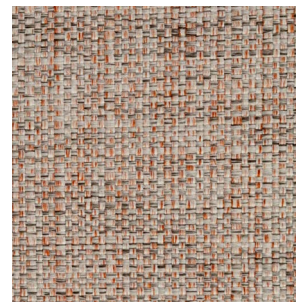
Don't use
bleach



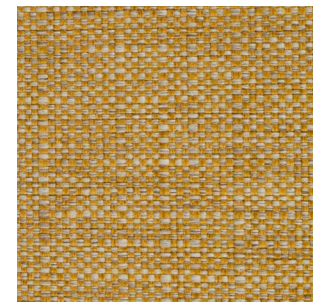
Wash in dry



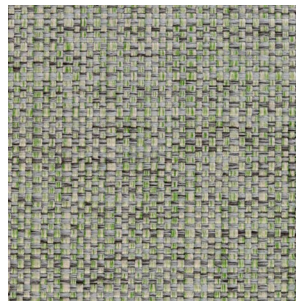
BB1 (RED)



BB2 (SALMON)



BB3 (YELLOW)



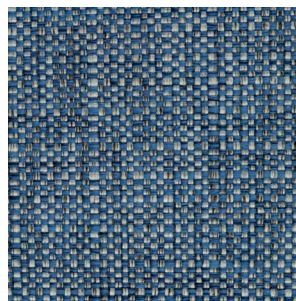
BB7 (WATER GREEN)



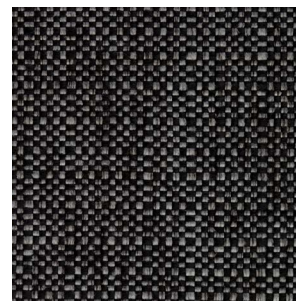
BB9 (BEIGE)



BB8 (TAUPE)



BB4 (BLUE)



BB5 (BLACK)



BB6 (ASH)

GROUP 03 TONAL



Gabriel®

Tech data sheet

Composition

100% Recycled polyester

Width 140 cm/ 55 in

Weight 315 g/lm

Resistance to abrasion

+ 100.000 (Martindale cycles)

ISO 12947-2/14465

Resistance to abrasion wyzenbeek

(ASTM D4157-07)(severe use)

+100.000 (Martindale cycles)

Pilling resistance

UNE-EN ISO 12945-2:2001 4/5

Coulour fastness to light

UNE-EN ISO 105-B02.

Grade 1-8; 6-8

Fastness to Rubbing Dry

Dry: UNE-EN ISO / 105-X122003 4/5

Wet: UNE-EN ISO 105-X122003 4/5

Acoustic test air flow resistance

EN 29053 & ISO 9053-1

Color fastness to perspiration

AATCC 15. Grade 1-5; 5 ; BS EN ISO 105-E04

Breaking strength

ASTM D4034 ; BS EN ISO 13936-2

Dry cleaning fastness

BS EN ISO 6330 4M 40 C PC

Inflammability

UE: EN 1021-1:2006 (cigarette) EN 1021-2:2006

(match) ; UK: BS 5852:2006 (cigarette and match)

BS 5852:2006 Crib 5; BS 7176:2007 Medium

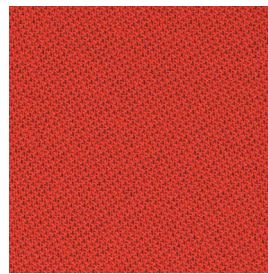
Hazard; DIN 4102-1:1998 classification B1; NF P92-

503:2004; classification M.3; Class Uno UNI 8456

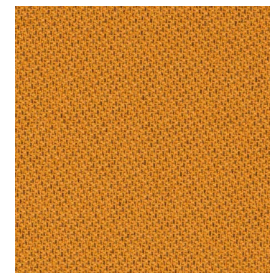
UNI 9174; CA TB 117-2013



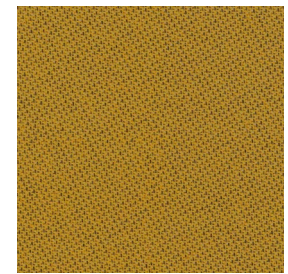
T011 (64209)



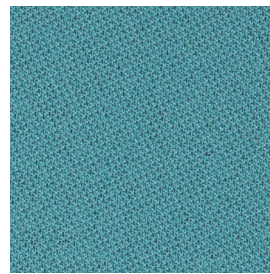
T07 (64207)



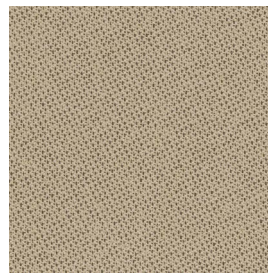
T08 (63098)



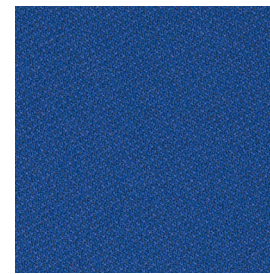
T09 (62057)



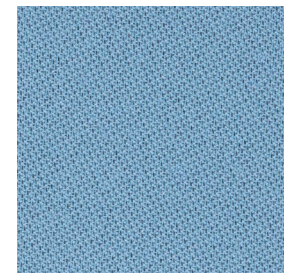
T03 (67090)



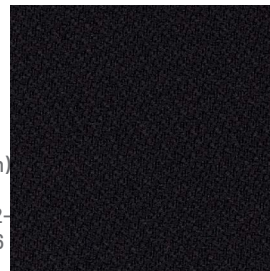
T010 (61180)



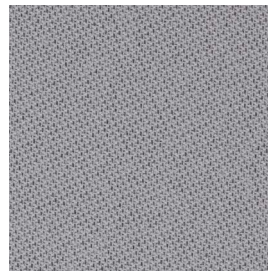
T04 (66182)



T05 (66185)



T01 (60999)



T02 (60123)



Cigarette
test



Match test



Wash in dry



Avoid drying
in the sun



Don't use
bleach

GROUP 03
JUST



Gabriel

Tech data sheet

Composition

100% Recycled polyester

Width 140 cm/ 55 in

Weight 315 g/lm

Resistance to abrasion

70.000 (Martindale cycles)

ISO 12947-2/14465

Resistance to abrasion wyzenbeek

(ASTM D4157-07) (severe use)

100.000 (Martindale cycles)

Pilling resistance

UNE-EN ISO 12945-2:2001 4/5

Couleur fastness to light

UNE-EN ISO 105-B02.

Grade 1-8; 6-8

Fastness to Rubbing Dry

Dry: UNE-EN ISO / 105-X122003 4/5

Wet: UNE-EN ISO 105-X122003 4/5

Acoustic test air flow resistance

EN 29053 & ISO 9053-1

Color fastness to perspiration

AATCC 15. Grade 1-5; 5 ; BS EN ISO 105-E04

Breaking strength

ASTM D4034; BS EN ISO 13936-2

Dry cleaning fastness

BS EN ISO 6330 4M 40 C PC

Inflammability

UE: EN 1021-1:2006 (cigarette) EN 1021-2:2006

(match) ; UK: BS 5852:2006 (cigarette and match)

BS 5852:2006 Crib 5; BS 7176:2007 Medium

Hazard; DIN 4102-1:1998 classification B1;

NF P92-503:2004; classification M.3;

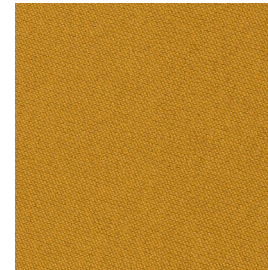
Class Uno UNI 8456 UNI 9174; CA TB 117-2013



JU1 (64205)



JU2 (63096)



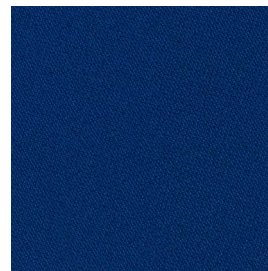
JU3 (62087)



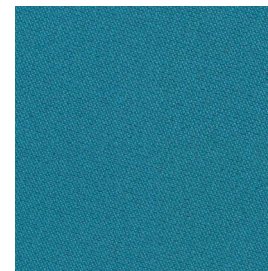
JU4 (68201)



JU5 (61176)



JU6 (66177)



JU7 (66178)



JU8 (60999)



JU9 (60119)



JU10 (60118)



Cigarette
test



Match test



Wash in dry



Avoid drying
in the sun



Don't use
bleach

GROUP 03
FELICITY



Gabriel

Tech data sheet

Composition

100% Recycled polyester

Width 140 cm/ 55 in

Weight 430 g/lm

Resistance to abrasion

90.000 (Martindale cycles) ISO 12947-2/14465

Resistance to abrasion wyzenbeek
(ASTM D4157-07)(severe use) 100.000
(Martindale cycles)

Pilling resistance

UNE-EN ISO 12945-2:2001 5/5

Fastness to Rubbing Dry

Dry: UNE-EN ISO / 105-X122003 4/5

Wet: UNE-EN ISO 105-X122003 4/5

Acoustic test air flow resistance

EN 29053 & ISO 9053-1

Coulour fastness to light

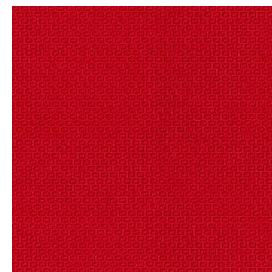
UNE-EN ISO 105-B02 method 2

Breaking strength

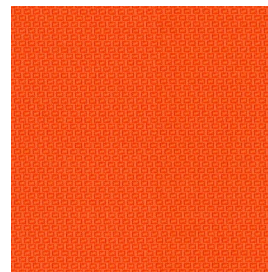
ASTM D4034

Inflammability

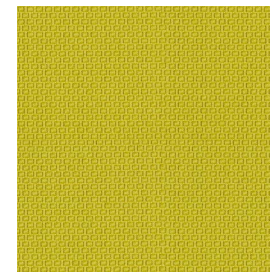
UE: EN 1021-1:2006 (cigarette) EN 1021-2:2006
(match); UK: BS 5852:2006 (cigarette and
match); BS 5852:2006 Crib 5; BS 7176:2007
Medium Hazard; DIN 4102-1:1998 classification
B1; NF P92-503:2004 classification M.3; Class
Uno UNI 8456 UNI 9174; CA TB 117-2013



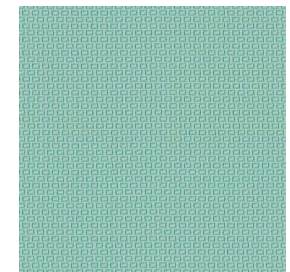
FE2 (64190)



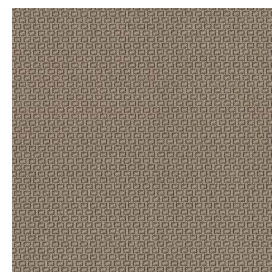
FE7 (63087)



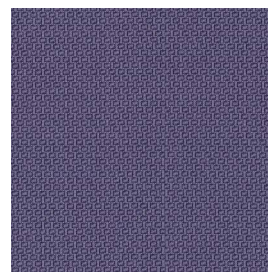
FE11 (62080)



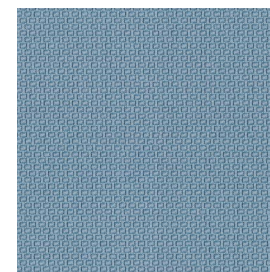
FE12 (67080)



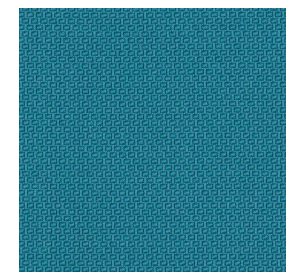
FE13 (61164)



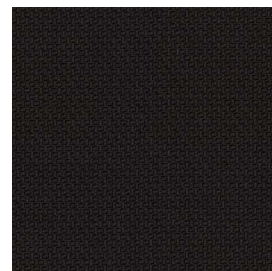
FE3 (65102)



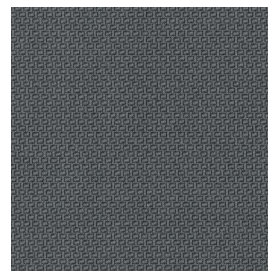
FE6 (66161)



FE10 (67079)



FE14 (60999)



FE15 (60107)



Cigarette
test



Match test



Wash in dry



Avoid drying
in the sun



Don't use
bleach

GROUP 03
VALENCIA



VERY IMPORTANT!



Light colors and white are excluded from warranty due to color transmission from external fabrics (jeans, dyed clothes, etc.).

SPRADLING®

Tech data sheet

Composition

100% Polyester

Width 137 cm - ISO 2286-1

Resistance to abrasion

+ 300.000 (Martindale cycles) ISO 12947-2

Breaking strength

ISO 4674-1 MB NEWTON (MIN.)

Warp: 29 N / Weft: 25 N

Fastness to Rubbing

Dry: UNE-EN ISO / 105-X12:2003 4/5

Wet: UNE-EN ISO 105-X12:2003 5

Colour fastness to light

DIN 54004 / NTC 1479

Cal≥7 1,000 Hours

Tensile strength

ISO 1421 M1 NEWTON / MIN

Warp: 405 N / Weft: 198

Inflammability

FMVSS 302, IMO Res. MSC.307(88) - (2010 FTP

Code) Annex 1 Part 8; FAR 25.853 (A)

Appendix F Part. I (a)(1)(ii);

UNE 23.727 90: M2; EN 1021 Part 1 & 2;

DIN 4102 (B2); ÖNORM B 3825; ÖNORM B 3800

Teil 1; CALIFORNIA T.B. 117-2013; UFAC Fabric

- Class I; NFP 92.503: M2; EN 71-2; UNI 9175:

1.IM;ECE R118



Cigarette test



Match test



Wash in dry



Avoid drying in the sun



Don't use bleach



Waterproof



Antistatic



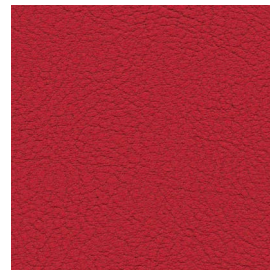
Antibacterial



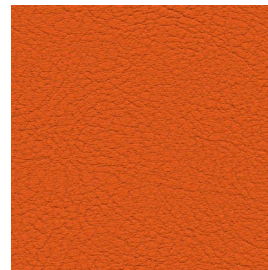
Antiallergic



Without chemical products



VA16 (107-2075)



VA9 (107-6019)



VA10 (107-6012)



VA6 (107-5069)



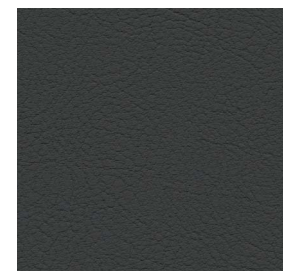
VA15 (107-0034)



VA5 (107-3067)



VA7 (107-3001)



VA11 (107-9035)



VA14 (107-4052)



VA38 (107-4045)

GROUP 04
ERA



camira

Tech data sheet

Composition

100% Polyester

Width 140 cm

Weight 320 g/m² ± 5%

Resistance to abrasion

+ 100.000 (Martindale cycles) ISO 12947-2

Colour fastness to light

UNE-EN ISO 105-B02. Method 2: 5

Fastness to Rubbing

Dry: UNE-EN ISO / 105-X122003 4

Wet: UNE-EN ISO 105-X122003 4

Inflammability

UE: EN 1021-1:2006 (cigarette) EN 1021-2:2006 (match); UK: BS 5852:2006 (cigarette and match); BS 5852:2006 Crib 5; BS 7176:2007 Medium Hazard; DIN 4102-1:1998 classification B1; NF P92-503:2004 classification M.3; Class Uno UNI 8456 UNI 9174; CA TB 117-2013



Cigarette test



Match test



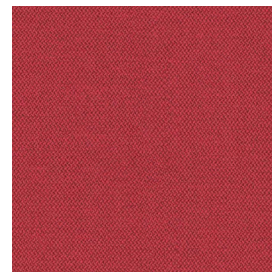
Wash in dry



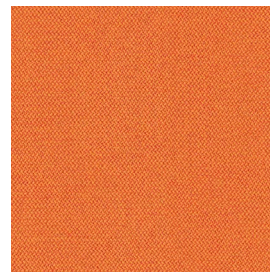
Avoid drying in the sun



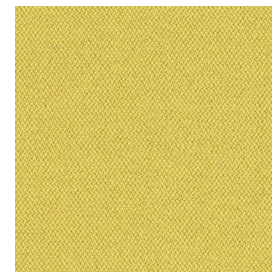
Don't use bleach



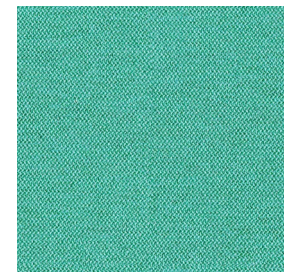
ER1 (CYCLE CSE06)



ER2 (SPAN CSE05)



ER3 (LIFETIME CSE03)



ER4 (REST CSE37)



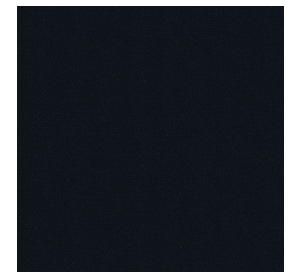
ER5 (FUTURIST CSE01)



ER6 (PERENNIAL CSE12)



ER7 (CHAPTER CSE08)



ER8 (FORWARD CSE14)



ER9 (ELAPSE CSE44)



ER10 (QUOTA CSE41)

GROUP 04
RIVET



camira

Tech data sheet

Composition

100% Recycled polyester

Width 140 cm

Weight 280 g/m² ± 5%

Resistance to abrasion

+ 80.000 (Martindale cycles) ISO 12947-2

Couleur fastness to light

UNE-EN ISO 105-B02. Method 2: 5-6

Fastness to Rubbing

Dry: UNE-EN ISO / 105-X122003 4

Wet: UNE-EN ISO 105-X122003 4

Inflammability

UE: EN 1021-1:2006 (cigarette) EN 1021-2:2006 (match); UK: BS 5852:2006 (cigarette and match); BS 5852:2006 Crib 5; BS 7176:2007 Medium Hazard; DIN 4102-1:1998 classification B1; NF P92-503:2004 classification M.3; Class Uno UNI 8456 UNI 9174; CA TB 117-2013



Cigarette test



Match test



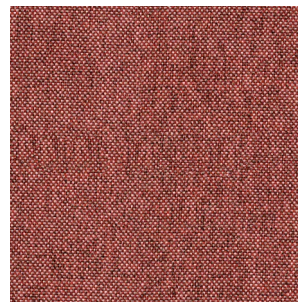
Wash in dry



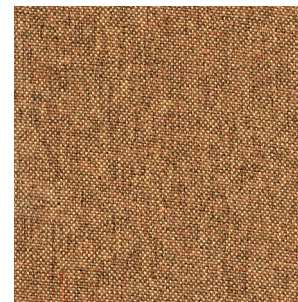
Avoid drying in the sun



Don't use bleach



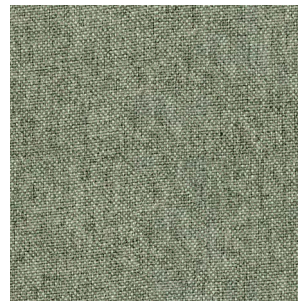
RV1 (FORGE EGL12)



RV2 (COPPER EGL14)



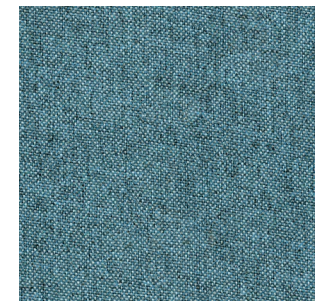
RV3 (SPARK EGL10)



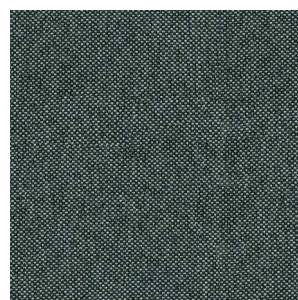
RV4 (FERROUS EGL15)



RV5 (VITREOUS EGL01)



RV6 (QUENCH EGL23)



RV7 (CHARCOAL EGL37)



RV8 (GALVANISE EGL26)

GROUP 04 FLORIDA LEATHER



VERY IMPORTANT!



Light colors and white are excluded from warranty due to color transmission from external fabrics (jeans, dyed clothes, etc.).



Tech data sheet

Composition

100% Bovine Leather

Tear growth resistance

EN ISO 3377-1

>20N

Fastness to Rubbing

Dry: 4-5 / Wet 4-5

(grade 1-5; 5 best value).

Colour fastness to light

UNE-EN ISO 105-B02. Method 5: 5

(grade 1-8; 8 best value).

Permanent creasing behavior

UNE EN ISO 5402 - 50.000 cycles

Finish adhesion

UNE EN ISO 11644

Inflammability

UE: EN 1021-1/2:2006

UK: BS 5852:1979



Cigarette test



Match test



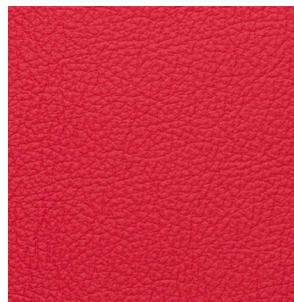
Don't use bleach



Wash with wet cloth



Avoid drying in the sun



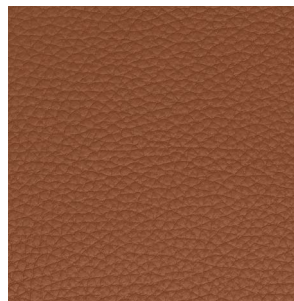
PL8 (RED 130010)



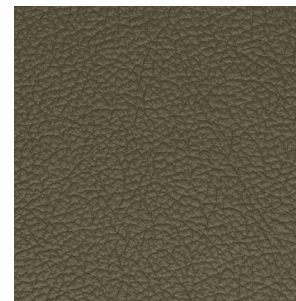
PL4 (ALMOND 130004)



PL5 (TABACCO 130005)



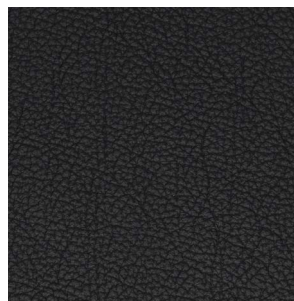
PL3 (CAMEL 130019)



PL7 (FOREST 130021)



PL6 (OCEAN 130009)



PL1 (BLACK 130007)



PL9 (TAUPE 130014)



PL18 (OPTIC WHITE 130001)

SPAZIO
EQUIS UPHOLSTERED BACK



FIDIVI*

Tech data sheet

Composition

100% Recycled polyester

Width 140 cm/ 54 in

Resistance to abrasion

+ 50.000 (Martindale cycles) ISO 12947-2

Colour fastness to light

>6 / ISO 105-B02 (Xenotest)

Fastness to Rubbing

Dry: UNE-EN ISO / 105-X122003 4/5

Wet: UNE-EN ISO 105-X122003 4/5

Pilling resistance

ISO 12945-2; Grade 1-5; 5

Inflammability

UE: EN 1021-1:2006 (cigarette) EN 1021-2:2006 (match)



Avoid drying
in the sun



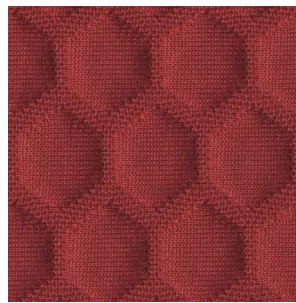
Wash in dry



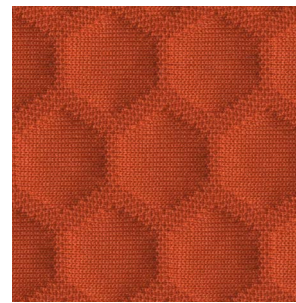
Cigarette
test



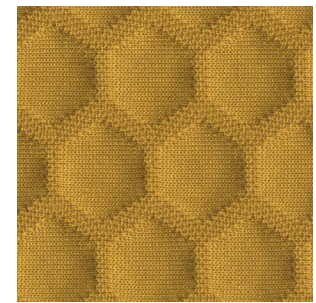
Match test



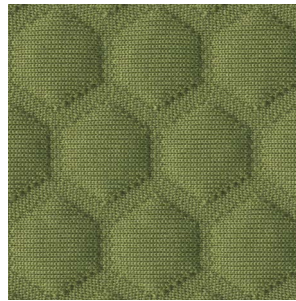
SP6 (4021)



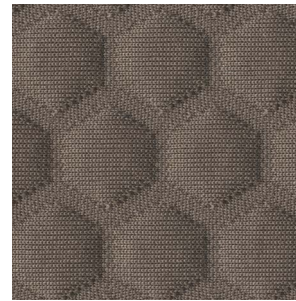
SP10 (4066)



SP5 (3030)



SP4 (7021)



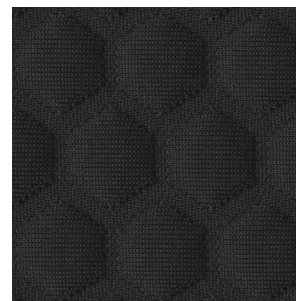
SP1 (2019)



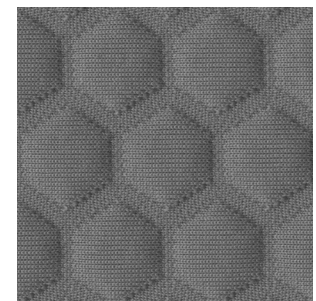
SP8 (6017)



SP7 (7033)



SP2 (8033)



SP3 (8017)

RHYTHM MESH EQUIS



Gabriel

Tech data sheet

Composition

100% Fire retardant polyester

Width 160 cm/ 63 in

Weight 525 g/lm

Resistance to abrasion

+ 70.000 (Martindale cycles) ISO 12947-2/14465

Resistance to abrasion wyzenbeek (ASTM D4157-07)

(severe use) +100.000 (Martindale cycles)

Pilling resistance

UNE-EN ISO 12945-2:2001 5/5

Fastness to Rubbing Dry

Dry: UNE-EN ISO / 105-X122003 4/5

Wet: UNE-EN ISO 105-X122003 4/5

Acoustic test air flow resistance

EN 29053 & ISO 9053-1

Couleur fastness to light

UNE-EN ISO 105-B02 method 2

Dry cleaning fastness

BS EN ISO 6330 4M 40 C PC

Inflammability

UE: EN 1021-1:2006 (cigarette) EN 1021-2:2006 (match);

UK: BS 5852:2006 (cigarette and match); BS 5852:2006

Crib 5; BS 7176:2007 Medium Hazard; DIN 4102-1:1998

classification B1; NF P92-503:2004 classification M.3;

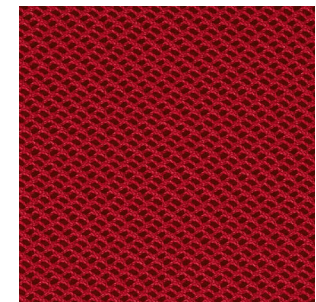
Class Uno UNI 8456 UNI 9174; CA TB 117-2013



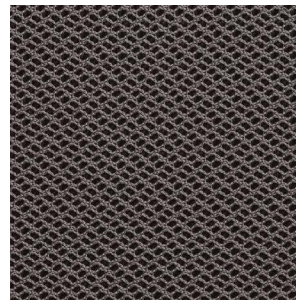
02 (BLACK)



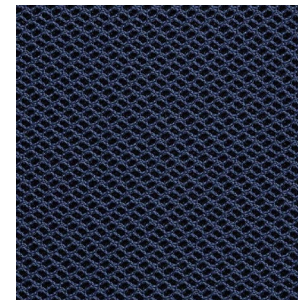
05 (BLUE)



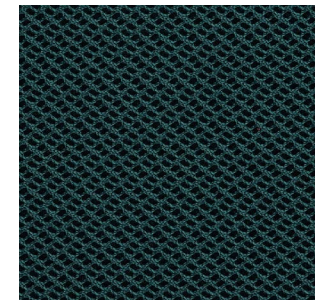
18 (RED)



22 (ANTHRACITE)



27 (SEA BLUE)



30 (DARK GREEN)



Cigarette
test



Match test



Wash in dry



Avoid drying
in the sun



Don't use
bleach

BATYLINE MESH

SKENA, ATIKA, ATIKAPRO,
SPLASH & CONFIDENT



SergeFerrari

Tech data sheet

Fabric components

PVC: 75 %

PES: 25 %

Composition

Warp yarn: 4.700 dtex

Weft yarn: 4.700 dtex

Width Min 140 cm - Max 235 cm

Weight 560 gr/m² UNI 9213/3

Thickness 1 mm

Resistance to abrasion

EN ISO 12947-2:1998

+ 100.000 (Martindale cycles)

Breaking strength

UNI in ISO 1421

Weft: 230 Kg/5cm / Warp: 275Kg/5cm

Fastness to Rubbing

EN ISO 105-x12:2003

col. 4165, 1101, 2102, 4154, 4104, 1195

5 - val. max

Coulour fastness to light

EN ISO 4892-2/06

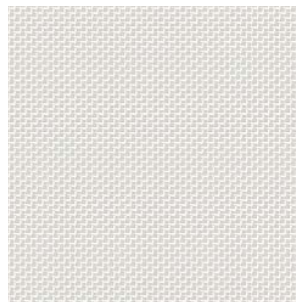
col. 0152, 5154, 1140, 0600, 4202, 0108, 4104, 1100,

2116 8 - val. max

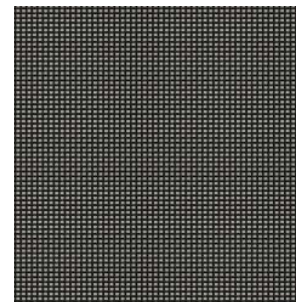
Fatigue strength

UNE-EN ISO 13934 EN1728:2000 - EN

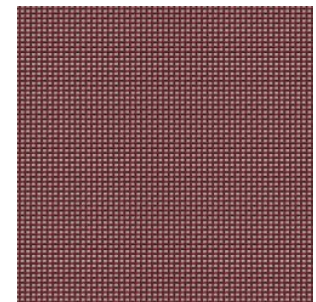
Level 3° hard > 200.000 cycles / 1.000 N



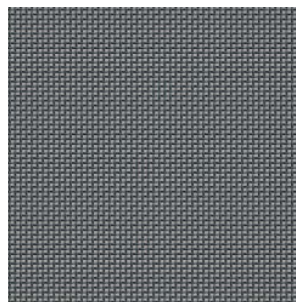
01 (WHITE)



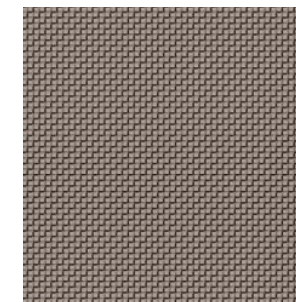
02 (BLACK)



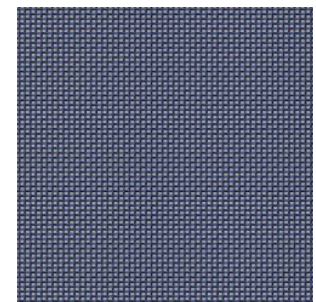
18 (RED)



22 (GRAY)



26 (BROWN)



27 (BLUE)



Avoid drying
in the sun



Don't use
bleach



Wash in dry

BATYLINE MESH

ACER+



SergeFerrari

Tech data sheet

Fabric components

PVC: 75 %

PES: 25 %

Composition

Warp yarn: 4.700 dtex

Weft yarn: 4.700 dtex

Width Min 140 cm - Max 235 cm

Weight 560 gr/m² UNI 9213/3

Thickness 1 mm

Resistance to abrasion

EN ISO 12947-2:1998

+ 100.000 (Martindale cycles)

Breaking strength

UNI in ISO 1421

Weft: 230 Kg/5cm / Warp: 275Kg/5cm

Fastness to Rubbing

EN ISO 105-x12:2003

col. 4165, 1101, 2102, 4154, 4104, 1195

5 - val. max

Coulour fastness to light

EN ISO 4892-2/06

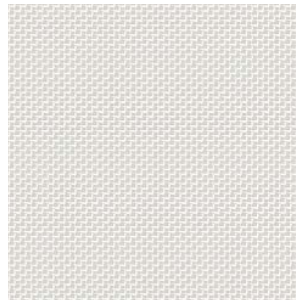
col. 0152, 5154, 1140, 0600, 4202, 0108, 4104, 1100,

2116 8 - val. max

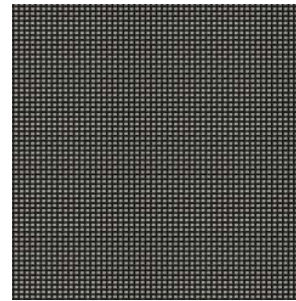
Fatigue strength

UNE-EN ISO 13934 EN1728:2000 - EN

Level 3° hard > 200.000 cycles / 1.000 N



01 (WHITE)



02 (BLACK)



Avoid drying
in the sun



Don't use
bleach



Wash in dry

MESH

ATIKA AIR & SKENA AIR



Tech data sheet

Composition

65% Polyester / 35% Elastomer.

Weight

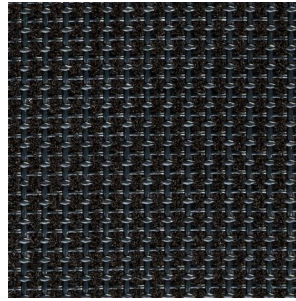
550 gr/m².

Abrasion resistance

50.000 cycles EN ISO 12947-2 Martindale

Inflammability

UE: EN 1021-1:2006 (cigarette) EN 1021-2:2006 (match); UK: BS 5852:2006 (cigarette and match)



02 (BLACK)



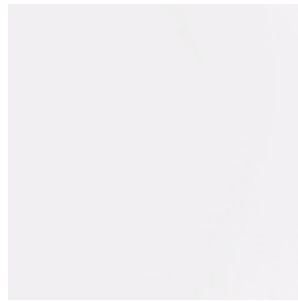
Cigarette
test



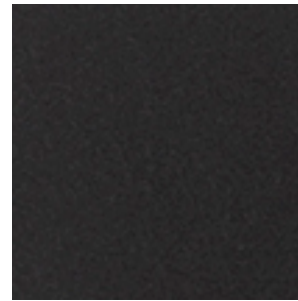
Match test

u p h o l s t e r e d s

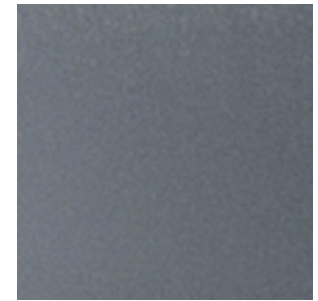
POLYPROPYLENE
AITANA, ATENEA & ATLANTA



01 RAL 9003



02 RAL 9005



22 RAL 7024



28 RAL 1019



32 RAL 5014

u p h o l s t e r e d s

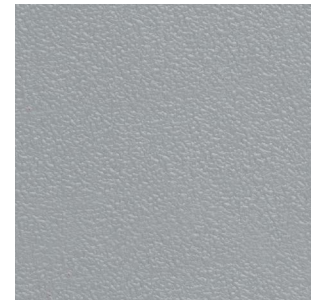
POLYPROPYLENE SPLASH



01 RAL 9003

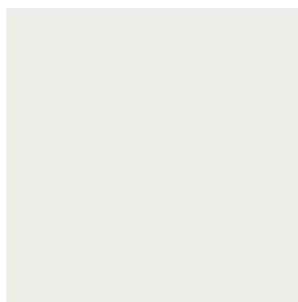


02 RAL 9005



22 RAL 7040

ELASTOMER
AITANA & CALMA



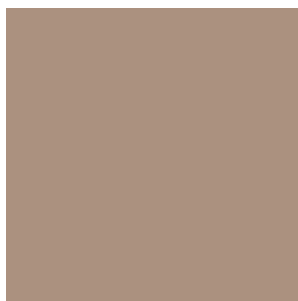
01 RAL 9003



02 RAL 9005



22 RAL 7024



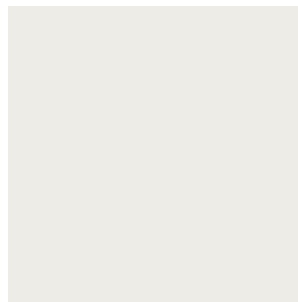
28 RAL 1019



32 RAL 5014

WOOD

AITANA, SPERA & CUSTOM



01 WHITE LACQUERED



02 BLACK LACQUERED



03 OAK STAIN



19 NATURAL DYE

WOOD STAIN
MANES



03 OAK STAIN



19 NATURAL STAIN

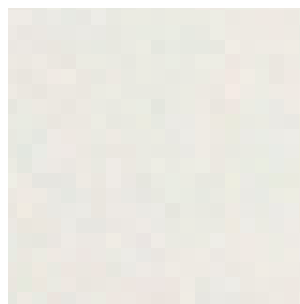


41 WHITE STAIN

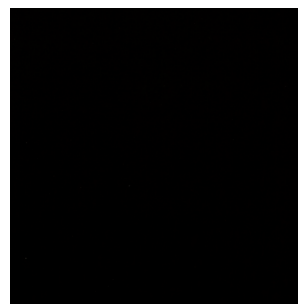


42 BLACK STAIN

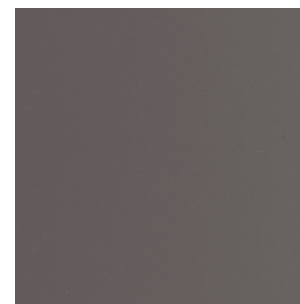
METALS



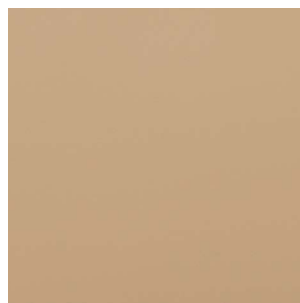
01 RAL 9003



02 RAL 9005



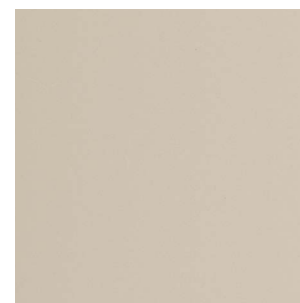
22 RAL 7024



28 RAL 1019



32 RAL 5014



33 RAL 9006



34 RAL 6013

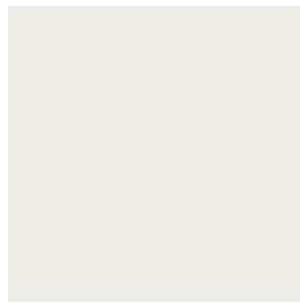


35 RAL 8023



36 RAL 3009

PHENOLIC



01 WHITE



02 BLACK



22 GRAPHITE



37 WALNUT