

# FABRIC



# OTE Sunday

A

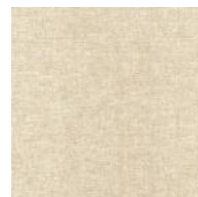
Component 100%polyester  
 Width 1.42±2cm  
 Weight (g/m2) 380gsm  
 Color fastness to wash(discoloration) ≥4.0  
 Color fastness to wash(staining) ≥3-4  
 Color fastness to light 4.0  
 Color fastness to rubbing Dry≥4.0 Wet≥3-4  
 Pilling 4-5@(5000rubs)  
 Abrasion >40000rubs

成分 100% 涤纶  
 宽度 1.42±2 厘米  
 重量 (克 / 平方米) 380 克  
 洗涤时的色牢度 (变色) ≥ 4.0  
 洗涤时的色牢度 (染色) ≥ 3-4  
 光线的色牢度 4.0  
 摩擦色牢度 干≥ 4.0 湿≥ 3-4  
 起球 4.0@(5000rubs)  
 磨损 >40000 转

## Standard Colours



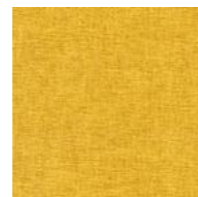
Sunday - 149



Sunday - 02



Sunday - 27



Sunday - 83



Sunday - 39



Sunday - 34



Sunday - 10



Sunday - 80



Sunday - 103



Sunday - 22



Sunday - 53

## 25 Days

## Other Colours

## +15 Days



Sunday - 01



Sunday - 40



Sunday - 41



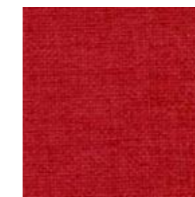
Sunday - 04



Sunday - 29



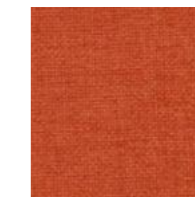
Sunday - 269



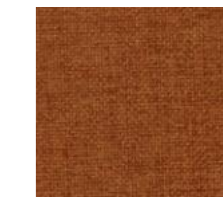
Sunday - 43



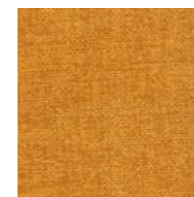
Sunday - 57



Sunday - 66



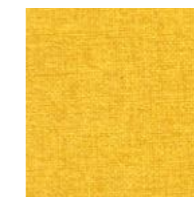
Sunday - 150



Sunday - 148



Sunday - 15



Sunday - 99



Sunday - 51



Sunday - 42



Sunday - 158



Sunday - 46



Sunday - 67



Sunday - 68



Sunday - 52



Sunday - 24



Sunday - 50



Sunday - 45



Sunday - 93



Sunday - 156



Sunday - 21



Sunday - 39



Sunday - 204



Sunday - 32



Sunday - 30

\* 颜色以实物为准  
 \* The actual product shall prevail.

\* 颜色以实物为准  
 \* The actual product shall prevail.



Sunday - 69



Sunday - 31



Sunday - 47



Sunday - 74



Sunday - 35



Sunday - 71



Sunday - 38

# OTE Vico

A

<b>Component</b>	93%polyester, 5%cotton, 2%nylon
<b>Width</b>	142±2cm
<b>Weight (g/m2)</b>	390g
<b>Color fastness to wash(discoloration)</b>	≥4.0
<b>Color fastness to wash(staining)</b>	≥3-4
<b>Color fastness to light</b>	≥4.0
<b>Color fastness to rubbing</b>	Dry≥4.0 Wet≥3-4
<b>Pilling</b>	4.0@(5000rubs)
<b>Abrasion</b>	>40000rubs

<b>成分</b>	93% 涤纶, 5% 棉, 2% 尼龙
<b>宽度</b>	142±2 厘米
<b>重量 (克 / 平方米)</b>	390 克
<b>洗涤时的色牢度 (变色)</b>	≥ 4.0
<b>洗涤时的色牢度 (染色)</b>	≥ 3-4
<b>光线的色牢度</b>	4.0
<b>摩擦色牢度</b>	干 ≥ 4.0 湿 ≥ 3-4
<b>起球</b>	4.0@ (5000rubs)
<b>磨损</b>	>40000 转

## Standard Colours

25 Days



Vico - 04



Vico - 09



Vico - 41



Vico - 11



Vico - 08



Vico - 33



Vico - 20



Vico - 47



Vico - 64

\* 颜色以实物为准  
\* The actual product shall prevail.

# OTE Decent

A

<b>Component</b>	100%polyester
<b>Width</b>	142±2cm
<b>Weight (g/m2)</b>	360g
<b>Color fastness to wash(discoloration)</b>	≥4.0
<b>Color fastness to wash(staining)</b>	≥3-4
<b>Color fastness to light</b>	≥4.0
<b>Color fastness to rubbing</b>	Dry≥4.0 Wet≥3-4
<b>Pilling</b>	4.0@(5000rubs)
<b>Abrasion</b>	>40000rubs

<b>成分</b>	100% 涤纶
<b>宽度</b>	142±2 厘米
<b>重量 (克 / 平方米)</b>	360 克
<b>洗涤时的色牢度 (变色)</b>	≥ 4.0
<b>洗涤时的色牢度 (染色)</b>	≥ 3-4
<b>光线的色牢度</b>	≥ 4.0
<b>摩擦色牢度</b>	干 ≥ 4.0 湿 ≥ 3-4
<b>起球</b>	4.0@ (5000rubs)
<b>磨损</b>	>40000 转

## Standard Colours

35 Days



Decent - 21



Decent - 02



Decent - 15



Decent - 26



Decent - 09



Decent - 29



Decent - 10

\* 颜色以实物为准  
\* The actual product shall prevail.

# Hafeele LE5200

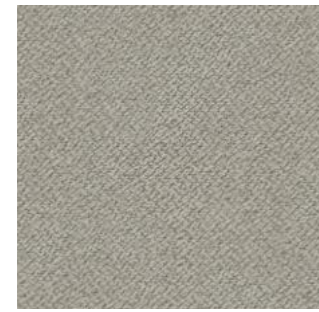
A

Component 100%polyester  
Width 150cm±2cm  
Weight (g/m2) 270±12g/m<sup>2</sup>  
Colorfastness to water 4-5  
Colorfastness to rubbing 4-5  
Colorfastness to light >4  
Abrasion >70000

成分 100% 涤纶  
宽度 150cm±2 厘米  
重量 (克 / 平方米) 270±12 克每平方米  
耐水色牢度 4-5  
耐摩色牢度 4-5  
耐光色牢度 >4  
耐磨 >70000

## Standard Colours

25 Days



LE5200-16



LE5200-14



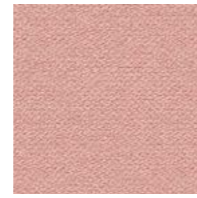
LE5200-38



LE5200-39



LE5200-27



LE5200-05



LE5200-08



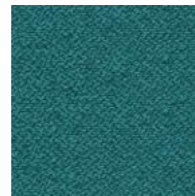
LE5200-28



LE5200-47



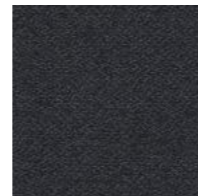
LE5200-35



LE5200-13



LE5200-25



LE5200-20

# Hafeele LE9190

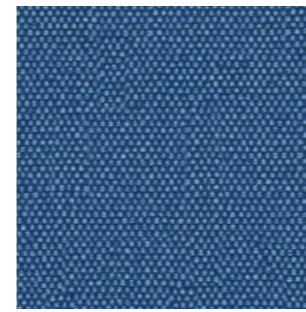
A

Component 100%polyester  
Width 145cm ±2cm  
Weight (g/m2) 280 ±12g/m<sup>2</sup>  
Colorfastness to water 4-5  
Colorfastness to rubbing 4-5  
Colorfastness to light 5  
Abrasion >70000

成分 100% 涤纶  
宽度 145cm ±2 厘米  
重量 (克 / 平方米) 280 ±12 克每平方米  
耐水色牢度 4-5  
耐摩色牢度 4-5  
耐光色牢度 5  
耐磨 >70000

## Standard Colours

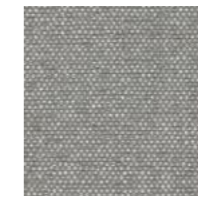
25 Days



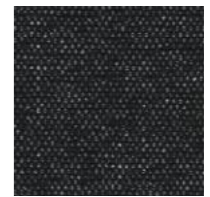
LE9190-36



LE9190-15



LE9190-17



LE9190-19



LE9190-01



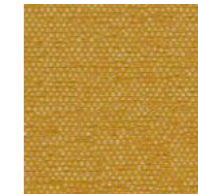
LE9190-02



LE9190-21



LE9190-23



LE9190-22



LE9190-29



LE9190-30

# Hafeele LE9140B

**B**

Component 100%polyester  
 Width 145cm ±2cm  
 Weight (g/m2) 365 ±12g/m<sup>2</sup>  
 Colorfastness to water ≥3  
 Colorfastness to rubbing ≥3  
 Colorfastness to light >4

成分 100% 涤纶  
 宽度 145cm ±2 厘米  
 重量 (克 / 平方米) 365 ±12 克每平方米  
 耐水色牢度 ≥3  
 耐摩色牢度 ≥3  
 耐光色牢度 >4

# Hafeele LE9180

**B**

Component 100%polyester  
 Width 140cm ±2cm  
 Weight (g/m2) 410 ±12g/m<sup>2</sup>  
 Colorfastness to water 4-5  
 Colorfastness to rubbing 4-5  
 Colorfastness to light >4  
 Abrasion >100000

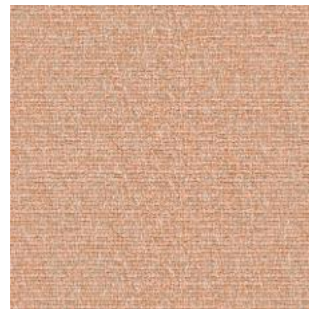
成分 100% 涤纶  
 宽度 140cm ±2 厘米  
 重量 (克 / 平方米) 410 ±12 克每平方米  
 耐水色牢度 4-5  
 耐摩色牢度 4-5  
 耐光色牢度 >4  
 耐磨 >100000

## Standard Colours

25 Days

## Standard Colours

25 Days



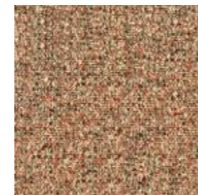
LE9140B - 33



LE9140B - 01



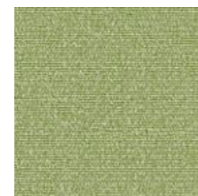
LE9140B - 02



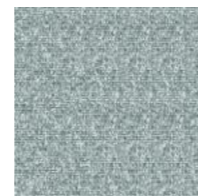
LE9140B - 35



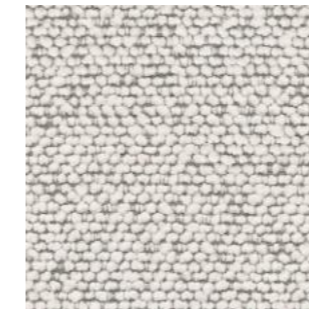
LE9140B - 38



LE9140B - 16



LE9140B - 27



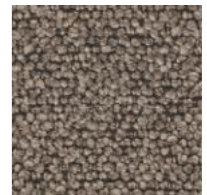
LE9180-09



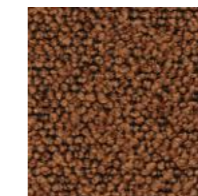
LE9180-01



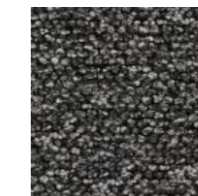
LE9180-02



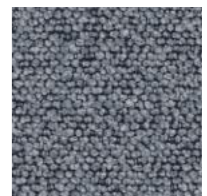
LE9180-03



LE9180-06



LE9180-13



LE9180-14

# Gabriel Medley

B

<b>Composition</b>	100% Polyester	<b>成分</b>	100% 涤纶
<b>Weight</b>	510 g/lm — 16.45 oz/lin.yd	<b>克重 (克 / 码)</b>	510 g/lm — 16.45 oz/lin.yd
<b>Width</b>	140 cm — 55 inches	<b>幅宽 (厘米 / 英寸)</b>	140 厘米 — 55 英寸
<b>Abrasion</b>	75000	<b>耐磨度</b>	75000
<b>Pilling</b>	4	<b>抗起球性能</b>	4
<b>Light fastness</b>	5-7	<b>光照色牢度</b>	5-7
<b>Rubbing fastness</b>	4-5	<b>摩擦色牢度</b>	4-5

## Standard Colours



Medley- 60167



Medley - 61002



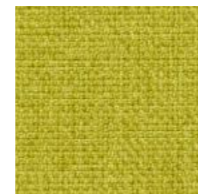
Medley - 61003



GM - 60004



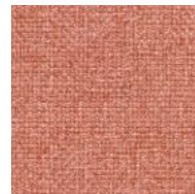
Medley - 62002



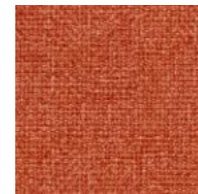
Medley - 68002



Medley - 68005



Medley - 63064



Medley - 63017



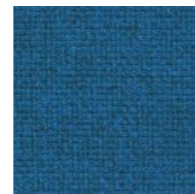
Medley - 66145



Medley - 66010



Medley - 67053



Medley - 66007

## 25 Days

## Other Colours

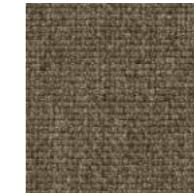
+15 Days



Medley - 61189



Medley - 60003



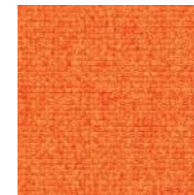
Medley - 61004



Medley - 60999



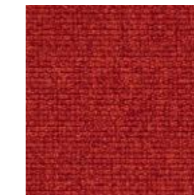
Medley - 66008



Medley - 63013



Medley - 63063



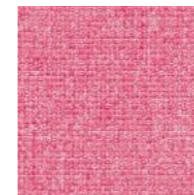
Medley - 63016



Medley - 64123



Medley - 64019



Medley - 64124



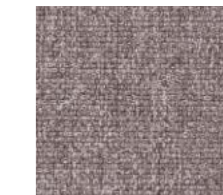
Medley - 64125



Medley - 65012



Medley - 65086



Medley - 65011



Medley - 62054



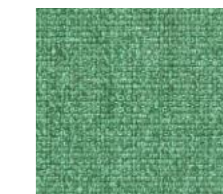
Medley - 67002



Medley - 68114



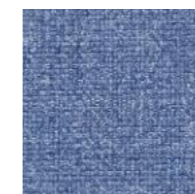
Medley - 68115



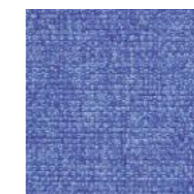
Medley - 67054



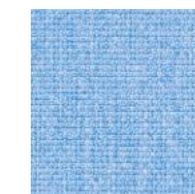
Medley - 67006



Medley - 66144



Medley - 66009



Medley - 67052

# Novatex NA

B

**Composition** 79% Polyester, 13%  
Acrylic, 8% Viscosa  
**Abrasion** ≥20000  
**Rubbing** 4-4.5

**面料成分** 79% 聚酯纤维, 13% 腈纶,  
8% 粘胶  
**耐磨度** ≥ 20000 转  
**抗起球度** 4-4.5

# MAYA A2267

B

**Composition** P81% A19%  
**Weight** 620g/m  
**Width** 145cm  
**Minimum Order Quantity** 350

**成分** 涤纶 81% A19%  
**重量 (克 / 平方米)** 620 克 / 米  
**宽度 (厘米)** 145 厘米  
**起订量** 350

## Standard Colours

25 Days

## Standard Colours

25 Days



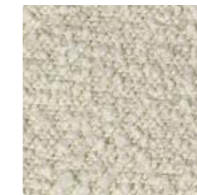
NA - 14



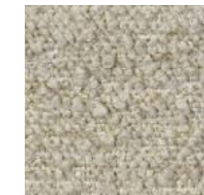
NA - 71



A2267 - 2A



A2267 - 1A



A2267 - 7A



A2267 - 3A



A2267 - 9A



A2267 - 11A

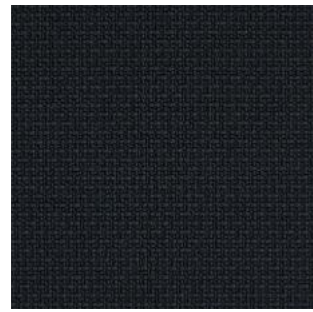
# Gabriel Mozart

C

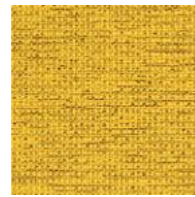
Composition 100% Polyester  
 Weight 600 g/lm — 19.35 oz/lin.yd  
 Width 140 cm — 55 inches  
 Abrasion 80000  
 Pilling 4  
 Light fastness 5-7  
 Rubbing fastness dry/wet 4-5

成分 100% 涤纶  
 克重 (克 / 码) 600/19.35  
 幅宽 (厘米 / 英寸) 140 厘米 — 55 英寸  
 耐磨性能 80000  
 抗起球性能 4  
 光照色牢度 5-7  
 摩擦色牢度 4-5

## Standard Colours



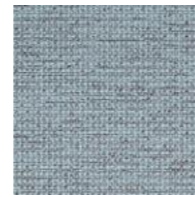
Mozart - 60999



Mozart - 62061



Mozart - 64138



Mozart - 66010



Mozart - 68139



Mozart - 68143

## 25 Days

## Other Colours

## +15 Days



Mozart - 61163



Mozart - 61206



Mozart - 61207



Mozart - 61211



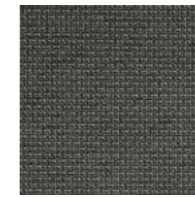
Mozart - 61208



Mozart - 60186



Mozart - 60188



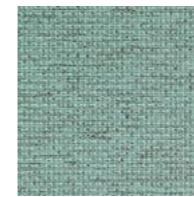
Mozart - 68140



Mozart - 60189



Mozart - 61146



Mozart - 66175



Mozart - 68145



Mozart - 68144



Mozart - 68141



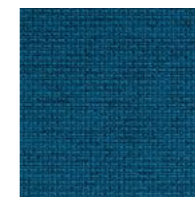
Mozart - 68142



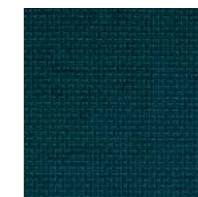
Mozart - 66175



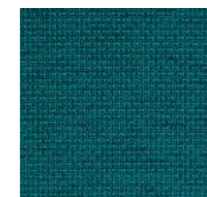
Mozart - 66159



Mozart - 67063



Mozart - 67033



Mozart - 67066



Mozart - 64135



Mozart - 64194



Mozart - 65106



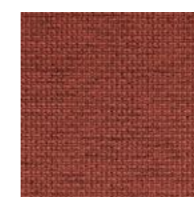
Mozart - 66160



Mozart - 66136



Mozart - 64136



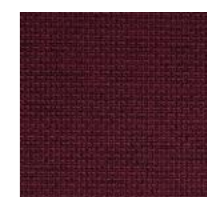
Mozart - 63076



Mozart - 64137



Mozart - 64139



Mozart - 64140

\* 颜色以实物为准  
 \* The actual product shall prevail.

\* 颜色以实物为准  
 \* The actual product shall prevail.



Mozart - 68146



Mozart - 62063



Mozart - 62065



Mozart - 63077

# SYMPHONY MILLS-Eden

C

**Composition** 100% PES  
**Roll-length** 35 m  
**Weight** 644g/Lm  
**Width** 143cm  
**Abrasion** 85000rubs

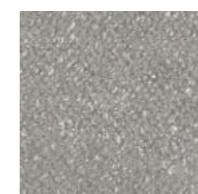
**成分** 100% PES  
**宽度** 35 米  
**克重 (克 / 卢米)** 644 克 / 卢米  
**幅宽 (厘米 / 英寸)** 143 厘米  
**耐磨性能** 85000 转

## Standard Colours

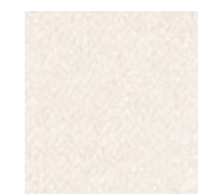
25 Days



Eden - 800



Eden - 803



Eden - 901

\* 颜色以实物为准  
 \* The actual product shall prevail.

\* 颜色以实物为准  
 \* The actual product shall prevail.

# Novatex ART.7525

C

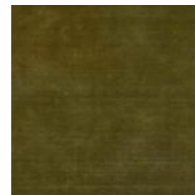
Composition 100% Polyester  
Abrasion ≥20000  
Rubbing 4-4.5

面料成分 100% 涤纶  
耐磨度 ≥ 20000 转  
抗起球度 4-4.5

## Standard Colours



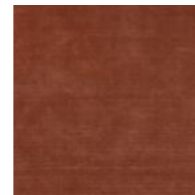
ART.7525-102



ART.7525-59



ART.7525-56



ART.7525-126

## 25 Days

## Other Colours

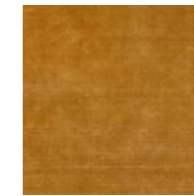
## +15 Days



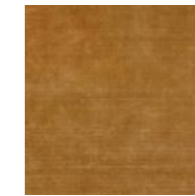
ART.7525-01



ART.7525-05



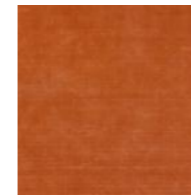
ART.7525-132



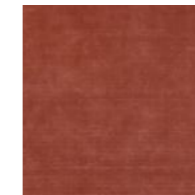
ART.7525-28



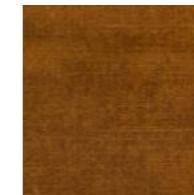
ART.7525-96



ART.7525-100



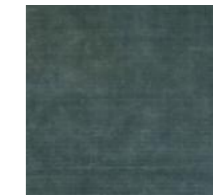
ART.7525-92



ART.7525-126



ART.7525-156



ART.7525-158



ART.7525-149



ART.7525-180



ART.7525-68



ART.7525-67

# Gabriel Vienna

C

Composition	100% Polyester	成分	100% 涤纶
Weight	635 g/lm — 22.4 oz/lin.yd	克重 (克 / 码)	635/22.4
Width	140 cm — 55 inches	幅宽 (厘米 / 英寸)	140/55
Abrasion	80000	耐磨性能	80000
Pilling	4	抗起球性能	4
Light fastness	5-7	光照色牢度	5-7
Rubbing fastness	4-5	摩擦色牢度	4-5

## Standard Colours



Vienna - 61234



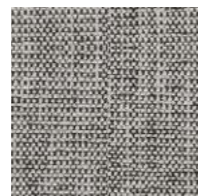
Vienna - 61168



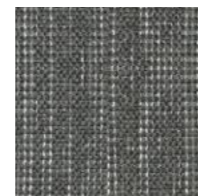
Vienna - 61163



Vienna - 61189



Vienna - 60147



Vienna - 60025

## 25 Days

## Other Colours

## +15 Days



Vienna - 60215



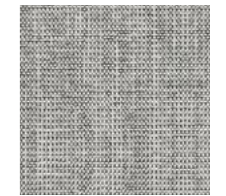
Vienna - 60094



Vienna - 61230



Vienna - 60213



Vienna - 60112



Vienna - 60003



Vienna - 60312



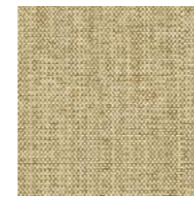
Vienna - 61141



Vienna - 61235



Vienna - 60999



Vienna - 61202



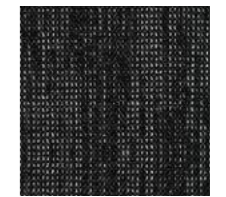
Vienna - 68245



Vienna - 61436



Vienna - 61072



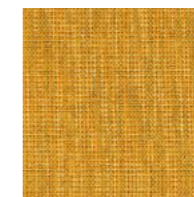
Vienna - 60900



Vienna - 62002



Vienna - 62086



Vienna - 63085



Vienna - 61036



Vienna - 63080



Vienna - 63099



Vienna - 63118



Vienna - 63117



Vienna - 65084



Vienna - 64043



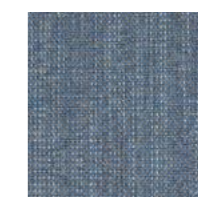
Vienna - 64058



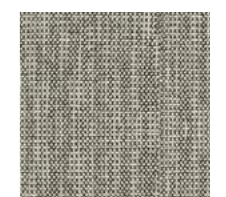
Vienna - 64187



Vienna - 60146



Vienna - 66205



Vienna - 61156

\* 颜色以实物为准  
\* The actual product shall prevail.

\* 颜色以实物为准  
\* The actual product shall prevail.



Vienna - 60408



Vienna - 66226



Vienna - 66411



Vienna - 68092



Vienna - 67040



Vienna - 68132



Vienna - 68145



Vienna - 68131



Vienna - 68246

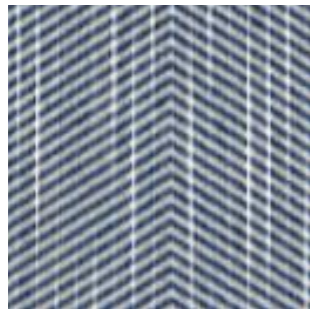
# Sunbrella

D

<b>Composition</b>	100% Acrylic Fiber	<b>面料成分</b>	100% 腈纶
<b>Lightfastness</b>	4-5	<b>光照色牢度</b>	4-5
<b>Pilling</b>	1	<b>抗起球度</b>	1

## Standard Colours

25 Days



Annex Cobalt - 44267 - 0004



Annex Guava - 44267 - 0006



Draft Classic - 145408 - 0001



Tropics Jungle - 145214 - 0000

\* 颜色以实物为准  
\* The actual product shall prevail.

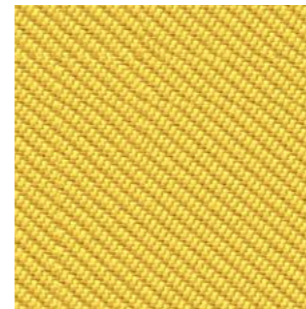
# Camira Oceanic

D

<b>Composition</b>	100% post-consumer recycled polyester	<b>成分</b>	100% 消费后再生聚酯
<b>Weight</b>	497 g/m <sup>2</sup> ±5% (696 g/lin.m ±5%)	<b>克重 (克 / 码)</b>	497 克 / 平方米 ±5%
<b>Width</b>	140 cm	<b>幅宽 (厘米 / 英寸)</b>	140 厘米
<b>Abrasion</b>	≥100,000	<b>耐磨性能</b>	≥ 100,000
<b>Light fastness</b>	5	<b>光牢度</b>	5
<b>Rubbing fastness</b>	Wet: 4 Dry: 4	<b>摩擦的牢度</b>	湿: 4 干: 4

## Standard Colours

25 Days



Oceanic - OOC07



Oceanic - OOC13



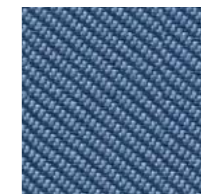
Oceanic - OOC04



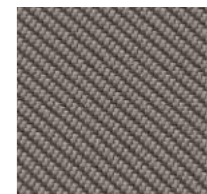
Oceanic - OOC03



Oceanic - OOC15



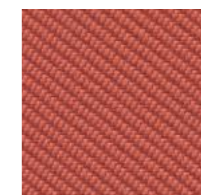
Oceanic - OOC11



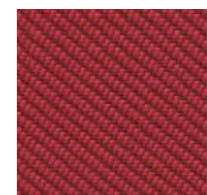
Oceanic - OOC08



Oceanic - OOC16



Oceanic - OOC12



Oceanic - OOC10

\* 颜色以实物为准  
\* The actual product shall prevail.

# Camira Blazer

D

<b>Composition</b>	100% Virgin Wool	<b>成分</b>	100% 初剪羊毛
<b>Weight</b>	460 g/m2 ±5%	<b>克重 (克 / 码)</b>	460 g/m2 ±5%
<b>Width</b>	140 cm minimum	<b>幅宽 (厘米 / 英寸)</b>	140 厘米
<b>Abrasion</b>	≥45,000	<b>耐磨性能</b>	≥ 45,000
<b>Light fastness</b>	4-6	<b>光牢度</b>	4-6
<b>Rubbing fastness dry/w</b>	Wet: 4, Dry: 4	<b>摩擦的牢度</b>	湿: 4, 干: 4

# Kvadrat Revive 1

D

<b>Composition</b>	100% recycled polyester FR	<b>成分</b>	100% 再生聚酯纤维, 阻燃
<b>Weight</b>	420 g/lin. m (13.55 oz/ ly)	<b>克重 (克 / 码)</b>	420 克 / 米 (13.55 盎司 / 米)
<b>Width</b>	Approx. 140 cm (Approx. 55")	<b>幅宽 (厘米 / 英寸)</b>	约 140 厘米 (约 55 英寸)
<b>Durability</b>	60000 Martindale	<b>耐磨性能</b>	60000 次马丁代尔测试
<b>Pilling</b>	4-5	<b>起球性</b>	4-5
<b>Lightfastness</b>	7	<b>光照色牢度</b>	7
<b>Fastness to rubbing</b>	5(Dry) 4-5(Wet)	<b>摩擦色牢度</b>	5 (干摩) ; 4-5 (湿摩)
<b>Seam slippage</b>	3.5mm(warp), 4mm(weft)	<b>接缝滑移</b>	3.5mm (经纱) ; 4mm (纬纱)

## Standard Colours

25 Days



Blazer - CUZ1E



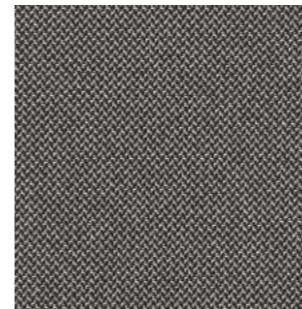
Blazer-CUZ1W



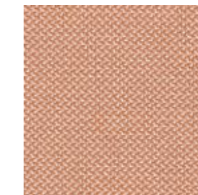
Blazer - CUZ30

## Standard Colours

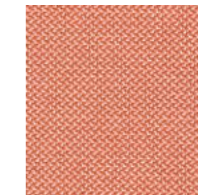
25 Days



Revive 1-0154



Revive 1-0414



Revive 1-0524



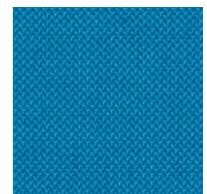
Revive 1-0634



Revive 1-0424



Revive 1-0914



Revive 1-0754

# Kvadrat Autumn

D

**Composition** 100% recycled polyester  
**Weight** 590 g/lin. m (19.03 oz/ ly)  
**Width** Approx. 140 cm (Approx. 55")  
**Durability** 50000 Martindale  
**Pilling** 4  
**Lightfastness** 7  
**Fastness to rubbing** 4-5(Dry) 4-5(Wet)  
**Seam slippage** 4mm(warp), 4mm(weft)

**成分** 100% 再生聚酯纤维  
**克重 (克 / 码)** 590 克 / 米 (13.55 盎司 / 米)  
**幅宽 (厘米 / 英寸)** 约 140 厘米 (约 55 英寸)  
**耐磨性能** 50000 次马丁代尔测试  
**起球性** 4  
**光照色牢度** 7  
**摩擦色牢度** 4-5 (干摩) ; 4-5 (湿摩)  
**接缝滑移** 4mm (经纱) ; 4mm (纬纱)

# Kvadrat Technicolour

D

**Composition** 100% british wool, worsted  
**Weight** 430 g/lin. m (13.87 oz/ ly)  
**Width** Approx. 140 cm (Approx. 55")  
**Durability** 80,000 Martindale  
**Pilling** 4  
**Lightfastness** 6  
**Fastness to rubbing** 4-5 (Dry) 3-4 (Wet)  
**Seam slippage** 10 mm (warp), 8.1 mm (weft)

**成分** 100% 英国羊毛, 精纺毛料  
**克重 (克 / 码)** 430 克 / 米 (13.87 盎司 / 米)  
**幅宽 (厘米 / 英寸)** 140 厘米 (约 55 英寸)  
**耐磨性能** 80,000 次马丁代尔测试  
**起球性** 4  
**光照色牢度** 6  
**摩擦色牢度** 4-5 (干摩) ; 3-4 (湿摩)  
**接缝滑移** 10 mm (经纱) ; 8.1 mm (纬纱)

## Standard Colours

25 Days



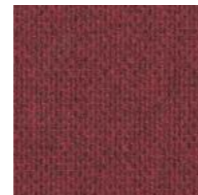
Autumn-0751



Autumn-0331



Autumn-0361



Autumn-0681



Autumn-0131

## Standard Colours

25 Days



Technicolour-830



Technicolour-930



Technicolour-970



Technicolour-870



Technicolour-210



Technicolour-340

# Kvadrat Remix 3

E

**Composition** 90% wool, worsted 10% nylon 90%  
**Weight** 420 g/lin. m (13.55 oz/ ly)  
**Width** Approx. 140 cm (Approx. 55")  
**Durability** 100,000 Martindale  
**Pilling** 5  
**Lightfastness** 6  
**Fastness to rubbing** 4-5 (Dry) 4 (Wet)  
**Seam slippage** 5 mm (warp), 3 mm (weft)

**成分** 90% 精纺羊毛, 10% 锦纶  
**克重 (克 / 码)** 420 克 / 米 (13.55 盎司 / 米)  
**幅宽 (厘米 / 英寸)** 约 140 厘米 (约 55 英寸)  
**耐磨性能** 100,000 次马丁代尔测试  
**起球性** 5  
**光照色牢度** 6  
**摩擦色牢度** 4-5 (干摩) ; 4 (湿摩)  
**接缝滑移** 5mm (经纱) ; 3mm (纬纱)

# Maharam Merit

E

**Composition** 76%Post-Consumer Recycled Polyester, 24%Polyester  
**Width** 54  
**Weight** 17.1  
**Abrasion** ≥100000  
**Acoustics:** AS/NZS 1530.3  
**Lightfastness** AATCC 16.3

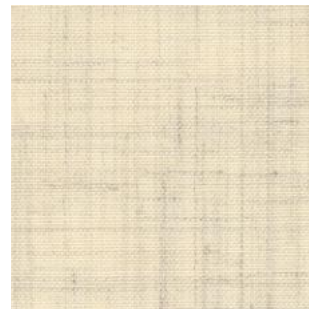
**面料成分** 76% 消费后再生聚酯, 24% 聚酯  
**宽度** 54 英寸  
**重量** 17.1 盎司  
**耐磨度** ≥ 100000 转  
**易燃性** AS/NZS 1530.3  
**耐光性** AATCC 16.3

## Standard Colours

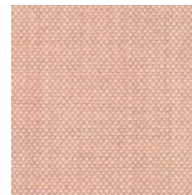
25 Days

## Standard Colours

25 Days



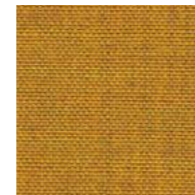
Remix - 30113



Remix - 30612



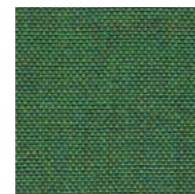
Remix - 30632



Remix - 30422



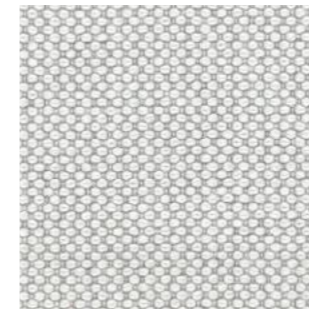
Remix - 30933



Remix - 30982



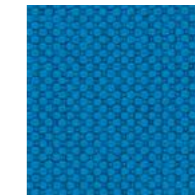
Remix - 30743



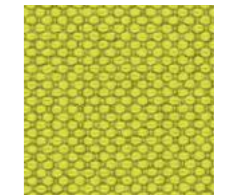
Merit-001 Trickle



Merit-004 Blackout



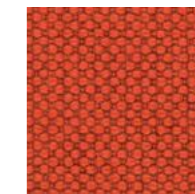
Merit-013 Zircon



Merit-022 Kiwi



Merit-025 Sunflower



Merit-037 Alert

# Maharam Meld

E

**Composition** 68% Post-Consumer Recycled Polyester, 32% Polyester  
**Width** 54  
**Weight** 16.5 oz/ly  
**Abrasion** ≥100000rubs  
**Acoustics** ASTM C423, 0.85 NRC  
**Lightfastness** AATCC 16.3

**面料成分** 68% 循环再利用聚酯纤维, 32% 聚酯纤维  
**宽度** 54 英寸  
**重量** 16.5 盎司  
**耐磨度** ≥ 100000 转  
**易燃性** ASTM C423, 0.85 NRC  
**耐光性** AATCC 16.3

## Standard Colours

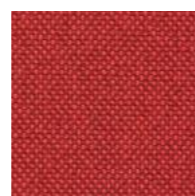
25 Days



Meld-001 Vast



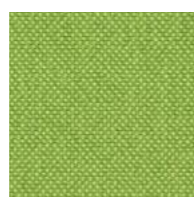
Meld-011 Stark



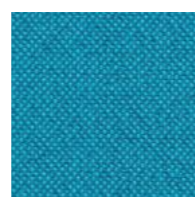
Meld-020 Magma



Meld-029 Comet



Meld-031 Wild



Meld-037 Reef

# Maharam Bright Grid

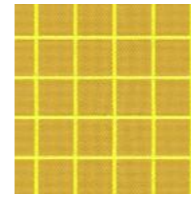
K

**Composition** 39% Cotton, 32% Polyester, 29%  
Solution-Dyed Nylon  
**Width** 54  
**Weight** 16oz/ly  
**Abrasion** ≥100000  
**Acoustics** AS/NZS 3837  
**Lightfastness** AATCC 16.3

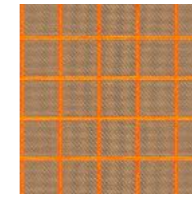
**面料成分** 39% 棉, 32% 涤纶,  
29% 溶液中色尼龙  
**宽度** 54 英寸  
**重量** 16 盎司  
**耐磨度** ≥ 100000 转  
**易燃性** AS/NZS 3837  
**耐光性** AATCC 16.3

## Other Colours

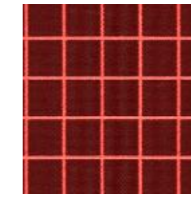
+15 Days



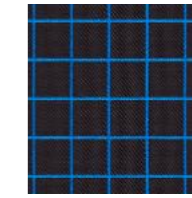
002 Hi-Lite



003 Safety



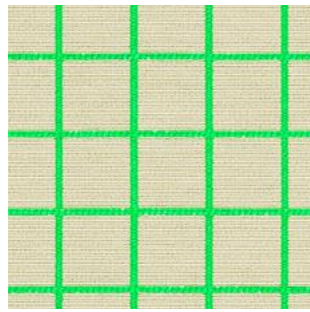
004 Raspberry



005 Scuba

## Standard Colours

25 Days



001 Spring

# DEDAR Tiger Mountain

K

Composition 63% Viscose, 37% Cotton  
Width 138 cm  
Weight 720 g/ml

面料成分 63% 粘胶, 37% 棉  
宽度 138 厘米  
重量 720 g/ml

## Standard Colours

25 Days



001



002



003

# Maharam Dot Pattern



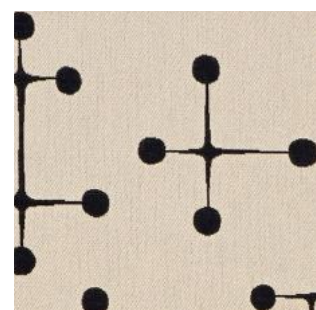
**Composition** 71% Cotton, 29% Polyester  
**Width** 54  
**Weight** 16.8 oz/ly  
**Abrasion** 63,000  
**Acoustics** AS/NZS 1530.3  
**Lightfastness** AATCC 16.3

**面料成分** 71% 棉, 29% 涤纶  
**宽度** 54 英寸  
**重量** 16.8 盎司  
**耐磨度** 63,000  
**易燃性** AS/NZS 1530.3  
**耐光性** AATCC 16.3

## Other Colours

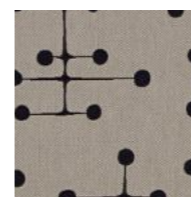
+15 Days

## Standard Colours

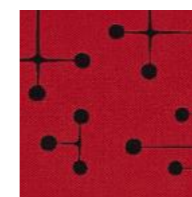


001 Document

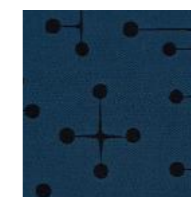
25 Days



002 Taupe



004 Red



005 Navy



**ADDRESS**  
Binjiang District  
BinAn rd. No.1181  
Hangzhou City  
Zhejiang Province, China

**CONTACT US**  
+86 400 166 8006  
[www.gradocontract.com](http://www.gradocontract.com)  
[info@gradocontract.com](mailto:info@gradocontract.com)

FOLLOW US



GRADO Website



@ G-GRADO

@ GRADO 商业家具

# FAUX LEATHER



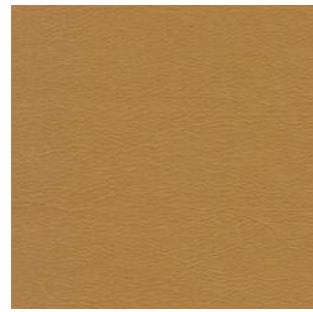
# PU Leather

A

Composition PU Leather  
Origin China

成分 仿皮  
产地 中国

## Standard Colours



PL-07



PL-01



PL-02



PL-03

## 25 Days

# ZHIHE YGF

A

Composition PU Leather  
Origin China

成分 仿皮  
产地 中国

## Standard Colours



YGF - 2010



YGF - 73589



YGF - 1618



YGF - 1892



YGF - 1899



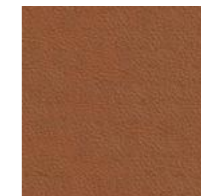
YGF - 1608



YGF - 1901



YGF - 77009



YGF - 1823



YGF - 73607



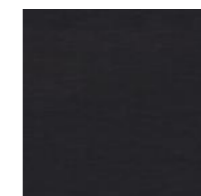
YGF - 72881



YGF - 1862



YGF - 2053



YGF - 1586

## 25 Days

\* 颜色以实物为准  
\* The actual product shall prevail.

\* 颜色以实物为准  
\* The actual product shall prevail.

RC

Composition Microfiber Leather  
Origin China

成分 超纤皮  
产地 中国

B

ART SHE

Composition Silicone Leather  
Width 138cm  
Roll Length 35m  
Thickness 1.5mm  
Color fastness to light 4.0  
Color fastness to rubbing Dry:4-5 Wet:4-5  
Abrasion >100000rubs

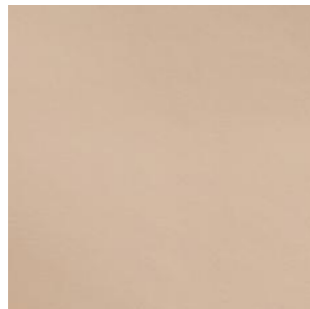
成分 硅胶皮  
宽度 138 厘米  
卷长 35 米  
厚度 1.5 毫米  
光线的色牢度 4.0  
摩擦色牢度 干:4-5 湿:4-5  
磨损 >100000 卢布

Standard Colours

25 Days

Standard Colours

25 Days



RC02 - 05



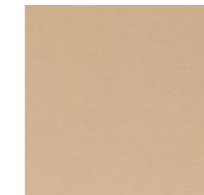
RC02 - 16



SHE 999-51



SHE 999-1



SHE 999-5



SHE 999-70



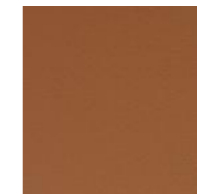
SHE 999-60



SHE 999-17



SHE 999-64



SHE 999-63



SHE 999-66



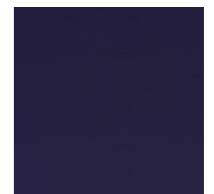
SHE 999-67



SHE 999-68



SHE 999-69



SHE 999-75



SHE 999-76

\* 颜色以实物为准  
\* The actual product shall prevail.

\* 颜色以实物为准  
\* The actual product shall prevail.

# ART Terra

B

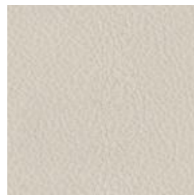
<b>Composition</b>	PU Leather	<b>成分</b>	仿皮
<b>Origin</b>	China	<b>产地</b>	中国
<b>Abrasion</b>	143000	<b>耐磨</b>	143000
<b>Colourfastness to light</b>	> 5	<b>光照色牢度</b>	> 5
<b>Colourfastness to rubbing</b>	4-5(wet); 4-5(dry)	<b>摩擦色牢度</b>	4-5 (湿); 4-5 (干)
<b>Seam performance</b>	3mm(warp), 3mm(weft)	<b>接缝滑移</b>	3mm (经); 3mm (纬)
<b>Antibacterial rate</b>	Staphylococcus aureus: 98%; Escherichia coli: 99%; Candida albicans: 84%	<b>抑菌率</b>	金黄色葡萄球菌: 98%; 大肠杆菌: 99%; 白色念珠菌: 84%

## Standard Colours

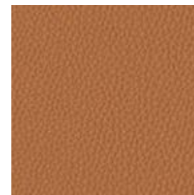
25 Days



Color-12-15



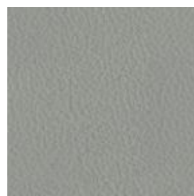
Color-12-2



Color-12-20



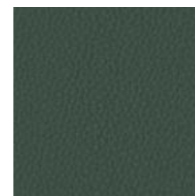
Color-12-25



Color-12-12



Color-12-13



Color-12-9

# LEATHER



ZHIHE  
YG

LO

Composition  
Origin

Leather  
China

成分  
产地

牛皮  
中国

GIESEN  
MILAN

LO

Composition  
Origin  
Thickness

Leather  
USA  
1.4-1.6 mm

成分  
产地  
厚度

牛皮  
美国  
1.4-1.6 mm

Standard Colours

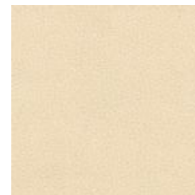
25 Days

Standard Colours

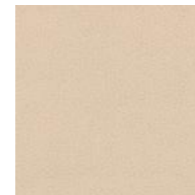
25 Days



YG - 2010



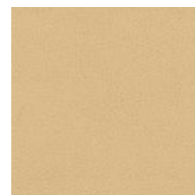
YG - 73589



YG - 1618



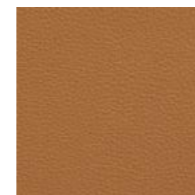
YG - 1892



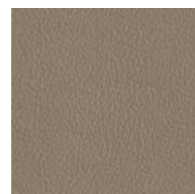
YG - 1899



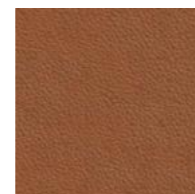
YG - 1608



YG - 1901



YG - 77009



YG - 1823



YG - 73607



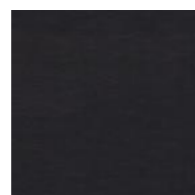
YG - 72881



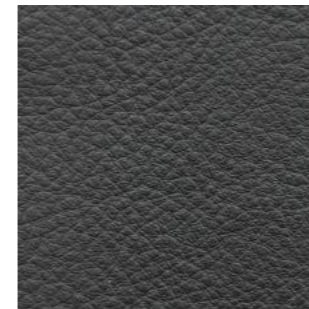
YG - 1862



YG - 2053



YG - 1586



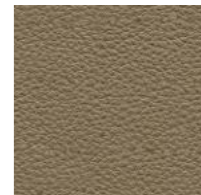
Milan-8815 炭黑色



Milan-8803 米灰色



Milan-8806 焦糖色



Milan-8809 卡其色

\* 颜色以实物为准  
\* The actual product shall prevail.

\* 颜色以实物为准  
\* The actual product shall prevail.

# LIANXING VINTAGE

L1

Composition Leather  
 Origin USA  
 Thickness 1.0-1.1 mm  
 Color Fastness to Rubbing ≥ 4 (Dry), > 3 (Wet), > 3 (Perspiration)  
 Flexing Endurance 50000 cycles  
 Tear Force > 20N  
 Color Fastness to Light > 5

成分 牛皮  
 产地 美国  
 厚度 1.0-1.1 mm  
 摩擦色牢度 ≥ 4 (干摩), > 3 (湿摩), > 3 (汗摩)  
 耐折牢度 50000 次  
 撕裂力 > 20N  
 耐光性 > 5

# JMT MILANO

L2

Composition Leather  
 Origin China  
 Thickness 0.9/1.1 mm  
 Colour fastness to-and-fro rubbing 4-5 (Dry), 4-5 (Wet), 3-4 (Perspiration)  
 Wyzenbeek 30,000  
 Colour fastness to light 5  
 Flexing Endurance 50,000  
 Tear Strength Min 20N

成分 牛皮  
 产地 中国  
 厚度 0.9/1.1 mm  
 往复摩擦色牢度 4-5 (干擦), 4-5 (湿擦), 3-4 (汗擦)  
 耐磨 30,000  
 耐光色牢度 5  
 耐折牢度 50,000  
 撕裂强度 最小 20N

## Standard Colours

25 Days



Vintage-415 橄榄绿



Vintage-AA7201  
(LO)



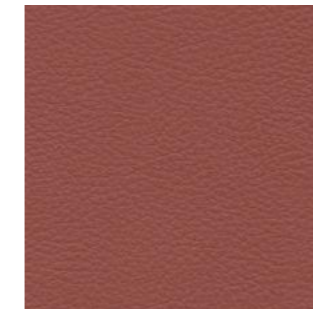
Vintage-418 细沙黄



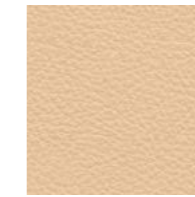
Vintage-416 午夜黑

## Standard Colours

25 Days



Milano Ruby 0906



Milano Natural 5196



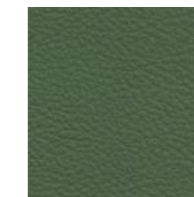
Milano Orange 5186



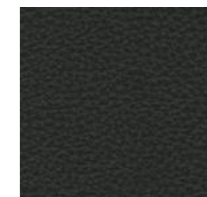
Milano Copper Brown 5188



Milano Iron Grey 5200



Milano Bottle Green 5231



Milano Black 2522

# MASTROTTO LINEA

L3

Composition Leather  
Origin Italy  
Thickness 0.9-1.1 mm  
Tear strength (single edge tear)  $\geq 20N$   
Colour fastness to rubbing (dry, 500 cycles)  $\geq 4$   
Colour fastness to rubbing (wet, 250 cycles)  $\geq 4$   
Colour fastness to rubbing (sweat, 80 cycles)  $\geq 4$

成分 牛皮  
产地 意大利  
厚度 0.9-1.1 mm  
单边撕裂强度  $\geq 20N$   
干摩擦色牢度 (500 次)  $\geq 4$   
湿摩擦色牢度 (250 次)  $\geq 4$   
汗摩擦色牢度 (80 次)  $\geq 4$

## Standard Colours

25 Days



Linea-649



Linea-660



Linea-646



Linea-622



**ADDRESS**  
Binjiang District  
BinAn rd. No.1181  
Hangzhou City  
Zhejiang Province, China

**CONTACT US**  
+86 400 166 8006  
[www.gradocontract.com](http://www.gradocontract.com)  
[info@gradocontract.com](mailto:info@gradocontract.com)

FOLLOW US



GRADO Website



@G-GRADO

@ GRADO 商业家具

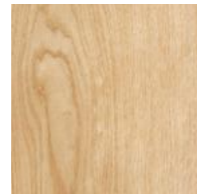
# WOOD



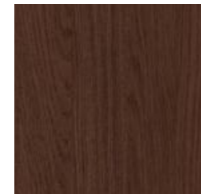
**ASH SOLID WOOD**  
白蜡木实木



Ash - Red  
白蜡木实木 - 红色



Ash - Natural Finish  
白蜡木实木 - 本色

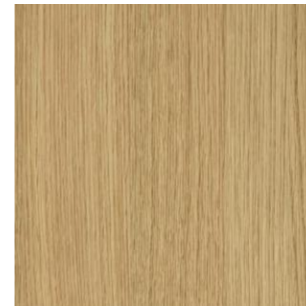


Ash - Brown  
白蜡木实木 - 咖色



Ash - Black  
白蜡木实木 - 黑色

**MDF - Plus VENEER**  
中纤板 - 实木木皮



MDF - Straight Grain Natural Oak  
中纤板 - 橡木直纹本色



MDF - Castello Oak  
中纤板 - 卡斯特橡木



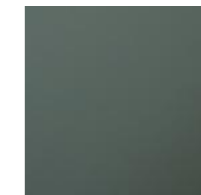
MDF - Crown Grain  
Natural Walnut  
中纤板 - 山纹胡桃木  
本色



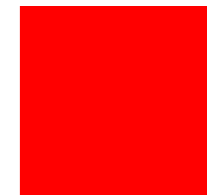
MDF - Gold Veined  
Walnut  
木皮饰面 - 金丝胡桃  
木



MDF - Celadon Grey  
中纤板 - 汉瓷灰



MDF - Sage Green  
中纤板 - 草绿



MDF - Tangerine  
Glaze  
中纤板 - 橙红色

**BEECH SOLID WOOD**  
榉木实木



Beech - Natural Finish  
榉木实木 - 原木色

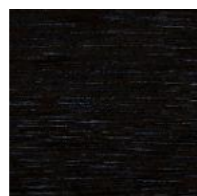


Beech - Brushed  
Black Finish  
榉木实木 - 黑色拉丝

**OAK SOLID WOOD**  
橡木实木



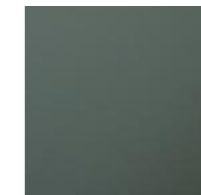
Oak - Natural Finish  
橡木实木 - 本色



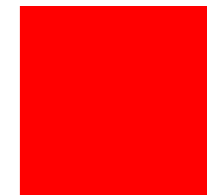
Oak - Black  
橡木实木 - 黑色



MDF - Matt White  
木皮饰面 - 哑光白色



MDF - Matt Black  
木皮饰面 - 哑光黑色



MDF - High Gloss  
Black  
中纤板 - 亮光黑色



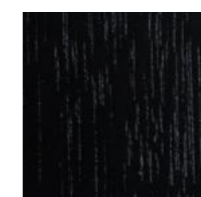
MDF - Matt White  
木皮饰面 - 哑光白色



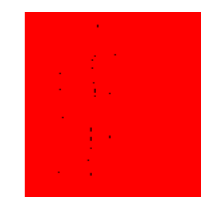
MDF - Matt Black  
木皮饰面 - 哑光黑色



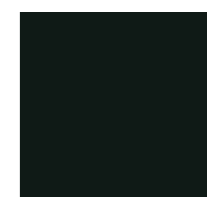
MDF - High Gloss  
Black  
中纤板 - 亮光黑色



MDF - Straight Grain  
Black Oak  
中纤板 - 橡木直纹黑  
色



MDF - Black Walnut  
中纤板 - 胡桃木黑色

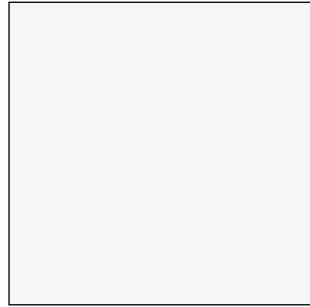


MDF - Silver Sheen  
Forest Green  
中纤板 - 墨绿闪银

\* 颜色以实物为准  
\* The actual product shall prevail.

\* 颜色以实物为准  
\* The actual product shall prevail.

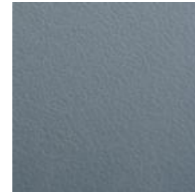
## MFC - FIRE RATED DECORATIVE PANEL 防火饰面板



MFC plus - Float White  
防火饰面板 - 浮白色



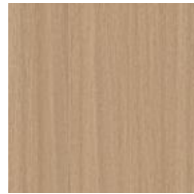
MFC plus - Iron Grey  
防火饰面板 - 铁灰色



MFC plus - Ashy  
Bean Green  
防火饰面板 - 灰豆绿



MFC plus - Black  
防火饰面板 - 黑色



MFC plus - Walnut  
防火饰面板 - 核桃木



MFC plus - New Oak  
防火饰面板 - 新橡木



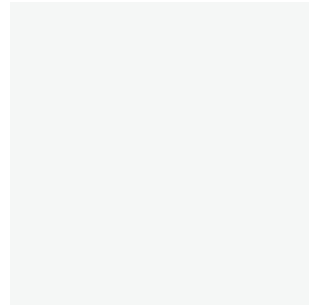
MFC plus - Light  
Wood Grain  
防火饰面板 - 浅木纹

# METAL

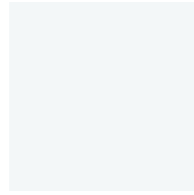


# METAL-POWDER COATING

## 金属 - 喷塑



Metal - White  
白色



Metal - Matte White  
Metal - 哑光白



Metal - Champagne  
Metal - 香槟色



Metal - Yellow  
Metal - 黄色



Metal - Matte Pink  
Metal - 哑光粉红



Metal - Orange-red  
Metal - 橙红



Metal - Green  
Metal - 绿色



Metal - Charcoal  
Gray  
Metal - 炭灰



Metal - Black  
Metal - 黑色

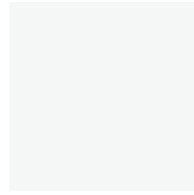
# PLASTIC



**POLYPROPYLENE**  
PP - 聚丙烯



PP - Black  
PP - 黑色



PP - White  
PP - 白色



PP - Yellow  
PP - 黄色



PP - Blue  
PP - 蓝色

# STONE



**MARBLE**  
大理石

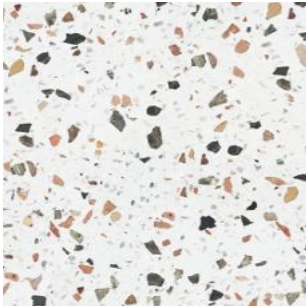


Nero Marquina  
黑白根



Volakas White  
爵士白

**TERRAZZO**  
水磨石



Yaki White  
雅琪白



**ADDRESS**  
Binjiang District  
BinAn rd. No.1181  
Hangzhou City  
Zhejiang Province, China

**CONTACT US**  
+86 400 166 8006  
[www.gradocontract.com](http://www.gradocontract.com)  
[info@gradocontract.com](mailto:info@gradocontract.com)

FOLLOW US



GRADO Website



@G-GRADO

@ GRADO 商业家具