

INCLASS



FINISHES BOOK

Fabrics / Leathers / Materials

2.1. UPHOLSTERY MATERIALS 1262

Matrix by collections _____	1294
G1 - Asis _____	1296
G2 - Netex _____	1298
G2 - Opal _____	1300
G2 - Nel _____	1302
G2 - Ars _____	1304
G2 - Pixel _____	1306
G2 - Cora _____	1308
G2 - Hilton _____	1310
G2 - Moe/Eren _____	1312
G3 - Apta _____	1314
G3 - Cura _____	1316
G3 - Iber _____	1318
G3 - Calma _____	1320
G3 - Rivet _____	1322
G3 - Era _____	1324
G3 - Medley _____	1326
G4 - Maxi _____	1328
G4 - Velvet mesh _____	1330
G4 - Fort FR _____	1332
G4 - Main Line Flax _____	1334
G4 - Connect _____	1336
G4 - Valencia _____	1338
G4 - Step _____	1340
G5 - Dolce _____	1342
G5 - Synergy _____	1344
G5 - Remix _____	1346
G5 - Canvas _____	1348
G6 - Steelcut Trio _____	1350
G6 - Fiord _____	1352
G7 - Hallingdal _____	1354
G10 - Piel _____	1356
G11 - Piel _____	1358

2.2. METAL PAINT & FINISHES 1332

Matrix by collections _____	1334
Sample card _____	1336

2.3. WOOD 1338

Matrix by collections _____	1340
Veneer / Solid wood _____	1342
Lacquered colours _____	1344

2.4. POLYPROPYLENE 1346

Matrix by collections _____	1348
PP1 colours for monoshells _____	1350
PP1 colours for bases _____	1352

2.5. ROTOMOLDED POLYETHYLENE 1354

Sample card _____	1356
-------------------	------

2.6. TABLE TOPS 1358

Matrix by collections _____	1360
Wood veneer tops _____	1362
Lacquered tops _____	1364
Miscellaneous materials _____	1366

UPHOLSTERY FABRICS & LEATHERS

All our upholstered products are locally handcrafted, making each piece unique.

The fabrics and leathers are priced by grades identified by an alpha numerical code: G1/G2/G3/G4/G5/G6/G7/G10/G11/G12

Upon approval, INCLASS products can be upholstered in customer's own fabrics (COM) or in customer's own leathers COL. Not all customer's materials are valid to upholster our products. They must be validated and approved by the INCLASS upholstery department.

- COM textiles will be priced as Grade 2.
- COL leathers will be priced as Grade 3.

All our fabrics and leathers may be purchased separately upon request. Consult our Customer Service for pricing.

The fabrics with stripes or patterns will be applied vertically unless customer specifies other way.

To guarantee a good finish, in some models, a backing must be added to some of the fabrics.

INCLASS offers a broad and selected range of upholsteries produced by top-level companies.

The maintenance, cleaning recommendations and technical data are the ones supplied by the producer for each collection.

Leather is a natural raw material with a non-uniform surface. The leather may show marks such as grain, wrinkles, veins and differences in colour or tone from one batch to another.

The samples in the finishes book are not to be considered a guarantee of perfect homogeneity between the sample and the real supply.

Items upholstered in light colours, especially white, make stains more visible and in many cases such as the dyes of garments impossible to remove. INCLASS shall not accept any liability for these kinds of stains.



UPHOLSTERY FABRICS & LEATHERS

COM/COL service

The Customer's Own Material (COM) and Customer's Own Leather (COL) services offers the opportunity for customers to have an INCLASS bespoke product with textiles or leathers especially selected by the customer.

Prior to order placement, if the COM/COL is not found in the INCLASS database of approved fabrics and leathers, a sample cutting of the required COM/COL must be submitted for approval.

If COM has stripes or patterns, the sample should be large enough to show the entire design of the fabric. Customer must identify the name and number of units on which the COM/ COL is to be applied.

Once approved, you can place your order. As soon as we receive and check COM/COL in our factory, our customer service will inform you about the production and delivery schedule.

Even after preliminary approval, INCLASS reserves the right to reject COM/COL if necessary when the quality is not satisfactory for the item it is intended to be used on. Even after preliminary approval, INCLASS assumes no responsibility for its overall appearance, durability or any other quality aspect, after being upholstered on our products. Subject to a specific agreements, INCLASS may buy for the customer the COM/COL materials.

COM/COL requirements

Each COM/COL must be identified as follows to prevent order delays or material losses:

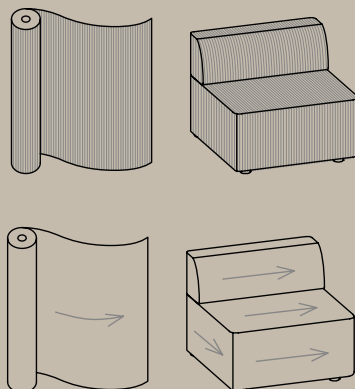
- Customer name and purchase order number.
- Clearly indicate the item to which COM/COL is to be applied
- The name of the fabric supplier. Supplier's fabric name with number and colour.

The COM requirements are based on 1,4 meter width plain material. In some models, the quantity of material needed can be optimized by increasing the units ordered. For this reason, our product sheets indicate the quantities required for orders from 1 to 7 units and for orders of more than 8 units. If you need a more accurate calculation, contact our Customer Service. If the fabric has a design that requires specific positioning or pattern matching, our Customer Service should be consulted for additional material requirement. On these type of fabrics an upcharge will be applied.

COL hides must be sent well packed and rolled in a neat manner avoiding creases and roll marks. The leathers can be rejected if are sent in a folded manner.

To determine COL quantity, see COL requirements for each product. Leather is a natural product with a non-uniform surface due to grain, wrinkles, veins and may present differences in tone from one batch to another. For this reason all square meter requirements are estimations. (COL) Square meter requirements are based on hides with an average size of 4-5 m² of clean usable leather. If the COL has a smaller average hide size, please consult our Customer Service. The usable surface and the shape of the COL hides supplied can make it necessary for us to request more leather after COL is received.

Excess COM/COL will not be returned with the shipment of furniture and will be disposed of after order is completed unless prior arrangements have been made with our Customer Service.



Cutting Direction Guidelines

Cutting direction is based on the fabric width and the way the fabric is cut from the roll and applied to products. The INCLASS Upholstered products usually use the vertical direction. The vertical direction is understood as the direction of the unrolling, leaving the selvages on the right and left sides. The fabric is applied as shown in the illustration.

UPHOLSTERY MATRIX BY COLLECTIONS

	ALTEA	AMBER	ANN	ARC	ARUM	ARYN	ARYN MAX	ARYN WOOD	BINAR 55	BINAR 60	BINAR EXECUTIVE	DUNAS LOUNGE	DUNAS XL	DUNAS XS	ENTROPY	ESCALAS	ESITT	EXA	ITEK PRO	KERN
FABRICS & LEATHERS																				
G1 - Asis	•	•	•	•	•	•	•	•	•	•	•	•	•	•	-	•	•	•	•	•
G2 - Netex	-	-	-	-	-	-	-	-	-	-	-	-	-	-	-	-	•	•	•	-
G2 - Opal	•	•	•	•	•	•	•	•	•	•	•	•	•	•	•	•	•	•	•	•
G2 - Nel	•	•	•	•	•	•	•	•	•	•	•	•	•	•	•	•	•	•	•	•
G2 - Ars	•	•	•	•	•	•	•	•	•	•	•	•	•	•	•	•	•	•	•	•
G2 - Pixel	•	•	•	•	•	•	•	•	•	•	•	•	•	•	•	•	•	•	•	•
G2 - Cora	•	•	•	•	•	•	•	•	•	•	•	•	•	•	•	•	•	•	•	•
G2 - Hilton	•	•	•	•	•	•	•	•	•	•	•	•	•	•	•	•	•	•	•	•
G2 - Moe / Eren	•	•	•	•	•	•	•	•	•	•	•	•	•	•	•	•	•	•	•	•
G3 - Apta	•	•	•	•	•	•	•	•	•	•	•	•	•	•	•	•	•	•	•	•
G3 - Cura	•	•	•	•	•	•	•	•	•	•	•	•	•	•	•	•	•	•	•	•
G3 - Iber	•	•	•	•	•	•	•	•	•	•	•	•	•	•	•	•	•	•	•	•
G3 - Calma	•	•	•	•	•	•	•	•	•	•	•	•	•	•	•	•	•	•	•	•
G3 - Rivet	•	•	•	•	•	•	•	•	•	•	•	•	•	•	•	•	•	•	•	•
G3 - Era	•	•	•	•	•	•	•	•	•	•	•	•	•	•	•	•	•	•	•	•
G3 - Medley	•	•	•	•	•	•	•	•	•	•	•	•	•	•	•	•	•	•	•	•
G4 - Maxi	-	-	-	-	-	-	-	-	-	-	-	-	-	-	-	-	•	-	-	-
G4 - Velvet Mesh	-	-	-	-	-	-	-	-	-	-	-	-	-	-	-	-	•	•	•	-
G4 - Fort FR	•	•	•	•	•	•	•	•	•	•	•	•	•	•	•	•	•	•	•	•
G4 - Main Line Flax	•	•	•	•	•	•	•	•	•	•	•	•	•	•	•	•	•	•	•	•
G4 - Connect	•	•	•	•	•	•	•	•	•	•	•	•	•	•	•	•	•	•	•	•
G4 - Valencia	•	•	•	•	•	•	•	•	•	•	•	•	•	•	•	•	•	•	•	•
G4 - Step	•	•	•	•	•	•	•	•	•	•	•	•	•	•	•	•	•	•	•	•
G5 - Dolce	•	•	•	•	•	•	•	•	•	•	•	•	•	•	•	•	•	•	•	•
G5 - Synergy	•	•	•	•	•	•	•	•	•	•	•	•	•	•	•	•	•	•	•	•
G5 - Remix	•	•	•	•	•	•	•	•	•	•	•	•	•	•	•	•	•	•	•	•
G5 - Canvas	•	•	•	•	•	•	•	•	•	•	•	•	•	•	•	•	•	•	•	•
G6 - SteelCut Trio	•	•	•	•	•	•	•	•	•	•	•	•	•	•	•	•	•	•	•	•
G6 - Fiord	•	•	•	•	•	•	•	•	•	•	•	•	•	•	•	•	•	•	•	•
G7 - Hallingdal	•	•	•	•	•	•	•	•	•	•	•	•	•	•	•	•	•	•	•	•
G10 - Piel	•	•	•	•	•	•	•	•	•	•	•	•	•	•	○	○	•	•	•	○
G11 - Piel	•	•	•	•	•	•	•	•	•	•	•	•	•	•	○	○	•	•	•	○

LEGEND

- Not available
- Available
- See specifications

KORI	LAPSE	LEA	LIN TAPIZ	LIN WOOD	MARCUS	NIM	ONDES	ONEM	ORUS	OSWELL	PAU	PLANIA BENCH	REVER	TAJA	TAO	TETRIS	UNNIA	UNNIA TAPIZ	VARYA	VARYA TAPIZ	VARYA WOOD	VARYA XL	WABAO	WUDI	XAIL	ZENPRO
●	●	●	●	●	●	●	●	●	●	●	●	●	●	●	●	●	●	●	●	●	●	●	●	●	●	●
●	●	●	●	●	●	●	●	●	●	●	●	●	●	●	●	●	●	●	●	●	●	●	●	●	●	●
●	●	●	●	●	●	●	●	●	●	●	●	●	●	●	●	●	●	●	●	●	●	●	●	●	●	●
●	●	●	●	●	●	●	●	●	●	●	●	●	●	●	●	●	●	●	●	●	●	●	●	●	●	●
●	●	●	●	●	●	●	●	●	●	●	●	●	●	●	●	●	●	●	●	●	●	●	●	●	●	●
●	●	●	●	●	●	●	●	●	●	●	●	●	●	●	●	●	●	●	●	●	●	●	●	●	●	●
●	●	●	●	●	●	●	●	●	●	●	●	●	●	●	●	●	●	●	●	●	●	●	●	●	●	●
●	●	●	●	●	●	●	●	●	●	●	●	●	●	●	●	●	●	●	●	●	●	●	●	●	●	●
●	●	●	●	●	●	●	●	●	●	●	●	●	●	●	●	●	●	●	●	●	●	●	●	●	●	●
●	●	●	●	●	●	●	●	●	●	●	●	●	●	●	●	●	●	●	●	●	●	●	●	●	●	●
●	●	●	●	●	●	●	●	●	●	●	●	●	●	●	●	●	●	●	●	●	●	●	●	●	●	●
●	●	●	●	●	●	●	●	●	●	●	●	●	●	●	●	●	●	●	●	●	●	●	●	●	●	●
●	●	●	●	●	●	●	●	●	●	●	●	●	●	●	●	●	●	●	●	●	●	●	●	●	●	●
●	●	●	●	●	●	●	●	●	●	●	●	●	●	●	●	●	●	●	●	●	●	●	●	●	●	●
●	●	●	●	●	●	●	●	●	●	●	●	●	●	●	●	●	●	●	●	●	●	●	●	●	●	●
●	●	●	●	●	●	●	●	●	●	●	●	●	●	●	●	●	●	●	●	●	●	●	●	●	●	●
●	●	●	●	●	●	●	●	●	●	●	●	●	●	●	●	●	●	●	●	●	●	●	●	●	●	●
●	●	●	●	●	●	●	●	●	●	●	●	●	●	●	●	●	●	●	●	●	●	●	●	●	●	●
●	●	●	●	●	●	●	●	●	●	●	●	●	●	●	●	●	●	●	●	●	●	●	●	●	●	●
●	●	●	●	●	●	●	●	●	●	●	●	●	●	●	●	●	●	●	●	●	●	●	●	●	●	●
●	●	●	●	●	●	●	●	●	●	●	○	●	●	●	●	○	●	●	●	●	●	●	●	●	●	●
●	●	●	●	●	●	●	●	●	●	●	○	●	●	●	●	○	●	●	●	●	●	●	●	●	●	●

G1 - ASIS

TECHNICAL DATA

Composition:

100% polyester.

Light fastness:

5 - 6, ISO 105 B02, Method 2.

Abrasion:

100.000 Martindale EN ISO 12947-2.

Resistance to pilling:

4 - 5, ISO 12945-2.

Rubbing fastness in humid state:

4, ISO 105-X12.

Rubbing solvents:

4, ISO 105-X12.

Tear strength:

Warp 140N.

Weft 110N, EN ISO 13937-3.

Flammability:

EN 1021 - 1/2.

BS 5852 0.

BS 7176 Low Hazard.

CAL TB 117 Section 1.

NFPA 260 Class 1.

Regulation n° 118 UNECE Annexed 6.

IMO MSC.307 (88) Annexed I Part 8.

Width: 140cm

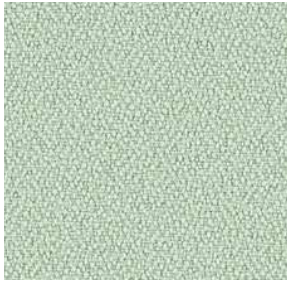
Weight: 335gr/m²



***Batch to batch variations may occur within commercial tolerances.

Note:

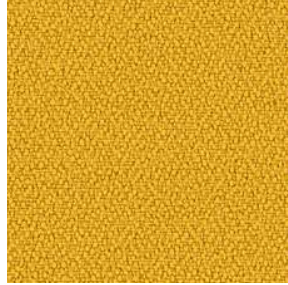
- The real colours and tones of the fabrics may differ from the digital image due to the scan process and the colour calibration of the different screens. Always request real fabric samples before ordering.
- Consult our Fabric and Leather Matrix to know about the availability of this material by product line.



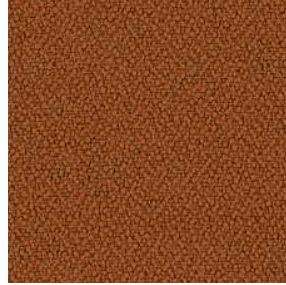
198



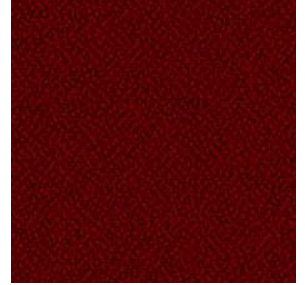
315



88



122



4011



422



77



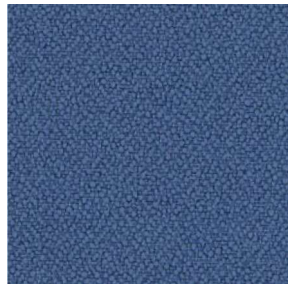
47



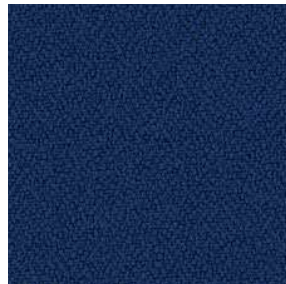
292



86



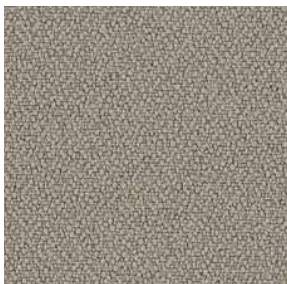
4



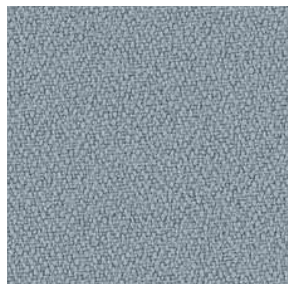
5



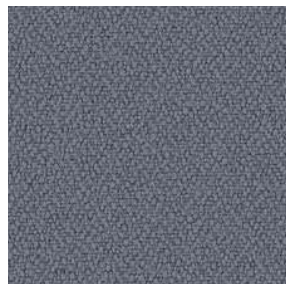
26



132



170



108



9

INCLASS

G2 - OPAL ^{NEW}

TECHNICAL DATA

Composition:

100% PL.

Lightfastness:

≥5, ISO 105 B12.

Abrasion:

>100.000 Martindale ISO 12947-2.

Resistance to pilling:

4, ISO 12945-1.

Fastness to rubbing:

Wet 5.

Dry 5, ISO 105-X12.

Seam strength:

Warp 3,4mm.

Weft 1,6mm. ISO 13936-2.

Tear strength:

Warp 150,4N.

Weft 271,6N, EN ISO 13937-3.

Tensile strength:

Warp 1855N.

Weft 619N, EN ISO 13934-1.

Flammability:

EN 1021 - 1 (cigarette).

BS 5852 Ignition source 1.

Environment:

Oeko-Tex® standard 100.

Width: ±140cm

Weight: ±540gr/m²



***Batch to batch variations may occur within commercial tolerances.



STANDARD
100

Note:

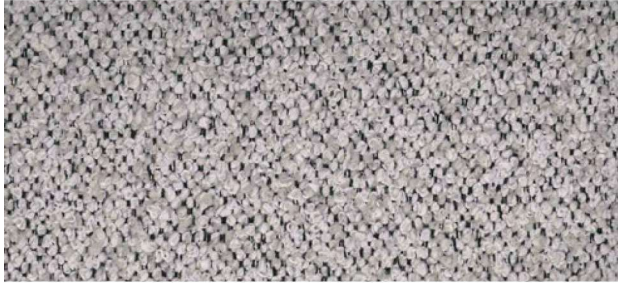
- The real colours and tones of the fabrics may differ from the digital image due to the scan process and the colour calibration of the different screens. Always request real fabric samples before ordering.
- Consult our Fabric and Leather Matrix to know about the availability of this material by product line.



01



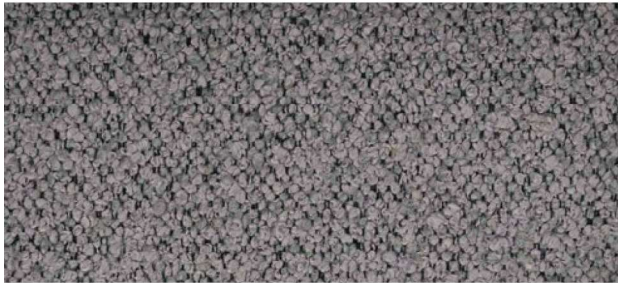
08



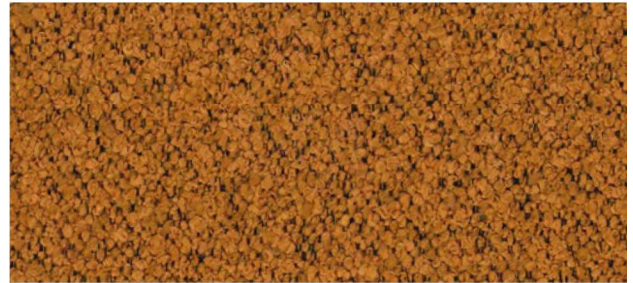
17



06



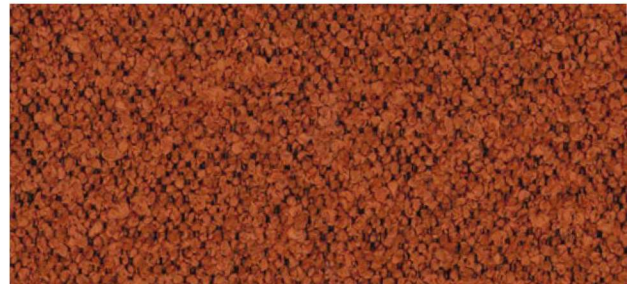
18



11



12



10



15



09

INCLASS

G2 - NETEX

3D MESH

TECHNICAL DATA

Composition:

PES 100%.

Lightfastness:

4 - 5, ISO 105-B02.

Abrasion:

45.000 Martindale, EN ISO 12947-2.

Breaking strength:

Wrap N 620.

Weft N 1.200, EN ISO 13934-1.

Resistance to pilling:

5, EN ISO 12945-2.

Colour fastness to perspiration:

Acid 5

Alkaline 5, UNE-EN ISO 105-E04.

Flammability:

CAL TB 117

EN ISO 10211 Cigarette.

Width: ±160cm

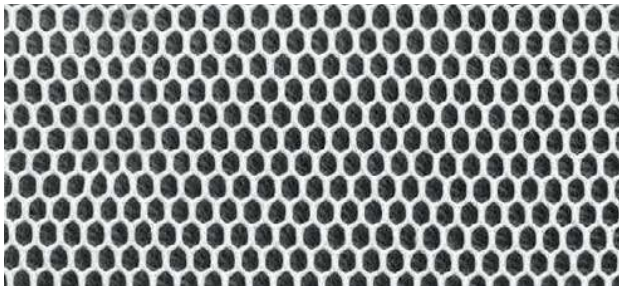
Weight: ±300gr/m²



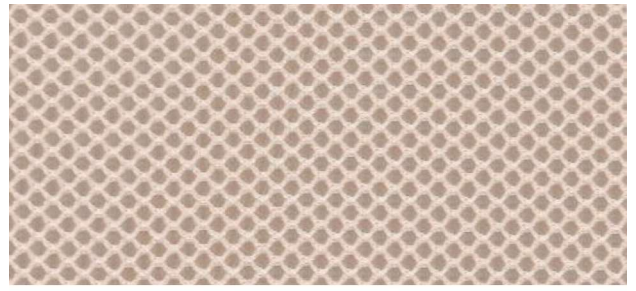
***Batch to batch variations may occur within commercial tolerances.

Note:

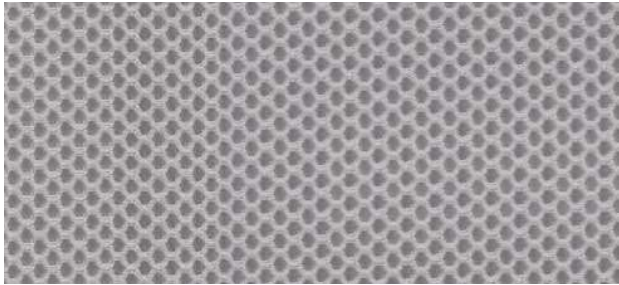
- The real colours and tones of the fabrics may differ from the digital image due to the scan process and the colour calibration of the different screens. Always request real fabric samples before ordering.
- Consult our Fabric and Leather Matrix to know about the availability of this material by product line.



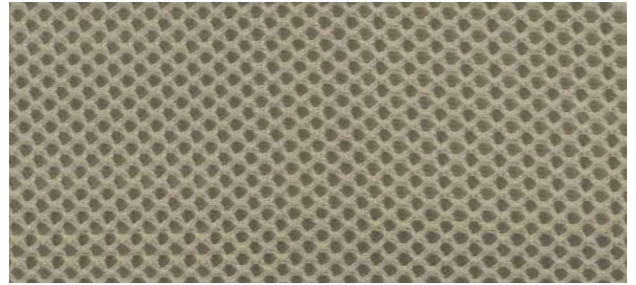
201



213



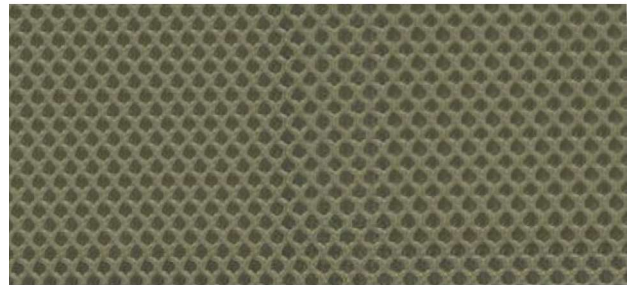
227



210



231



263



234



242



212



211

INCLASS

G2 - NEL

TECHNICAL DATA

Composition:

95% PES, 5% cotton.

Light fastness:

5 - 6, UNE 40187 - BS1006-B2.

Abrasion:

>38.000 Martindale EN ISO 12947-2.

Resistance to pilling:

4 - 5, ISO 12945-1.

Rubbing fastness in humid state:

4 - 5, ISO 105-D01.

Rubbing solvents:

4 - 5, ISO 105-D01.

Tear strength:

Warp 2mm.

Wet 2,1mm, EN ISO 13937-2.

Characteristics:

Instalimp® treatment.

Width: ±140cm

Weight: ±445gr/m²

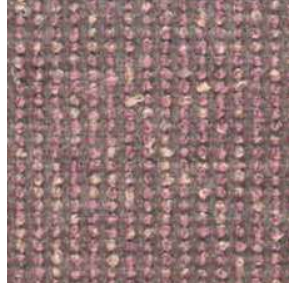


***Batch to batch variations may occur within commercial tolerances.

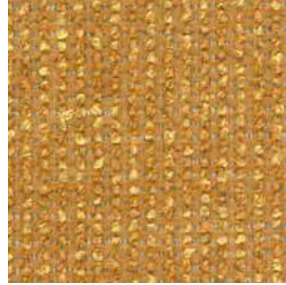


Note:

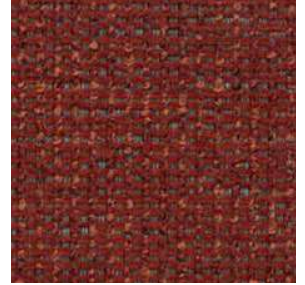
- The real colours and tones of the fabrics may differ from the digital image due to the scan process and the colour calibration of the different screens. Always request real fabric samples before ordering.
- Consult our Fabric and Leather Matrix to know about the availability of this material by product line.



21



10



12



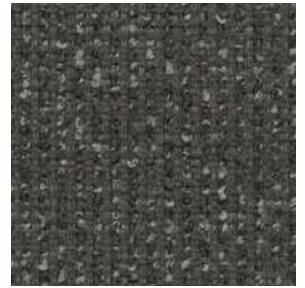
15



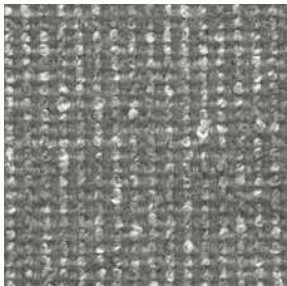
1



3



50



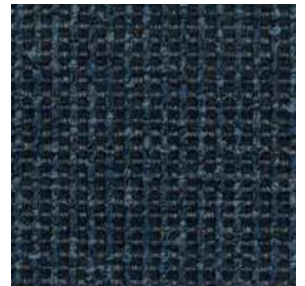
6



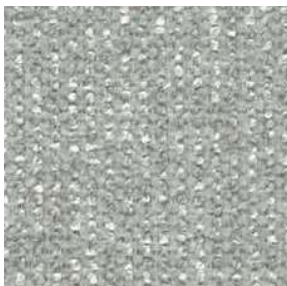
80



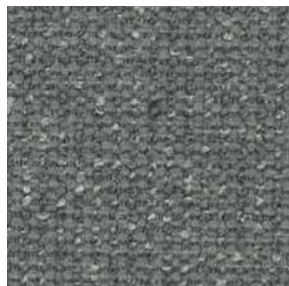
7



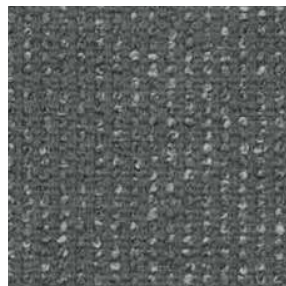
70



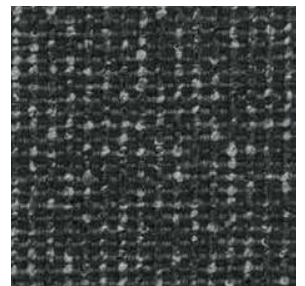
9



19



29



90

INCLASS

G2 - ARS

TECHNICAL DATA

Composition:

100% PES.

Light fastness:

5, ISO 105 B02, Method 2.

Abrasion:

>300.000 Martindale EN ISO 12947-2.

Resistance to pilling:

4, ISO 12945-2.

Fastness to rubbing:

Wet 4 - 5. Dry 4 - 5, EN ISO 105x12.

Seam strength:

Warp 3,6mm.

Weft 4,0mm, EN ISO 13936-2.

Seam strength:

Warp 101 - 112N.

Weft 79 - 89N, EN ISO 13937-3.

Flammability:

EN 1021 - 1 (cigarette).

CAL TB 117.

Environment:

OEKO-TEX® Standard 100.

Width: 140cm

Weight: 240gr/m²



***Batch to batch variations may occur within commercial tolerances.

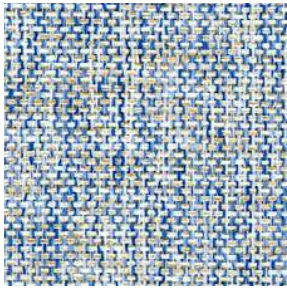


Note:

- The real colours and tones of the fabrics may differ from the digital image due to the scan process and the colour calibration of the different screens. Always request real fabric samples before ordering.
- Consult our Fabric and Leather Matrix to know about the availability of this material by product line.



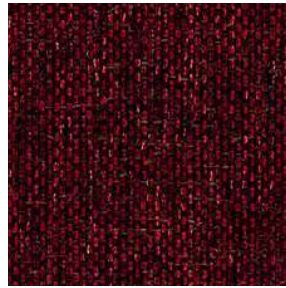
90



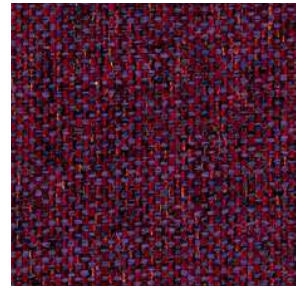
74



27



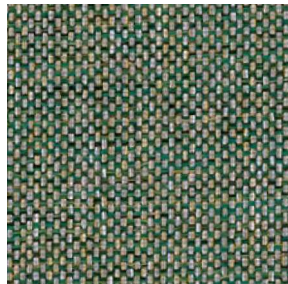
59



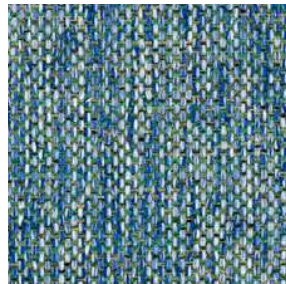
68



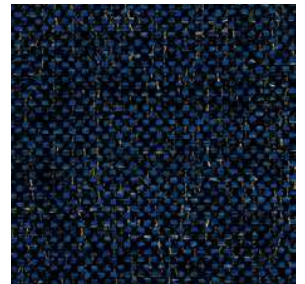
45



35



75



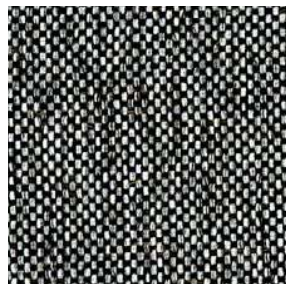
79



87



88



98



99

G2 - PIXEL

TECHNICAL DATA

Composition:

100% polyolefin.

Light fastness:

5 - 6, UNE-EN ISO 105-B02. Method 2.

Abrasion:

40.000 Martindale EN ISO 12947-2.

Resistance to pilling:

4 - 5, UNE-EN 12945-2.

Dye fastness to rubbing:

Wet 4 - 5.

Dry 4 - 5, UNE-EN ISO 105-X12.

Tear Resistance:

Warp 120N.

Weft 130N UNE-EN ISO 13937-3.

Flammability:

EN 1021-1 (cigarette)

BS 5852-0 (cigarette)

CAL TB 117 Section 1.

NFPA 260 Clase 1.

Environment:

OEKO-TEX® Standard 100.

Width: 140cm

Weight: 255gr/m²



***Batch to batch variations may occur within commercial tolerances.



Note:

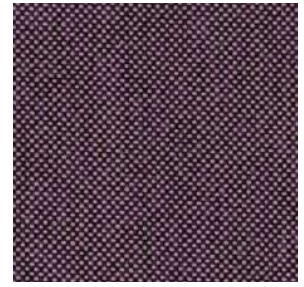
- The real colours and tones of the fabrics may differ from the digital image due to the scan process and the colour calibration of the different screens. Always request real fabric samples before ordering.
- Consult our Fabric and Leather Matrix to know about the availability of this material by product line.



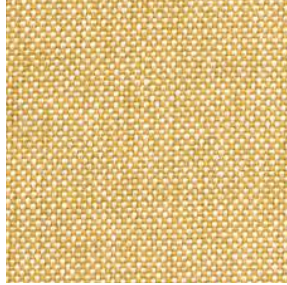
12



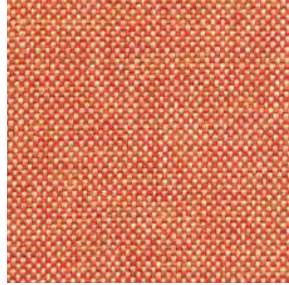
3



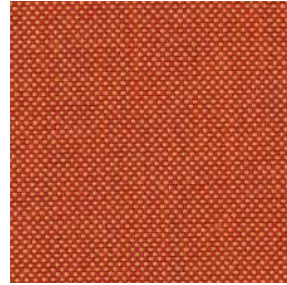
90



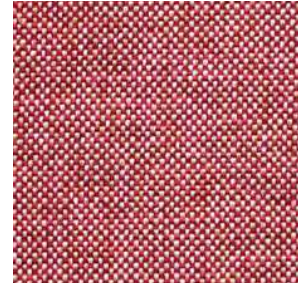
50



53



62



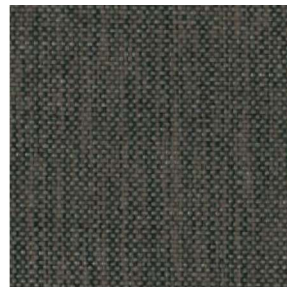
54



101



102



41



43



84



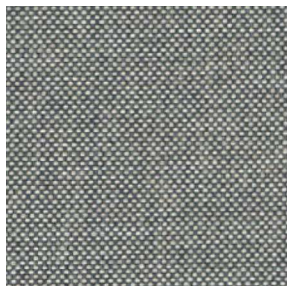
71



78



247



19



21



29



801

INCLASS

G2 - CORA

TECHNICAL DATA

Composition:

100% polyester.

Light fastness:

5 EN ISO 105-B02, Method 2.

Abrasion:

83.000 Martindale EN ISO 12947-1, 2.

Resistance to pilling:

4, EN ISO 12945-2.

Rubbing fastness in humid state:

5, ISO 105-X12.

Rubbing solvents:

5, ISO 105-X12.

Seam strength:

Warp 2,5mm.

Weft 3,7mm, ISO 13936-2.

Tear strength:

Warp exceed 154,2N.

Weft exceed 112,3N, EN ISO 13937-3.

Width: 140cm

Weight: 330gr/m²



***Batch to batch variations may occur within commercial tolerances.



Note:

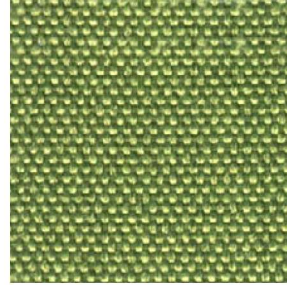
- The real colours and tones of the fabrics may differ from the digital image due to the scan process and the colour calibration of the different screens. Always request real fabric samples before ordering.
- Consult our Fabric and Leather Matrix to know about the availability of this material by product line.



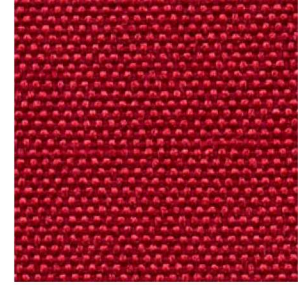
21



40



32



60



12



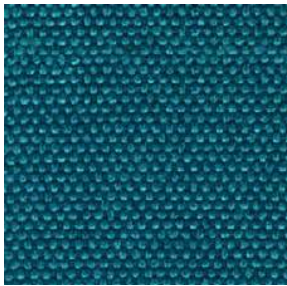
14



115



27



17



18



37



38



3



65



20



2

G2 - CORA

INCLASS

G2 - HILTON

TECHNICAL DATA

Composition:

100% polyester.

Light fastness:

4, ISO 105 B02.

Abrasion:

>25.000 Martindale ISO 12947-2.

Resistance to pilling:

4 - 5, ISO 12945-2.

Tear strength:

Warp 63N.

Weft 63N, ISO13937-3.

Dye fastness to rubbing:

Wet 4 - 5. Dry 4 - 5, ISO 105X12.

Width: 140cm

Weight: 380gr/m²



***Batch to batch variations may occur within commercial tolerances.



Note:

- The real colours and tones of the fabrics may differ from the digital image due to the scan process and the colour calibration of the different screens. Always request real fabric samples before ordering.
- Consult our Fabric and Leather Matrix to know about the availability of this material by product line.



6



4



2



18



8



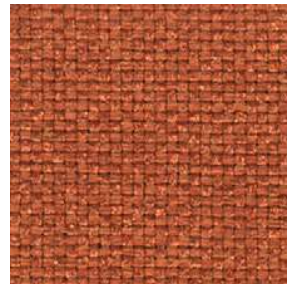
9



17



10



11



12



16



13



14



1

G3 - MOE/EREN ^{NEW}

MOE TECHNICAL DATA

Composition:

PES 100%.

Lightfastness:

5, ISO 105-B02.

Abrasion:

>100.000 Martindale ISO 12947-2.

Resistance to pilling:

4 - 5, ISO 12945-1.

Fastness to rubbing:

4 - 5, ISO 105-X12.

Seam strength:

Warp 492N.

Weft 492N, ISO 13935-2.

Seam splingge:

Warp 4mm.

Weft 4mm, ISO 13936-2.

Tear strength:

Warp 32N.

Weft 32N, ISO 13937-3.

Breaking resistance:

Warp 1434N.

Weft 907N, ISO 13934-1.

Rubbing solvents:

4 - 5, ISO 105-D01.

Snagging resistance:

4, BS 8479.

Flammability:

EN 1021 - 1 (cigarette)

BS 5852 Ignition source 1.

Widht: ±140cm

Weight: ±530gr/m²

EREN TECHNICAL DATA

Composition:

PES 100%.

Lightfastness:

5, ISO 105-B02.

Abrasion:

>100.000 Martindale ISO 12947-2.

Resistance to pilling:

4, ISO 12945-2.

Fastness to rubbing:

Wet 5.

Dry 5, ISO 105-X12.

Seam splingge:

Warp 1,4mm.

Weft 2,2mm, ISO 13936-2.

Tear strength:

Warp 1434N.

Weft 263,3N, ISO 13937-3.

Tensile strength:

Warp 1229N.

Weft 699N, ISO 13934-1.

Flammability:

EN 1021 - 1 (cigarette).

BS 5852 Ignition source 1.

Widht: ±140cm

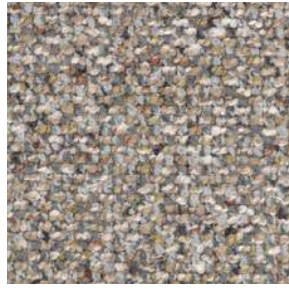
Weight: ±540gr/m²



***Batch to batch variations may occur within commercial tolerances.

Note:

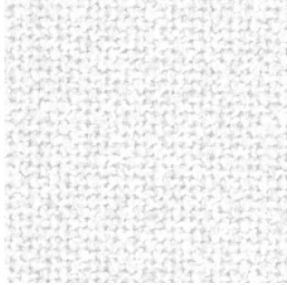
- The real colours and tones of the fabrics may differ from the digital image due to the scan process and the colour calibration of the different screens. Always request real fabric samples before ordering.
- Consult our Fabric and Leather Matrix to know about the availability of this material by product line.



EREN 05



MOE 14



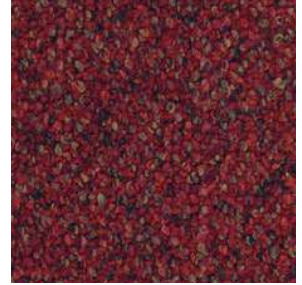
MOE 05



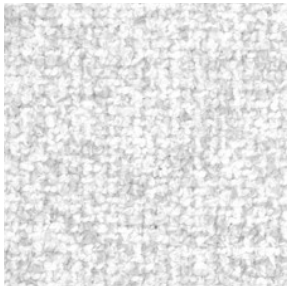
EREN 03



EREN 06



MOE 12



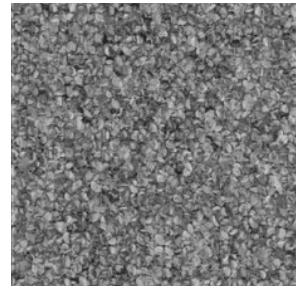
EREN 01



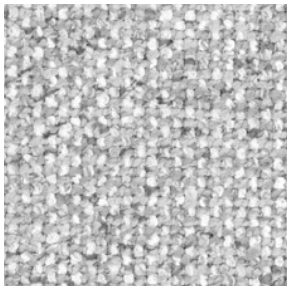
MOE 10



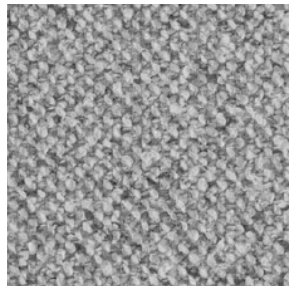
MOE 11



MOE 09



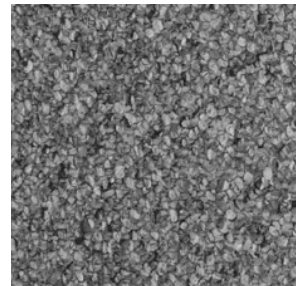
EREN 14



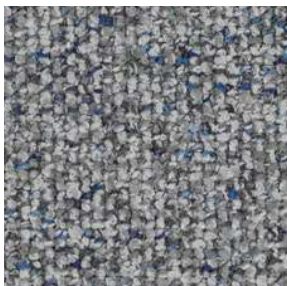
MOE 08



EREN 13



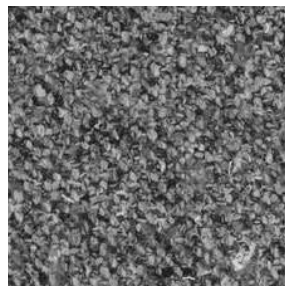
MOE 03



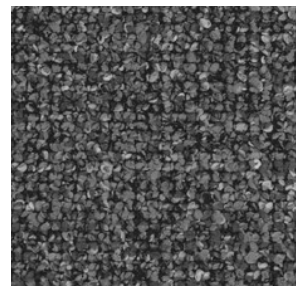
EREN 15



MOE 13



MOE 01



EREN 16

G3 - MOE/EREN

G3 - APTA

TECHNICAL DATA

Composition:

71% polyester, 18% modacrylic, 8% recycled cotton, 3% polyamide.

Light fastness:

4 - 5, ISO 105 B02.

Abrasion:

60.000 Martindale ISO 12947.

Resistance to pilling:

5, ISO 12945-2.

Fastness to rubbing:

4 - 5, ISO 105-X12.

Tensile strength:

>350N, ISO 13934-1.

Tear strength:

>20N, BS 4303.

>3N, DIN 53859-5.

Flammability:

EN 1021 - 1 (cigarette).

EN 1021 - 2 (match).

BS 5852 (cigarette).

Environment:

Oeko-Tex® standard 100.

Characteristics:

Anti-stain protection.

Antibacterial and virus protection protection.

Width: ±140cm

Weight:



***Batch to batch variations may occur within commercial tolerances.



8%
recycled material
Recycled
Cotton

Note:

- The real colours and tones of the fabrics may differ from the digital image due to the scan process and the colour calibration of the different screens. Always request real fabric samples before ordering.
- Consult our Fabric and Leather Matrix to know about the availability of this material by product line.



62



625



156



266



618



324



80



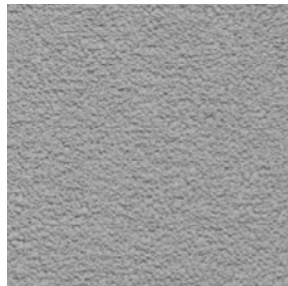
111



43



336



13



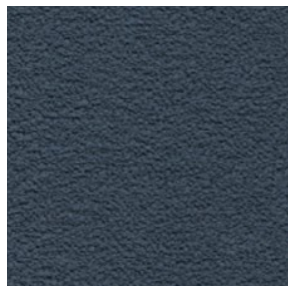
271



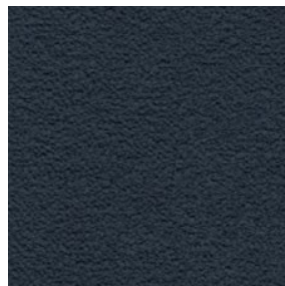
339



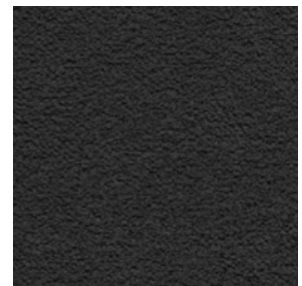
602



11



60



15

G3 - CURA

By Gabriel

TECHNICAL DATA

Composition:

100% poliéster reciclado.

Lightfastness:

5 - 8, EN ISO 105 B02.

Abrasion:

100.000 Martindale EN ISO 12947-2.

Resistance to pilling:

4 - 5, EN ISO 12945-2.

Fastness to rubbing:

Wet 4 - 5.

Dry 4 - 5, ISO 105-X12.

Flammability:

EN 1021 - 1 (cigarette).

EN 1021 - 2 (match).

BS EN 1021-1 (cigarette).

Class Uno UNI 9175 Class 1 EMME.

CA TB 117-2013.

ASTM E 84 Class 1 (Adhered).

Environment:

Oeko-Tex® standard 100.

Certificado con EU Ecolabel.

Ansi/Bifma VOC test M7.1.

Environmental Product Declaration (EPD)

Width: ±140cm

Weight: ±420gr/m²



40° shrinkage max. 1%

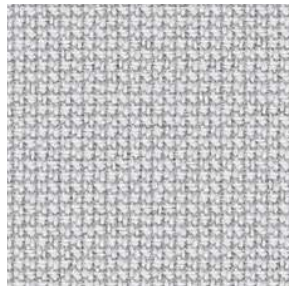
***Batch to batch variations may occur within commercial tolerances.



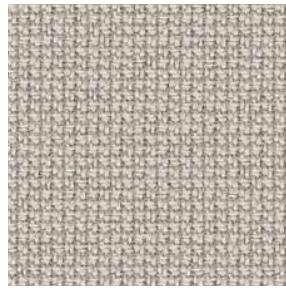
100%
recycled material
Post Consumer
Recycled Polyester

Note:

- The real colours and tones of the fabrics may differ from the digital image due to the scan process and the colour calibration of the different screens. Always request real fabric samples before ordering.
- Consult our Fabric and Leather Matrix to know about the availability of this material by product line.



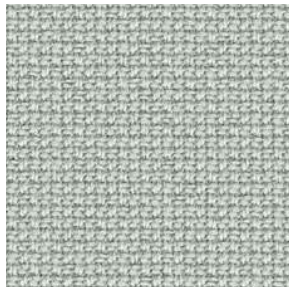
60000



61232



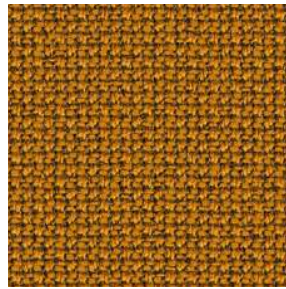
61168



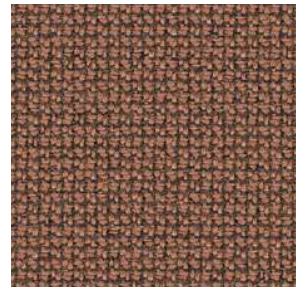
68262



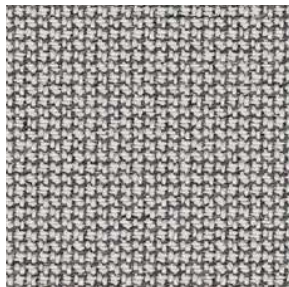
68181



62082



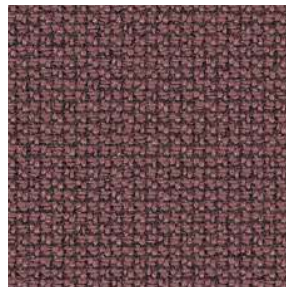
61257



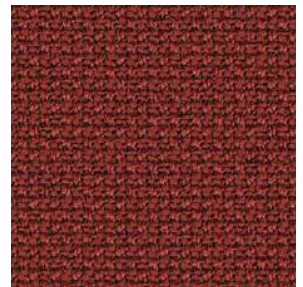
60112



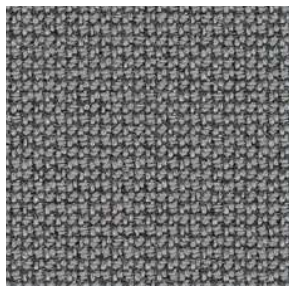
68261



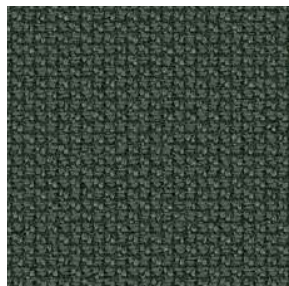
64195



64196



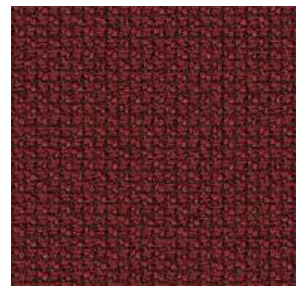
60110



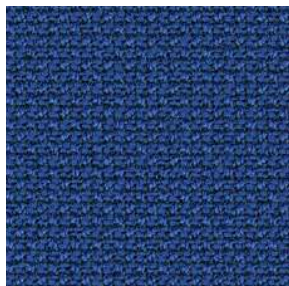
68182



61169



64252



65105



66170



66166



60999

G3 - IBER

TECHNICAL DATA

Composition:

69% PES, 30% cotton, 1% polyamide.

Light fastness:

4 - 5, ISO 105 B02.

Abrasion:

70.000 Martindale ISO 12947 - BS 2543.

Resistance to pilling:

4 - 5, ISO 12945-2.

Fastness to rubbing:

Wet 4 - 5.

Dry 4.

Seam splingge:

Warp <3mm.

Weft <4mm.

Flammability:

BS 5852 Part 1.

Environment:

Oeko-Tex® standard 100.

Width: ±140cm

Weight: ±570gr/m²



***Batch to batch variations may occur within commercial tolerances.



70%
recycled material
Recycled
Cotton



Note:

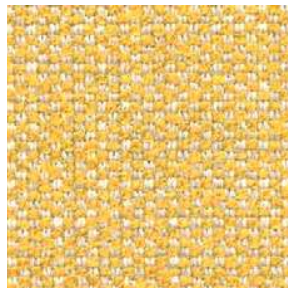
- The real colours and tones of the fabrics may differ from the digital image due to the scan process and the colour calibration of the different screens. Always request real fabric samples before ordering.
- Consult our Fabric and Leather Matrix to know about the availability of this material by product line.



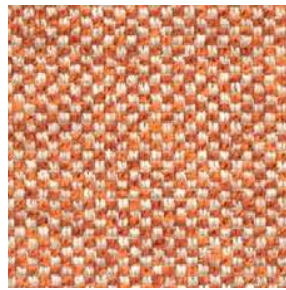
01



09



10



14



18



19



04



55



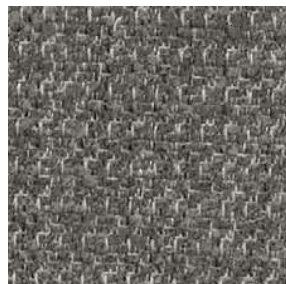
38



07



37



91



90

INCLASS

G3 - CALMA

TECHNICAL DATA

Composition:

Topcoat: 70% Vinyl, 30% PU.

Backing: 100% Microfiber Polyester.

Light fastness:

>4.

Abrasion:

>100.000 Martindale.

Breaking strength:

Warp >180N.

Weft >330N, ISO 1421.

Tear strength:

Warp >25N/cm.

Weft >28N/cm, ISO 4674-1.

Flex Bally:

>100.000 cycles.

Width: 140cm.

Weight: 853gr/m².



***Batch to batch variations may occur within commercial tolerances.

Note:

- The real colours and tones of the fabrics may differ from the digital image due to the scan process and the colour calibration of the different screens. Always request real fabric samples before ordering.
- Consult our Fabric and Leather Matrix to know about the availability of this material by product line.



407



415



425



477



412



411



421



401



418



419



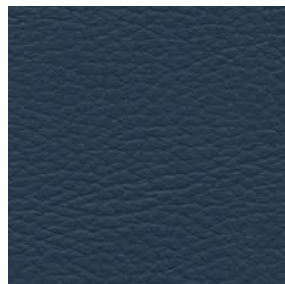
423



470



475



469



490

G3 - CALMA

INCLASS

G3 - RIVET

By Camira

TECHNICAL DATA

Composition:

100% REPREVE® recycled polyester.

Light fastness:

6, EN ISO 105-B02, Method 3.

Abrasion:

≥80.000 Martindale EN ISO 12947-2.

Fastness to rubbing:

Wet 4.

Dry 4, ISO 105 X12.

Flammability:

EN 1021 - 1 (cigarette).

EN 1021 - 2 (match).

BS 7176 Low Hazard.

UNI 9175 Class 1 IM.

Environment:

Complies with EU Ecolabel.

Certificate Indoor Advantage™ Gold.

Width: 140cm

Weight: 280gr/m²



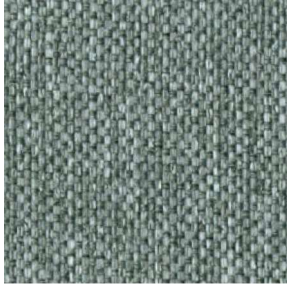
***Batch to batch variations may occur within commercial tolerances.



100%
recycled material
Post Consumer
Recycled
Polyester

Note:

- The real colours and tones of the fabrics may differ from the digital image due to the scan process and the colour calibration of the different screens. Always request real fabric samples before ordering.
- Consult our Fabric and Leather Matrix to know about the availability of this material by product line.



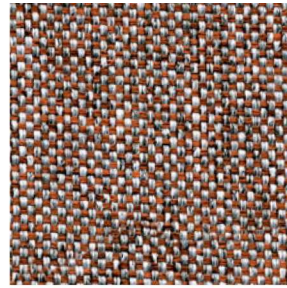
26



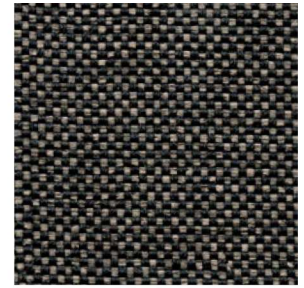
10



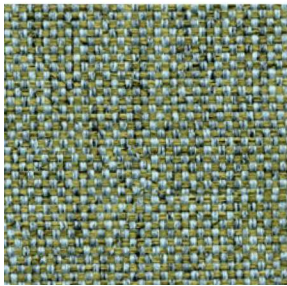
14



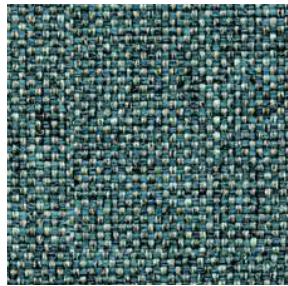
09



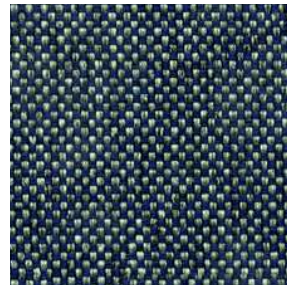
36



11



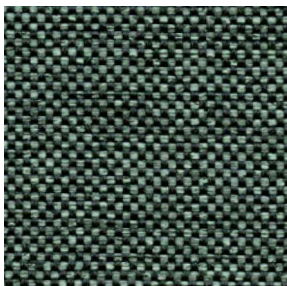
21



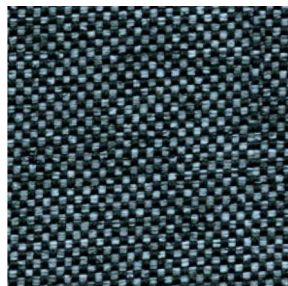
27



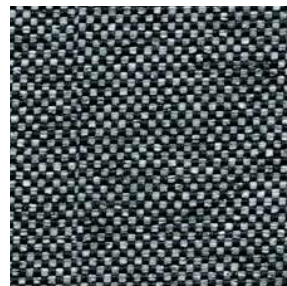
24



34



48



50



37

G3 - RIVET

INCLASS

G3 - ERA

By Camira

TECHNICAL DATA

Composition:

100% polyester.

Light fastness:

5, EN ISO 105 B02.

Abrasion:

≥100.000 Martindale EN ISO 12947.

Fastness to rubbing:

Wet 4.

Dry 4, ISO 105 X12.

Flammability:

EN 1021 - 1 (cigarette).

EN 1021 - 2 (match).

BS 7176 Low Hazard.

EN 13501-1 Adhered Class B, s1, d0.

EN 13501-1 Un-adhered Class C, s1, d0.

Environment:

OEKO-TEX® Standard 100.

Certificate Indoor Advantage™ Gold.

Width: 140cm

Weight: 320gr/m²

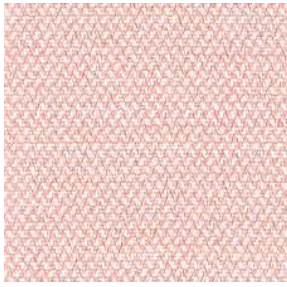


***Batch to batch variations may occur within commercial tolerances.

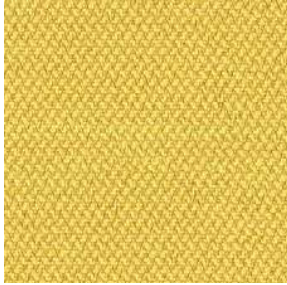


Note:

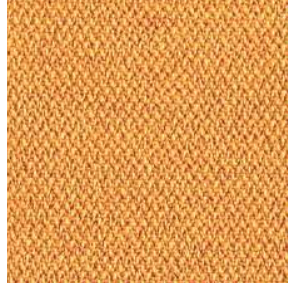
- The real colours and tones of the fabrics may differ from the digital image due to the scan process and the colour calibration of the different screens. Always request real fabric samples before ordering.
- Consult our Fabric and Leather Matrix to know about the availability of this material by product line.



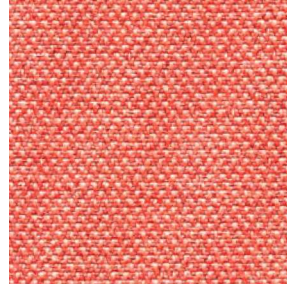
19



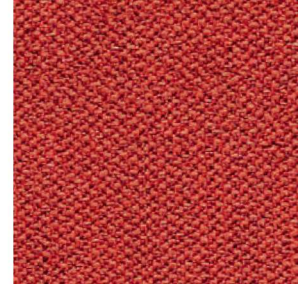
3



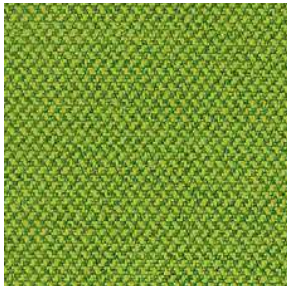
27



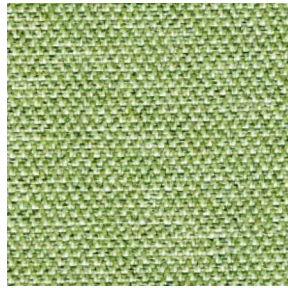
26



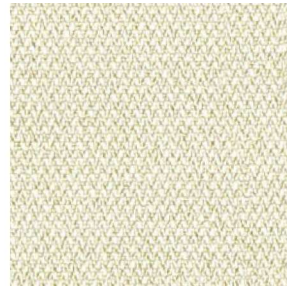
29



16



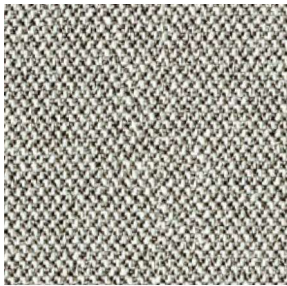
34



1



2



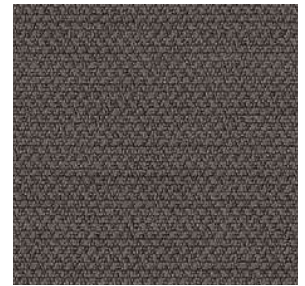
45



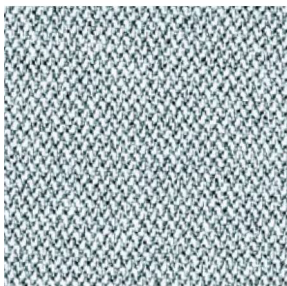
11



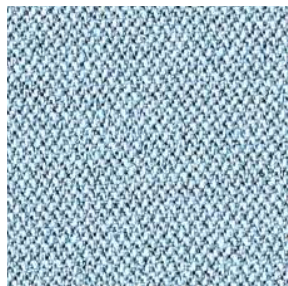
13



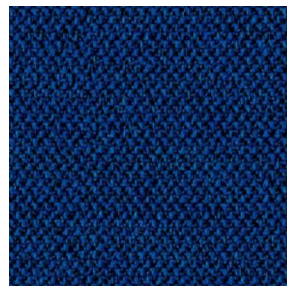
21



46



39



40



14

INCLASS

G3 - MEDLEY

By Gabriel

TECHNICAL DATA

Composition:

100% polyester.

Light fastness:

5 - 7, EN ISO 105 B02.

Abrasion:

75.000 Martindale EN ISO 12947-2.

Resistance to pilling:

4, EN ISO 12945-2.

Fastness to rubbing:

Wet 4 - 5.

Dry 4 - 5, ISO 105 X12.

Flammability:

BS EN 1021 1&2 Cigarette and Match.

BS EN 1021-1 Cigarette.

BS 476 Part 7, class 2.

Class Uno UNI 8457 - UNI 9174.

ÖNORM B 3825-B2-3800-Q1 UK.

CAL TB 117-2013.

ASTM E 84 Class 1 (Unadhered).

BS 5852 Part 1 0,1 Cigarette & match (option flame retardant).

BS 5852 Crib 5 (option flame retardant).

Environment:

Oeko-Tex® standard 100

100% free of heavy metals.

Width: 140cm

Weight: 510gr/m²



***Batch to batch variations may occur within commercial tolerances.

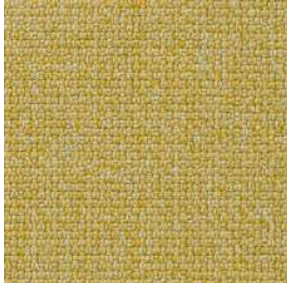


Note:

- The real colours and tones of the fabrics may differ from the digital image due to the scan process and the colour calibration of the different screens. Always request real fabric samples before ordering.
- Consult our Fabric and Leather Matrix to know about the availability of this material by product line.



65011



62054



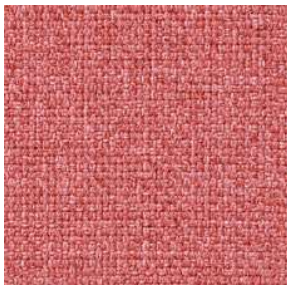
61003



67002



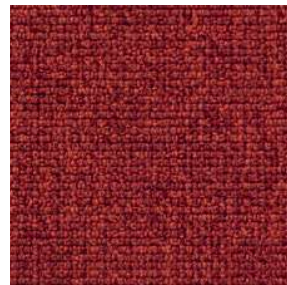
68005



63064



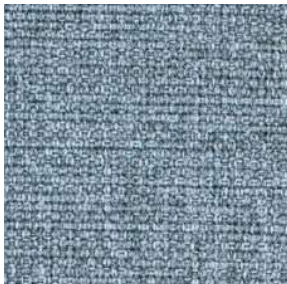
64019



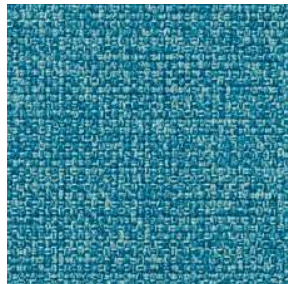
63016



63063



66008



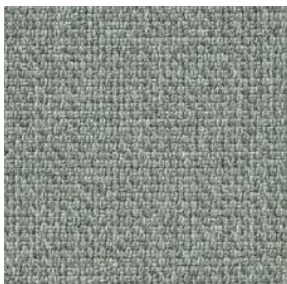
67006



66010



61004



60003



60167



60004



60999

INCLASS

G4 - MAXI

3D MESH

TECHNICAL DATA

Composition:

100% recyclable polyamide.

Lightfastness:

≥5, ISO 105-B02.

Abrasion:

50.000 Martindale, EN ISO 12947-2.

Breaking strength:

Warp N 990 ±5%.

Weft N 439 ±5%, EN ISO 13934-1.

Resistance to pilling:

≥4/5, EN ISO 12945-2.

Dye fastness to rubbing:

≥4/5, UNE-EN ISO 105-X12.

Width: ±140cm

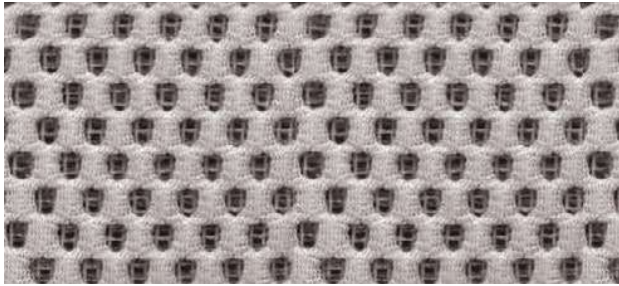
Weight: ±550gr/m²



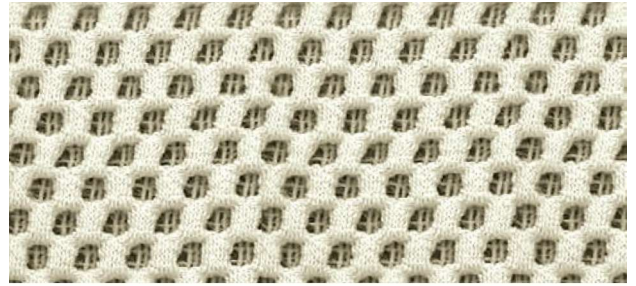
***Batch to batch variations may occur within commercial tolerances.

Note:

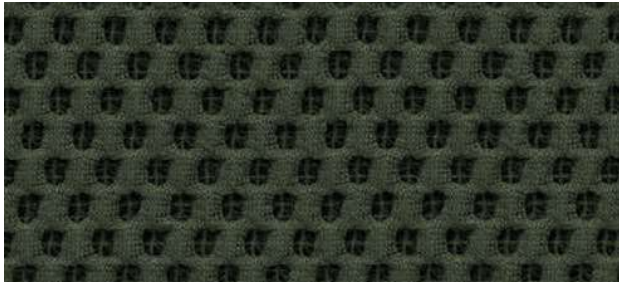
- The real colours and tones of the fabrics may differ from the digital image due to the scan process and the colour calibration of the different screens. Always request real fabric samples before ordering.
- Consult our Fabric and Leather Matrix to know about the availability of this material by product line.



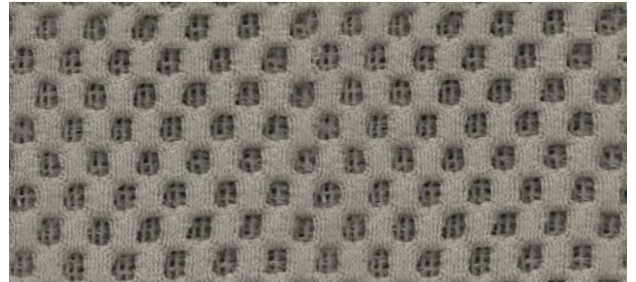
418



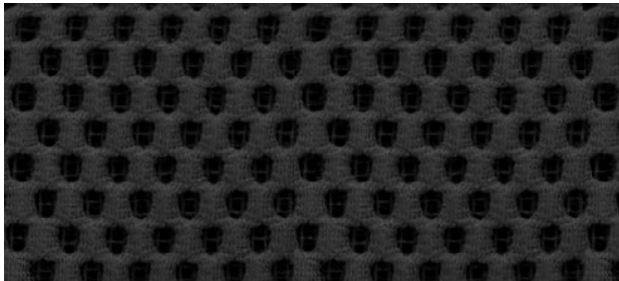
423



405



409



406



402

G4 - VELVET MESH

TECHNICAL DATA

Composition:

60% PA - 40% PL

Light fastness:

6 - Tolerance 5 to 8.
(Blue scale) - Xenotest
UNI EN ISO 105-B02.

Abrasion:

120.000 Martindale, EN ISO 12947-2.

Resistance to pilling:

5 - Tolerance 4 to 5. EN ISO 12945-2.

Dye fastness to rubbing:

4/5 - Tolerance 4 to 5. UNE-EN ISO 105-X12.

Inflamability:

UNE EN 1021-1.
CAL TB 117.

*Flammability performance is dependent on foam and glue used.

Widht: ±140cm

Weight: ±260gr/m²



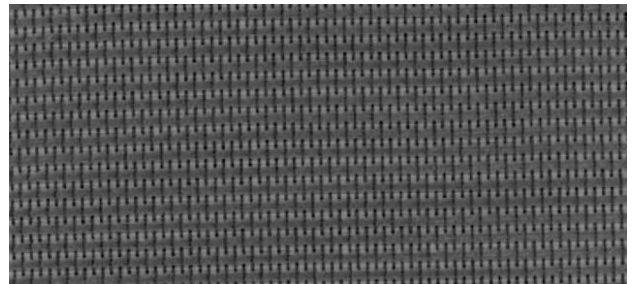
***Batch to batch variations may occur within commercial tolerances.

Note:

- The real colours and tones of the fabrics may differ from the digital image due to the scan process and the colour calibration of the different screens. Always request real fabric samples before ordering.
- Consult our Fabric and Leather Matrix to know about the availability of this material by product line.



1069



8007



8027



8033

G4 - VELVET MESH

G4 - FORT FR

By Crevin

TECHNICAL DATA

Composition:

45% recycled PES, 19% PES, 19% recycled PP, 9% MA 8% recycled CO.

Lightfastness:

>6, ISO 105 B02 • ISO 105 B02-A01.

Abrasion:

>100.000 Martindale, ISO 12947-2.

Resistance to pilling:

4 - 5, ISO 12945-2.

Fastness to rubbing:

Wet 4 - 5.

Dry 4-5, ISO 105-X12.

Seam strength:

Warp 4,1mm.

Weft 2,7mm, ISO 13936-2.

Flammability:

EN 1021 - 1 (cigarette).

EN 1021 - 2 (match).

BS 7176 Low Hazard.

CAL TB 117-2013.

BS 5852 Ignition source 0.

BS 5852 Ignition source 1.

UNI 9175 Classe 3 IM.

NFPA 260-2013.

Environment:

Oeko-Tex® standard 100.

Characteristics:

PERFORMANCE+ (easy cleaning technology).

Width: ±140cm

Weight: ±510gr/m²



***Batch to batch variations may occur within commercial tolerances.



72%
recycled material
Post Consumer Recycled
PP, PET and CO

Note:

- The real colours and tones of the fabrics may differ from the digital image due to the scan process and the colour calibration of the different screens. Always request real fabric samples before ordering.
- Consult our Fabric and Leather Matrix to know about the availability of this material by product line.



02



08



54



45



05



29



30



32



26



21



17



53

G4 - FORT FR

INCLASS

G4 - MAIN LINE FLAX

By Camira

TECHNICAL DATA

Composition:

75% virgin wool, 25% flax.

Light fastness:

4 - 5, EN ISO 105 B02.

Abrasion:

≥50.000 Martindale EN ISO 12947-2:1999.

Fastness to rubbing:

Wet 3.

Dry 4, ISO 105 X12.

Flammability:

EN 1021 - 1 (cigarette).

EN 1021 - 2 (match).

BS 7176 Low Hazard.

BS 5852 Ignition source 5.

BS 7176 Medium Hazard.

NF D 60-013.

ÖNORM B 3825 B1 & A 3800-1 Q1.

UNI 9175 Classe 1 IM.

BS 476 Part 7 Class 1 (Adhered)

EN 13501-1 Adhered Class B, s1 ,d0

BS 5867-2: Type B Curtains & Drapes

IMO FTP Code (Part 8)

The Furniture and Furnishing (Fire Safety)

Regulations 1988 (UK cigarette and match)

California Technical Bulletin 117

NFPA 260 + UFAC Class 1

ASTM E84 Class 1 or A (Adhered)

ASTM E84 Class 2 or B (Un-adhered).

Environment:

Complies with EU Ecolabel.

Certificate Indoor Advantage™ Gold.

Width: 140cm

Weight: 437gr/m²

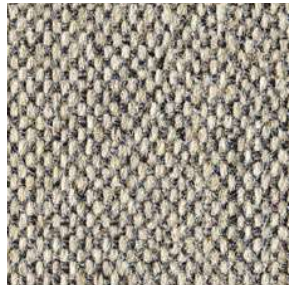


***Batch to batch variations may occur within commercial tolerances.



Note:

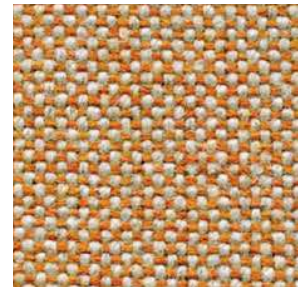
- The real colours and tones of the fabrics may differ from the digital image due to the scan process and the colour calibration of the different screens. Always request real fabric samples before ordering.
- Consult our Fabric and Leather Matrix to know about the availability of this material by product line.



2



20



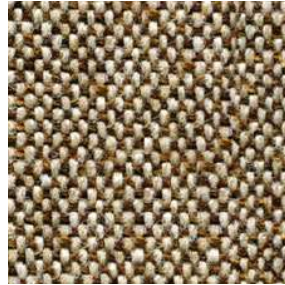
8



17



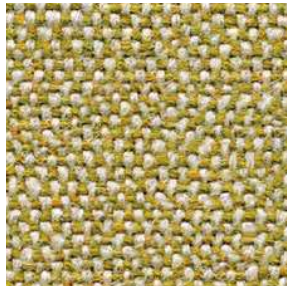
12



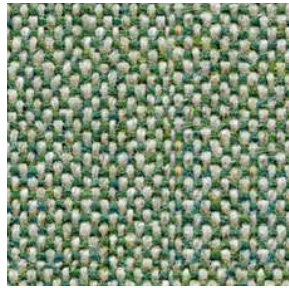
23



45



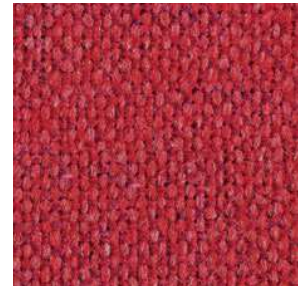
7



9



57



1



25



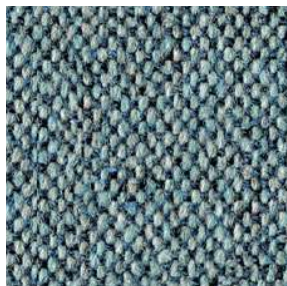
32



16



40



22



35



36



28

G4 - MAIN LINE FLAX

G4 - CONNECT

By Gabriel

TECHNICAL DATA

Composition:

48% wool, 41% recycled polyester, 9% polyamide, 2% polyester.

Light fastness:

5 - 7, ISO 105 B02.

Abrasion:

90.000 Martindale EN ISO 12947-2.

Resistance to pilling:

4 - 5, ISO 12945-2.

Fastness to rubbing:

Wet 4 - 5.

Dry 4 - 5, ISO 105 X12.

Flammability:

EN 1021 - 1 (cigarette).

EN 1021 - 2 (match).

BS 5852 Crib 5.

CAL TB 117-2013.

Class Uno UNI 9175 Class 1 | EMME.

BS 476 Part 7 class 1.

Environment:

Oeko-Tex® standard 100.

Complies with EU Ecolabel.

Width: 140cm

Weight: 370gr/m²



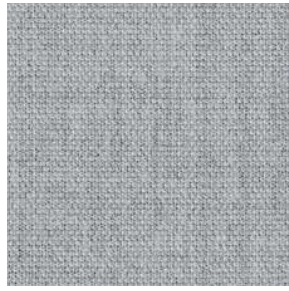
***Batch to batch variations may occur within commercial tolerances.



41%
recycled material
Post Consumer
Recycled Polyester

Note:

- The real colours and tones of the fabrics may differ from the digital image due to the scan process and the colour calibration of the different screens. Always request real fabric samples before ordering.
- Consult our Fabric and Leather Matrix to know about the availability of this material by product line.



60147



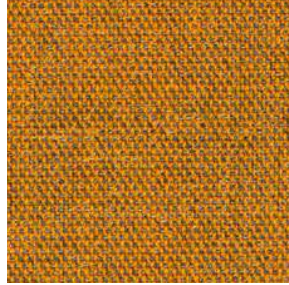
61207



61208



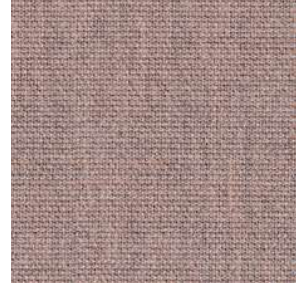
62109



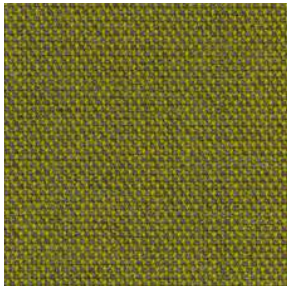
63106



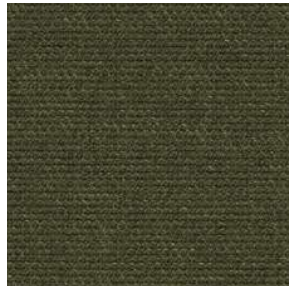
63107



64229



68232



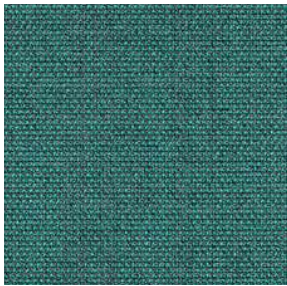
68233



61209



64230



67113



66206



67115



61210



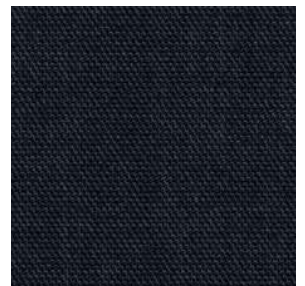
66205



60152



65127



60999

INCLASS

G4 - VALENCIA

By Spradling

TECHNICAL DATA

Composition:

Topcoat: 100% Vinyl.

Backing: 100% Polyester Hi-Loft²™.

Light fastness:

1000 hours, XENOTEST DIN 54004/NTC 1479.

Abrasion:

300.000 cycles de Martindale EN ISO 12947 Part 2.

Cold crack resistance:

-23°C.

Characteristics:

Antimicrobial protection.

Anibacterial protection.

Antimycotic protection.

Flammability:

EU: EN 1021 Part 1 y 2.

ES: UNE 23.727-90 1R/M.2.

FR: NF P 92-503/M2.

DE: DIN 4102 B2.

IT: UNI 9175 (1987) / UNI 9175/FA1 (1994) Classe 1.IM (UNO I EMME).

AT: ÖNORM B 3825, Gruppe 1 - Schwerbrennbares Verhalten.

AT: ÖNORM A 3800 Teil 1, Qualmbildungsklasse Q1 - schwachqualmend.

IMO FTP 2010 Code MSC.307 (88) Part 8 3.1 & 3.2.

US: FMVSS 302.

US: FAR 25/853.

(MED) Marine Equipment Directive.

ECE R118.02 (replaces Directive 95/28/CE) Annexes 6, 7 & 8.

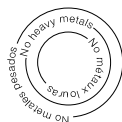
EN 71-2:2006+A1:2007 - Toy safety - Parte 2: Inflammability.

Width: 140cm

Weight: 685gr/m²



***Batch to batch variations may occur within commercial tolerances.



PERMABLOK[®]
ADVANCED VINYL PROTECTION

Note:

- The real colours and tones of the fabrics may differ from the digital image due to the scan process and the colour calibration of the different screens. Always request real fabric samples before ordering.
- Consult our Fabric and Leather Matrix to know about the availability of this material by product line.



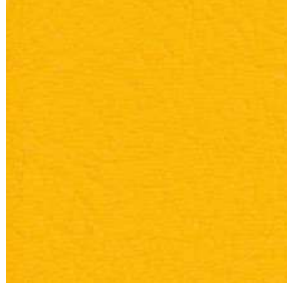
2117



0002



2114



2111



2116



0035



2074



2110



4002



4001



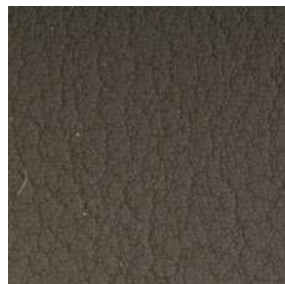
5065



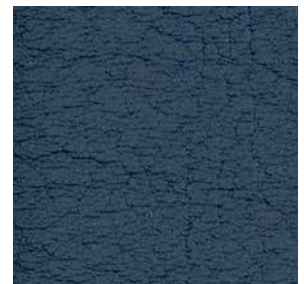
4040



4045



4003



2108



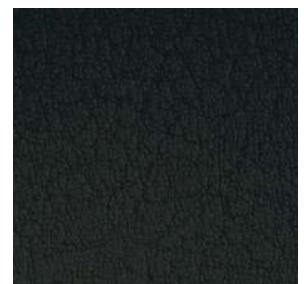
8032



4044



4041



9035

INCLASS

G4 - STEP

By Gabriel

TECHNICAL DATA

Composition:

100% trevira CS.

Light fastness:

5 - 7, ISO 105 B02.

Abrasion:

100.000 Martindale EN ISO 12947.

Resistance to pilling:

4 - 5, ISO 12945-2.

Fastness to rubbing:

Wet 4 - 5. - Dry 4 - 5, ISO 105 X12.

Flammability:

BS EN 1021 1&2 Cigarette and Match.

BS EN 1021-1 Cigarette.

BS 5852 Crib 5.

ÖNORM A3800-B1-B3825-Q1 UK.

FAR/JAR 25.853 (g) (i) (ii).

AM 18 - NF D 60-013-(only for fabric).

CA TB 117-2013.

Class Uno UNI 9175 Class 1 | EMME.

DIN EN 13501-1 B-s1,d0.

IMO MSC 307 (88) Annex 1 part 8.

IMO MSC 307 (88) Annex 1 part 8 UK.

MED Certificate IMO.

MED Certificate IMO UK.

CAN/ULC-S102.2.

CAN/ULC-S109.

NFPA 701.

Environment:

Oeko-Tex® - EU Ecolabel.

Width: 140cm

Weight: 470gr/m²

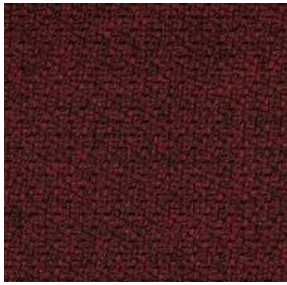


***Batch to batch variations may occur within commercial tolerances.

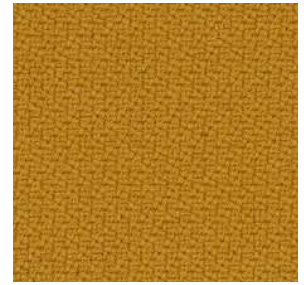


Note:

- The real colours and tones of the fabrics may differ from the digital image due to the scan process and the colour calibration of the different screens. Always request real fabric samples before ordering.
- Consult our Fabric and Leather Matrix to know about the availability of this material by product line.



2442 - 64159



2440 - 62057



2543 - 68301



2442 - 68165



2440 - 68165



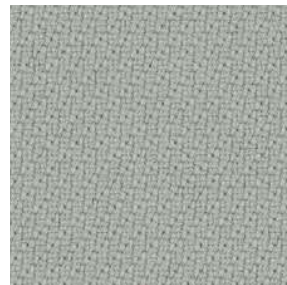
2440 - 61149



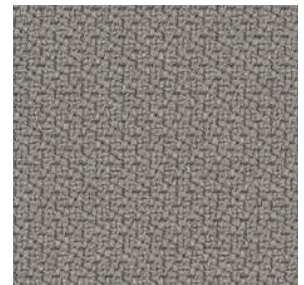
2441 - 60004



2441 - 67004



2440 - 60004



2440 - 60011



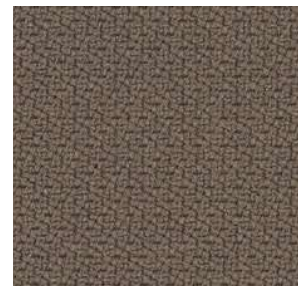
2442 - 60011



2442 - 66152



2440 - 66764



2440 - 60090



2442 - 61103



2442 - 60021



2440 - 60999



2440 - 68121

INCLASS

G5 - DOLCE

By Spradling

TECHNICAL DATA

Composition:

Topcoat: 100% polyurethane.

Backing: 100% rayon.

Light fastness:

40 hours, XENOTEST DIN 54004/NTC 1479.

Abrasion:

≥300.000 Martindale EN ISO 12947 Part 2.

Cold crack resistance:

-23°C.

Characteristics:

Antibacterial protection.

Flammability:

EU: EN 1021 Part 1 y 2

US: FMVSS 302

UK: BS 5852 Part 2 CRIB 5

IMO FTP 2010 Code MSC.307 (88) Part 8 3.1 & 3.2.

Width: 140cm

Weight: 685gr/m²



***Batch to batch variations may occur within commercial tolerances.

Note:

- The real colours and tones of the fabrics may differ from the digital image due to the scan process and the colour calibration of the different screens. Always request real fabric samples before ordering.
- Consult our Fabric and Leather Matrix to know about the availability of this material by product line.



6703



6706



6708



6719



6714



6709



6711



6712



6717



6729



6726



6727



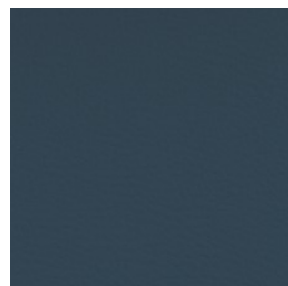
6736



6735



6734



6724



6728

G5 - DOLCE

INCLASS

G5 - SYNERGY

By Camira

TECHNICAL DATA

Composition:

95% virgin wool, 5% polyamide.

Light fastness:

5, ISO 105-B02.

Abrasion:

≥100.000 Martindale EN ISO 12947.

Fastness to rubbing:

Wet 4.

Dry 4, ISO 105 X12.

Flammability:

EN 1021 - 1 (cigarette).

EN 1021 - 2 (match).

BS 7176 Low Hazard.

NF D 60-013.

ÖNORM B 3825 & A 3800-1 (sobre 58kg/m³ Foam CMHR).

UNI 9175 Classe 1 IM.

EN 13501-1 Adhered Class D, s1, d0.

EN 13501-1 Un-adhered Class E, s2, d0.

IMO FTP Code (Part 8).

Environment:

Complies with EU Ecolabel.

Certificate Indoor Advantage™ Gold.

Width: 140cm

Weight: 400gr/m²

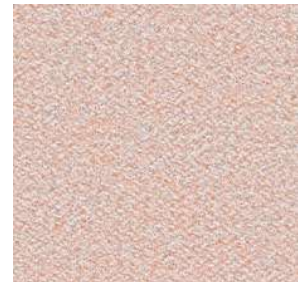


***Batch to batch variations may occur within commercial tolerances.

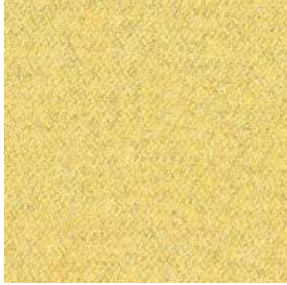


Note:

- The real colours and tones of the fabrics may differ from the digital image due to the scan process and the colour calibration of the different screens. Always request real fabric samples before ordering.
- Consult our Fabric and Leather Matrix to know about the availability of this material by product line.



74



45



43



73



84



32



22



37



34



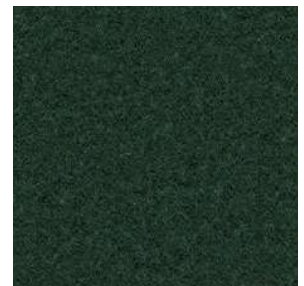
49



59



62



41



8



16



17



27

INCLASS

G5 - REMIX

By Kvadrat

TECHNICAL DATA

Designer:

Giulio Ridolfo.

Composition:

90% new wool, 10% nylon.

Light fastness:

5 - 7, ISO 105-B02.

Abrasion:

100.000 Martindale EN ISO 12947.

Resistance to pilling:

4, EN ISO 12945.

Flammability:

AS/NZS 1530.3.

BS 5852 part 1.

EN 1021-1/2.

IMO FTP Code 2010: Part 8.

NF D 60 013.

NFPA 260.

Önorm B1/Q1.

UNI 9175 1IM.

US Cal. Bull. 117-2013.

Environment:

Complies with EU ecolabel "The Flower".

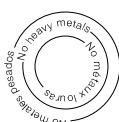
100% free of heavy metals.

Width: 140cm

Weight: 415gr/m²

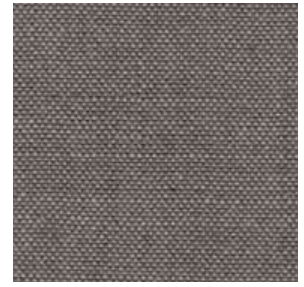


***Batch to batch variations may occur within commercial tolerances.



Note:

- The real colours and tones of the fabrics may differ from the digital image due to the scan process and the colour calibration of the different screens. Always request real fabric samples before ordering.
- Consult our Fabric and Leather Matrix to know about the availability of this material by product line.



136



433



452



346



653



326



933



152



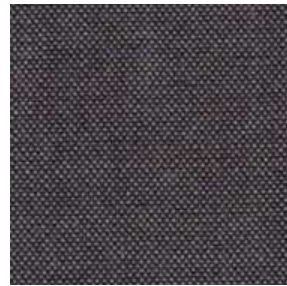
356



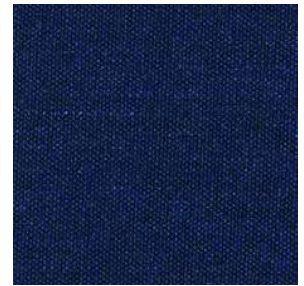
733



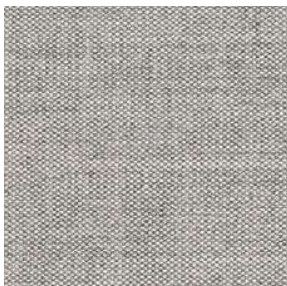
743



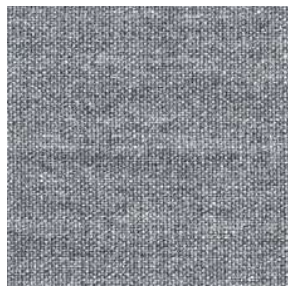
266



773



123



143



163



183

INCLASS

G5 - CANVAS

By Kvadrat

TECHNICAL DATA

Designer:

Giulio Ridolfo.

Composition:

90% new wool, 10% nylon.

Light fastness:

5 - 7, ISO 105-B02.

Abrasion:

100.000 Martindale EN ISO 12947.

Resistance to pilling:

4 - 5, EN ISO 12945.

Flammability:

AS/NZS 1530.3.

BS 5852 Crib 5 when flameprotected.

BS 5852, ignition source 3.

BS 5852 part 1.

DIN 4102 B2.

IMO FTP Code 2010: Part 8.

NF D 60 013.

NFPA 260.

Önorm B1/Q1.

UNI 9175 1IM.

US Cal. Bull. 117-2013.

Environment:

Complies with EU ecolabel "The Flower".

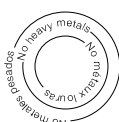
100% free of heavy metals.

Width: 140cm

Weight: 480gr/m².



***Batch to batch variations may occur within commercial tolerances.



Note:

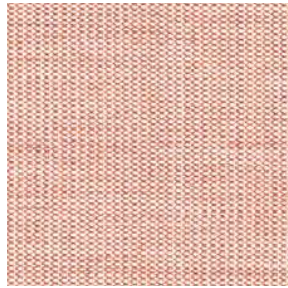
- The real colours and tones of the fabrics may differ from the digital image due to the scan process and the colour calibration of the different screens. Always request real fabric samples before ordering.
- Consult our Fabric and Leather Matrix to know about the availability of this material by product line.



124



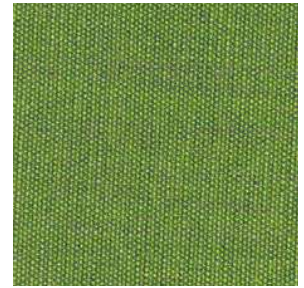
244



614



654



954



964



454



424



264



364



684



794



174

G5 - CANVAS

INCLASS

G6 - STEELCUT TRIO

By Kvadrat

TECHNICAL DATA

Designer:

Frans Dijkmeijer and Giulio Ridolfo.

Composition:

90% new wool, 10% nylon.

Light fastness:

5 - 7 ISO 105-B02.

Abrasion:

100.000 Martindale EN ISO 12947.

Resistance to pilling:

4, EN ISO 12945.

Flammability:

AS/NZS 1530.3

AS/NZS 3837 class 2.

BS 5852 part 1.

DIN 4102 B2.

EN 1021-1/2.

IMO FTP Code 2010: Part 8.

NF D 60 013.

NFPA 260.

Önorm B1/Q1.

UNI 9175 1IM.

US Cal. Bull. 117-2013.

Environment:

Complies with EU ecolabel "The Flower".

100% free of heavy metals.

Width: 140cm

Weight: 770gr/m²

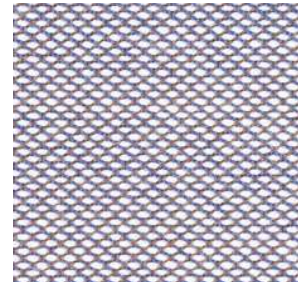


***Batch to batch variations may occur within commercial tolerances.



Note:

- The real colours and tones of the fabrics may differ from the digital image due to the scan process and the colour calibration of the different screens. Always request real fabric samples before ordering.
- Consult our Fabric and Leather Matrix to know about the availability of this material by product line.



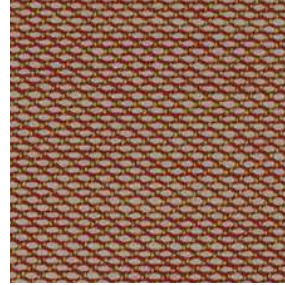
806



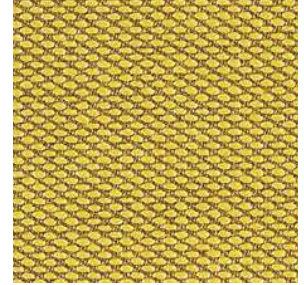
105



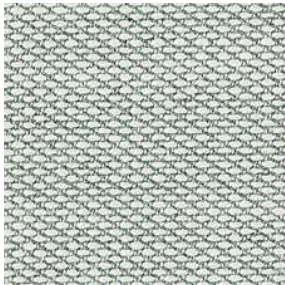
205



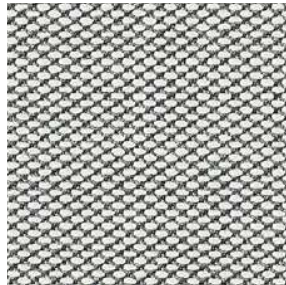
515



453



113



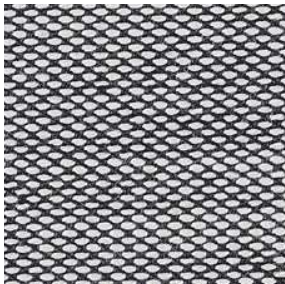
133



236



476



124



916



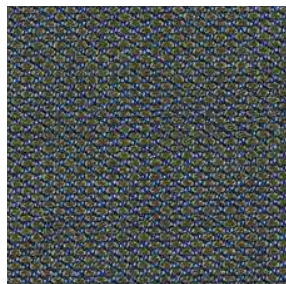
253



645



716



883



796



383

G6 - STEELCUT TRIO

INCLASS

G6 - FIORD

By Kvadrat

TECHNICAL DATA

Designer:

Louise Sigvardt & Tone Barnung.

Composition:

92% new wool, 8% nylon.

Light fastness:

5 - 7, ISO 105-B02.

Abrasion:

60.000 Martindale EN ISO 12947.

Resistance to pilling:

4 - 5, EN ISO 12945.

Flammability:

AS/NZS 3837 class 2.

ASTM E84 Class A Adhered.

ASTM E84 Class A Unadhered.

BS 5852 part 1.

EN 1021-1/2.

IMO FTP Code 2010:Part 8.

NF D 60 013.

NFPA 260

ÖNORM B1/Q1

UNI 9175 1IM.

US Cal. Bull. 117-2013.

Environment:

Complies with EU ecolabel "The Flower"

100% free of heavy metals.

Width: 140cm

Weight: 500gr/m²



***Batch to batch variations may occur within commercial tolerances.

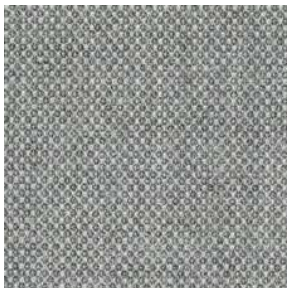


Note:

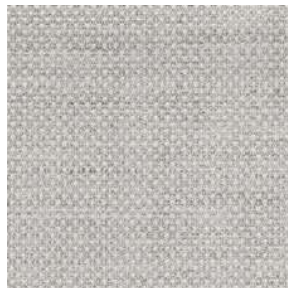
- The real colours and tones of the fabrics may differ from the digital image due to the scan process and the colour calibration of the different screens. Always request real fabric samples before ordering.
- Consult our Fabric and Leather Matrix to know about the availability of this material by product line.



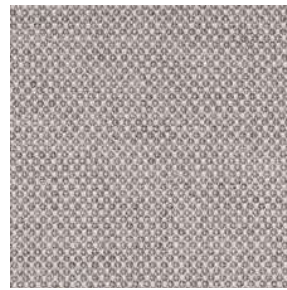
271



151



121



251



451



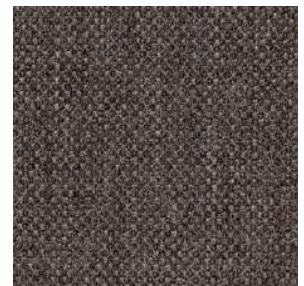
751



551



951



371



771



591



961



191

G6 - FIORD

INCLASS

G7 - HALLINGDAL

By Kvadrat

TECHNICAL DATA

Designer:

Nanna Ditzel.

Composition:

70% new wool, 30% viscose.

Light fastness:

5 - 7 ISO 105-B02.

Abrasion:

100.000 Martindale EN ISO 12947.

Resistance to pilling:

3, EN ISO 12945.

Flammability:

AS/NZS 1530.3.

AS/NZS 3837.

BS 5852 Crib 5.

BS5852 part 1.

DIN 4102 B2.

EN 1021-1/2.

IMO FTP Code 2010: Part 8.

NF D 60 013.

NFPA 260.

Önorm B1/Q1.

UNI 9175 1IM.

US Cal. Bull. 117 – 2013.

Environment:

Complies with EU ecolabel “The Flower”.

Width: 140cm

Weight: 795gr/m²

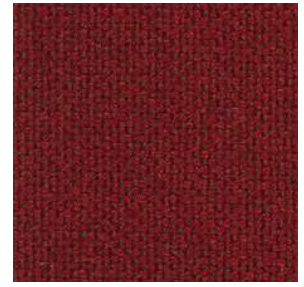


***Batch to batch variations may occur within commercial tolerances.



Note:

- The real colours and tones of the fabrics may differ from the digital image due to the scan process and the colour calibration of the different screens. Always request real fabric samples before ordering.
- Consult our Fabric and Leather Matrix to know about the availability of this material by product line.



687



200



407



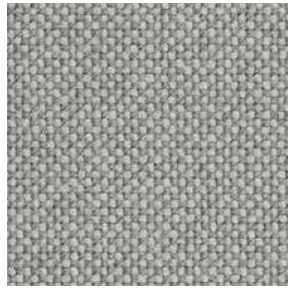
420



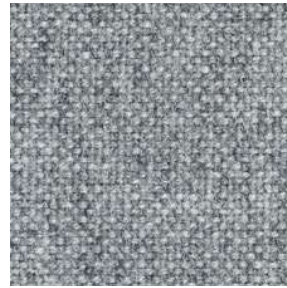
227



100



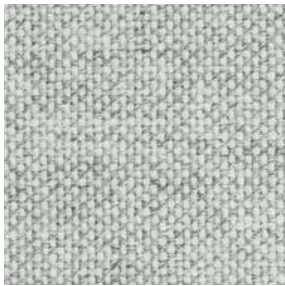
123



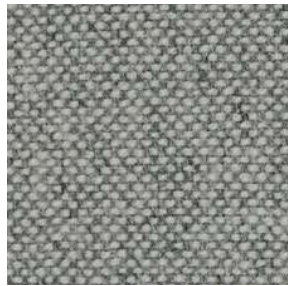
130



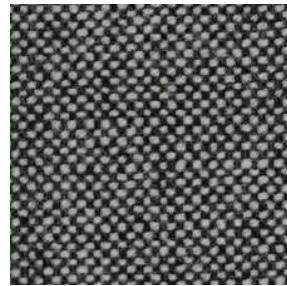
368



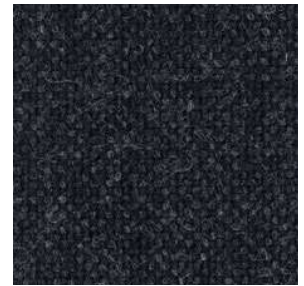
110



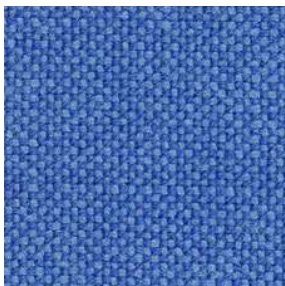
116



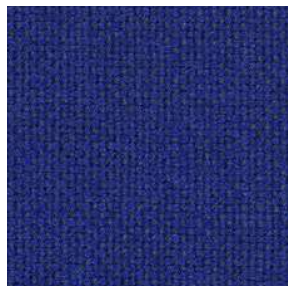
126



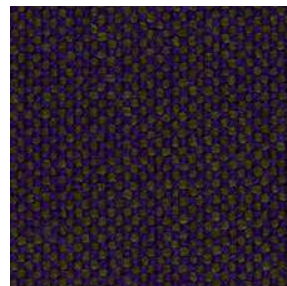
180



733



773



968



376

G7 - HALLINGDAL

G10 - LEATHER

TECHNICAL DATA

Composition:

Cow leather.

Light fastness:

≥4/5, UNI EN ISO 105B02.

Fastness to rubbing:

Wet ≥4 (150 cycles).

Dry ≥4 (500 cycles).

Perspiration ≥4 (80 cycles), UNI EN ISO 11640 - 11641 (pH8).

Tear strength:

>20N, EN ISO 3377-1.

Determination of PH:

>3,5, EN ISO 4045.

Adhesion of the finish:

≥2, UNI EN ISO 11644.

Determination of dry ex resistance:

Without damage, UNI EN ISO 5402.

Flammability:

Ignition source 0 (cigarette).

Ignition source 1 (match).

BS 5852-1979.

BS EN 1021-1-2.

Thickness:

0,9 - 1,1mm

Average surface:

4,8 - 5,0m²

Maintenance:

Wash with neutral soap and water or with a cleaning product for leather.

***Batch to batch variations may occur within commercial tolerances.

Note:

- The real colours and tones of the fabrics may differ from the digital image due to the scan process and the colour calibration of the different screens. Always request a real leather sample before ordering.
- Consult our Fabric and Leather Matrix to know about the availability of this material by product line.



207



214



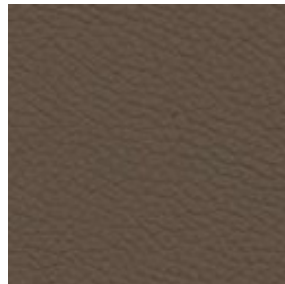
218



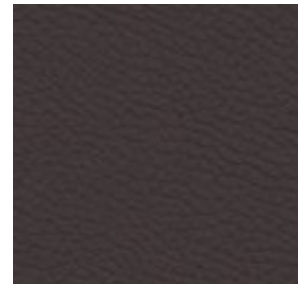
224



201



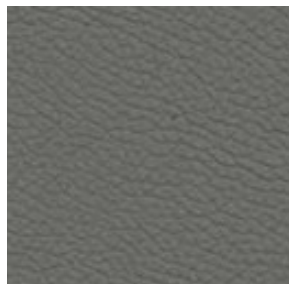
216



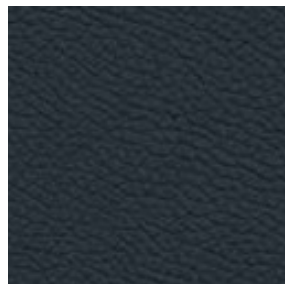
203



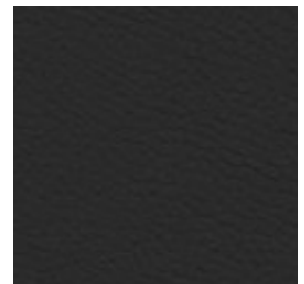
219



208



209



204

G10 - LEATHER

G11 - LEATHER

TECHNICAL DATA

Composition:

Cow leather.

Light fastness:

≥5, UNI EN ISO 105B02.

Fastness to rubbing:

Wet ≥4 (80 cycles).

Dry ≥4 (500 cycles).

Perspiration ≥4 (50 cycles), UNI EN ISO 11640 - 11641.

Tear strength:

≥20N, EN ISO 3377-1.

Determination of PH:

≥3,5 ≤0,7 EN ISO 4045.

Adhesion of the finish:

≥2,5N / 10mm, UNI EN ISO 11644.

Determination of dry flex resistance:

>50.000 cycles, UNI EN ISO 5402-1.

Flammability:

Ignition source 0 (cigarette)

Ignition source 1 (match), BS 5852-1:79.

Thickness:

0,9 - 1,1mm

Average surface:

4,8 - 5,0m²

Maintenance:

Wash with neutral soap and water or with a cleaning product for leather.

***Batch to batch variations may occur within commercial tolerances.

Note:

- The real colours and tones of the fabrics may differ from the digital image due to the scan process and the colour calibration of the different screens. Always request a real leather sample before ordering.
- Consult our Fabric and Leather Matrix to know about the availability of this material by product line.



333



348



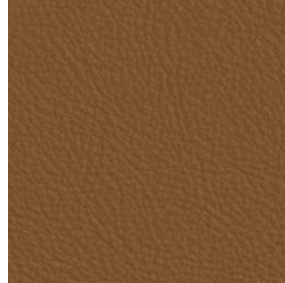
346



320



331



332



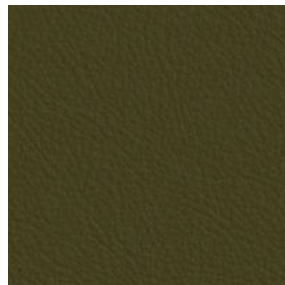
344



324



362



375



326



317



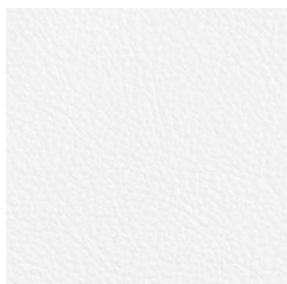
321



325



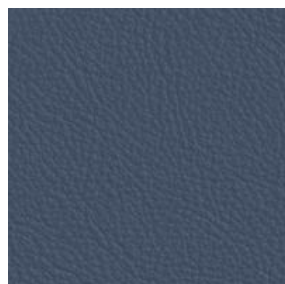
328



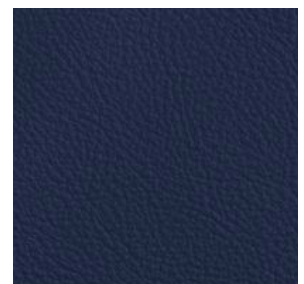
311



322



357



358

G11 - LEATHER

INCLASS

METAL PAINT & FINISHES

INCLASS powder coats all painted metal components for a durable finish eliminating VOC's (volatile organic compounds) from being released into the environment. The result is a finish that is abrasion and impact resistant.

We offer a wide palette of metal finishes that are priced by grades. M1 colours, M2 colours and chrome.

[↗ GO TO INDEX ↖](#)



METAL PAINT MATRIX BY COLLECTION

	ALTEA	ANN	ARC	ARUM	ARYN	ARYN MAX	ARYN WOOD	BARLIS	BINAR 60	BINAR EXECUTIVE	DUNAS LOUNGE	DUNAS XL	DUNAS XS	ELIX	ENTROPY	ESCALAS	ESITT	EXA	FLAT	FLOE	ITEK PRO	KERN	KORI	LAMINAR
METAL FINISHES																								
M1 Colours	○	●	●	●	●	●	●	●	●	○	●	●	●	●	●	●	○	○	●	●	○	●	○	●
M2 Colours	○	●	●	●	●	●	●	●	○	┆	●	●	○	●	●	●	┆	┆	●	●	┆	┆	┆	●
Chrome	○	●	●	●	●	●	●	┆	○	┆	┆	○	○	┆	┆	┆	┆	┆	●	┆	┆	┆	┆	

LEGEND

- Not available
- Available
- See specifications

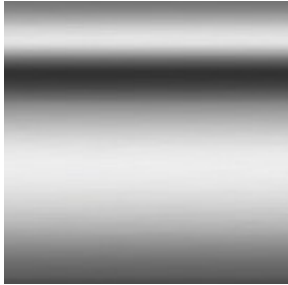
LAN	●	●	●
LAPSE	●	●	●
LEA	●	●	●
LEX	●	●	●
LIN TAPIZ	●	●	●
LIN WOOD	●	●	●
MARCUS	●	●	●
NIM	●	●	●
NUME	●	●	●
ORUS	○	○	○
OSWELL	○	○	○
PAU	○	○	○
PLANIA BENCH	●	●	●
PLANIA TABLE	●	●	●
REVER	○	○	○
SUI	●	●	●
TAIA	○	○	○
TAO	●	●	●
TETRIS	●	●	●
UNNIA	○	○	○
UNNIA TAPIZ	○	○	○
VARYA	○	○	○
VARYA TAPIZ	○	○	○
VARYA WOOD	○	○	○
VARYA XL	○	○	○
XAIL	●	●	●
ZENPRO	○	○	○

INCLASS

METAL

SAMPLE CARD

CHROME



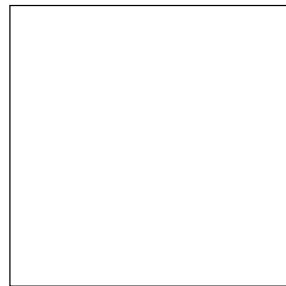
M1 COLOURS



B00 Black

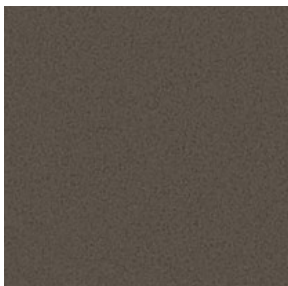


Aluminio



W01 White

M3 COLOURS



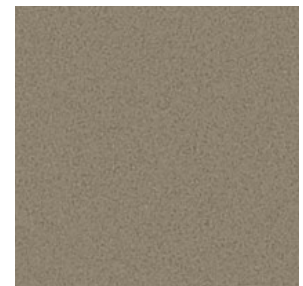
Bronze



Copper



Gold



Titanium

M2 COLOURS



G49 Anthracite



B52 Deep blue



V92 Olive green



M56 Coffee brown



G42 Light grey



B44 Light blue



V74 Sage green



R04 Bordeaux



M82 Stone



M44 Desert brown



M38 Camel



O24 Terracotta



Rust Brown



Rust Grey



P70 Pink



Y32 Golden ochre

INCLASS

WOOD

VENEER / PAINTED WOOD

VENEER / SOLID WOOD

Due to natural variations of the wood, finished products may vary from samples in colour, texture, and grain.

Wood parts may contain knots or grain patterns of different tones and are not homogeneous. This may lead to variations from one piece to another.

The wooden parts will darken and change tone with age and exposure to light.

All veneer and solid wood parts are finished with post-catalysed wood coatings, which provide exceptional durability and resistance.

PAINTED WOOD

All painted wood parts are finished with post-catalysed wood coatings with a process of three layers. This process provides exceptional durability and resistance.

BESPOKE WOOD FINISHES

Upon approval and with an upcharge, bespoke wood finishes are available. Contact our Customer Service for pricing and lead times.

Prior to approval, customer will send a sample for matching at least 6x6cm in surface dimension. Once received in our factory and approved, INCLASS will produce a matching sample following acknowledgement of the order. INCLASS will schedule the order for production only when the sample has been approved by the Customer.

Pantone® or RAL colour matches do not require approval and sample matching, but it may be requested by the Customers at a cost to be agreed with our Customer Service.

INCLASS may ask for payments in advance on bespoke finishes.



INCLASS

WOOD MATRIX BY COLLECTION

WOOD FINISHES
Beech
Oak
Walnut
W1 Colours
W2 Colours

LEGEND

- Not available
- Available
- See specifications

ALTEA	-	●	-	-	-
ANN	●	●	●	●	●
ARC	●	●	●	●	●
ARYN WOOD	-	-	●	-	-
BINAR 60	-	-	-	●	-
DUNAS XL	-	-	-	●	-
DUNAS XS	-	-	-	●	-
ESCALAS	-	-	-	●	-
LAPSE	-	-	-	●	-
LEA	-	-	●	-	-
LIN WOOD	-	-	-	●	-
NIIM	●	-	-	●	-
PAU	-	●	-	-	-
PLANIA BENCH	-	-	●	-	-
PLANIA TABLE	-	-	●	-	-
REVER	-	-	●	-	-
STIKS	●	-	-	●	-
TAIA	-	-	-	●	-
TAO	●	-	●	-	-
UNNIA	-	-	-	●	-
UNNIA TAPIZ	-	-	-	●	-
VARYA	-	-	-	●	-
VARYA TAPIZ	-	-	-	●	-
VARYA WOOD	-	-	○	-	-
VARYA XL	-	-	-	●	-
WUDI	-	-	-	●	-
XAIL	-	-	-	●	-

INCLASS

WOOD

veneer / solid wood

BEECH



Natural Stain



Walnut Stain



Wenge Stain

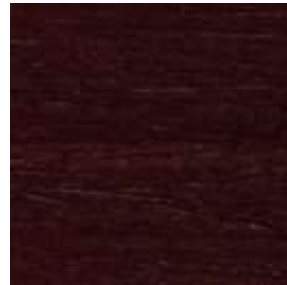
OAK



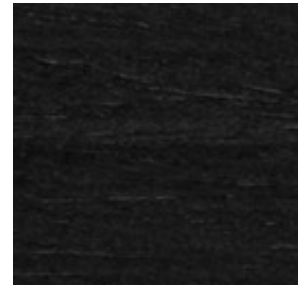
Natural Stain



Walnut Stain

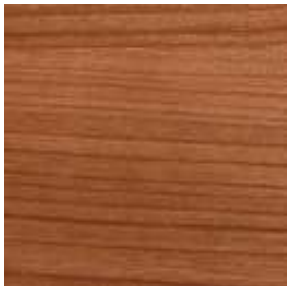


Wenge Stain



Black Stain

WALNUT



Natural Stain

INCLASS

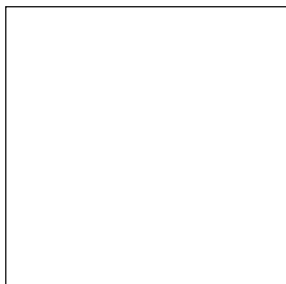
WOOD

LACQUERED COLOURS

W1 COLOURS



B00 Black



W01 White

W2 COLOURS



G49 Anthracite



B52 Deep blue



V92 Olive green



M56 Coffee brown



G42 Light grey



B44 Light blue



V74 Sage green



R04 Bordeaux



M82 Stone



M44 Desert brown



M38 Camel



O24 Terracotta



P70 Pink



Y32 Golden ochre

WOOD - LACQUERED COLORS

INCLASS

POLYPROPYLENE

PP1 COLOURS



POLYPROPYLENE

POLYPROPYLENE MATRIX BY COLLECTION

	ALTEA	ANN	ARC	ARUM	ARYN	ARYN MAX	ARYN WOOD	BINAR 60	BINAR EXECUTIVE	DUNAS LOUNGE	DUNAS XL	DUNAS XS	ENTROPY	ESCALAS	ESITT	EXA	ITEK PRO
POLYPROPYLENE FINISHES																	
PP1 Colours	-	-	-	•	•	•	-	-	-	-	-	-	-	-	-	-	-
ECOPLAS® Colours	-	-	-	•	-	-	-	-	-	-	-	-	-	-	-	-	-

LEGEND

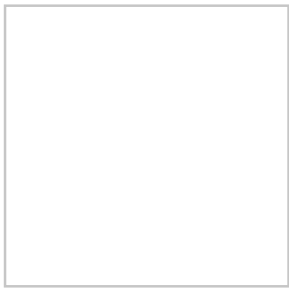
- Not available
- Available
- See specifications

KERN	-	-
KORI	-	-
LAPSE	-	-
LEA	●	-
LIN TAPIZ	-	-
LIN WOOD	-	-
MARCUS	-	-
NIM	-	-
ORUS	○	-
OSWELL	●	-
PAU	-	-
PLANIA BENCH	-	-
REVER	-	-
TAIA	●	●
TAO	-	-
TETRIS	-	-
UNNIA	-	●
UNNIA TAPIZ	-	-
VARYA	●	●
VARYA TAPIZ	-	-
VARYA WOOD	-	-
VARYA XL	●	●
WUDI	-	-
XAIL	-	-
ZENPRO	-	-

INCLASS

POLYPROPYLENE

PP1 COLOURS FOR MONOSHELLS



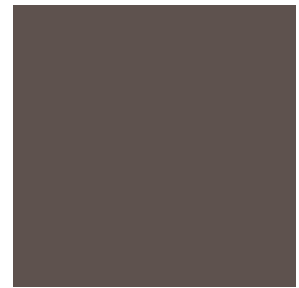
W01 White



B44 Light blue



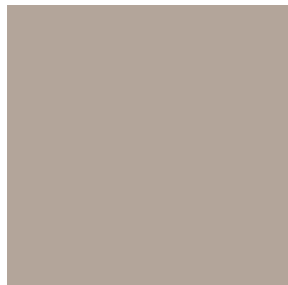
R04 Bordeaux



M56 Coffee brown



G42 Light grey



M82 Stone



M38 Camel



O24 Terracotta



Y32 Golden ochre



P70 Pink

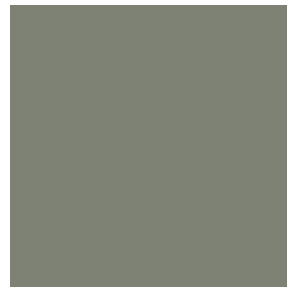
ECOPLAS®
100% recycled polypropylene



B00 Black



V92 Olive green



V74 Sage green



M44 Desert brown



B52 Deep blue



G49 Anthracite

INCLASS

POLYPROPYLENE

PP1 COLOURS FOR BASES



B00 Black



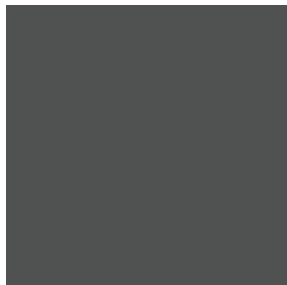
B52 Deep blue



V92 Deep green



M56 Coffee brown



G49 Anthracite



B44 Light blue



V74 Sage green



R04 Bordeaux



G42 Light grey



M82 Stone



M38 Camel



O24 Terracotta



W01 White



M44 Desert sand



Y32 Ochre



P70 Pink

INCLASS

ROTOMOLDED POLYETHYLENE

Rotomolded polyethylene items are suitable for indoor and outdoor use.

Composed polyethylene colours may present surface irregularities that are intrinsic to these type of finishes. INCLASS will not accept returns due to this

Painted polyethylene colours are available in matt or gloss finish. Customer must specify.

Upon approval, the bases can also be painted with any of the RAL colours in matt or gloss finish. Contact Customer Service for lead time.

Upon approval other bespoke colours are also available. Contact our Customer Service for pricing and lead time.

[↗ GO TO INDEX ↖](#)



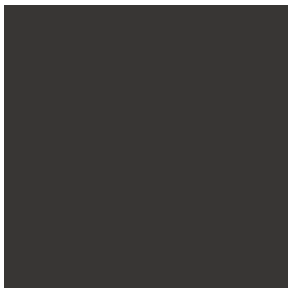
ROTOMOLDED POLYETHYLENE

INCLASS

ROTOMOLDED POLYETHYLENE

POLYETHYLENE COLOURS

PE1 SOLID COLOURS



B00* Black



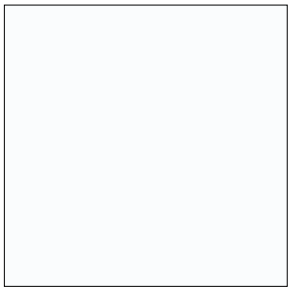
G49 Anthracite



G42 Light Grey



M82 Stone



W01 White

*B00 Black 100% recycled material

PE2 SOLID COLOURS



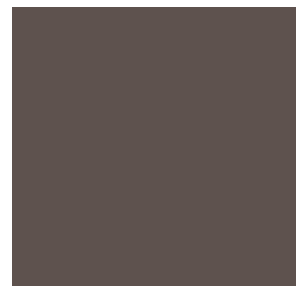
M38 Camel



M44 Desert Brown

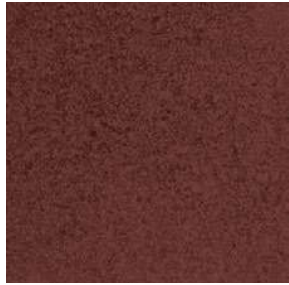


V74 Sage Green



M56 Coffee Brown

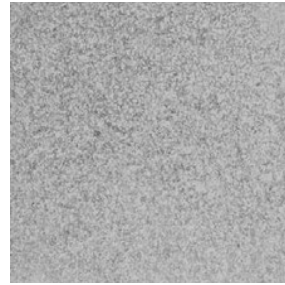
PE2 COMPOSED COLOURS



Rust Brown

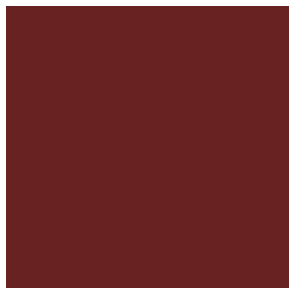


Pearl Sand



Concrete

PE3 PAINTED COLOURS



R04 Bordeaux



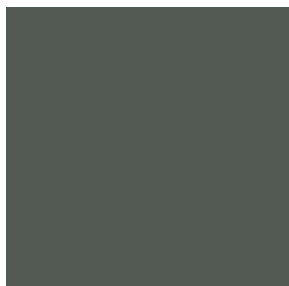
O24 Terracotta



Y32 Golden Ochre



P70 Pink



V92 Olive Green



B52 Deep Blue



B44 Light Blue

*100% recycled material

PE5 BESPOKE PAINTED COLOURS

OPTIONALLY they can be finished in all the colours of the RAL sample card.

INCLASS

TABLE TOPS



TABLE TOPS MATRIX BY COLLECTIONS

	ANN	BARLIS
TABLE TOPS FINISHES		
Beech	•	-
Oak	•	•
Walnut	-	•
W1 colours	•	•
W2 colours	•	•
Solid Fenix®	-	•
Fenix® laminate	-	-
Solid HPL, black core	-	•
Solid HPL, white core	-	•
Solid HPL, sand core	-	•
Solid HPL STONE	-	•
Melamine	-	-

INCLASS

TABLE TOPS

WOOD VENEER

MDF core with natural wood surface.

BEECH



Natural Stain



Walnut Stain



Wenge Stain

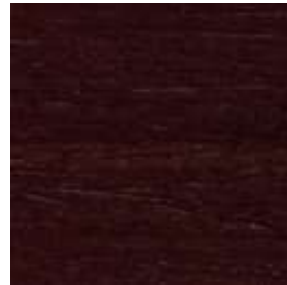
OAK



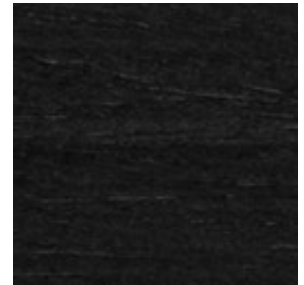
Natural Stain



Walnut Stain

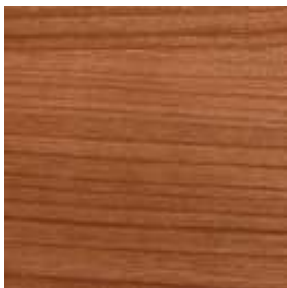


Wenge Stain



Black Stain

WALNUT



Natural Stain

INCLASS

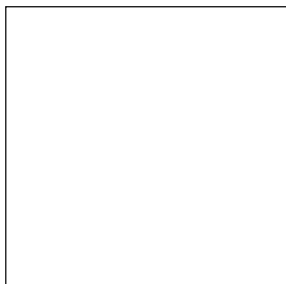
TABLE TOPS

LACQUERED MDF

W1 COLOURS



B00 Black



W01 White

W2 COLOURS



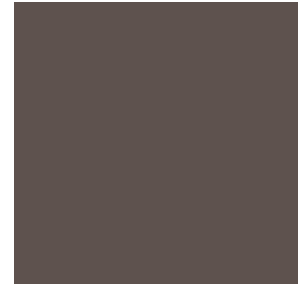
G49 Anthracite



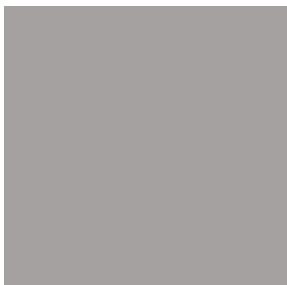
B52 Deep blue



V92 Olive green



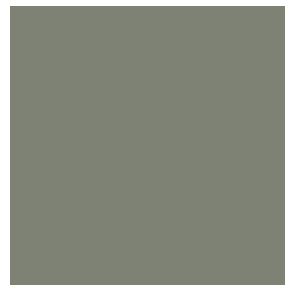
M56 Coffee brown



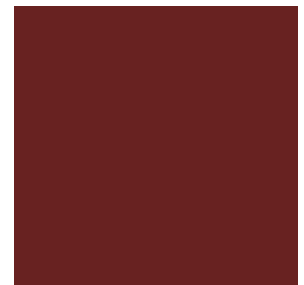
G42 Light grey



B44 Light blue



V74 Sage green



R04 Bordeaux



M82 Stone



M44 Desert brown



M38 Camel



O24 Terracotta



P70 Pink



Y32 Golden ochre

TABLE TOPS - LACQUERED MDF

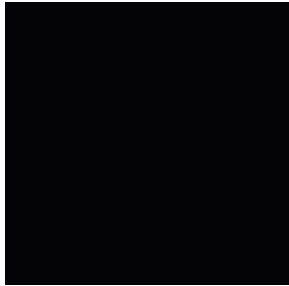
INCLASS

TABLE TOPS

MISCELLANEOUS MATERIALS

PERFECT SENSE

MDF core



Black



Brown



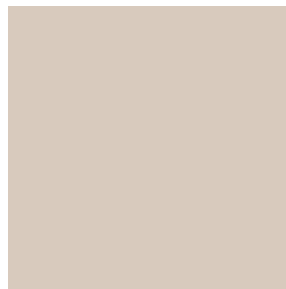
Garnet



Onix



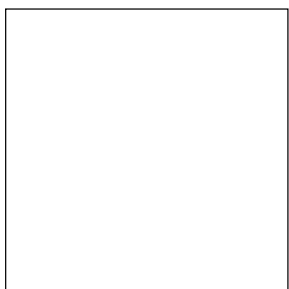
Green



Cashmere

MELAMINE

MDF core



White



Oak

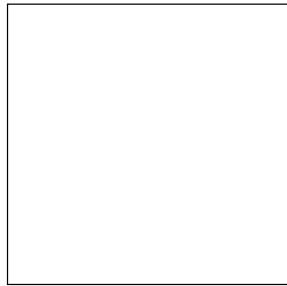


Walut

SOLID HPL
12mm black core



Black



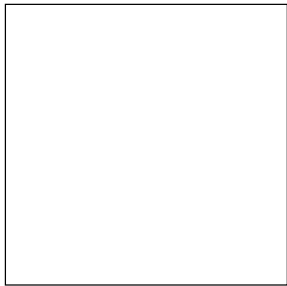
White

SOLID FENIX®
12mm black core



Black

SOLID HPL
12mm white core



White

SOLID HPL
12mm sand core



Sand

SOLID HPL STONES
12mm



Dark brown Samas
3482



Light brown Pulpis
3447



White Olimpo
3493

3.

CARE AND MAINTENANCE

CARE AND MAINTENANCE

METALLIC STRUCTURES

Cleaning can be done with a non-abrasive cloth and one of the following products:

- Neutral soap, moistening the cloth and drying after cleaning.
- Using a solution of 50% water and 50% alcohol.
- With a specific product for metals.

Limescale marks on chrome may be removed by using a 30% vinegar and water solution or with specific cleaning products for chromed surfaces. Dry thoroughly with a dry non abrasive cloth once cleaned.

***Remark:** do not use sponges, fabrics or abrasive objects under any circumstances. Strong, acidic or alkaline cleaners can damage painted metallic surfaces. It is very important to prevent this.

PLASTICS

Plastic surfaces can be cleaned with a non-abrasive cloth, warm water and neutral soap. Alternatively, you may use a solution of 50% water and 50% alcohol or specific cleaning products for plastic surfaces.

UPHOLSTERY

INCLASS offers a broad range of upholstery materials produced by renowned manufacturers.

To clean upholstered furniture, the gentlest product to use is warm water and neutral soap. This method is suitable for all types of fabrics, leathers, and faux leathers.

FABRICS

We recommend cleaning with warm water and neutral soap. To wipe down by hand, use a clean non abrasive cloth, wring well and be careful not to get the upholstery too wet so that moisture does not get into the foam..

Other methods:

- Ethanol-based disinfectants can be used on polyester fabrics without causing damages on the textile or changes in colour. The concentration should be around 75%.

***Remark:** the colour and texture of wool fabrics in some cases could be affected with this method.

- Chlorine-based detergents can also be used on polyester, but it should be avoided on wool fabrics. Concentration should be 1000-1200ppm.

NATURAL LEATHER

We recommend cleaning with a soft sponge or cloth moistened with warm water and neutral soap. Do not wet it excessively. Dry with a cloth once you have finished cleaning.

FAUX LEATHER

We recommend cleaning with a non-abrasive cloth or soft sponge dampened with warm water and neutral soap. Dry thoroughly with a cloth once you have finished cleaning. Avoid harsh detergents as they may cause hydrolysis and surface deterioration.

Please consult the technical data, maintenance and cleaning recommendations indicated by the manufacturers of each fabric in our finishes book for more information.

***Remark:** Injection extraction cleaners and steamers should be avoided, as they may reactivate the adhesive. If you choose to use them, make sure the furniture is not manipulated during 24h so the adhesive can dry completely and the upholstery is not in risk of showing indents.

***Remark:** INCLASS accepts no liability for users' stains or transfer of garment dyes to the furniture's fabric. This may occur especially with white or light coloured fabrics.

WOODEN SURFACES

LACQUERED MDF OR OAK AND WALNUT VENEER

First of all, dust should be removed with a soft cloth or microfibre cloth, avoiding accumulations that could scratch the surface.

For deeper cleaning, we recommend cleaning the surface with a non-abrasive cloth, warm water and neutral soap. Once finished cleaning, we recommend that you dry the surface thoroughly. Alternatively, you may use specific cleaning products for wood surfaces.

FENIX® & HPL

We recommend cleaning the surface with a non-abrasive cloth, warm water and neutral soap. After cleaning, we recommend drying the surface thoroughly.

Non-abrasive household cleaners or solvents can also be used. If the residues are old or hardened, use a magic eraser or soft cloth to remove them. After using the solvent, we recommend washing with warm water and detergent, always making sure to remove all traces of detergent to avoid drying stains.

In case of micro-scratches on FENIX® surfaces, follow the instructions below:

- Place a damp paper towel on the area where the micro-scratches can be seen.
- Apply heat to the surface to be repaired. Do not leave the iron on the part of the surface for more than 10 seconds.
- Rinse the repaired area with warm water and a microfibre cloth.

Maintenance recommendations:

- The surface should never be treated with products containing abrasive substances, micro-abrasive sponges or unsuitable tools such as sandpaper or scouring pads.
- Acids or very alkaline products should be avoided.
- Strong bleaches or chlorine bleaches should be avoided as they may damage the surface. Use sodium hypochlorite in a concentration of less than 5% for a maximum of 5 minutes and then rinse with a sponge or towel.
- Hydrogen peroxide in a concentration of less than 3% should be rinsed carefully. It is recommended to avoid contact for more than 10 minutes for concentrations above 3%, the surface should be thoroughly rinsed with a dry, non-abrasive sponge.
- When solvents are used, the cloth used must be perfectly clean so that it does not leave marks on the surface. However, any marks can be removed by rinsing with hot water and drying.
- Do not use furniture polish or wax-based cleaners in general, as they tend to form a sticky film on the dense surface of FENIX®, to which dirt adheres.
- Do not use metal spatulas, iron brushes or other metal tools to remove stains, paint, plaster or any other substance.

***Remark:** to keep wooden furniture in the best condition, keep it away from water, excess of humidity, intense heat and direct exposure to the sun's rays.

GLIDES

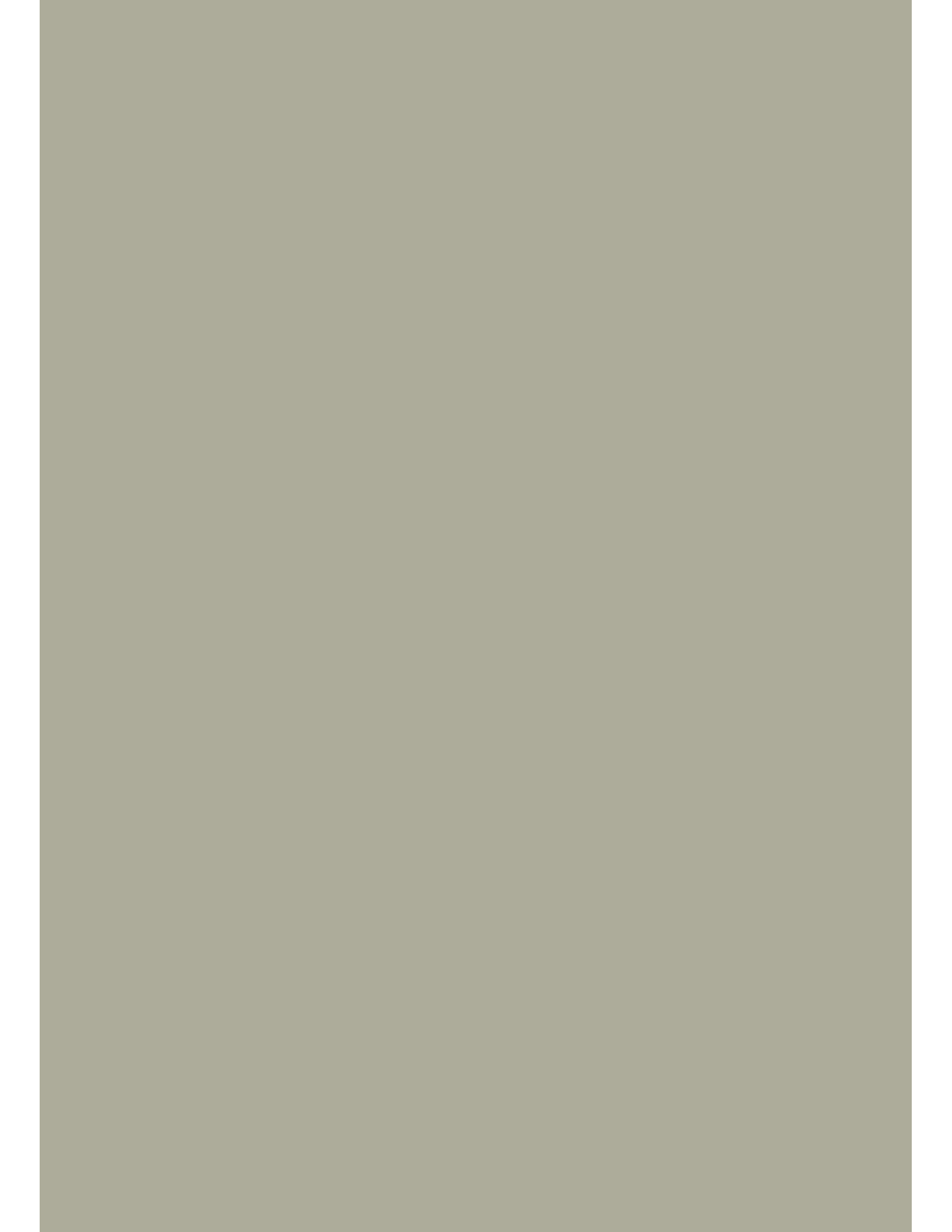
With continued use, the glides of the structures wear out. We recommend periodically checking its status. If they are worn, they must be replaced to avoid damage to the floor. INCLASS products fit standard plastic glides suitable for a wide variety of floor types. As an option, we offer the possibility of equipping your furniture with special glides for specific types of floors. If you have any questions, please ask our Customer Service department to find out the right type of glide suitable for your floor.

CASTERS

With the use, dust and debris may accumulate on your chair casters leading to premature loss of mobility and performance. A regular cleaning and maintenance are needed to prolong the right function of your chair casters.

DISINFECTION

Due to the COVID 19 pandemic, many people wonder how to properly clean their furniture to prevent and avoid the transmission of the virus without damaging its surface materials. In order to inform you, INCLASS has published a disinfection guide with useful tips to disinfect the different surfaces of your furniture. You can consult our disinfection guide in the following [Link](#).



FOLLOW US



CONTACT

INCLASS DESIGNWORKS S.L.
Ctra. de la Estación, s/n
03330 Crevillente, Spain
hello@inclass.es
T. +34 96 540 52 30
F. +34 96 540 64 57
www.inclass.es

INCLASS

www.inclass.es