

# INCLASS



## FINISHES BOOK

Fabrics / Leathers / Materials

We consider the colours and materials as means to express ideas and create emotions as they have the capacity to influence our feelings, perceptions and wellness.

COLOURS CAN DEFINE  
OUR WORLD AND  
CONNECT US WITH THE  
ENVIRONMENT.

This sample book wants to serve as a tool to inspire, communicate and reproduce colours, helping the end user to make their colour ideas come true based on our suggestions.

## COLOURS &amp; FINISHES

# ESSENTIAL ELEMENTS TO EXPRESS A MESSAGE AND CREATE AN ENVIRONMENT.

The extense INCLASS finishes book offers a broad range of materials, finishes and colours. The infinite combinations of materials, colours and textures allow to effectively express the message, the intention and the desired atmosphere for each project.



## INDEX

1. SUGGESTIONS OF COMBINATIONS 638

2. FINISHES 660

Upholstery

Mesh

Metal Paint

Wood

Polypropylene

Rotomolded polyethylene

Table tops

3. CARE AND MAINTENANCE 760

1.

# SUGGESTIONS OF COMBINATIONS

URBAN, SIENA, NATURAL, EARTH, CASUAL

URBAN

Elegant, modern, relaxed  
or dynamic atmosphere.  
Positive attitude, feeling of  
calm and security.

INCLASS

643/643



FINISHES

BOOK

SIENA

Raw, velvety and intense tones that embellish and fill the space with subtle elegance.



INCLASS

646/647



FINISHES

BOOK

NATURAL

Refined, natural and ecological with a slightly warm nuance that transmits peace and tranquility.

INCLASS

650/651



FINISHES

BOOK

EARTH

Connection with nature,  
holistic and harmonious  
lifestyle. Sober, cosy and  
timeless colours.



CASUAL

Quiet, relaxed environments  
away from noise and  
excessive pretensions.



2.

FINISHES



## 2.1. UPHOLSTERY MATERIALS 664

Matrix by collections	668
G1 - Asis	670
G2 - Ars	672
G2 - Nok	674
G2 - Pixel	676
G2 - Cora	678
G2 - Hilton	680
G2 - Addo	682
G2 - Reno	684
G3 - Calma	686
G3 - Rivet	688
G3 - Era	690
G3 - Medley	692
G4 - Main Line Flax	694
G4 - Connect	696
G4 - Valencia	698
G4 - Aspect	700
G4 - Step	702
G5 - Dolce	704
G5 - Synergy	706
G5 - Remix	708
G5 - Canvas	710
G6 - Steelcut Trio	712
G6 - Fiord	714
G7 - Hallingdal	716
G10 - Leather	718
G11 - Leather	720
Mesh	722

## 2.2. METAL PAINT & FINISHES 724

Matrix by collections	726
Sample card	728

## 2.3. WOOD 730

Matrix by collections	732
Veneer / Solid wood	734
Lacquered colours	736

## 2.4. POLYPROPYLENE 738

Matrix by collections	740
PP1 colours	742

## 2.5. ROTOMOLDED POLYETHYLENE 744

Polyethylene colours	746
Lacquered polyethylene colours	748

## 2.6. TABLE TOPS 750

Matrix by collections	752
Wood veneer tops	754
Lacquered tops	756

# UPHOLSTERY FABRICS & LEATHERS

All our upholstered products are locally handcrafted, making each piece unique.

The fabrics and leathers are priced by grades identified by an alpha numerical code: G1/G2/G3/G4/G5/G6/G7/G10/G11/G12

Upon approval, INCLASS products can be upholstered in customer's own fabrics (COM) or in customer's own leathers COL. Not all customer's materials are valid to upholster our products. They must be validated and approved by the INCLASS upholstery department.

- COM textiles will be priced as Grade 2.
- COL leathers will be priced as Grade 3.

All our fabrics and leathers may be purchased separately upon request. Consult our Customer Service for pricing.

The fabrics with stripes or patterns will be applied vertically unless customer specifies other way.

To guarantee a good finish, in some models, a backing must be added to some of the fabrics.

INCLASS offers a broad and selected range of upholsteries produced by top-level companies.

The maintenance, cleaning recommendations and technical data are the ones supplied by the producer for each collection.

Leather is a natural raw material with a non-uniform surface. The leather may show marks such as grain, wrinkles, veins and differences in colour or tone from one batch to another.

The samples in the finishes book are not to be considered a guarantee of perfect homogeneity between the sample and the real supply.

Items upholstered in light colours, especially white, make stains more visible and in many cases such as the dyes of garments impossible to remove. INCLASS shall not accept any liability for these kinds of stains.



# UPHOLSTERY FABRICS & LEATHERS

## COM/COL service

The Customer's Own Material (COM) and Customer's Own Leather (COL) services offers the opportunity for customers to have an INCLASS bespoke product with textiles or leathers especially selected by the customer.

Prior to order placement, if the COM/COL is not found in the INCLASS database of approved fabrics and leathers, a sample cutting of the required COM/COL must be submitted for approval.

If COM has stripes or patterns, the sample should be large enough to show the entire design of the fabric. Customer must identify the name and number of units on which the COM/ COL is to be applied.

Once approved, you can place your order. As soon as we receive and check COM/COL in our factory, our customer service will inform you about the production and delivery schedule.

Even after preliminary approval, INCLASS reserves the right to reject COM/COL if necessary when the quality is not satisfactory for the item it is intended to be used on. Even after preliminary approval, INCLASS assumes no responsibility for its overall appearance, durability or any other quality aspect, after being upholstered on our products. Subject to a specific agreements, INCLASS may buy for the customer the COM/COL materials.

## COM/COL requirements

Each COM/COL must be identified as follows to prevent order delays or material losses:

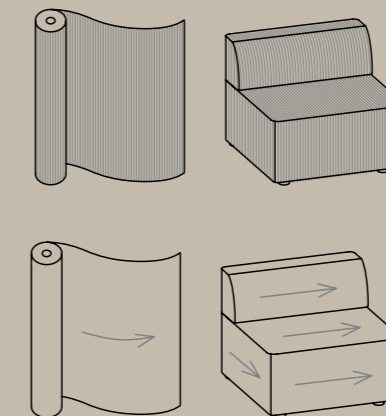
- Customer name and purchase order number.
- Clearly indicate the item to which COM/COL is to be applied
- The name of the fabric supplier. Supplier's fabric name with number and colour.

The COM requirements are based on 1,4 meter width plain material. In some models, the quantity of material needed can be optimized by increasing the units ordered. For this reason, our product sheets indicate the quantities required for orders from 1 to 7 units and for orders of more than 8 units. If you need a more accurate calculation, contact our Customer Service. If the fabric has a design that requires specific positioning or pattern matching, our Customer Service should be consulted for additional material requirement. On these type of fabrics an upcharge will be applied.

COL hides must be sent well packed and rolled in a neat manner avoiding creases and roll marks. The leathers can be rejected if are sent in a folded manner.

To determine COL quantity, see COL requirements for each product. Leather is a natural product with a non-uniform surface due to grain, wrinkles, veins and may present differences in tone from one batch to another. For this reason all square meter requirements are estimations. (COL) Square meter requirements are based on hides with an average size of 4-5 m2 of clean usable leather. If the COL has a smaller average hide size, please consult our Customer Service. The usable surface and the shape of the COL hides supplied can make it necessary for us to request more leather after COL is received.

Excess COM/COL will not be returned with the shipment of furniture and will be disposed of after order is completed unless prior arrangements have been made with our Customer Service.



## Cutting Direction Guidelines

Cutting direction is based on the fabric width and the way the fabric is cut from the roll and applied to products. The INCLASS Upholstered products usually use the vertical direction. The vertical direction is understood as the direction of the unrolling, leaving the selvages on the right and left sides. The fabric is applied as shown in the illustration.

# UPHOLSTERY MATRIX BY COLLECTIONS

LEGEND

- Not available
- Available
- See specifications

	AARHUS	AIR	ALTEA	ANN	ARC	ARUM	ARYN	ARYN MAX	ARYN WOOD	AVALON	BINAR 60	BINAR EXECUTIVE	DIVIDERS / SCREENS	DUNAS LOUNGE	DUNAS XL	DUNAS XS	ENTROPY	ESCALAS	ETNIA	ITEK	ITEK 200	LAPSE	LUND	MARCUS	MILLENIUM	NIM	PAU	PLANIA BENCH	SUN	TAIA	TAO	TEN	TETRIS	UNNIA	UNNIA TAPIZ	VARYA	VARYA TAPIZ	VARYA WOOD									
<b>FABRICS &amp; LEATHERS</b>																																															
G1 - Asis	●	●	●	●	●	●	●	●	●	●	●	●	●	●	●	●	-	●	●	●	●	●	●	-	-	●	●	●	●	●	●	●	●	●	●	●	●	●	●	●							
G2 - Ars	●	●	●	●	●	●	●	●	●	●	●	●	●	●	●	●	●	●	●	●	●	●	●	●	●	●	●	●	●	●	●	●	●	●	●	●	●	●	●	●	●	●					
G2 - Nok	●	●	●	●	●	●	●	●	●	●	●	●	●	●	●	●	●	●	●	●	●	●	●	●	●	●	●	●	●	●	●	●	●	●	●	●	●	●	●	●	●	●					
G2 - Pixel	●	●	●	●	●	●	●	●	●	●	●	●	●	●	●	●	●	●	●	●	●	●	●	●	●	●	●	●	●	●	●	●	●	●	●	●	●	●	●	●	●	●					
G2 - Cora	●	●	●	●	●	●	●	●	●	●	●	●	●	●	●	●	●	●	●	●	●	●	●	●	●	●	●	●	●	●	●	●	●	●	●	●	●	●	●	●	●	●					
G2 - Hilton	●	●	●	●	●	●	●	●	●	●	●	●	●	●	●	●	●	●	●	●	●	●	●	●	●	●	●	●	●	●	●	●	●	●	●	●	●	●	●	●	●	●					
G2 - Addo	●	●	●	●	●	●	●	●	●	●	●	●	●	●	●	●	●	●	●	●	●	●	●	●	●	●	●	●	●	●	●	●	●	●	●	●	●	●	●	●	●	●					
G2 - Reno	●	●	●	●	●	●	●	●	●	●	●	●	●	●	●	●	●	●	●	●	●	●	●	●	●	●	●	●	●	●	●	●	●	●	●	●	●	●	●	●	●	●	●				
G3 - Calma	●	●	●	●	●	●	●	●	●	●	●	●	●	●	●	●	●	●	●	●	●	●	●	●	●	●	●	●	●	●	●	●	●	●	●	●	●	●	●	●	●	●	●				
G3 - Rivet	●	●	●	●	●	●	●	●	●	●	●	●	●	●	●	●	●	●	●	●	●	●	●	●	●	●	●	●	●	●	●	●	●	●	●	●	●	●	●	●	●	●	●				
G3 - Era	●	●	●	●	●	●	●	●	●	●	●	●	●	●	●	●	●	●	●	●	●	●	●	●	●	●	●	●	●	●	●	●	●	●	●	●	●	●	●	●	●	●	●	●			
G3 - Medley	●	●	●	●	●	●	●	●	●	●	●	●	●	●	●	●	●	●	●	●	●	●	●	●	●	●	●	●	●	●	●	●	●	●	●	●	●	●	●	●	●	●	●	●			
G4 - Main Line Flax	●	●	●	●	●	●	●	●	●	●	●	●	●	●	●	●	●	●	●	●	●	●	●	●	●	●	●	●	●	●	●	●	●	●	●	●	●	●	●	●	●	●	●	●			
G4 - Connect	●	●	●	●	●	●	●	●	●	●	●	●	●	●	●	●	●	●	●	●	●	●	●	●	●	●	●	●	●	●	●	●	●	●	●	●	●	●	●	●	●	●	●	●	●		
G4 - Aspect	●	●	●	●	●	●	●	●	●	●	●	●	●	●	●	●	●	●	●	●	●	●	●	●	●	●	●	●	●	●	●	●	●	●	●	●	●	●	●	●	●	●	●	●	●		
G4 - Step	●	●	●	●	●	●	●	●	●	●	●	●	●	●	●	●	●	●	●	●	●	●	●	●	●	●	●	●	●	●	●	●	●	●	●	●	●	●	●	●	●	●	●	●	●		
G4 - Valencia	●	●	●	●	●	●	●	●	●	●	●	●	●	●	●	●	●	●	●	●	●	●	●	●	●	●	●	●	●	●	●	●	●	●	●	●	●	●	●	●	●	●	●	●	●		
G5 - Dolce	●	●	●	●	●	●	●	●	●	●	●	●	●	●	●	●	●	●	●	●	●	●	●	●	●	●	●	●	●	●	●	●	●	●	●	●	●	●	●	●	●	●	●	●	●	●	
G5 - Synergy	●	●	●	●	●	●	●	●	●	●	●	●	●	●	●	●	●	●	●	●	●	●	●	●	●	●	●	●	●	●	●	●	●	●	●	●	●	●	●	●	●	●	●	●	●	●	
G5 - Remix	●	●	●	●	●	●	●	●	●	●	●	●	●	●	●	●	●	●	●	●	●	●	●	●	●	●	●	●	●	●	●	●	●	●	●	●	●	●	●	●	●	●	●	●	●	●	
G5 - Canvas	●	●	●	●	●	●	●	●	●	●	●	●	●	●	●	●	●	●	●	●	●	●	●	●	●	●	●	●	●	●	●	●	●	●	●	●	●	●	●	●	●	●	●	●	●	●	●
G6 - SteelCut Trio	●	●	●	●	●	●	●	●	●	●	●	●	●	●	●	●	●	●	●	●	●	●	●	●	●	●	●	●	●	●	●	●	●	●	●	●	●	●	●	●	●	●	●	●	●	●	●
G6 - Fiord	●	●	●	●	●	●	●	●	●	●	●	●	●	●	●	●	●	●	●	●	●	●	●	●	●	●	●	●	●	●	●	●	●	●	●	●	●	●	●	●	●	●	●	●	●	●	●
G7 - Hallingdal	●	●	●	●	●	●	●	●	●	●	●	●	●	●	●	●	●	●	●	●	●	●	●	●	●	●	●	●	●	●	●	●	●	●	●	●	●	●	●	●	●	●	●	●	●	●	●
G10 - Leather	●	●	●	●	●	●	●	●	●	●	●	●	-	●	●	●	○	○	●	●	●	●	●	●	●	●	●	○	●	●	●	●	●	●	●	○	●	●	●	●	●	●	●	●	●	●	
G11 - Leather	●	●	●	●	●	●	●	●	●	●	●	●	-	●	●	●	○	○	●	●	●	●	●	●	●	●	●	○	●	●	●	●	●	○	●	●	●	●	●	●	●	●	●	●	●	●	
Mesh	-	●	-	-	-	-	-	-	-	-	-	-	-	-	-	-	-	-	-	●	-	-	-	-	-	-	-	-	-	-	-	-	-	-	-	-	-	-	-	-	-	-	-	-	-	-	

# G1 - ASIS <sup>NEW</sup>

## TECHNICAL DATA

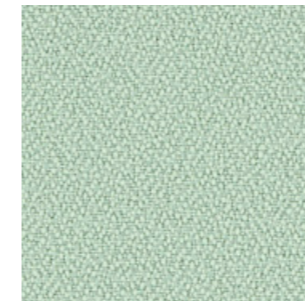
- Composition:**  
100% polyester.
- Light fastness:**  
5 - 6, ISO 105 B02, Method 2.
- Abrasion:**  
100.000 Martindale EN ISO 12947-2.
- Resistance to pilling:**  
4 - 5, ISO 12945-2:002.
- Rubbing fastness in humid state:**  
4, ISO 105-X12.
- Rubbing solvents:**  
4, ISO 105-X12.
- Tear strength:**  
Warp 140N.  
Weft 110N, EN ISO 13937-3.
- Flammability:**  
EN 1021 - 1/2.  
BS 5852 0.  
BS 7176 Low Hazard.  
CAL TB 117 Section 1.  
NFFPA 260 Class 1.  
Regulation n° 118 UNECE Annexed 6.  
IMO MSC.307 (88) Annexed I Part 8.

**Width:** 140cm  
**Weight:** 335gr/m<sup>2</sup>

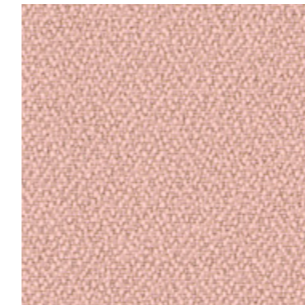


\*\*\*Batch to batch variations may occur within commercial tolerances.

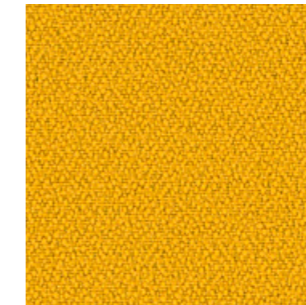
Note:  
- The real colours and tones of the fabrics may differ from the digital image due to the scan process and the colour calibration of the different screens. Always request real fabric samples before ordering.  
- Consult our Fabric and Leather Matrix to know about the availability of this material by product line.



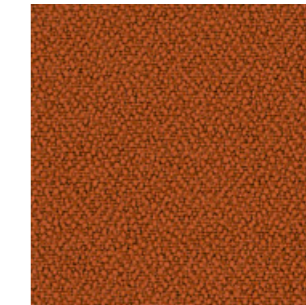
198



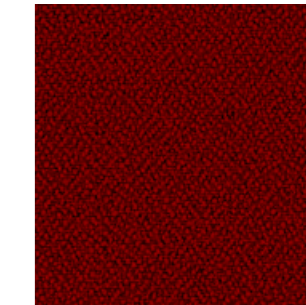
315



88



122



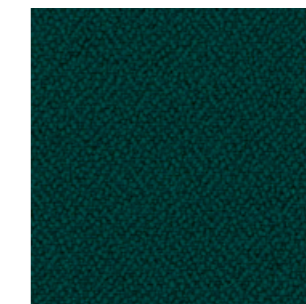
4011



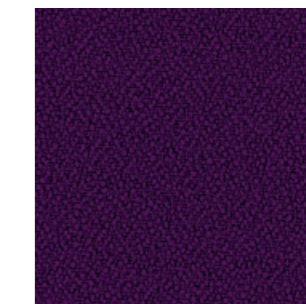
422



77



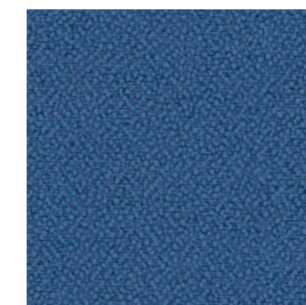
47



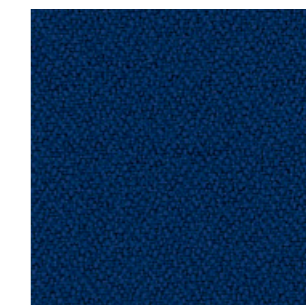
292



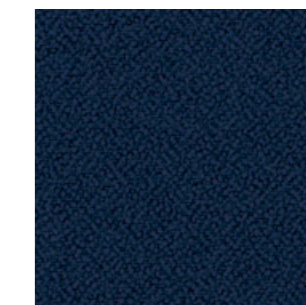
86



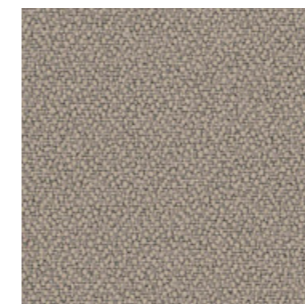
4



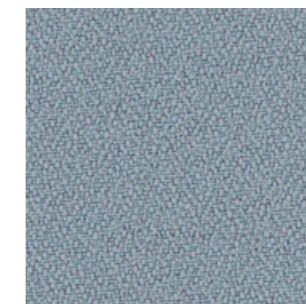
5



26



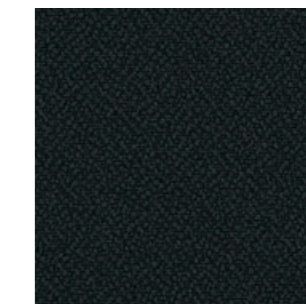
132



170



108



9

# G2 - ARS<sup>NEW</sup>

## TECHNICAL DATA

- Composition:**  
100% polyester.
- Light fastness:**  
5, ISO 105 B02, Method 2.
- Abrasion:**  
90.000 Martindale EN ISO 12947-2.
- Resistance to pilling:**  
4 - 5, ISO 12945-2:002.
- Rubbing fastness in humid state:**  
5, ISO 105-X12:2001.
- Rubbing solvents:**  
4 - 5, ISO 105-X12:2001.
- Seam strength:**  
Warp 3,7mm.  
Weft 0,2mm, EN ISO 13936-2.
- Seam strength:**  
Warp 75,6N.  
Weft 65,1N, EN ISO 13937-3.
- Flammability:**  
EN 1021 - 1 (cigarette).
- Environment:**  
OEKO-TEX® Standard 100.

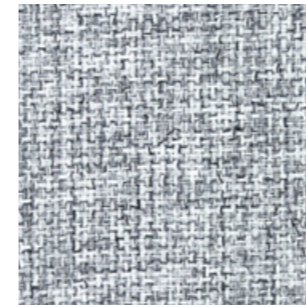
**Width:** 140cm  
**Weight:** 250gr/m<sup>2</sup>



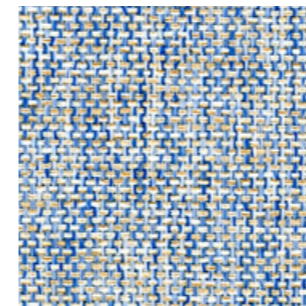
\*\*\*Batch to batch variations may occur within commercial tolerances.



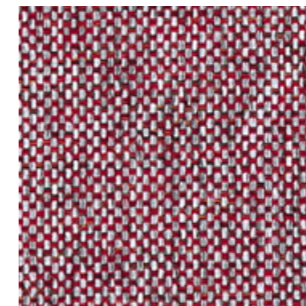
Note:  
- The real colours and tones of the fabrics may differ from the digital image due to the scan process and the colour calibration of the different screens. Always request real fabric samples before ordering.  
- Consult our Fabric and Leather Matrix to know about the availability of this material by product line.



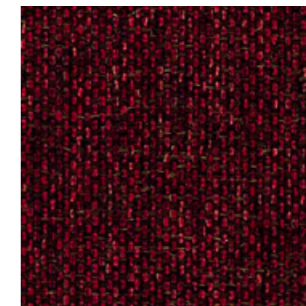
90



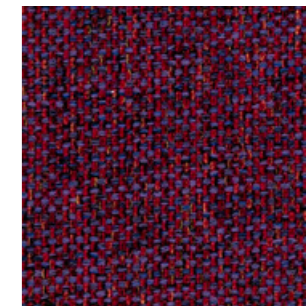
74



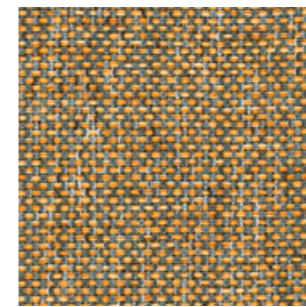
27



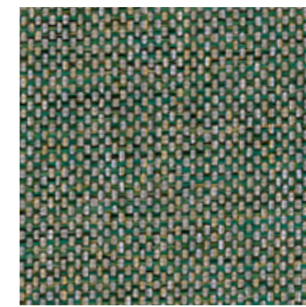
59



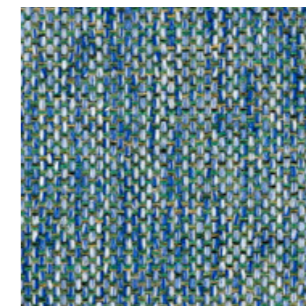
68



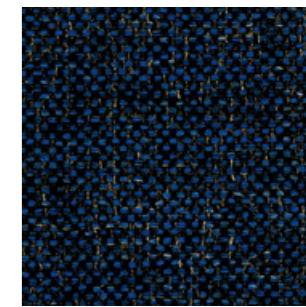
45



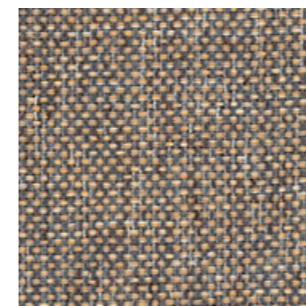
35



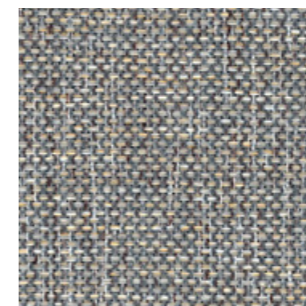
75



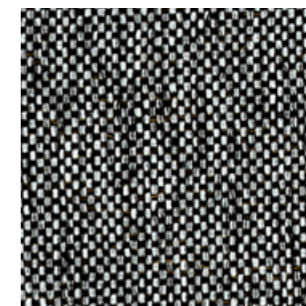
79



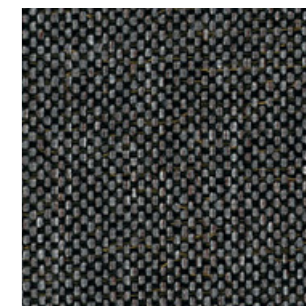
87



88



98



99

# G2 - NOK <sup>NEW</sup>

## TECHNICAL DATA

**Composition:**

100% polyester.

**Light fastness:**

4 - 5, EN ISO 105 B02, Method 2.

**Abrasion:**

45.000 Martindale EN ISO 12947-2.

**Resistance to pilling:**

4 - 5, EN ISO 12945-2:2002.

**Rubbing fastness in humid state:**

4 - 5, ISO 105-X12:2001.

**Rubbing solvents:**

4 - 5, ISO 105-X12:2001.

**Seam strength:**

Warp 4,0mm.

Weft 3,8mm, EN ISO 13936-2.

**Tear strength:**

Warp exceed 68,8N.

Weft exceed 68,8N, EN ISO 13937-3.

**Flammability:**

EN 1021 - 1 (cigarette).

BS 5852: Part 1: 1979, Ignition source 0

BS 5852: Part 1: 1979, Ignition source 1.

**Environment:**

OEKO-TEX® Standard 100.

**Width:** 140cm

**Weight:** 330gr/m<sup>2</sup>



\*\*\*Batch to batch variations may occur within commercial tolerances.



**Note:**

- The real colours and tones of the fabrics may differ from the digital image due to the scan process and the colour calibration of the different screens. Always request real fabric samples before ordering.

- Consult our Fabric and Leather Matrix to know about the availability of this material by product line.



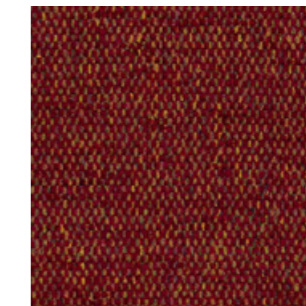
2



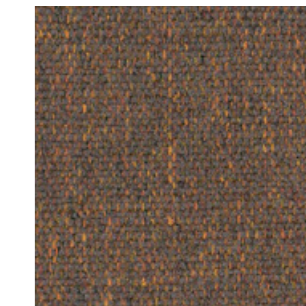
6



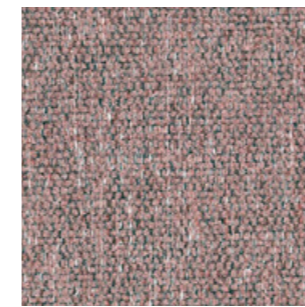
45



59



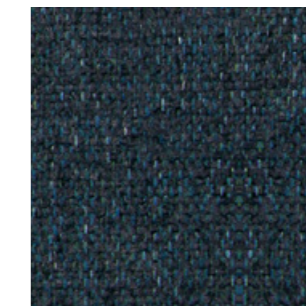
56



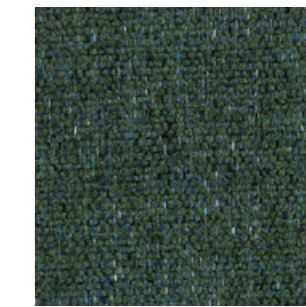
61



69



79



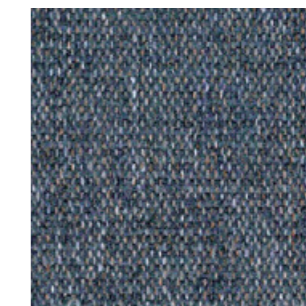
39



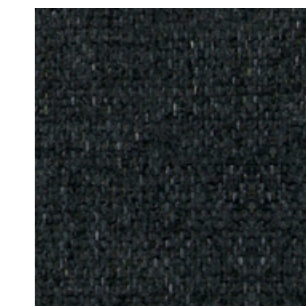
81



90



95



99

# G2 - PIXEL

## TECHNICAL DATA

**Composition:**

100% polyolefin.

**Light fastness:**

5 - 6, UNE-EN ISO 105-B02:2001 +A1:2002. Method 2.

**Abrasion:**

40.000 Martindale EN ISO 14465:2004.

**Resistance to pilling:**

4 - 5, UNE-EN 14465:2004.

**Dye fastness to rubbing:**

Wet 4 - 5.

Dry 4 - 5, UNE-EN ISO 105-X12:2003.

**Tear Resistance:**

Warp 120N.

Weft 130N UNE-EN ISO 13937-3:2001.

**Flammability:**

EN 1021-1:2015 (cigarette)

BS 5852:2006 (cigarette)

DIN 66084:2003-7 classification P- c

CAL TB 117:2013 Section 1: COVER FABRIC TEST NFPA 260:2013 CLASS 1.

**Width:** 140cm

**Weight:** 255gr/m<sup>2</sup>



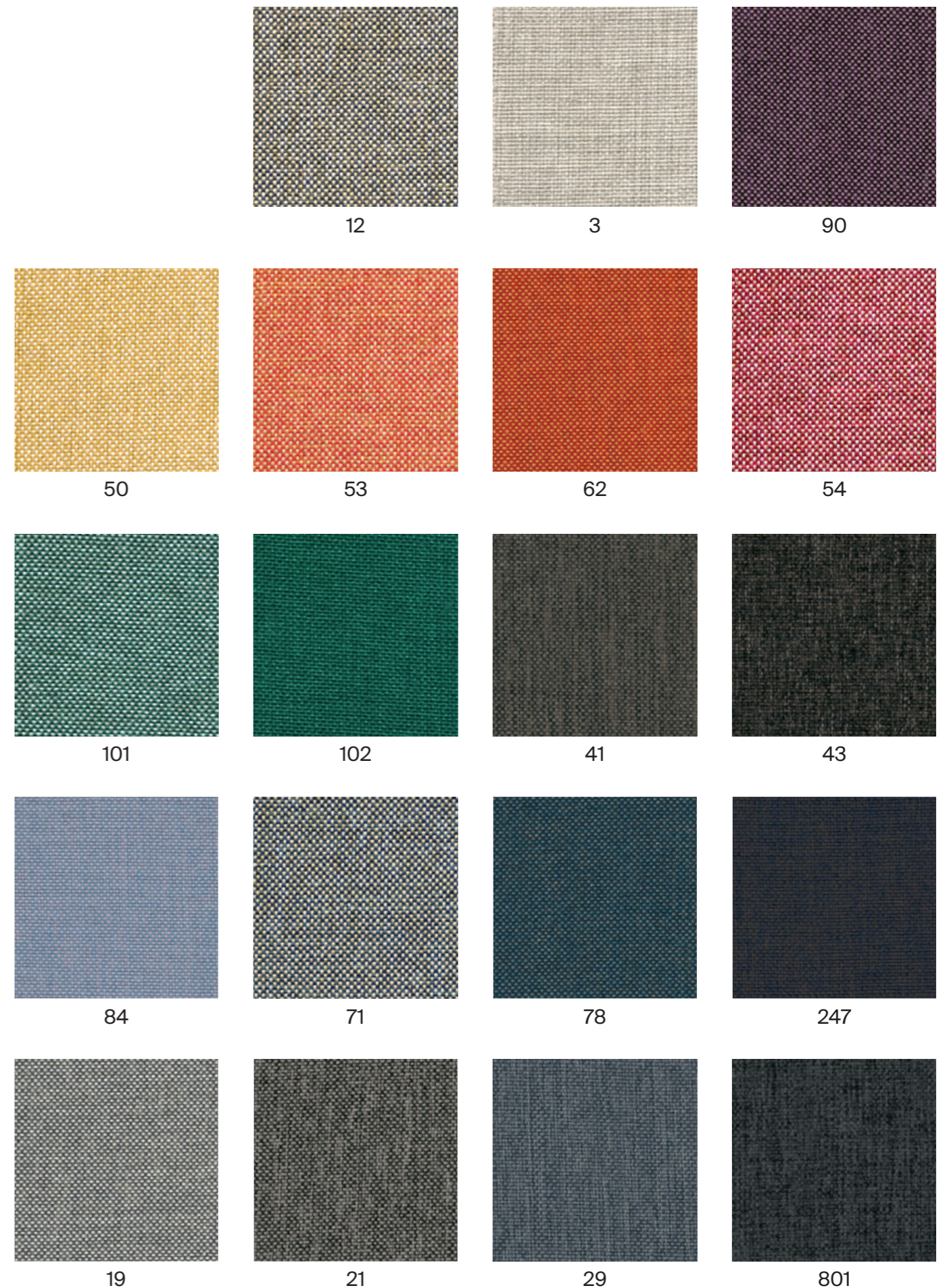
\*\*\*Batch to batch variations may occur within commercial tolerances.



**Note:**

- The real colours and tones of the fabrics may differ from the digital image due to the scan process and the colour calibration of the different screens. Always request real fabric samples before ordering.

- Consult our Fabric and Leather Matrix to know about the availability of this material by product line.





# G2 - CORA

## TECHNICAL DATA

- Composition:**  
100% polyester.
- Light fastness:**  
5 EN ISO 105-B02, Method 2.
- Abrasion:**  
83.000 Martindale EN ISO 12947-1, 2.
- Resistance to pilling:**  
4, EN ISO 12945-2:2002.
- Rubbing fastness in humid state:**  
5, ISO 105-X12:2001.
- Rubbing solvents:**  
5, ISO 105-X12:2001.
- Seam strength:**  
Warp 2,5mm.  
Weft 3,7mm, ISO 13936-2.
- Tear strength:**  
Warp exceed 154,2N.  
Weft exceed 112,3N, EN ISO 13937-3.

**Width:** 140cm  
**Weight:** 330gr/m<sup>2</sup>



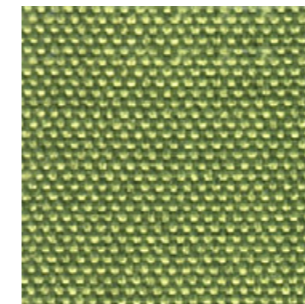
\*\*\*Batch to batch variations may occur within commercial tolerances.



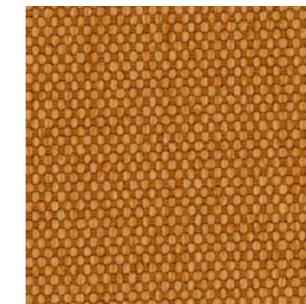
Note:  
- The real colours and tones of the fabrics may differ from the digital image due to the scan process and the colour calibration of the different screens. Always request real fabric samples before ordering.  
- Consult our Fabric and Leather Matrix to know about the availability of this material by product line.



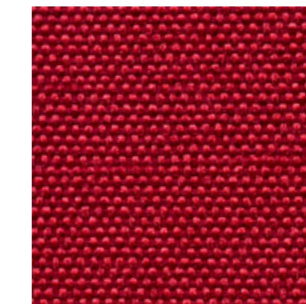
21



32



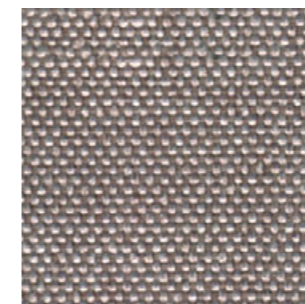
48



60



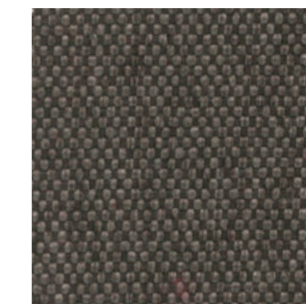
65



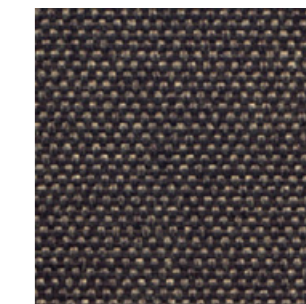
12



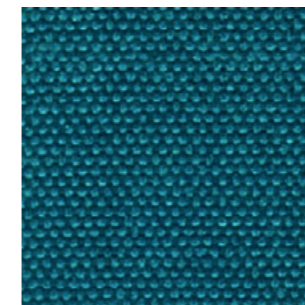
40



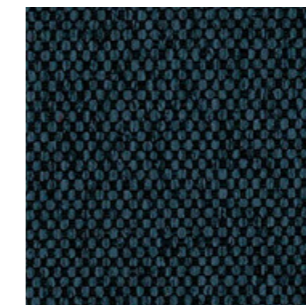
115



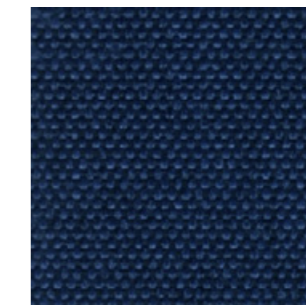
27



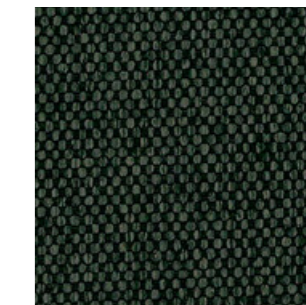
17



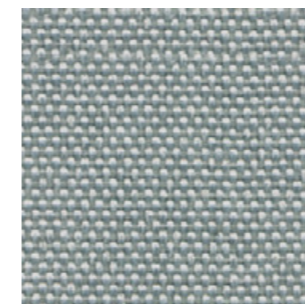
37



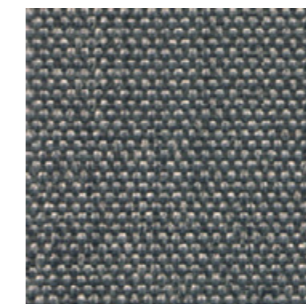
18



38



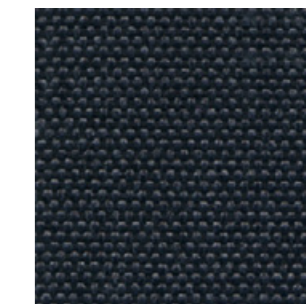
3



14



20



2

# G2 - HILTON

## TECHNICAL DATA

**Composition:**  
100% polyester.

**Light fastness:**  
4, ISO 105 B02:1994.

**Abrasion:**  
>25.000 Martindale ISO 12947-2:1998.

**Resistance to pilling:**  
4 - 5, ISO 12945-2.

**Tear strength:**  
Warp 63N.  
Weft 63N, ISO13937-3:2000.

**Dye fastness to rubbing:**  
Wet 4 - 5. Dry 4 - 5, ISO 105X12:2001.

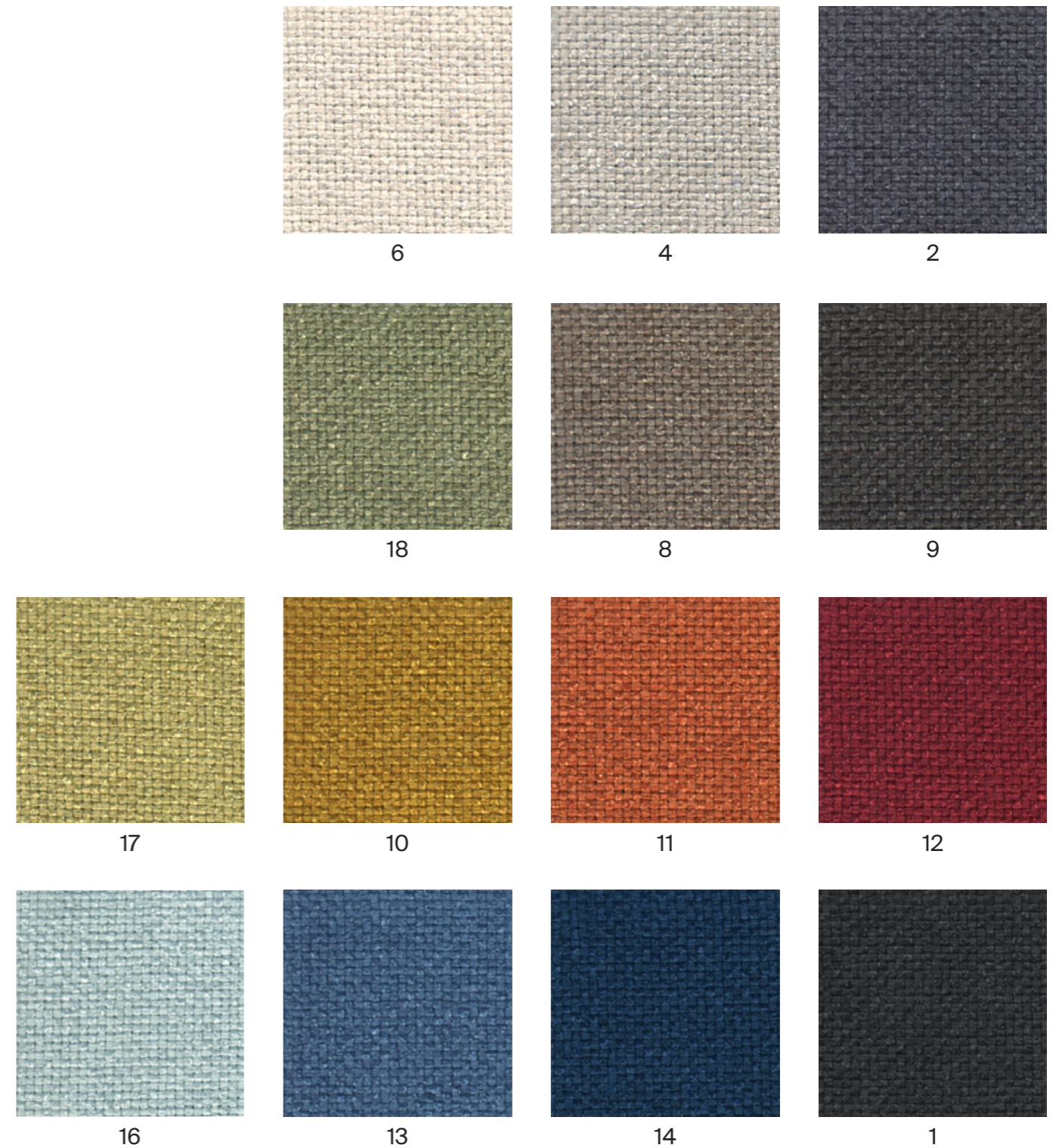
**Width:** 140cm  
**Weight:** 380gr/m<sup>2</sup>



\*\*\*Batch to batch variations may occur within commercial tolerances.



Note:  
- The real colours and tones of the fabrics may differ from the digital image due to the scan process and the colour calibration of the different screens. Always request real fabric samples before ordering.  
- Consult our Fabric and Leather Matrix to know about the availability of this material by product line.



# G2 - ADDO

## TECHNICAL DATA

### Composition:

80% polyester, 20% cotton.

### Light fastness:

5, ISO 105 B02, Method 2.

### Abrasion:

40.000 Martindale ISO 12947-1, 2.

### Resistance to pilling:

4, ISO 12945-2:002.

### Rubbing fastness in humid state:

3, ISO 105-X12:2001.

### Rubbing solvents:

4 - 5, ISO 105-X12:2001.

### Seam strength:

Warp 3mm.

Weft 2mm, ISO 13936-2.

### Tear strength:

Warp exceed 175,1N.

Weft exceed 120,7N, EN ISO 13937-3.

### Flammability:

EN 1021 - 1 (cigarette).

Width: 140cm

Weight: 365gr/m<sup>2</sup>

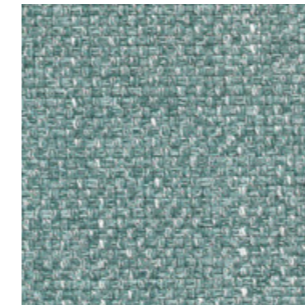


\*\*\*Batch to batch variations may occur within commercial tolerances.

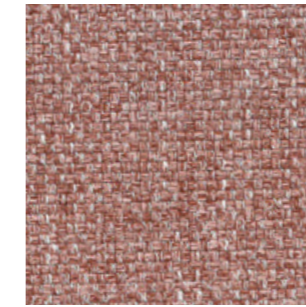


### Note:

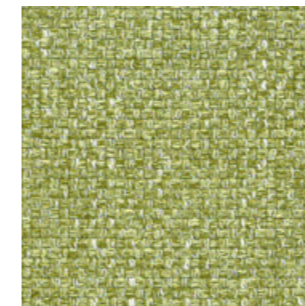
- The real colours and tones of the fabrics may differ from the digital image due to the scan process and the colour calibration of the different screens. Always request real fabric samples before ordering.
- Consult our Fabric and Leather Matrix to know about the availability of this material by product line.



12



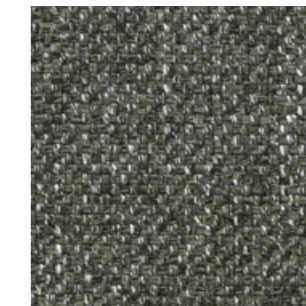
10



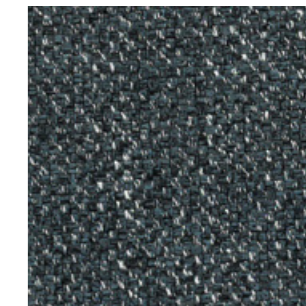
14



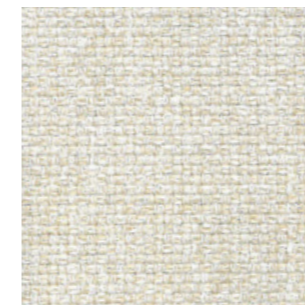
15



16



11



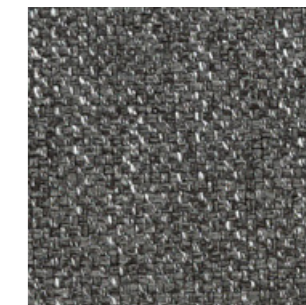
5



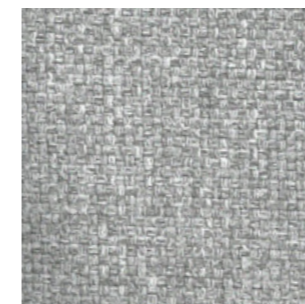
6



7



8



4



3



30



1

# G2 - RENO

## TECHNICAL DATA

**Composition:**  
100% P.V.C.

**Light fastness:**  
6 - 7, ISO 105 B02.

**Abrasion:**  
>45.000 Martindale EN ISO 12947.

**Breaking strength:**  
Warp 360.  
Weft 150 EN ISO 13934-1  
UNE-EN ISO 1421.

**Tear strength:**  
Warp 23.  
Weft 26 EN ISO 13937-3.

**Resistance to pilling:**  
5, ISO 12945-2:2000.

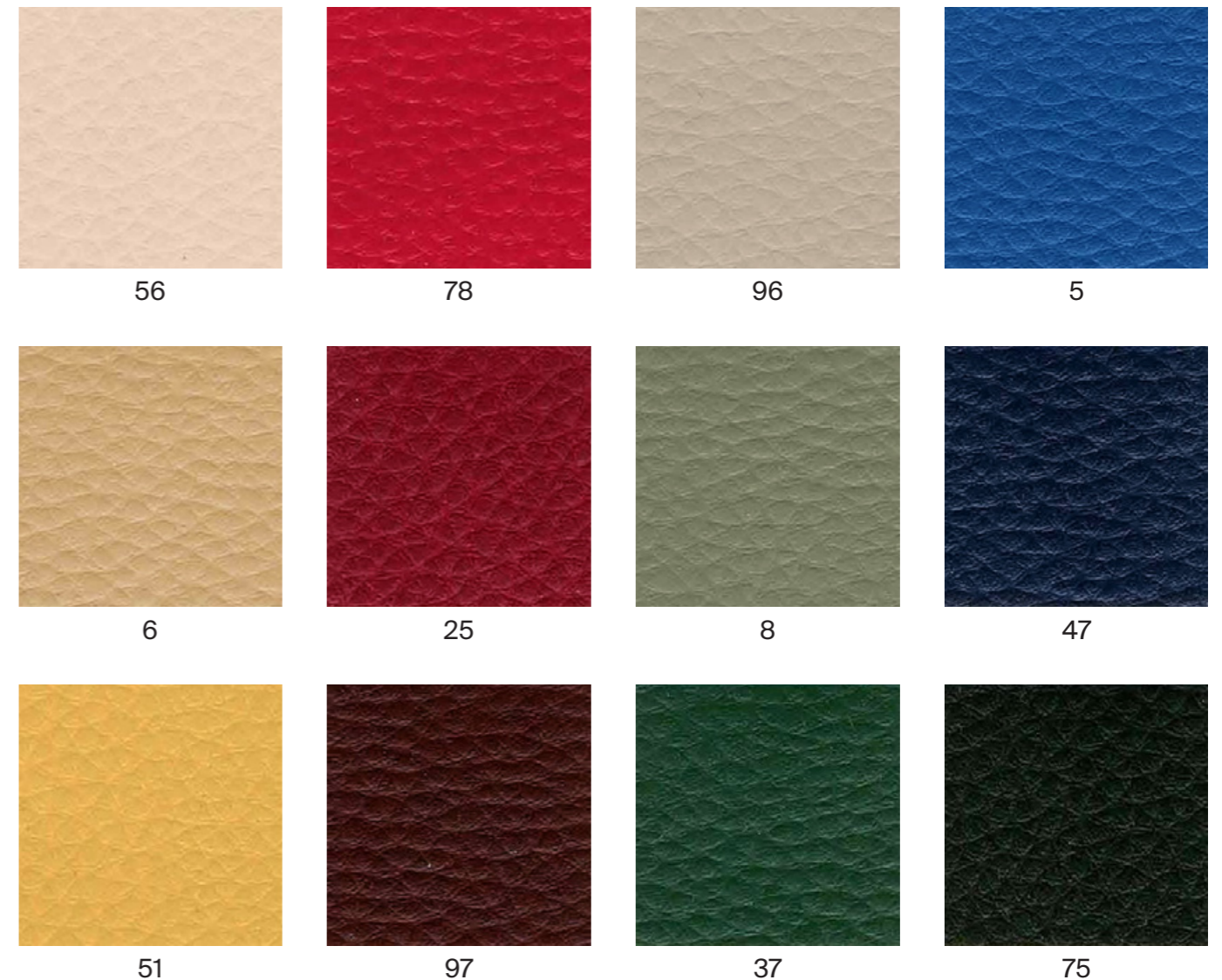
**Fastness to rubbing:**  
Wet 4 - 5.  
Dry 4 - 5, ISO 105 X12.

**Width:** 140cm  
**Weight:** 540gr/m<sup>2</sup>



\*\*\*Batch to batch variations may occur within commercial tolerances.

Note:  
- The real colours and tones of the fabrics may differ from the digital image due to the scan process and the colour calibration of the different screens. Always request real fabric samples before ordering.  
- Consult our Fabric and Leather Matrix to know about the availability of this material by product line.



# G3 - CALMA <sup>NEW</sup>

## TECHNICAL DATA

**Composition:**  
 Topcoat: 70% Vinyl, 30% PU.  
 Backing: 100% Microfiber Polyester.

**Light fastness:**  
 >4.

**Abrasion:**  
 >100.000 Martindale.

**Breaking strength:**  
 Warp >180N.  
 Weft >330N, ISO 1421.

**Tear strength:**  
 Warp >25N/cm.  
 Weft >28N/cm, ISO 4674-1.

**Flex Bally:**  
 >100.000 cycles.

**Width:** 140cm.

**Weight:** 853gr/m<sup>2</sup>.



\*\*\*Batch to batch variations may occur within commercial tolerances.

Note:  
 - The real colours and tones of the fabrics may differ from the digital image due to the scan process and the colour calibration of the different screens. Always request real fabric samples before ordering.  
 - Consult our Fabric and Leather Matrix to know about the availability of this material by product line.



# G3 - RIVET <sup>NEW</sup>

By Camira

## TECHNICAL DATA

**Composition:**

100% REPREVE® recycled polyester.

**Light fastness:**

6, EN ISO 105-B02: 2014, Method 3.

**Abrasion:**

≥80.000 Martindale EN ISO 12947-2: 2016

**Fastness to rubbing:**

Wet 4.

Dry 4, ISO 105 X12.

**Flammability:**

EN 1021 - 1 (cigarette).

EN 1021 - 2 (match).

BS 7176 Low Hazard.

UNI 9175 Class 1 IM.

**Environment:**

Complies with EU Ecolabel.

Certificate Indoor Advantage™ Gold.

**Width:** 140cm

**Weight:** 280gr/m<sup>2</sup>



\*\*\*Batch to batch variations may occur within commercial tolerances.

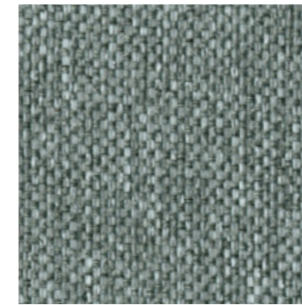


**100%**  
recycled material  
Post Consumer  
Recycled  
Polyester

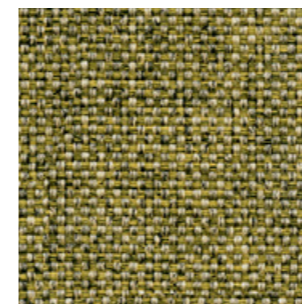
**Note:**

- The real colours and tones of the fabrics may differ from the digital image due to the scan process and the colour calibration of the different screens. Always request real fabric samples before ordering.

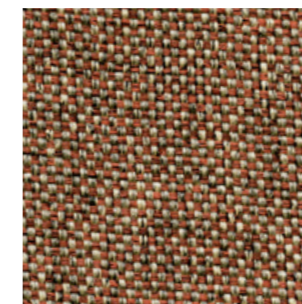
- Consult our Fabric and Leather Matrix to know about the availability of this material by product line.



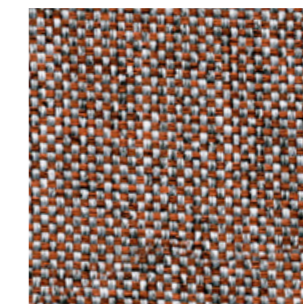
26



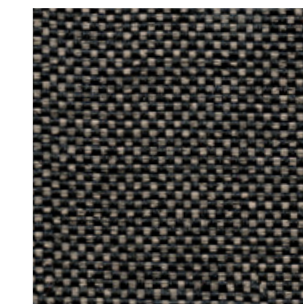
10



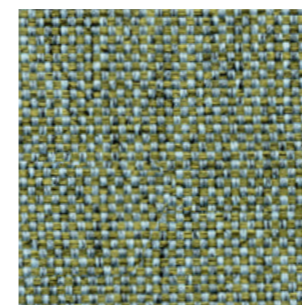
14



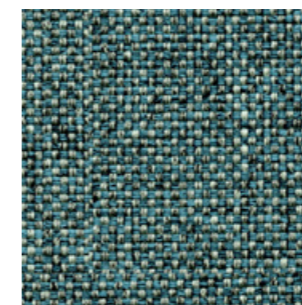
09



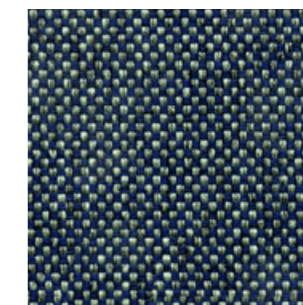
36



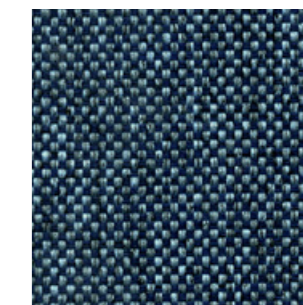
11



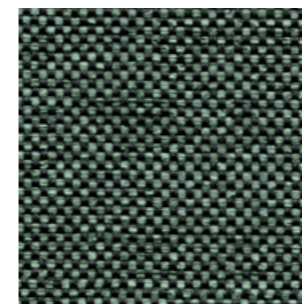
21



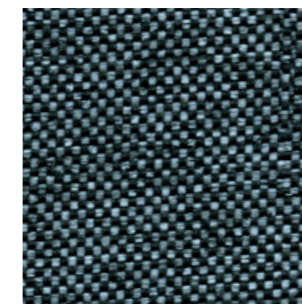
27



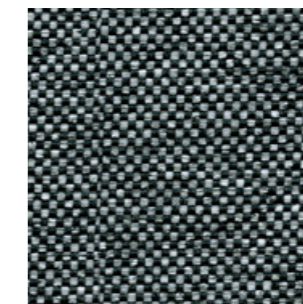
24



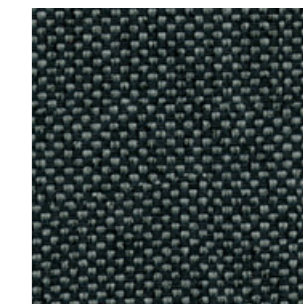
34



48



50



37

# G3 - ERA <sup>NEW</sup>

By Camira

## TECHNICAL DATA

**Composition:**

100% polyester.

**Light fastness:**

5, EN ISO 105 B02.

**Abrasion:**

≥100.000 Martindale EN ISO 12947.

**Fastness to rubbing:**

Wet 4.

Dry 4, ISO 105 X12.

**Flammability:**

EN 1021 - 1 (cigarette).

EN 1021 - 2 (match).

BS 7176 Low Hazard.

EN 13501-1 Adhered Class B, s1, d0.

EN 13501-1 Un-adhered Class C, s1, d0.

**Environment:**

OEKO-TEX® Standard 100.

Certificate Indoor Advantage™ Gold.

**Width:** 140cm

**Weight:** 320gr/m<sup>2</sup>



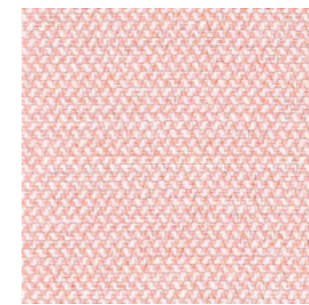
\*\*\*Batch to batch variations may occur within commercial tolerances.



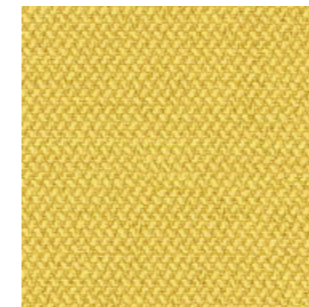
**Note:**

- The real colours and tones of the fabrics may differ from the digital image due to the scan process and the colour calibration of the different screens. Always request real fabric samples before ordering.

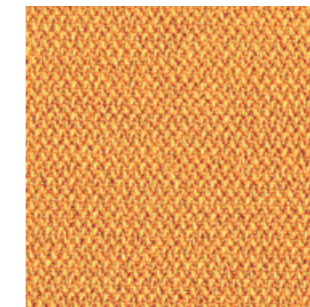
- Consult our Fabric and Leather Matrix to know about the availability of this material by product line.



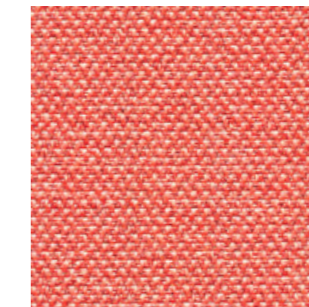
19



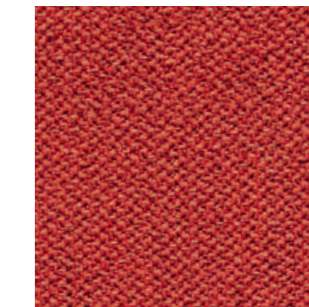
3



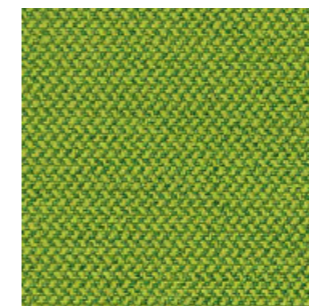
27



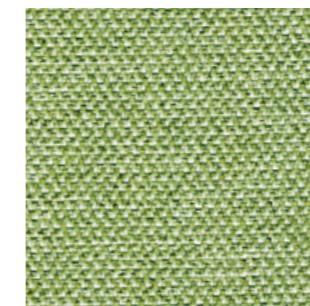
26



29



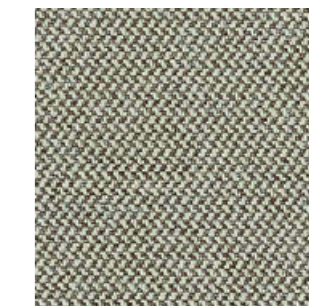
16



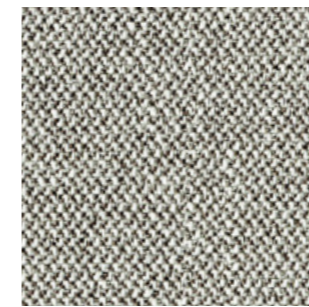
34



1



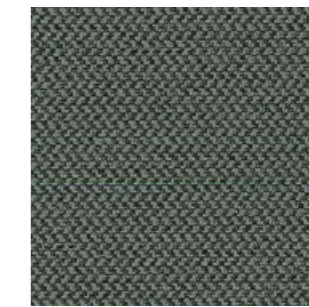
2



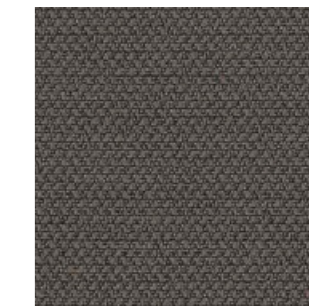
45



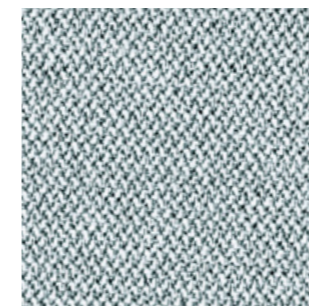
11



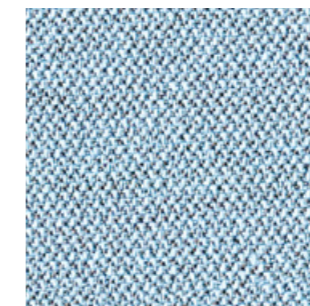
13



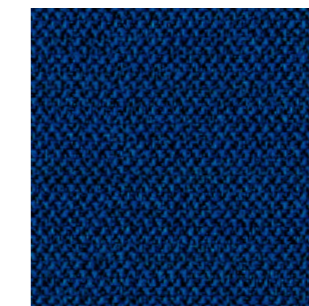
21



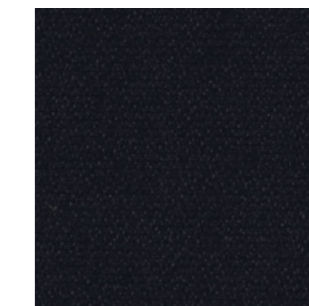
46



39



40



14

# G3 - MEDLEY

By Gabriel

## TECHNICAL DATA

**Composition:**

100% polyester.

**Light fastness:**

5 - 7, EN ISO 105 B02.

**Abrasion:**

75.000 Martindale EN ISO 12947-2.

**Resistance to pilling:**

4, EN ISO 12945-2.

**Fastness to rubbing:**

Wet 4 - 5.

Dry 4 - 5, ISO 105 X12.

**Flammability:**

BS EN 1021 1&2 Cigarette and Match.

BS EN 1021-1 Cigarette.

BS 5852 Part 1 0,1 Cigarette and Match.

BS 476 Part 7, class 2.

Class Uno UNI 9174 - UNI 8457.

ÖNORM B 3825-B2-3800-Q1 UK.

CA TB 117-2013

ASTM E 84.

**Environment:**

Oeko-Tex® standard 100

100% free of heavy metals.

**Width:** 140cm

**Weight:** 510gr/m<sup>2</sup>



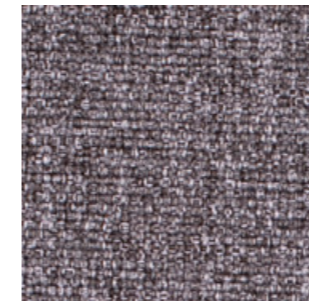
\*\*\*Batch to batch variations may occur within commercial tolerances.



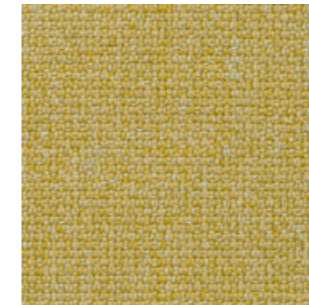
**Note:**

- The real colours and tones of the fabrics may differ from the digital image due to the scan process and the colour calibration of the different screens. Always request real fabric samples before ordering.

- Consult our Fabric and Leather Matrix to know about the availability of this material by product line.



65011



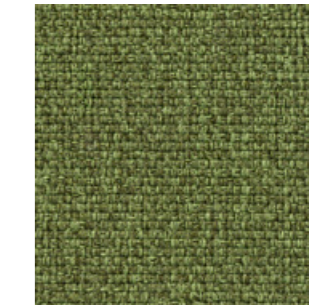
62054



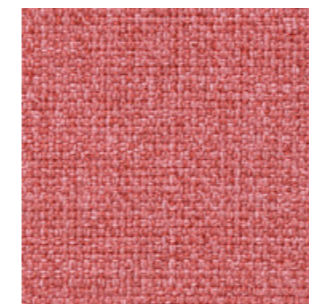
61003



67002



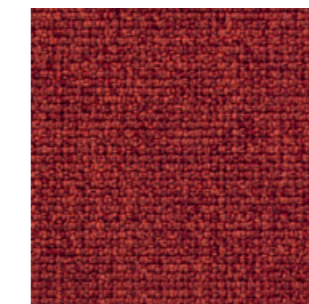
68005



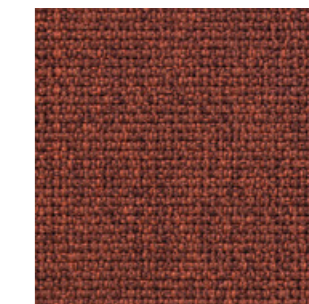
63064



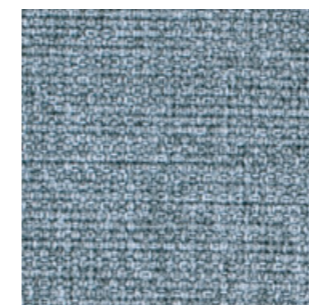
64019



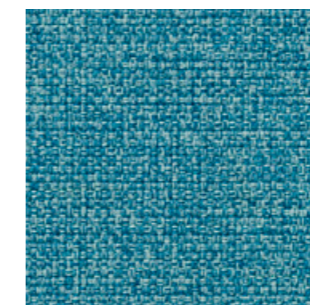
63016



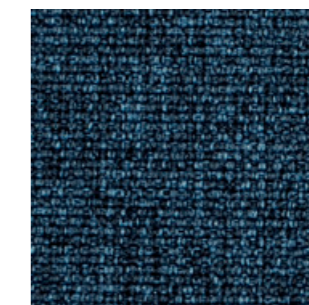
63063



66008



67006



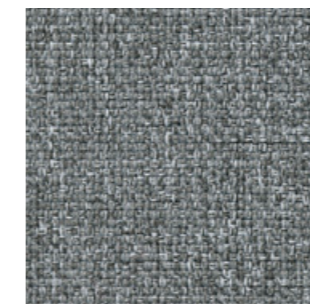
66010



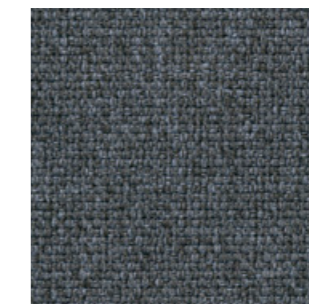
61004



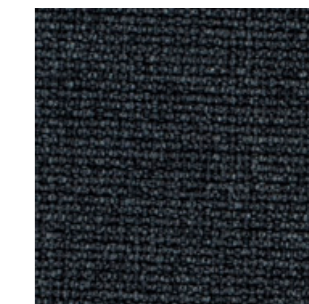
60003



60167



60004



60999



# G4 - MAIN LINE FLAX <sup>NEW</sup>

By Camira

## TECHNICAL DATA

**Composition:**

75% virgin wool, 25% flax.

**Light fastness:**

5, ISO 105 B02.

**Abrasion:**

≥50.000 Martindale EN ISO 12947-2:1999.

**Resistance to pilling:**

4 - 5, ISO 12945-2.

**Fastness to rubbing:**

Wet 3.

Dry 4, ISO 105 X12.

**Flammability:**

EN 1021 - 1 (cigarette).

EN 1021 - 2 (match).

BS 7176 Low Hazard.

BS 5852 Ignition source 5.

BS 7176 Medium Hazard.

NF D 60-013.

ÖNORM B 3825 & A 3800-1.

UNI 9175 Class 1 IM.

BS 5867-2: Type B Curtains & Drapes.

IMO FTP Code (Part 8).

**Environment:**

Complies with EU Ecolabel.

Certificate Indoor Advantage™ Gold.

**Width:** 140cm

**Weight:** 437gr/m<sup>2</sup>



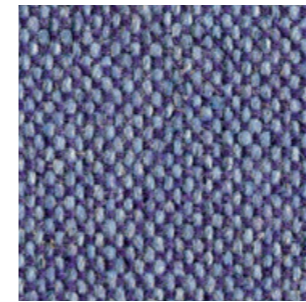
\*\*\*Batch to batch variations may occur within commercial tolerances.



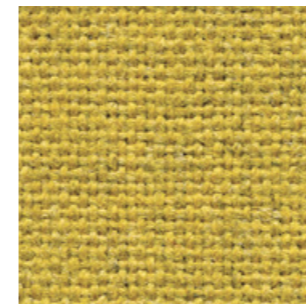
**Note:**

- The real colours and tones of the fabrics may differ from the digital image due to the scan process and the colour calibration of the different screens. Always request real fabric samples before ordering.

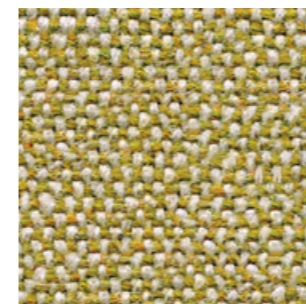
- Consult our Fabric and Leather Matrix to know about the availability of this material by product line.



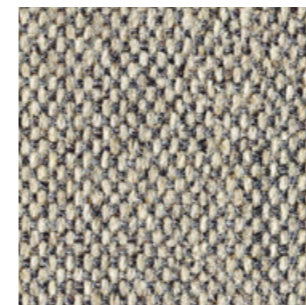
27



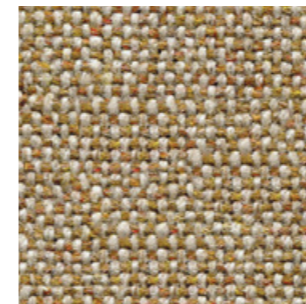
17



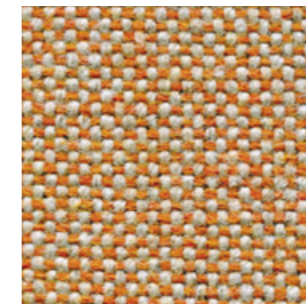
7



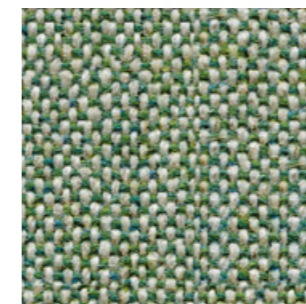
2



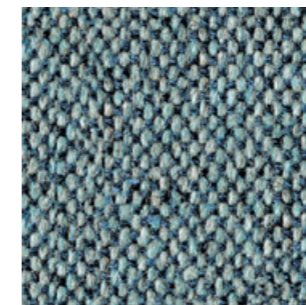
12



8



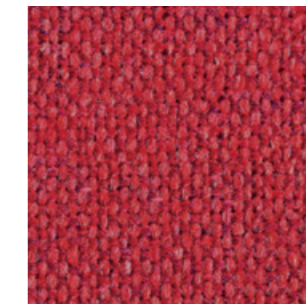
9



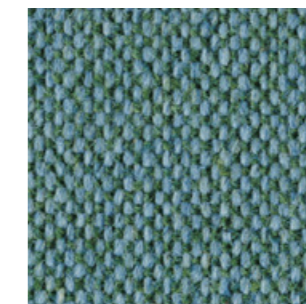
22



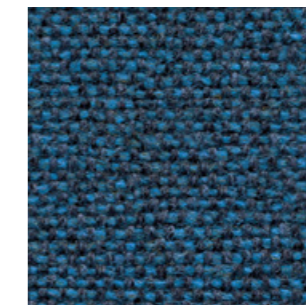
23



1



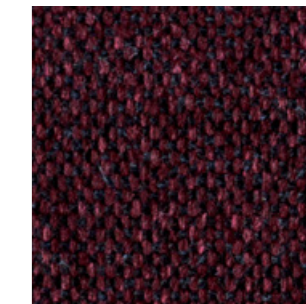
25



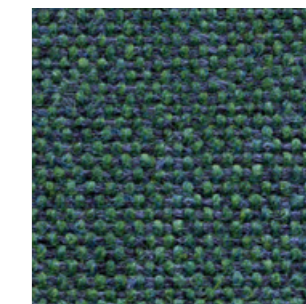
35



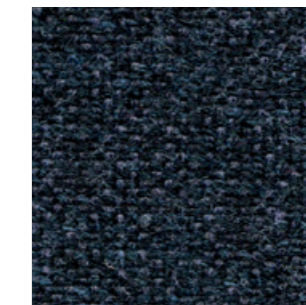
16



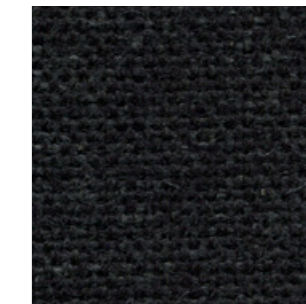
40



32



36



28

# G4 - CONNECT <sup>NEW</sup>

By Gabriel

## TECHNICAL DATA

**Composition:**

48% wool, 41% recycled polyester, 9% polyamide, 2% polyester.

**Light fastness:**

5 - 7, ISO 105 B02.

**Abrasion:**

90,000 Martindale EN ISO 12947-2.

**Resistance to pilling:**

4 - 5, ISO 12945-2.

**Fastness to rubbing:**

Wet 4 - 5.

Dry 4 - 5, ISO 105 X12.

**Flammability:**

EN 1021 - 1 (cigarette).

EN 1021 - 2 (match).

BS 5852 Crib 5.

CA TB 117-2013.

Class Uno UNI 9175 Class 1 | EMME.

**Environment:**

Oeko-Tex® standard 100.

Complies with EU Ecolabel.

**Width:** 140cm

**Weight:** 370gr/m<sup>2</sup>



\*\*\*Batch to batch variations may occur within commercial tolerances.

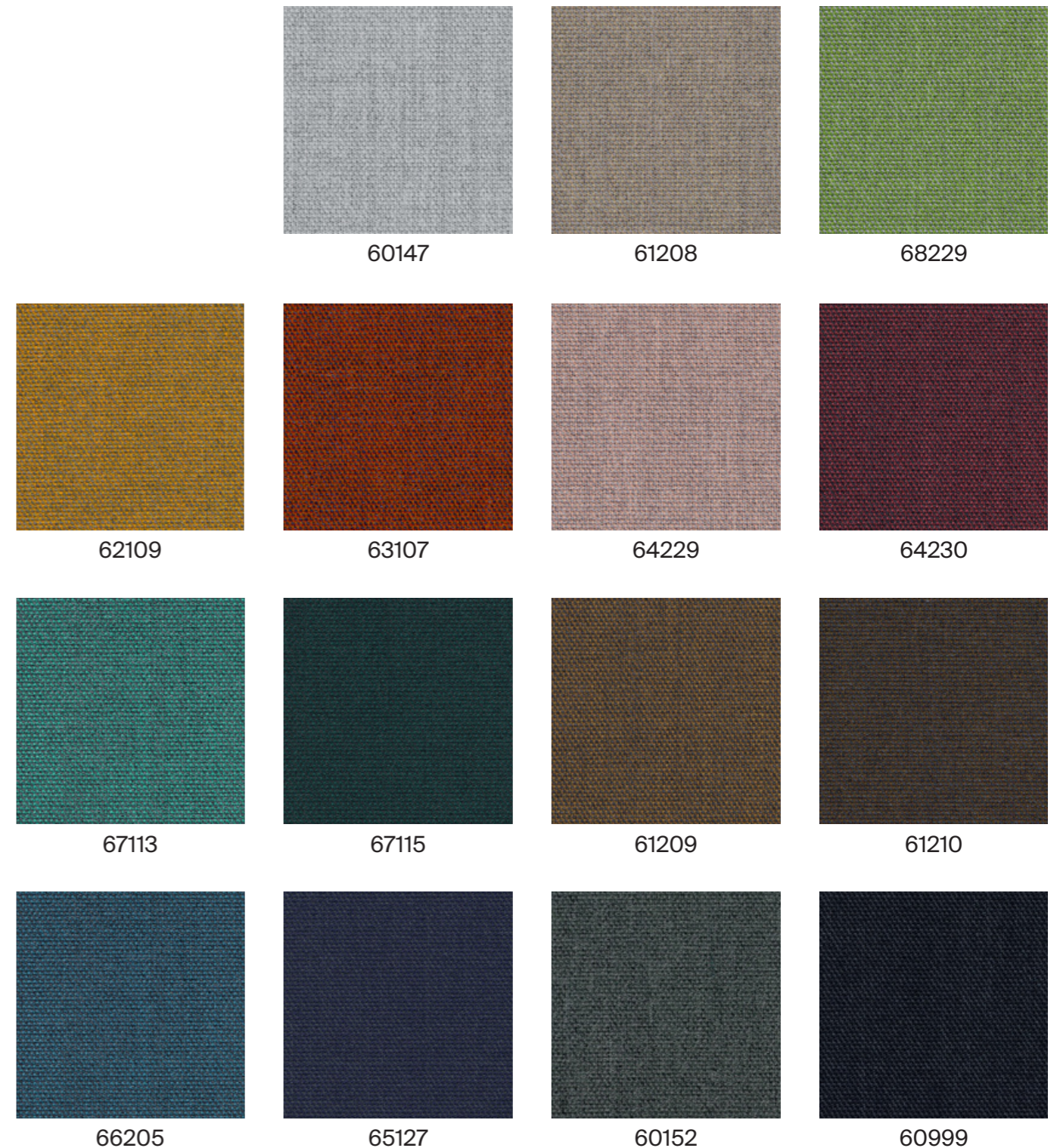


**41%** recycled material  
Post Consumer Recycled Polyester

**Note:**

- The real colours and tones of the fabrics may differ from the digital image due to the scan process and the colour calibration of the different screens. Always request real fabric samples before ordering.

- Consult our Fabric and Leather Matrix to know about the availability of this material by product line.



# G4 - VALENCIA

By Spradling

## TECHNICAL DATA

**Composition:**

Topcoat: 100% Vinyl.  
 Backing: 100% Polyester Hi-Loft<sup>2</sup>™.

**Light fastness:**

1000 hours, XENOTEST DIN 54004/NTC 1479.

**Abrasion:**

300.000 cycles de Martindale EN ISO 12947:1999 Part 2.

**Cold crack resistance:**

-23°C.

**Characteristics:**

Antimicrobial protection.  
 Antibacterial protection.  
 Antimycotic protection.

**Flammability:**

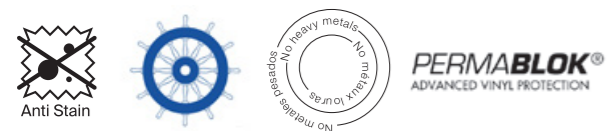
EU: EN 1021 Part 1 y 2.  
 ES: UNE 23.727-90 1R/M.2.  
 FR: NF P 92-503/M2.  
 DE: DIN 4102 B2.  
 IT: UNI 9175 (1987) / UNI 9175/FA1 (1994) Classe 1.IM (UNO I EMME).  
 AT: ÖNORM B 3825, Gruppe 1 - Schwerbrennbares Verhalten.  
 AT: ÖNORM A 3800 Teil 1, Qualmbildungsklasse Q1 - schwachqualmend.  
 IMO FTP 2010 Code MSC.307 (88) Part 8 3.1 & 3.2.  
 US: FMVSS 302.  
 US: FAR 25/853.  
 (MED) Marine Equipment Directive.  
 ECE R118.02 (replaces Directive 95/28/CE) Annexes 6, 7 & 8.  
 EN 71-2:2006+A1:2007 - Toy safety - Parte 2: Inflammability.

**Width:** 140cm

**Weight:** 685gr/m<sup>2</sup>



\*\*\*Batch to batch variations may occur within commercial tolerances.



**Note:**

- The real colours and tones of the fabrics may differ from the digital image due to the scan process and the colour calibration of the different screens. Always request real fabric samples before ordering.
- Consult our Fabric and Leather Matrix to know about the availability of this material by product line.



# G4 - ASPECT

By Camira

## TECHNICAL DATA

**Composition:**

75% trevira, 25% polyester.

**Light fastness:**

5 - 7, EN ISO 105 B02.

**Abrasion:**

≥50.000 Martindale EN ISO 12947.

**Fastness to rubbing:**

Wet 4.

Dry 4, ISO 105 X12.

**Flammability:**

EN 1021 - 1 (cigarette).

EN 1021 - 2 (match).

BS 7176 Low Hazard.

BS 5852 Ignition source 5.

(sobre 50kg/ m3 foam CMHR).

BS 7176 Medium Hazard.

(sobre 50kg/m3 foam CMHR).

DIN 4102 B1.

NF D 60-013 (sobre 50kg/m3 foam CMHR).

ÖNORM B 3825 & A 3800-1 (sobre 58kg/m3 foam CMHR).

UNI 9175 Class 1 IM.

**Environment:**

OEKO-TEX® Standard 100.

Certificate Indoor Advantage™ Gold.

**Width:** 140cm

**Weight:** 470gr/m<sup>2</sup>



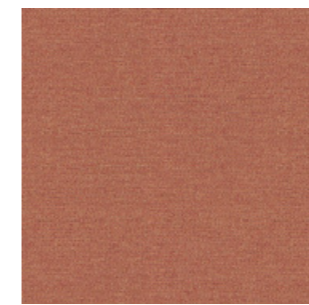
\*\*\*Batch to batch variations may occur within commercial tolerances.



**Note:**

- The real colours and tones of the fabrics may differ from the digital image due to the scan process and the colour calibration of the different screens. Always request real fabric samples before ordering.

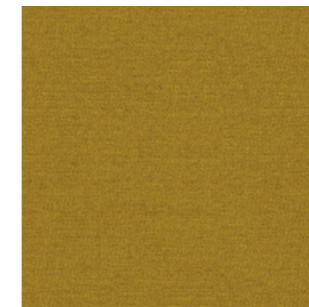
- Consult our Fabric and Leather Matrix to know about the availability of this material by product line.



8



1



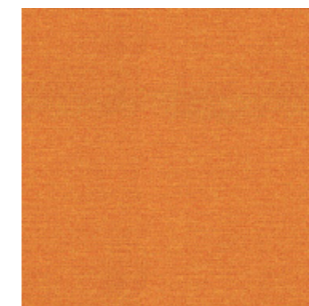
14



17



18



2



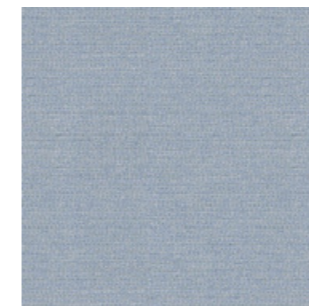
3



6



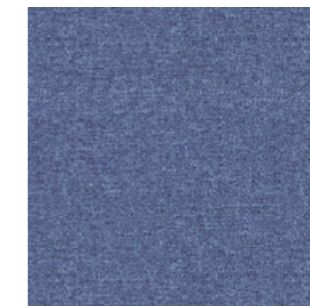
4



25



19



26



24



11



15



29



31

# G4 - STEP

By Gabriel

## TECHNICAL DATA

**Composition:**

100% trevira CS.

**Light fastness:**

5 - 7, ISO 105 B02.

**Abrasion:**

100.000 Martindale EN ISO 12947.

**Resistance to pilling:**

4 - 5, ISO 12945-2.

**Fastness to rubbing:**

Wet 4 - 5. - Dry 4 - 5, ISO 105 X12.

**Flammability:**

IMO MSC 307(88) Annex 1 part 8.

MED.

Certificate IMO.

DIN 4102 B1.

NFP 92-503/504/505 M1.

BS EN 1021 1&2 Cigarette and Match.

BS EN 1021-1 Cigarette.

BS 5852 Part 1 0,1 Cigarette and Match.

BS 5852 Crib 5.

ÖNORM B 3825-B1-3800-Q1 UK.

FAR/JAR 25.853 (a) (i) (ii).

BS 7176 Medium hazard.

AM 18 - NF D 60-013-(only for fabric).

CA TB 117-2013.

Class Uno UNI 9175 Class 1 I EMME.

DIN EN 13501-1 B-s1,d0.

**Environment:**

Oeko-Tex - EU Ecolabel - 100% free of heavy metals.

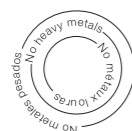
**Width:** 140cm

**Weight:** 470gr/m<sup>2</sup>



60° shrinkage max. 3%

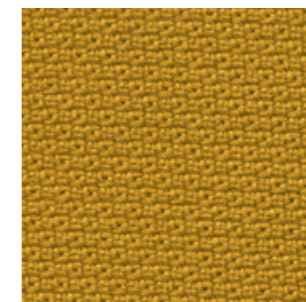
\*\*\*Batch to batch variations may occur within commercial tolerances.



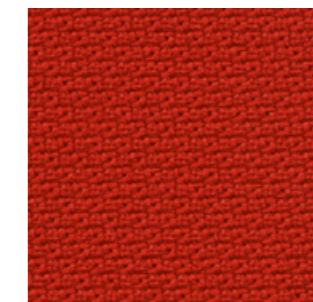
**Note:**

- The real colours and tones of the fabrics may differ from the digital image due to the scan process and the colour calibration of the different screens. Always request real fabric samples before ordering.

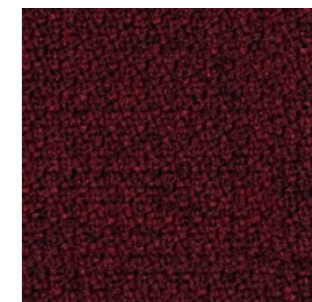
- Consult our Fabric and Leather Matrix to know about the availability of this material by product line.



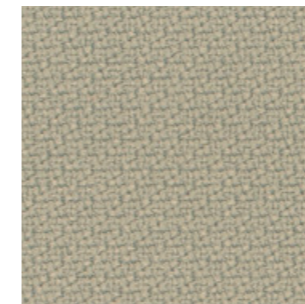
2440 - 62057



2440 - 63012



2442 - 64159



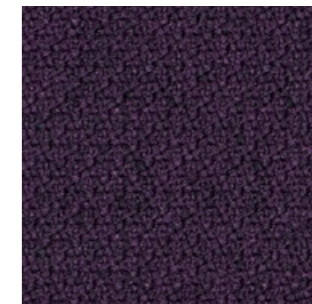
2440 - 61149



2442 - 61103



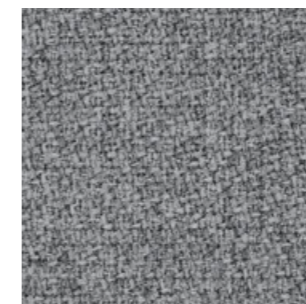
2440 - 61150



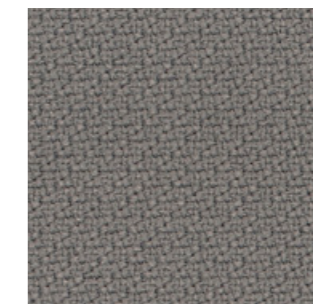
2442 - 65047



2440 - 60004



2441 - 60004



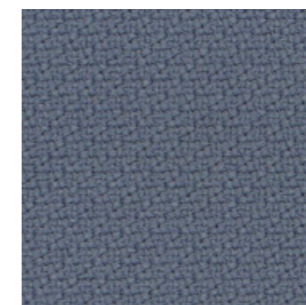
2440 - 60011



2442 - 60011



2441 - 67004



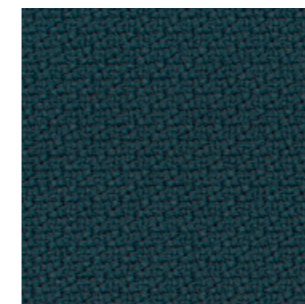
2440 - 66152



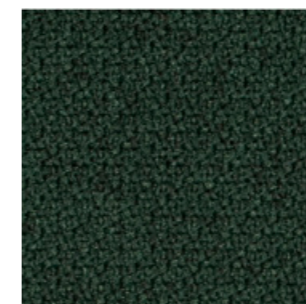
2442 - 66152



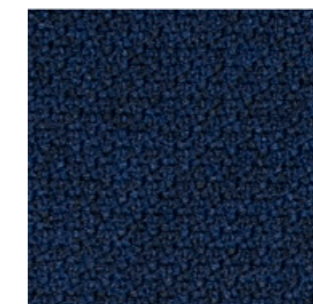
2442 - 66019



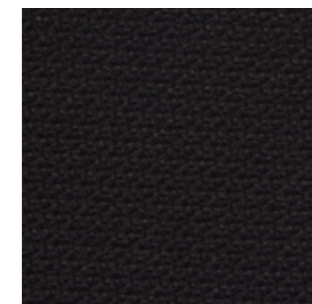
2440 - 68158



2442 - 68121



2442 - 65011



2440 - 60999

# G5 - DOLCE <sup>NEW</sup>

By Spradling

## TECHNICAL DATA

**Composition:**

Topcoat: 100% polyurethane.

Backing: 100% rayon.

**Light fastness:**

40 hours, XENOTEST DIN 54004/NTC 1479.

**Abrasion:**

≥300.000 Martindale EN ISO 12947:1999 Part 2.

**Cold crack resistance:**

-23°C.

**Characteristics:**

Antibacterial protection.

**Flammability:**

EU: EN 1021 Part 1 y 2

US: FMVSS 302

UK: BS 5852 Part 2 CRIB 5

IMO FTP 2010 Code MSC.307 (88) Part 8 3.1 & 3.2.

**Width:** 140cm

**Weight:** 685gr/m<sup>2</sup>



\*\*\*Batch to batch variations may occur within commercial tolerances.

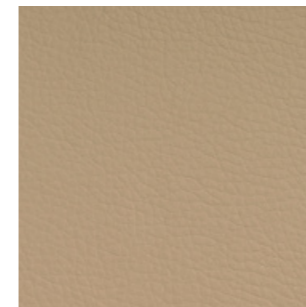
**Note:**

- The real colours and tones of the fabrics may differ from the digital image due to the scan process and the colour calibration of the different screens. Always request real fabric samples before ordering.

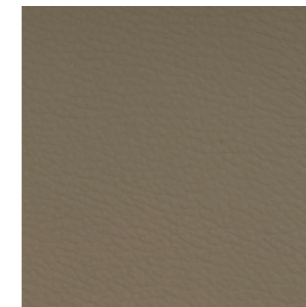
- Consult our Fabric and Leather Matrix to know about the availability of this material by product line.



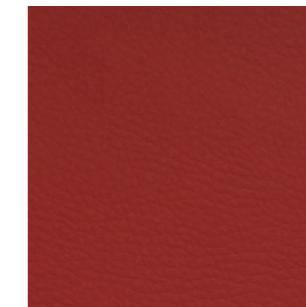
6703



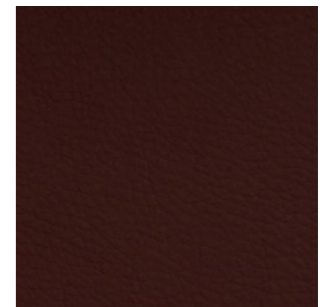
6706



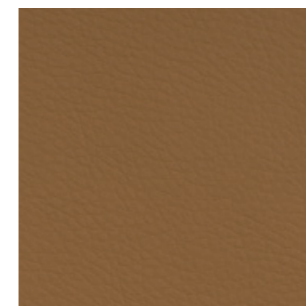
6708



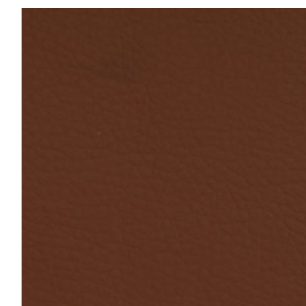
6719



6714



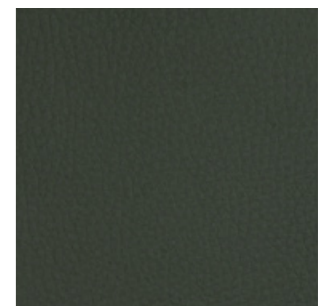
6709



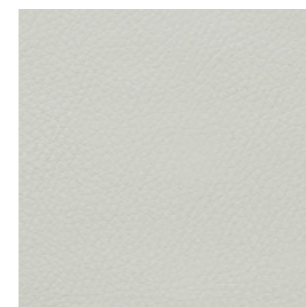
6711



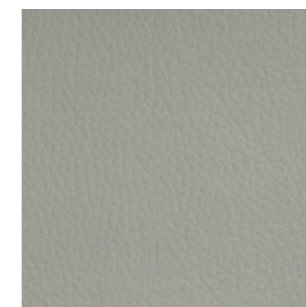
6712



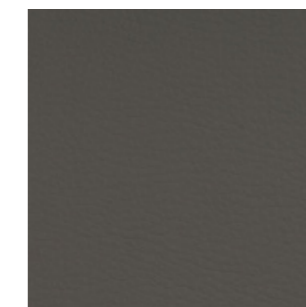
6717



6729



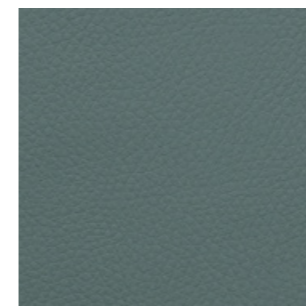
6726



6727



6736



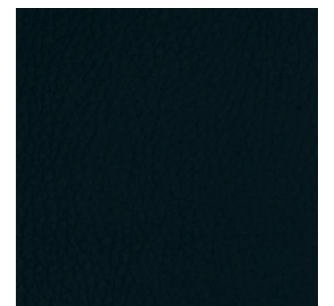
6735



6734



6724



6728

# G5 - SYNERGY <sup>NEW</sup>

By Camira

## TECHNICAL DATA

**Composition:**

95% virgin wool, 5% polyamide.

**Light fastness:**

5, ISO 105-B02.

**Abrasion:**

≥100.000 Martindale EN ISO 12947.

**Fastness to rubbing:**

Wet 4.

Dry 4, ISO 105 X12.

**Flammability:**

EN 1021 - 1 (cigarette).

EN 1021 - 2 (match).

BS 7176 Low Hazard.

NF D 60-013.

ÖNORM B 3825 & A 3800-1 (sobre 58kg/m<sup>3</sup> Foam CMHR).

UNI 9175 Classe 1 IM.

EN 13501-1 Adhered Class D, s1, d0.

EN 13501-1 Un-adhered Class E, s2, d0.

IMO FTP Code (Part 8).

**Environment:**

Complies with EU Ecolabel.

Certificate Indoor Advantage™ Gold.

**Width:** 140cm

**Weight:** 400gr/m<sup>2</sup>



\*\*\*Batch to batch variations may occur within commercial tolerances.



**Note:**

- The real colours and tones of the fabrics may differ from the digital image due to the scan process and the colour calibration of the different screens. Always request real fabric samples before ordering.

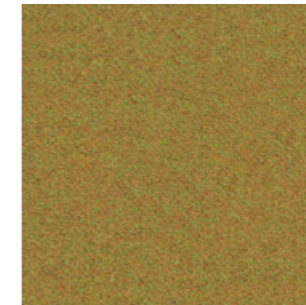
- Consult our Fabric and Leather Matrix to know about the availability of this material by product line.



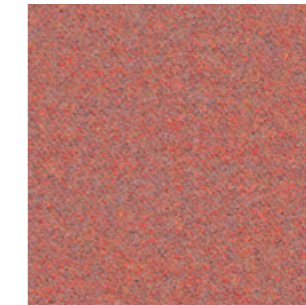
74



45



43



73



84



32



22



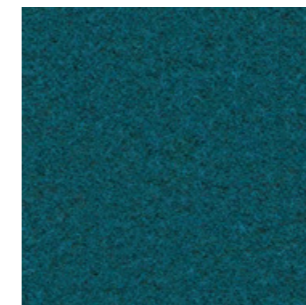
37



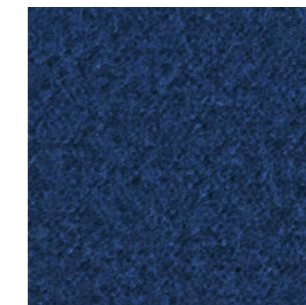
34



49



59



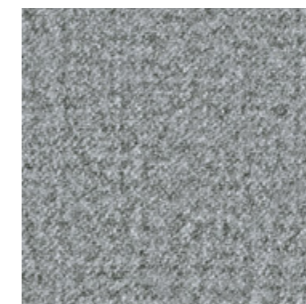
62



41



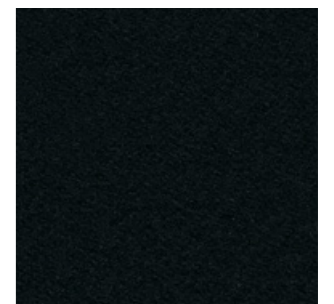
8



16



17



27

# G5 - REMIX

By Kvadrat

## TECHNICAL DATA

### Designer:

Giulio Ridolfo.

### Composition:

90% new wool, 10% nylon.

### Light fastness:

5 - 7, ISO 105-B02.

### Abrasion:

100.000 Martindale EN ISO 12947.

### Resistance to pilling:

4, EN ISO 12945.

### Flammability:

AS/NZS 1530.3.

BS 5852 part 1.

EN 1021-1/2.

IMO FTP Code 2010: Part 8.

NF D 60 013.

NFPA 260.

Önorm B1/Q1.

UNI 9175 11M.

US Cal. Bull. 117-2013.

### Environment:

Complies with EU ecolabel "The Flower".

100% free of heavy metals.

Width: 140cm

Weight: 415gr/m<sup>2</sup>



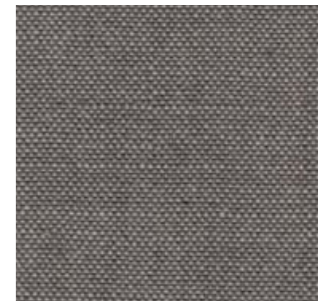
\*\*\*Batch to batch variations may occur within commercial tolerances.



### Note:

- The real colours and tones of the fabrics may differ from the digital image due to the scan process and the colour calibration of the different screens. Always request real fabric samples before ordering.

- Consult our Fabric and Leather Matrix to know about the availability of this material by product line.



136



433



452



346



653



326



933



152



356



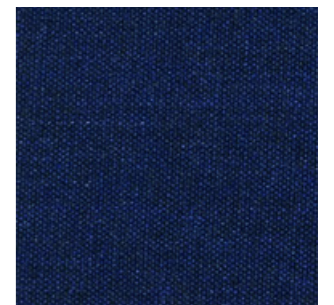
733



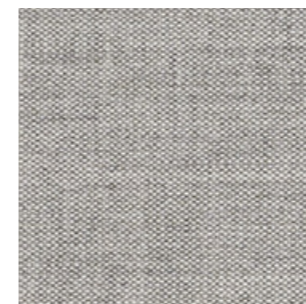
743



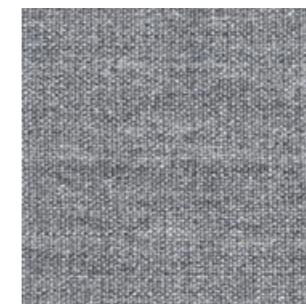
266



773



123



143



163



183



# G5 - CANVAS

By Kvadrat

## TECHNICAL DATA

**Designer:**

Giulio Ridolfo.

**Composition:**

90% new wool, 10% nylon.

**Light fastness:**

5 - 7, ISO 105-B02.

**Abrasion:**

100.000 Martindale EN ISO 12947.

**Resistance to pilling:**

4 - 5, EN ISO 12945.

**Flammability:**

AS/NZS 1530.3.

BS 5852 Crib 5 when flameprotected.

BS 5852, ignition source 3.

BS 5852 part 1.

DIN 4102 B2.

IMO FTP Code 2010: Part 8.

NF D 60 013.

NFPA 260.

Önorm B1/Q1.

UNI 9175 1IM.

US Cal. Bull. 117-2013.

**Environment:**

Complies with EU ecolabel "The Flower".

100% free of heavy metals.

**Width:** 140cm

**Weight:** 480gr/m<sup>2</sup>.



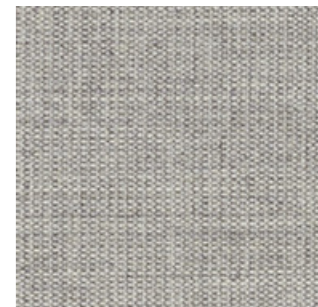
\*\*\*Batch to batch variations may occur within commercial tolerances.



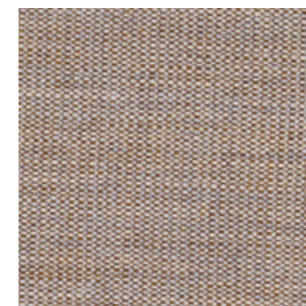
**Note:**

- The real colours and tones of the fabrics may differ from the digital image due to the scan process and the colour calibration of the different screens. Always request real fabric samples before ordering.

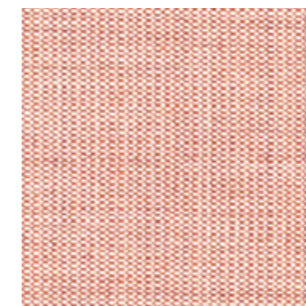
- Consult our Fabric and Leather Matrix to know about the availability of this material by product line.



124



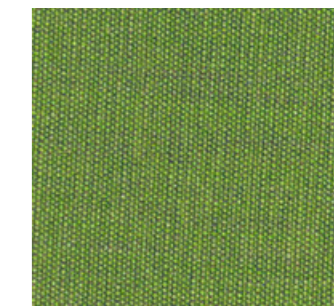
244



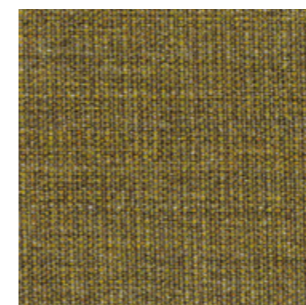
614



654



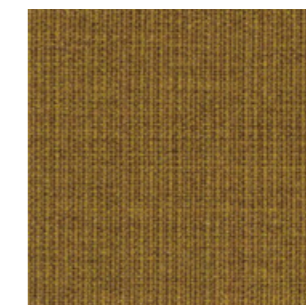
954



964



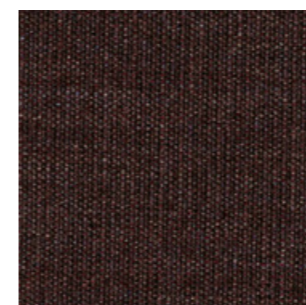
454



424



264



364



684



794



174

# G6 - STEELCUT TRIO

By Kvadrat

## TECHNICAL DATA

### Designer:

Frans Dijkmeijer and Giulio Ridolfo.

### Composition:

90% new wool, 10% nylon.

### Light fastness:

5 - 7 ISO 105-B02.

### Abrasion:

100.000 Martindale EN ISO 12947.

### Resistance to pilling:

4, EN ISO 12945.

### Flammability:

AS/NZS 1530.3

AS/NZS 3837 class 2.

BS 5852 part 1.

DIN 4102 B2.

EN 1021-1/2.

IMO FTP Code 2010: Part 8.

NF D 60 013.

NFPA 260.

Önorm B1/Q1.

UNI 9175 1IM.

US Cal. Bull. 117-2013.

### Environment:

Complies with EU ecolabel "The Flower".

100% free of heavy metals.

Width: 140cm

Weight: 770gr/m<sup>2</sup>



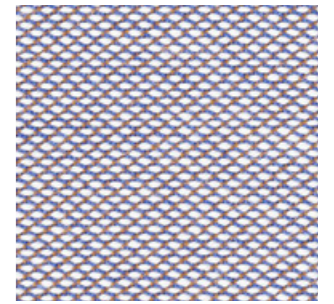
\*\*\*Batch to batch variations may occur within commercial tolerances.



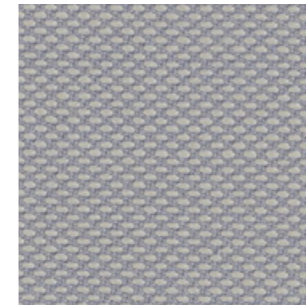
### Note:

- The real colours and tones of the fabrics may differ from the digital image due to the scan process and the colour calibration of the different screens. Always request real fabric samples before ordering.

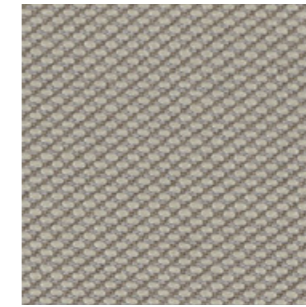
- Consult our Fabric and Leather Matrix to know about the availability of this material by product line.



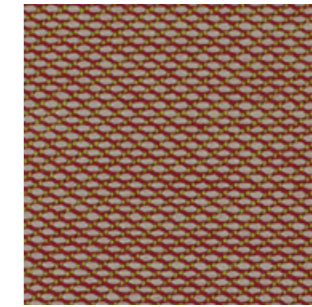
806



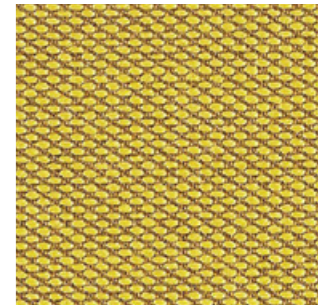
105



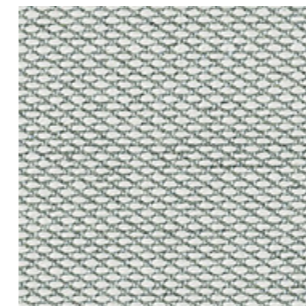
205



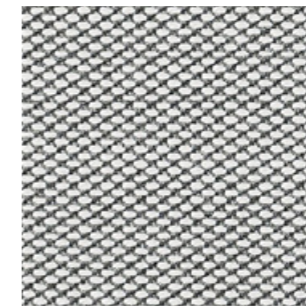
515



453



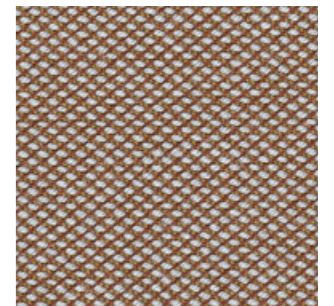
113



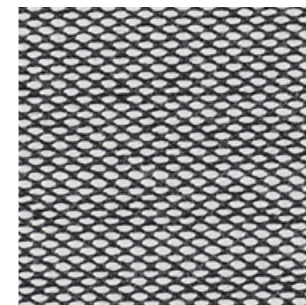
133



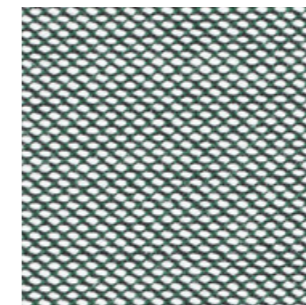
236



476



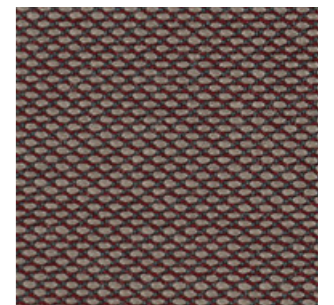
124



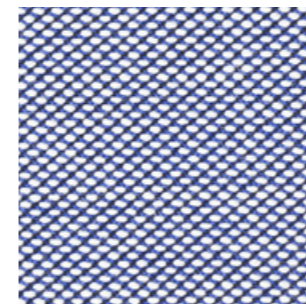
916



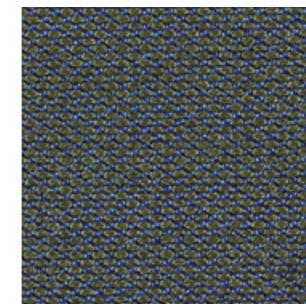
253



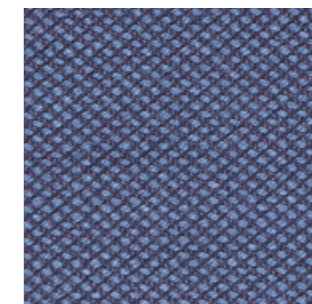
645



716



883



796



383

G6 - STEELCUT TRIO

# G6 - FIORD

By Kvadrat

## TECHNICAL DATA

### Designer:

Louise Sigvardt & Tone Barnung.

### Composition:

92% new wool, 8% nylon.

### Light fastness:

5 - 7, ISO 105-B02.

### Abrasion:

60.000 Martindale EN ISO 12947.

### Resistance to pilling:

4 - 5, EN ISO 12945.

### Flammability:

AS/NZS 3837 class 2.

ASTM E84 Class A Adhered.

ASTM E84 Class A Unadhered.

BS 5852 part 1.

EN 1021-1/2.

IMO FTP Code 2010:Part 8.

NF D 60 013.

NFPA 260

ÖNORM B1/Q1

UNI 9175 1IM.

US Cal. Bull. 117-2013.

### Environment:

Complies with EU ecolabel "The Flower"

100% free of heavy metals.

Width: 140cm

Weight: 500gr/m<sup>2</sup>



\*\*\*Batch to batch variations may occur within commercial tolerances.



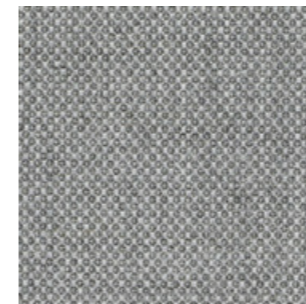
### Note:

- The real colours and tones of the fabrics may differ from the digital image due to the scan process and the colour calibration of the different screens. Always request real fabric samples before ordering.

- Consult our Fabric and Leather Matrix to know about the availability of this material by product line.



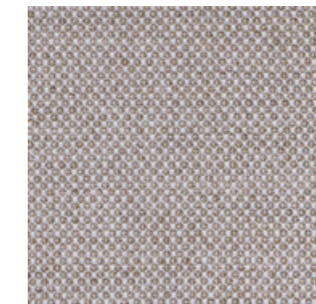
271



151



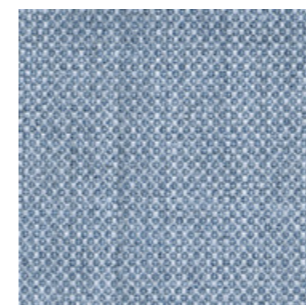
121



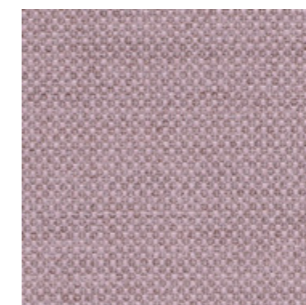
251



451



751



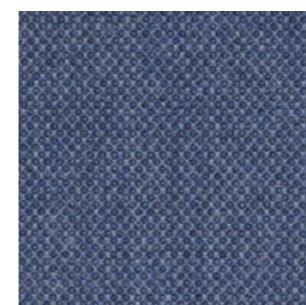
551



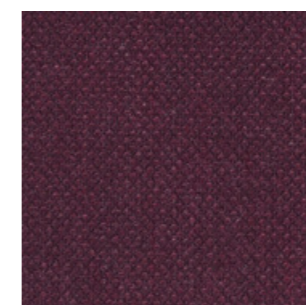
951



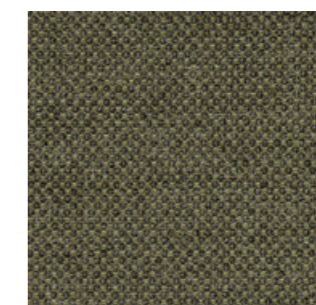
371



771



591



961



191

# G7 - HALLINGDAL

By Kvadrat

## TECHNICAL DATA

### Designer:

Nanna Ditzel.

### Composition:

70% new wool, 30% viscose.

### Light fastness:

5 - 7 ISO 105-B02.

### Abrasion:

100.000 Martindale EN ISO 12947.

### Resistance to pilling:

3, EN ISO 12945.

### Flammability:

AS/NZS 1530.3.

AS/NZS 3837.

BS 5852 Crib 5.

BS5852 part 1.

DIN 4102 B2.

EN 1021-1/2.

IMO FTP Code 2010: Part 8.

NF D 60 013.

NFPA 260.

Önorm B1/Q1.

UNI 9175 1IM.

US Cal. Bull. 117 - 2013.

### Environment:

Complies with EU ecolabel "The Flower".

Width: 140cm

Weight: 795gr/m<sup>2</sup>



\*\*\*Batch to batch variations may occur within commercial tolerances.



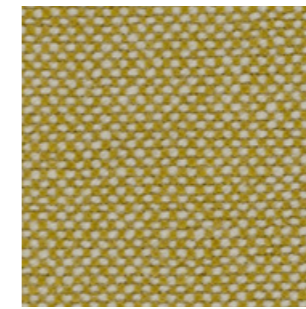
### Note:

- The real colours and tones of the fabrics may differ from the digital image due to the scan process and the colour calibration of the different screens. Always request real fabric samples before ordering.

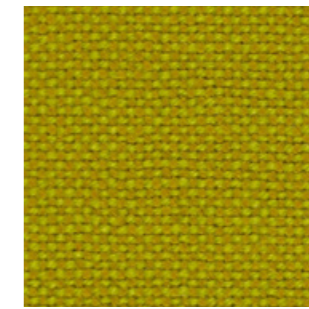
- Consult our Fabric and Leather Matrix to know about the availability of this material by product line.



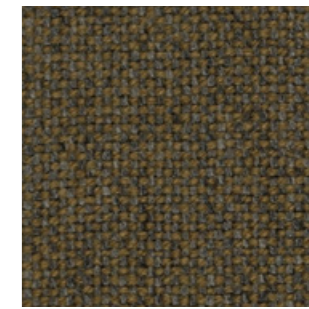
200



407



420

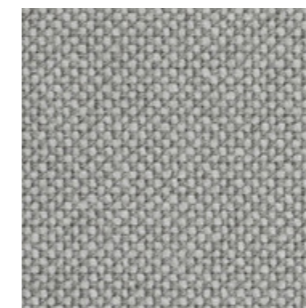


687

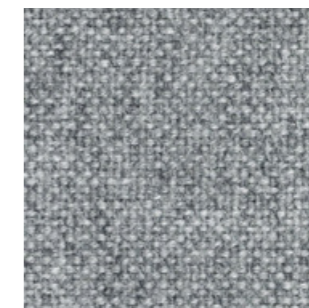
227



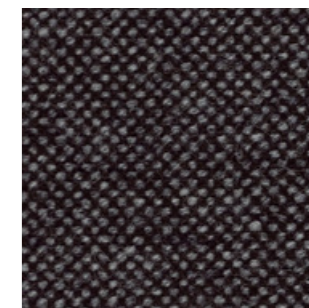
100



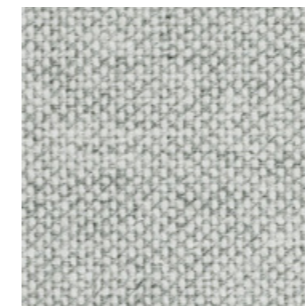
123



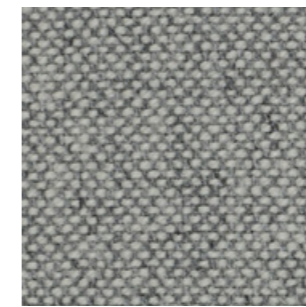
130



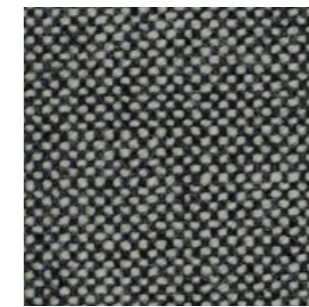
368



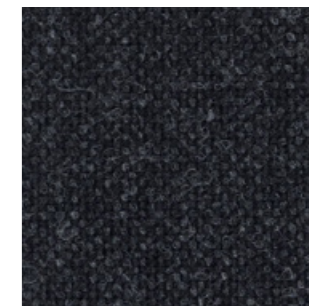
110



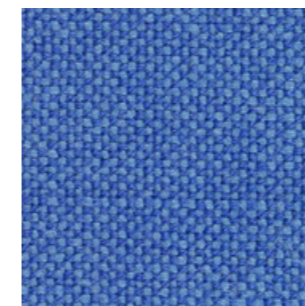
116



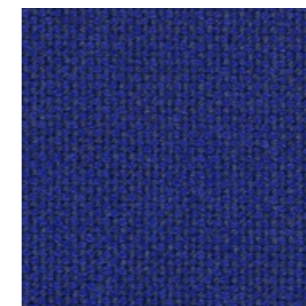
126



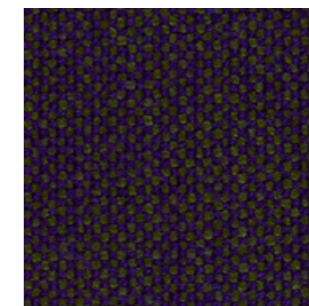
180



733



773



968



376

# G10 - LEATHER

## TECHNICAL DATA

### Composition:

Cow leather.

### Light fastness:

≥4/5, UNI EN ISO 105B02.

### Fastness to rubbing:

Wet ≥4 (150 cycles).

Dry ≥4 (500 cycles).

Perspiration ≥4 (80 cycles), UNI EN ISO 11640: 1998 - 11641 (pH8).

### Tear strength:

>20N, EN ISO 3377-1.

### Determination of PH:

>3,5, EN ISO 4045.

### Adhesion of the finish:

≥2, UNI EN ISO 11644.

### Determination of dry ex resistance:

Without damage, UNI EN ISO 5402.

### Flammability:

Ignition source 0 (cigarette).

Ignition source 1 (match).

BS 5852-1979.

BS EN 1021-1-2:2006.

### Thickness:

0,9 - 1,1mm

### Average surface:

4,8 - 5,0m<sup>2</sup>

### Maintenance:

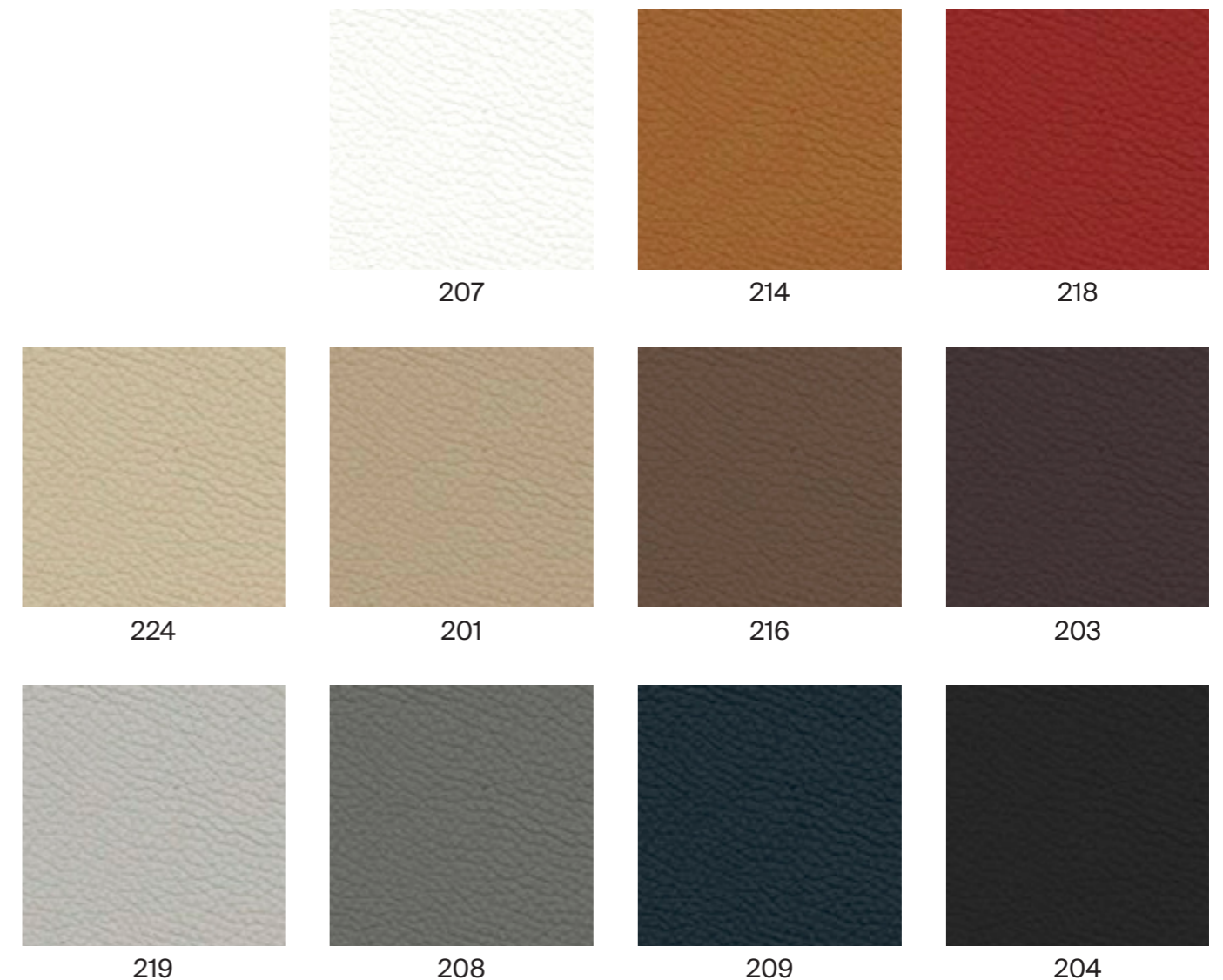
Wash with neutral soap and water or with a cleaning product for leather.

\*\*\*Batch to batch variations may occur within commercial tolerances.

### Note:

- The real colours and tones of the fabrics may differ from the digital image due to the scan process and the colour calibration of the different screens. Always request a real leather sample before ordering.

- Consult our Fabric and Leather Matrix to know about the availability of this material by product line.



# G11 - LEATHER

## TECHNICAL DATA

**Composition:**

Cow leather.

**Light fastness:**

≥5, UNI EN ISO 105B02.

**Fastness to rubbing:**

Wet ≥4 (80 cycles).

Dry ≥4 (500 cycles).

Perspiration ≥4 (50 cycles), UNI EN ISO 11640 - 11641.

**Tear strength:**

≥20N, EN ISO 3377-1.

**Determination of PH:**

≥3,5 ≤0,7 EN ISO 4045.

**Adhesion of the finish:**

≥2,5N / 10mm, UNI EN ISO 11644.

**Determination of dry flex resistance:**

>50.000 cycles, UNI EN ISO 5402-1.

**Flammability:**

Ignition source 0 (cigarette)

Ignition source 1 (match), BS 5852-1:79.

**Thickness:**

0,9 - 1,1mm

**Average surface:**

4,8 - 5,0m<sup>2</sup>

**Maintenance:**

Wash with neutral soap and water or with a cleaning product for leather.

\*\*\*Batch to batch variations may occur within commercial tolerances.

Note:

- The real colours and tones of the fabrics may differ from the digital image due to the scan process and the colour calibration of the different screens. Always request a real leather sample before ordering.

- Consult our Fabric and Leather Matrix to know about the availability of this material by product line.



# MESH

## TECHNICAL DATA

### Composition:

55% PL - 45% PA

### Light fastness:

(Blue scale) - Xenotest

UNI EN ISO 105-B02.

Tolerance de 5 a 8 - Declared a 6.

### Abrasion resistance (rubs):

Martindale - UNI EN ISO 12947-2.

> 100.000 - Tolerance +-10% .

### Flammability:

UNE EN 1021/1.

\*Flammability performance is dependent on foam and glue used.

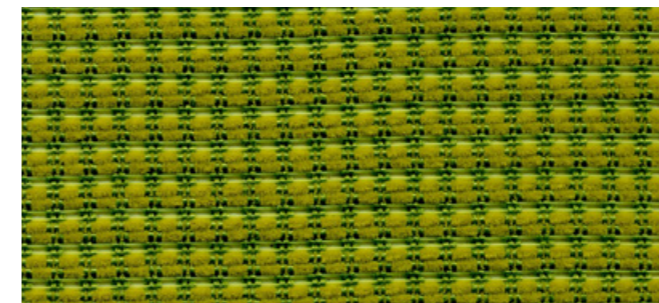


\*\*\*Batch to batch variations may occur within commercial tolerances.

### Note:

- The real colours and tones of the fabrics may differ from the digital image due to the scan process and the colour calibration of the different screens. Always request a real mesh sample before ordering.

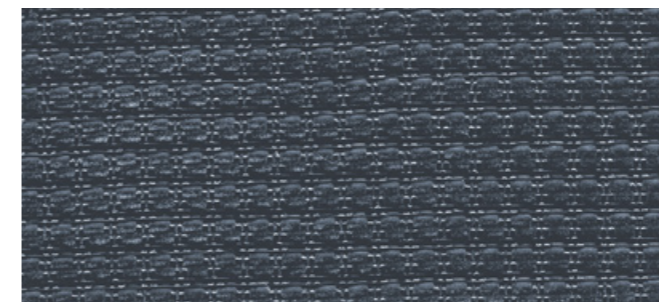
- Consult our Fabric and Leather Matrix to know about the availability of this material by product line.



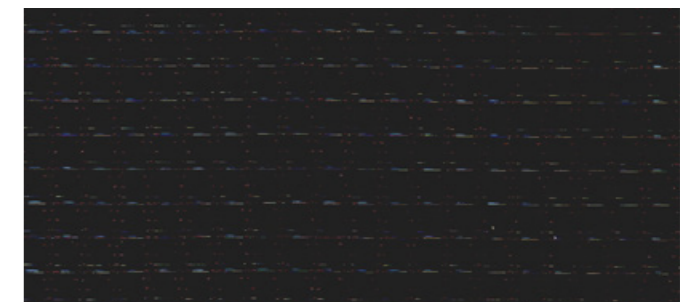
Green



White



Grey



Black

# METAL PAINT & FINISHES

INCLASS powder coats all painted metal components for a durable finish eliminating VOC's (volatile organic compounds) from being released into the environment. The result is a finish that is abrasion and impact resistant.

We offer a wide palette of metal finishes that are priced by grades. M1 colours, M2 colours and chrome.



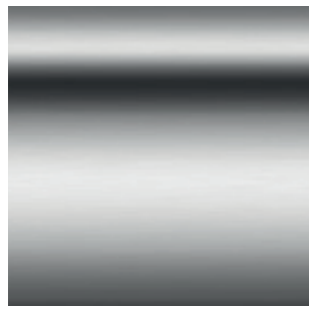




# METAL

## SAMPLE CARD

### CHROME



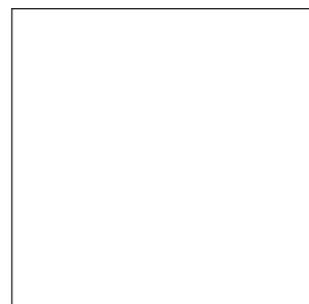
### M1 COLOURS



B00



Aluminum



W01

### M2 COLOURS



M56



B40



B36



G49



M38



V74



B44



G42



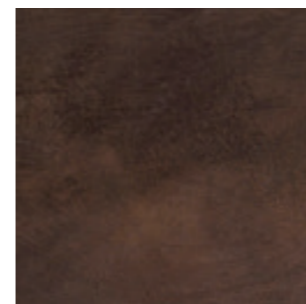
Y62



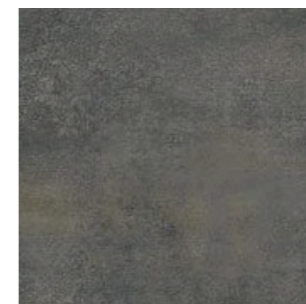
M82



P70



Rust Brown



Rust Grey

# WOOD

## VENEER / PAINTED WOOD

### VENEER / SOLID WOOD

Due to natural variations of the wood, finished products may vary from samples in colour, texture, and grain.

Wood parts may contain knots or grain patterns of different tones and are not homogeneous. This may lead to variations from one piece to another.

The wooden parts will darken and change tone with age and exposure to light.

All veneer and solid wood parts are finished with post-catalysed wood coatings, which provide exceptional durability and resistance.

### PAINTED WOOD

All painted wood parts are finished with post-catalysed wood coatings with a process of three layers. This process provides exceptional durability and resistance.

### BESPOKE WOOD FINISHES

Upon approval and with an upcharge, bespoke wood finishes are available. Contact our Customer Service for pricing and lead times.

Prior to approval, customer will send a sample for matching at least 6x6cm in surface dimension. Once received in our factory and approved, INCLASS will produce a matching sample following acknowledgement of the order. INCLASS will schedule the order for production only when the sample has been approved by the Customer.

Pantone® or RAL colour matches do not require approval and sample matching, but it may be requested by the Customers at a cost to be agreed with our Customer Service.

INCLASS may ask for payments in advance on bespoke finishes.



# WOOD MATRIX BY COLLECTION

LEGEND

- Not available
- Available
- See specifications

	AARHUS	AIR	ALTEA	ANN	ARC	ARUM	ARYN	ARYN MAX	ARYN WOOD	BINAR 60	BINAR EXECUTIVE	DIVIDERS / SCREENS	DUNAS LOUNGE	DUNAS XL	DUNAS XS	ENTROPY	ESCALAS	ESSENS	ETNIA	FLAT	ITEK	ITEK 200	LAN	LAPSE	LEX	LUND	MALIBU	MARCUS	MILLENIUM	MOON	NIM	NUME	PAU	PLANIA BENCH	PLANIA TABLE	STELLA	STIKS	SUI	SUN	TAIA	TAO	TEN	TETRIS	UNNIA	UNNIA TAPIZ	VARYA	VARYA TAPIZ	VARYA WOOD	ZERO		
<b>WOOD FINISHES</b>																																																			
Beech	-	-	-	•	•	-	-	-	-	-	-	-	-	-	-	-	-	-	-	-	-	-	-	-	-	-	-	-	-	-	•	-	-	-	-	-	-	-	-	-	-	-	-	-	-	-	-	-	-	-	
Oak	•	-	•	•	•	-	-	-	•	•	-	-	-	•	•	-	•	-	-	-	-	-	-	-	•	-	-	-	-	-	-	-	-	•	-	-	-	-	-	-	•	•	•	-	•	•	•	•	•	•	
Walnut	-	-	-	•	•	-	-	-	•	-	-	-	-	-	-	-	•	-	-	-	-	-	-	-	-	-	-	-	-	-	-	-	-	-	-	-	-	-	-	-	-	-	-	-	-	-	-	-	◦	-	-
W1 Colours	-	-	-	•	•	-	-	-	-	-	-	-	-	-	-	-	-	-	-	-	-	-	-	-	-	-	-	-	-	-	-	-	-	-	-	-	•	-	-	•	-	-	-	-	-	-	-	-	-	-	
W2 Colours	-	-	-	•	•	-	-	-	-	-	-	-	-	-	-	-	-	-	-	-	-	-	-	-	-	-	-	-	-	-	-	-	-	-	-	-	•	-	-	•	-	-	-	-	-	-	-	-	-	-	-

INCLASS

# WOOD

VENEER / SOLID WOOD

734/735

## BEECH



Natural Stain



Walnut Stain

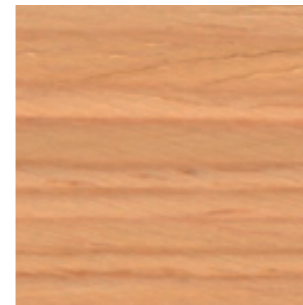


Wenge Stain

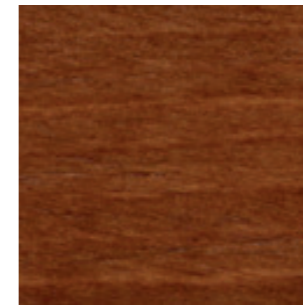


Black Stain

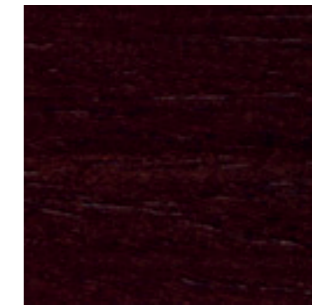
## OAK



Natural Stain



Walnut Stain

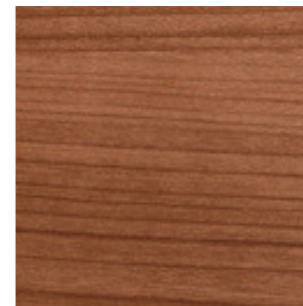


Wenge Stain



Black Stain

## WALNUT



Natural Stain

INCLASS

# WOOD

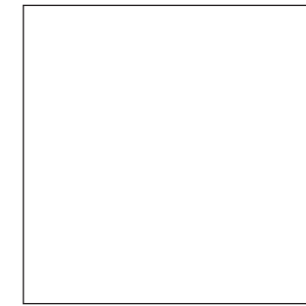
LACQUERED COLOURS

736/737

## W1 COLOURS



B00



W01

## W2 COLOURS



M56



B40



B36



G49



M38



V74



B44



G42



Y62



M82



P70

# POLYPROPYLENE

PP1 COLOURS



# POLYPROPYLENE MATRIX BY COLLECTION

LEGEND

- Not available
- Available
- See specifications

	AARHUS	AIR	ALTEA	ANN	ARC	ARUM	ARYN	ARYN MAX	ARYN WOOD	BINAR 60	BINAR EXECUTIVE	DIVIDERS / SCREENS	DUNAS LOUNGE	DUNAS XL	DUNAS XS	ENTROPY	ESCALAS	ESSENS	ETNIA	FLAT	ITEK	ITEK 200	LAN	LAPSE	LEX	LUND	MALIBU	MARCUS	MILLENIUM	MOON	NIM	NUME	PAU	PLANIA BENCH	PLANIA TABLE	STELLA	STIKS	SUI	SUN	TAIA	TAO	TEN	TETRIS	UNNIA	UNNIA TAPIZ	VARYA	VARYA TAPIZ	VARYA WOOD	ZERO	
<b>POLYETHYLENE FINISHES</b>	-	-	-	-	-	●	●	●	-	-	-	-	-	-	-	-	-	-	-	-	-	-	-	-	-	-	-	-	-	-	-	-	-	-	-	-	-	-	-	-	-	-	-	-	-	-	-	-	-	
PP1 Colours	-	-	-	-	-	●	●	●	-	-	-	-	-	-	-	-	-	-	-	-	-	-	-	-	-	-	-	-	-	-	-	-	-	-	-	-	-	-	-	-	-	-	-	-	-	-	-	-	-	-



# POLYPROPYLENE

## PP1 COLOURS



B00



M56



B40



B36



B44



M38



\*\*\*

V16



V74



G42



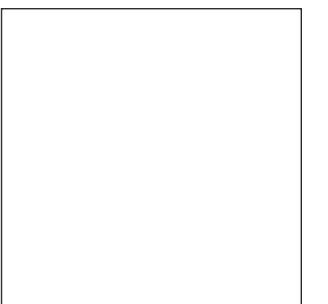
Y62



M82



P70



W01

\*\*\* Color **V16** is not available in  
In Metal Ral colors  
On MDF colored Surfaces  
Or Table base for Essens table

# ROTOMOLDED POLYETHYLENE

Rotomolded polyethylene items are suitable for indoor and outdoor use.

Composed polyethylene colours may present surface irregularities that are intrinsic to these type of finishes. INCLASS will not accept returns due to this

Painted polyethylene colours are available in matt or gloss finish.  
Customer must specify.

Upon approval, the bases can also be painted with any of the RAL colours in matt or gloss finish. Contact Customer Service for lead time.

Upon approval other bespoke colours are also available. Contact our Customer Service for pricing and lead time.



INCLASS

# ROTOMOLDED POLYETHYLENE

POLYETHYLENE COLOURS

746/747

## PE1 STANDARD COLOURS



G49 Anthracite



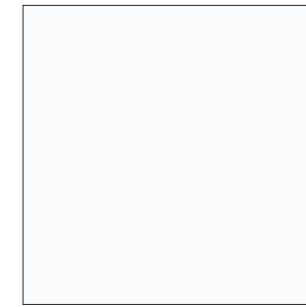
G42 Grey



M82 Stone

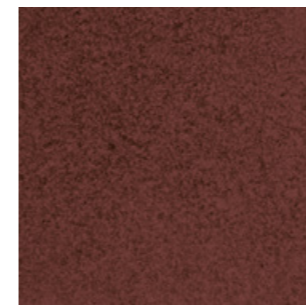


B00 Black

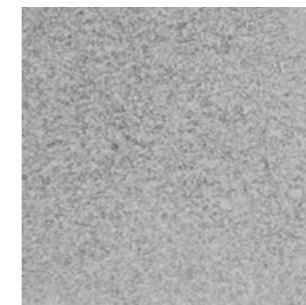


W01 White

## PE2 COMPOSED COLOURS



Rust Brown



Concrete

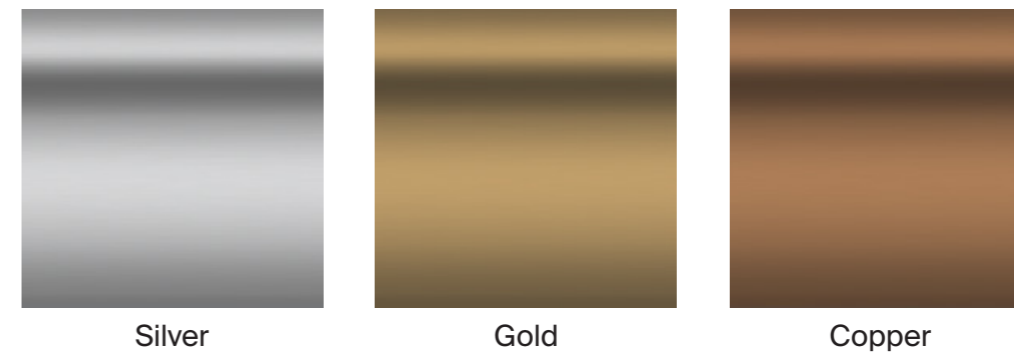
# ROTOMOLDED POLYETHYLENE

## LACQUERED POLYETHYLENE COLOURS

### PE3 STANDARD PAINTED COLOURS



### PE4 METALLIC PAINTED COLOURS



### PE5 BESPOKE PAINTED COLOURS

OPTIONALLY they can be finished in all the colours of the RAL sample card, both in gloss and matt.

\*Standard in matt finish. Optionally available in gloss finish.

# TABLE TOPS



# TABLE TOPS MATRIX BY COLLECTIONS

LEGEND

- Not available
- Available
- o See specifications

	AARHUS	AIR	ALTEA	ANN	ARC	ARUM	ARYN	ARYN MAX	ARYN WOOD	BINAR 60	BINAR EXECUTIVE	DIVIDERS / SCREENS	DUNAS LOUNGE	DUNAS XL	DUNAS XS	ENTROPY	ESCALAS	ESSENS	ETNIA	FLAT	ITEK	ITEK 200	LAN	LAPSE	LEX	LUND	MALIBU	MARCUS	MILLENIUM	MOON	NIM	NUME	PAU	PLANIA BENCH	PLANIA TABLE	STELLA	STIKS	SUI	SUN	TAIA	TAO	TEN	TETRIS	UNNIA	UNNIA TAPIZ	VARYA	VARYA TAPIZ	VARYA WOOD	ZERO				
TABLE TOPS FINISHES																																																					
Beech	-	-	-	•	-	-	-	-	-	-	-	-	-	-	-	-	-	-	-	-	-	-	-	-	-	-	-	-	-	-	•	-	-	•	-	-	-	-	-	-	-	-	-	-	-	-	-	-					
Oak	-	-	-	•	•	-	-	-	-	-	-	-	•	•	-	-	•	•	•	•	•	-	-	•	•	•	-	•	-	-	•	•	-	•	•	•	•	•	-	-	-	-	-	-	•	-	-	-	-	-			
Walnut	-	-	-	-	•	-	-	-	-	-	-	-	-	-	-	•	•	•	-	-	-	-	-	-	-	-	-	-	-	-	-	-	-	-	-	•	•	-	-	•	-	-	-	-	-	-	-	-	-	-	-		
W1 colours	-	-	-	•	•	-	-	-	-	-	-	-	•	•	-	-	•	•	•	•	•	-	-	•	•	•	-	•	-	-	•	•	•	•	•	•	•	•	•	-	-	-	-	-	-	•	•	•	•	•	•	-	
W2 colours	-	-	-	•	•	-	-	-	-	-	-	-	•	•	-	-	•	•	•	•	•	-	-	•	•	•	-	•	-	-	•	•	•	•	•	•	•	•	•	•	-	-	-	-	-	-	•	•	•	•	•	•	-

INCLASS

# TABLE TOPS

WOOD VENEER

MDF core with natural wood surface.

754/755

## BEECH



Natural Stain



Walnut Stain

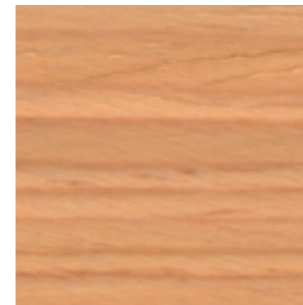


Wenge Stain

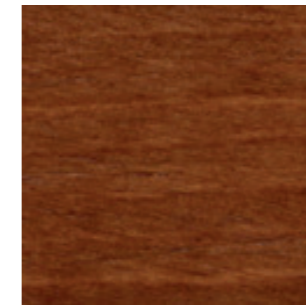


Black Stain

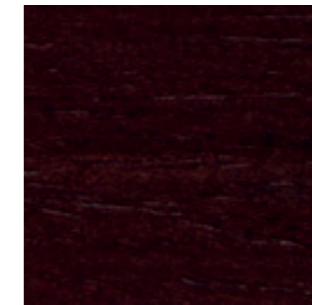
## OAK



Natural Stain



Walnut Stain

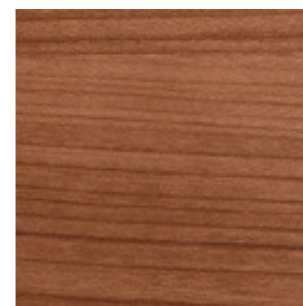


Wenge Stain



Black Stain

## WALNUT



Natural Stain

INCLASS

# TABLE TOPS

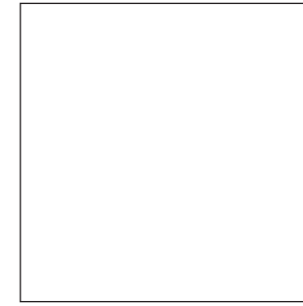
LACQUERED MDF

756/757

## W1 COLOURS



B00



W01

## W2 COLOURS



M56



B40



B36



G49



M38



V74



B44



G42



Y62



M82



P70



# TABLE TOPS

## MISCELLANEOUS MATERIALS

SOLID FENIX®  
12mm



Black

MELAMINE

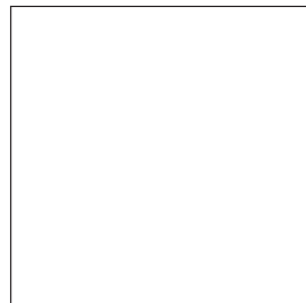


White

SOLID HPL  
12mm black core

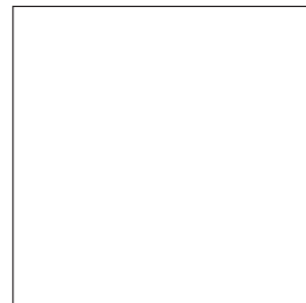


Black



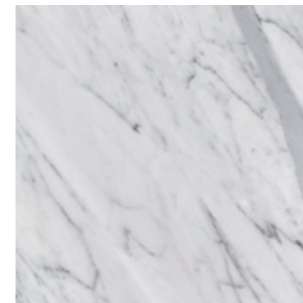
White

SOLID HPL  
12mm white core

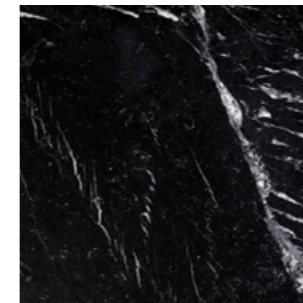


White

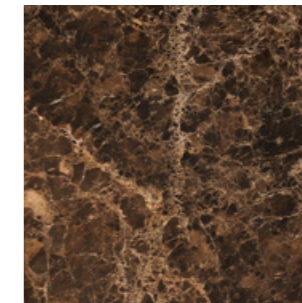
NATURAL MARBLES



White carrara



Black marquina



Brown emperor

3.

# CARE AND MAINTENANCE

# CARE AND MAINTENANCE

## GLIDES

With continued use, the glides of the structures wear out. We recommend periodically checking its status. If they are worn, they must be replaced to avoid damage to the floor. INCLASS products fit standard plastic glides suitable for a wide variety of floor types. As an option, we offer the possibility of equipping your furniture with special glides for specific types of floors. If you have any questions, please ask our Customer Service department to find out the right type of glide suitable for your floor.

## UPHOLSTERY FABRICS

INCLASS offers a broad range of upholstery materials produced by renowned manufacturers.

Please consult the technical data, maintenance and cleaning recommendations indicated by the manufacturers of each fabric in our finishes book.

\* Important notice: INCLASS accepts no liability for users' stains or transfer of garment dyes to the furniture's fabric. This may occur especially with white or light coloured fabrics.

## NATURAL LEATHER

We recommend cleaning with a soft sponge or cloth dampened with warm water and neutral soap. Do not soak it excessively. Dry thoroughly with a cloth once you have finished cleaning. INCLASS can supply specific products for cleaning the natural leather.

## FAUX LEATHER

We recommend cleaning with a non-abrasive cloth or soft sponge dampened with warm water and neutral soap. Dry thoroughly with a cloth once you have finished cleaning. Avoid harsh detergents as they may cause hydrolysis and surface deterioration.

## WOOD SURFACES

In the case of stains, we recommend cleaning the surface with a non-abrasive cloth, warm water and neutral soap. Once finished cleaning, we recommend that you dry the surface thoroughly.

Alternatively, you may use specific cleaning products for wood surfaces.

## METALLIC STRUCTURES

In no case may abrasive sponges, fabrics or objects be used. Cleaning may be performed in the following ways:

Clean the surface with a non abrasive damp cloth and neutral soap. The surface should be dried after cleaning.

Clean the surface with a non abrasive cloth and a solution of 50% water and 50% alcohol.

Clean the surface with a non abrasive cloth and a specific cleaning product for metallic surfaces.

Limescale marks on Chrome may be removed by using a 30% vinegar and water solution or with specific cleaning products for chromed surfaces. Dry thoroughly with a dry non abrasive cloth when you have finished cleaning.

Strong, acidic or alkaline cleaners can damage painted metallic surfaces. It is very important to prevent this.

## CASTERS

With the use, dust and debris may accumulate on your chair casters leading to premature loss of mobility and performance. A regular cleaning and maintenance are needed to prolong the right function of your chair casters.

## PLASTICS

Plastic surfaces can be cleaned with a non-abrasive cloth, warm water and neutral soap. Alternatively, you may use a solution of 50% water and 50% alcohol or specific cleaning products for plastic surfaces.

## MARBLE

Marble is a porous natural material, so it can be prone to staining and etching. With marble prevention and maintenance is very important.

For routine maintenance and cleaning you can wipe with a non-abrasive cloth, warm water and soap. Keep acids like lemon juice, vinegar or wine away from the surface. If they do spill, remove them as quickly as possible. Some stains, can be removed with a solution of 12% hydrogen peroxide and a few drops of ammonia.

For more information on the maintenance of these and other materials, please contact our Customer Service.

## DISINFECTION

Due to the COVID 19 pandemic, many people wonder how to properly clean their furniture to prevent and avoid the transmission of the virus without damaging its surface materials. In order to inform you, INCLASS has published a disinfection guide with useful tips to disinfect the different surfaces of your furniture. You can consult our disinfection guide in the following [Link](#).